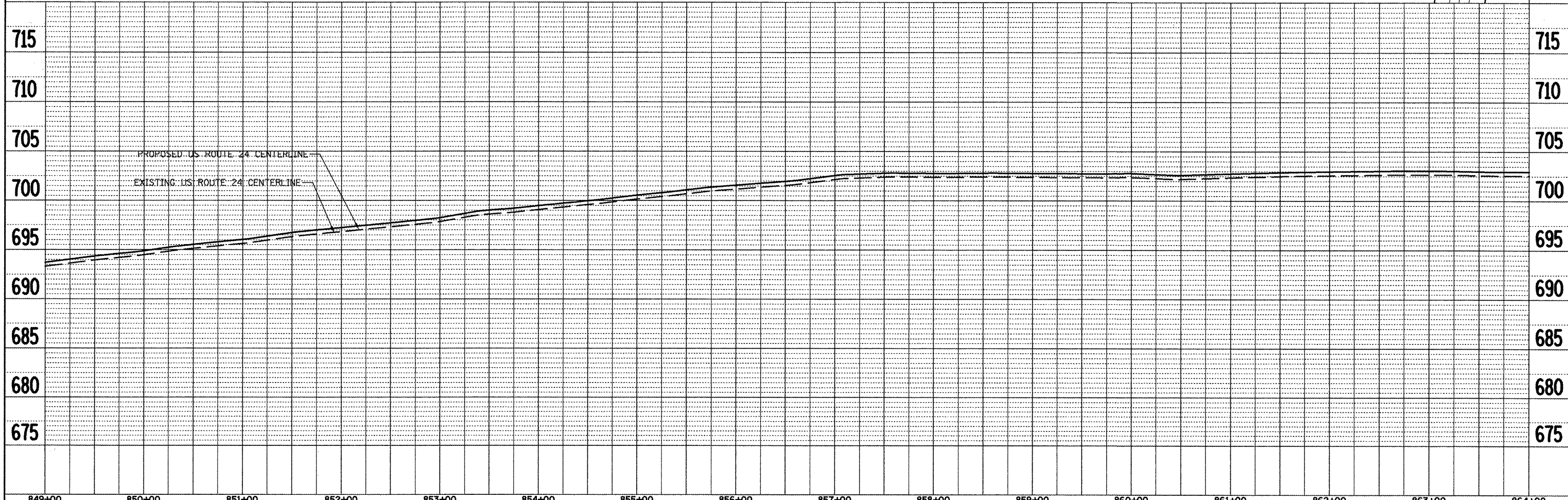
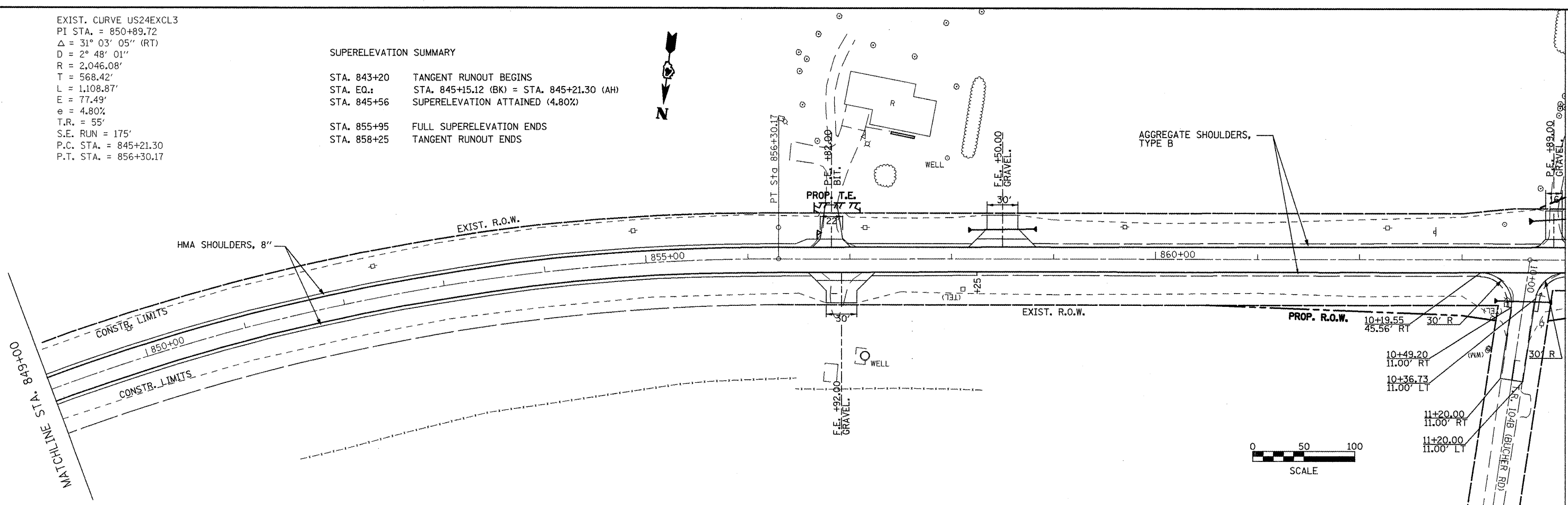


EXIST. CURVE US24EXCL3
 PI STA. = 850+89.72
 $\Delta = 31^\circ 03' 05''$ (RT)
 $D = 2^\circ 48' 01''$
 $R = 2,046.08'$
 $T = 568.42'$
 $L = 1,108.87'$
 $E = 77.49'$
 $e = 4.80\%$
 $T.R. = 55'$
 $S.E. RUN = 175'$
 $P.C. STA. = 845+21.30$
 $P.T. STA. = 856+30.17$

SUPERELEVATION SUMMARY

STA. 843+20 TANGENT RUNOUT BEGINS
 STA. EQ.: STA. 845+15.12 (BK) = STA. 845+21.30 (AH)
 STA. 845+56 SUPERELEVATION ATTAINED (4.80%)
 STA. 855+95 FULL SUPERELEVATION ENDS
 STA. 858+25 TANGENT RUNOUT ENDS



PLAN	SURVEYED	DATE
NOTE BOOK NO.	PLOTTED	BY
NO.	CHECKED	
	BY	
	FILE NAME	

PROFILE	SURVEYED	DATE
NOTE BOOK NO.	PLOTTED	BY
NO.	CHECKED	
	BY	
	FILE NAME	

FILE NAME = plan21.dgn	USER NAME = jochums,jg	DESIGNED - KJH	REVISED -	STATE OF ILLINOIS DEPARTMENT OF TRANSPORTATION	PLAN AND PROFILE	F.A.P. RTE. 317	SECTION 16W-2,RS-4;17W-1,RS-3	COUNTY FULTON	TOTAL SHEETS 240	SHEET NO. 55
PLOT SCALE = 100.0000' / IN.	CHECKED - KJH	REVISED -	SCALE: SHEET NO. 13 OF 14 SHEETS STA. 849+00 TO STA. 864+00			FED. ROAD DIST. NO.	ILLINOIS FED. AID PROJECT			
PLOT DATE = 3/12/2010	DATE -	REVISED -								