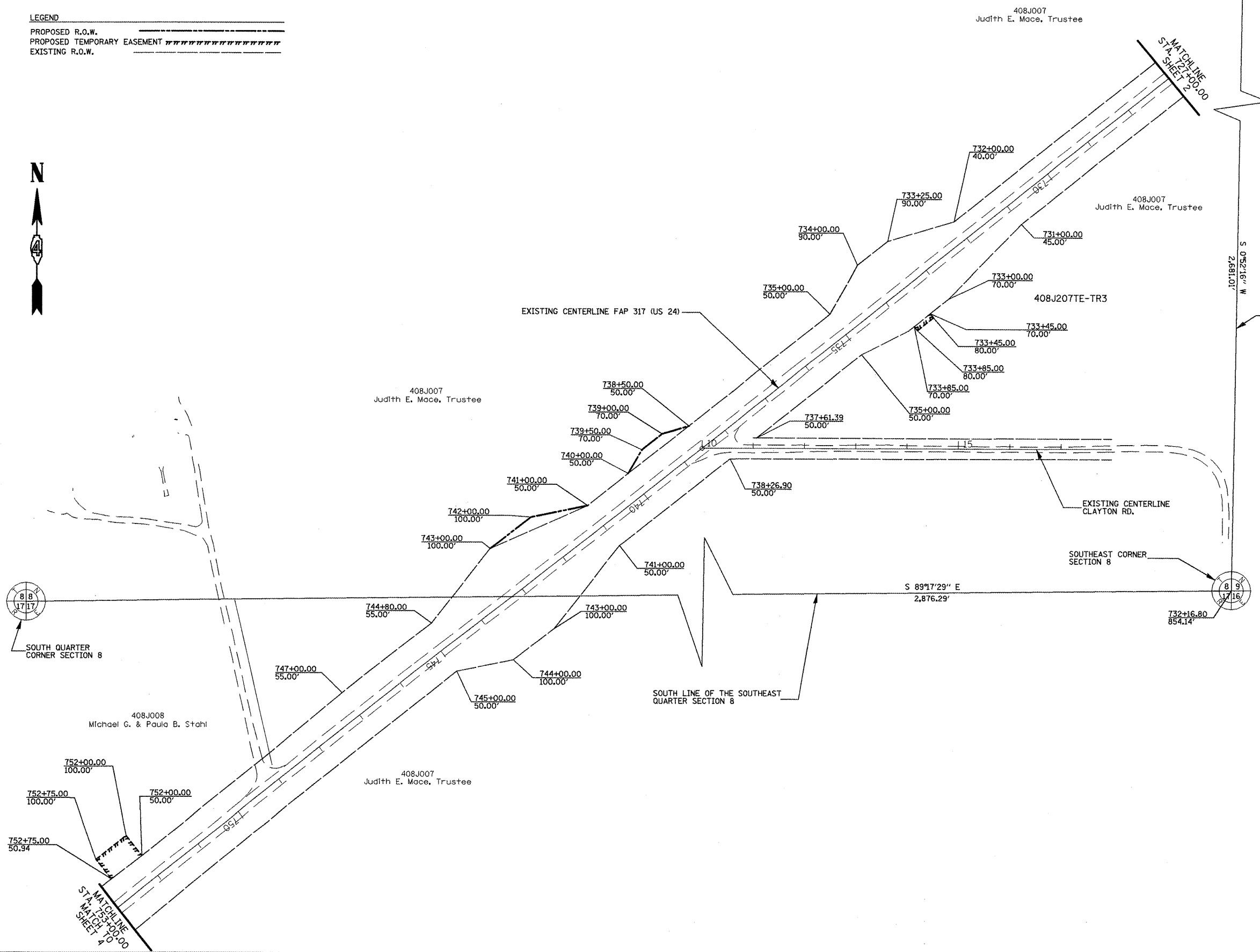


T 3 N R 2 E 4th P.M.

SECTION CORNER COORDINATES	NORTH	EAST
CORNER		
SOUTHEAST CORNER SECTION 8	1,303,743.054	2,260,373.029
SOUTH QUARTER CORNER SECTION 8	1,303,707.481	2,257,496.961

LEGEND
 PROPOSED R.O.W. _____
 PROPOSED TEMPORARY EASEMENT ~~~~~
 EXISTING R.O.W. _____



FOR OLD R.O.W. SEE FILE 10, SHEET 58

PLAT FILE 508



FILE NAME Jobrow.gpk us24a.jkl us24_astoria_summom.m32	USER NAME = ROBERT STICKELMAIER	DESIGNED - PCF	REVISED -
	PLOT SCALE = 1"=100'	DRAWN - RTS	REVISED -
	PLOT DATE = 04-09-2009	CHECKED - PCF	REVISED -
		DATE - 04-09-2009	REVISED -

**STATE OF ILLINOIS
DEPARTMENT OF TRANSPORTATION**

RIGHT OF WAY PLANS	
PROJECT 24-88703	JOB NO. R-94-008-93
SCALE: 1"=100'	SHEET NO. 3 OF 7 SHEETS
STA. 725+00.00 TO STA. 752+00.00	

F.A. RTE.	SECTION	COUNTY	TOTAL SHEETS	SHEET NO.
317	(15,16,17)RS-1,(15BR)3(15Y)1	FULTON	246	84
CONTRACT NO. 88703				
ILLINOIS FED. AID PROJECT				