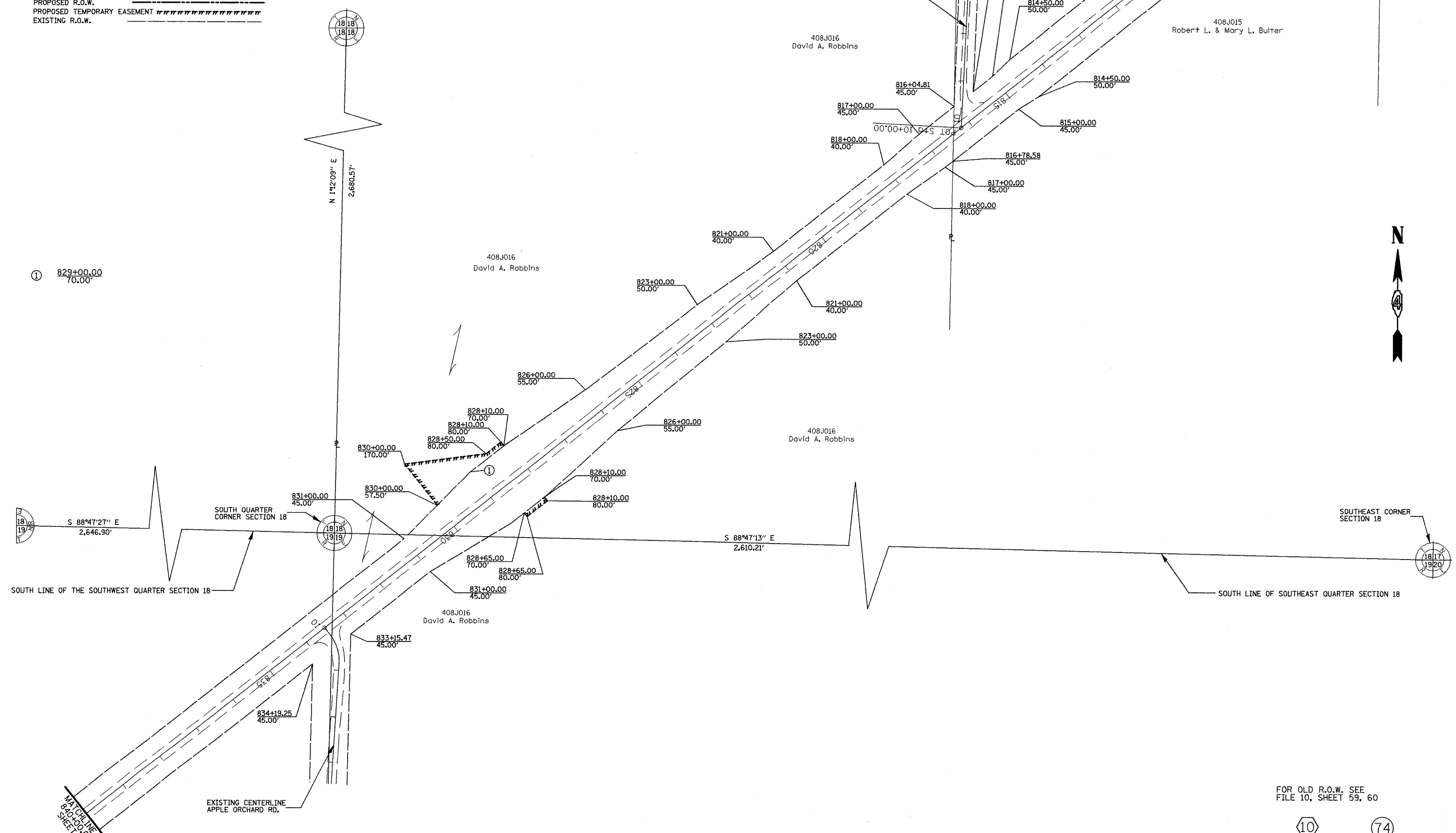


SECTION CORNER COORDINATES
 CORNER NORTH EAST
 SOUTHEAST CORNER SECTION 18 1,298,280.289 2,254,535.827
 SOUTH QUARTER CORNER SECTION 18 1,298,335.549 2,251,926.205

T 3 N R 2 E 4th P.M.

LEGEND
 PROPOSED R.O.W. —————
 PROPOSED TEMPORARY EASEMENT - - - - -
 EXISTING R.O.W. ————



FOR OLD R.O.W. SEE
 FILE 10, SHEET 59, 60

PLAT FILE 508

10 74

FILE NAME: jobrow.gpk us24a.tbl us24_astorfd_summom.m32	USER NAME = ROBERT STICKELMAIER	DESIGNED - PCF	REVISED -	STATE OF ILLINOIS DEPARTMENT OF TRANSPORTATION	RIGHT OF WAY PLANS		F.A. RTE. 317	SECTION (15,16,17)RS-1,(15BR)3(15YB)1	COUNTY FULTON	TOTAL SHEETS 240	SHEET NO. 87
	PLOT SCALE = 1"=100'	CHECKED - PCF	REVISED -		PROJECT 24_88703	JOB NO. R-94-008-93	CONTRACT NO. 88703		ILLINOIS FED. AID PROJECT		
PLOT DATE = 04-09-2009	DATE - 04-09-2009	REVISED -	REVISED -	SCALE: 1"=100'	SHEET NO. 6 OF 7 SHEETS	STA. 810+00.00 TO STA. 840+00.00					