

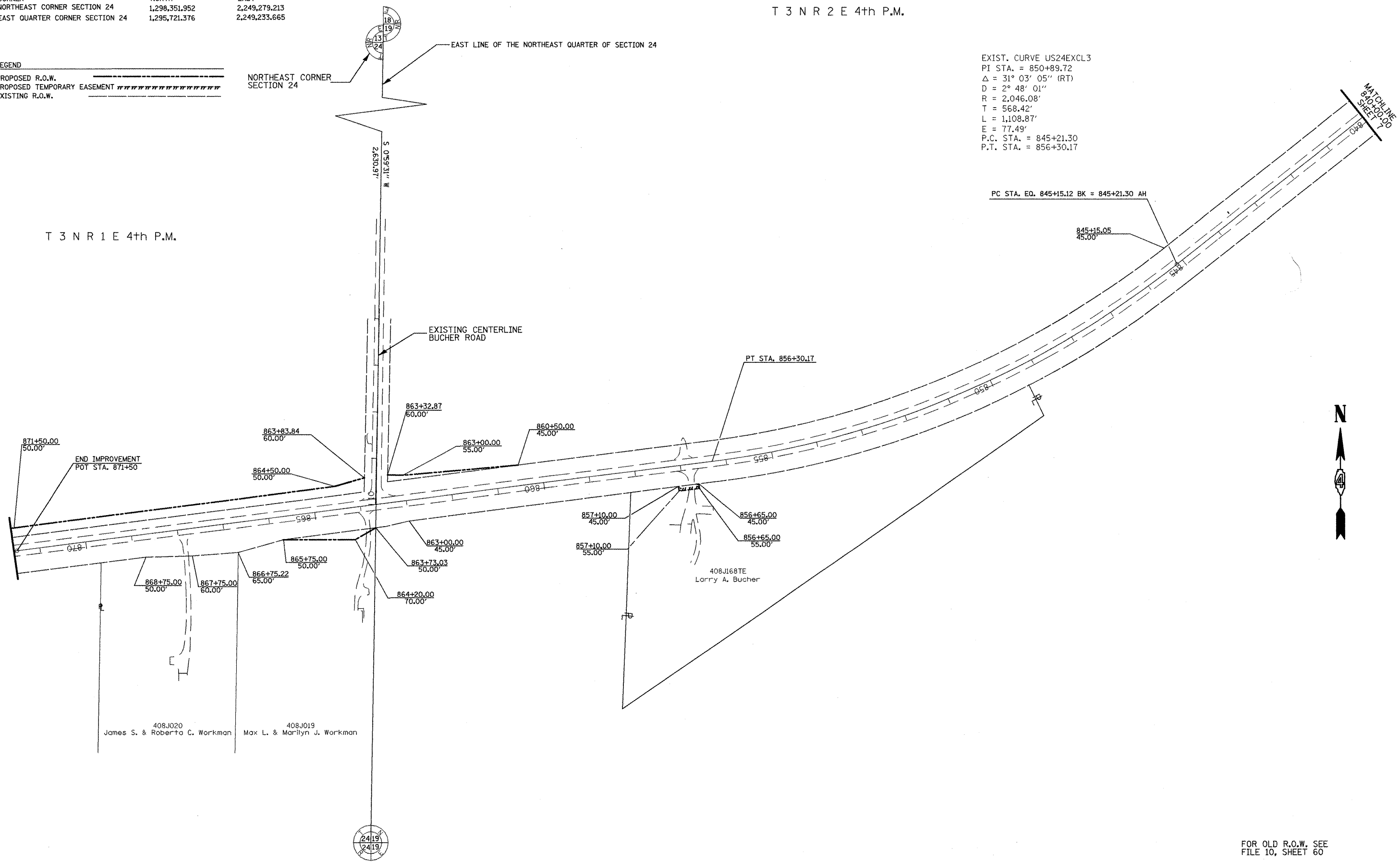
SECTION CORNER COORDINATES
 CORNER NORTH EAST
 NORTHEAST CORNER SECTION 24 1,298,351.952 2,249,279.213
 EAST QUARTER CORNER SECTION 24 1,295,721.376 2,249,233.665

T 3 N R 2 E 4th P.M.

LEGEND
 PROPOSED R.O.W.
 PROPOSED TEMPORARY EASEMENT
 EXISTING R.O.W.

EXIST. CURVE US24EXCL3
 PI STA. = 850+89.72
 $\Delta = 31^\circ 03' 05''$ (RT)
 D = $2^\circ 48' 01''$
 R = 2,046.08'
 T = 568.42'
 L = 1,108.87'
 E = 77.49'
 P.C. STA. = 845+21.30
 P.T. STA. = 856+30.17

T 3 N R 1 E 4th P.M.



FOR OLD R.O.W. SEE
 FILE 10, SHEET 60

PLAT FILE 508



FILE NAME
 Jobrow.gpk
 us24a.tkl
 us24_astoria_summom.m32

USER NAME = ROBERT STICKELMAIER
 PLOT SCALE = 1"=100'
 PLOT DATE = 04-09-2009

DESIGNED - PCF	REVISIONS
DRAWN - RTS	REVISIONS
CHECKED - PCF	REVISIONS
DATE - 04-09-2009	REVISIONS

**STATE OF ILLINOIS
 DEPARTMENT OF TRANSPORTATION**

RIGHT OF WAY PLANS

PROJECT 24-88703	JOB NO. R-94-008-93
SCALE: 1"=100'	SHEET NO. 7 OF 7 SHEETS
STA. 840+00.00 TO STA. 871+50.00	

F.A. RTE.	SECTION	COUNTY	TOTAL SHEETS	SHEET NO.
317	(15,16,17)RS-1,(15BR)3(15YB)1	FULTON	240	88
CONTRACT NO. 88703				
FED. ROAD DIST. NO. ILLINOIS FED. AID PROJECT				