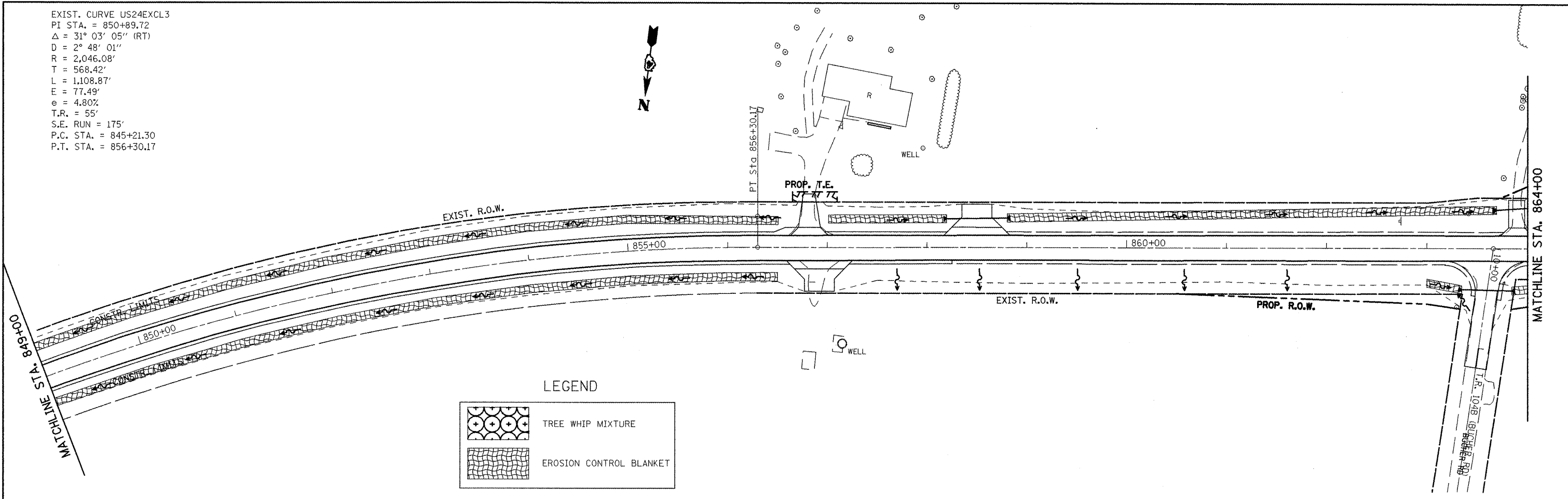
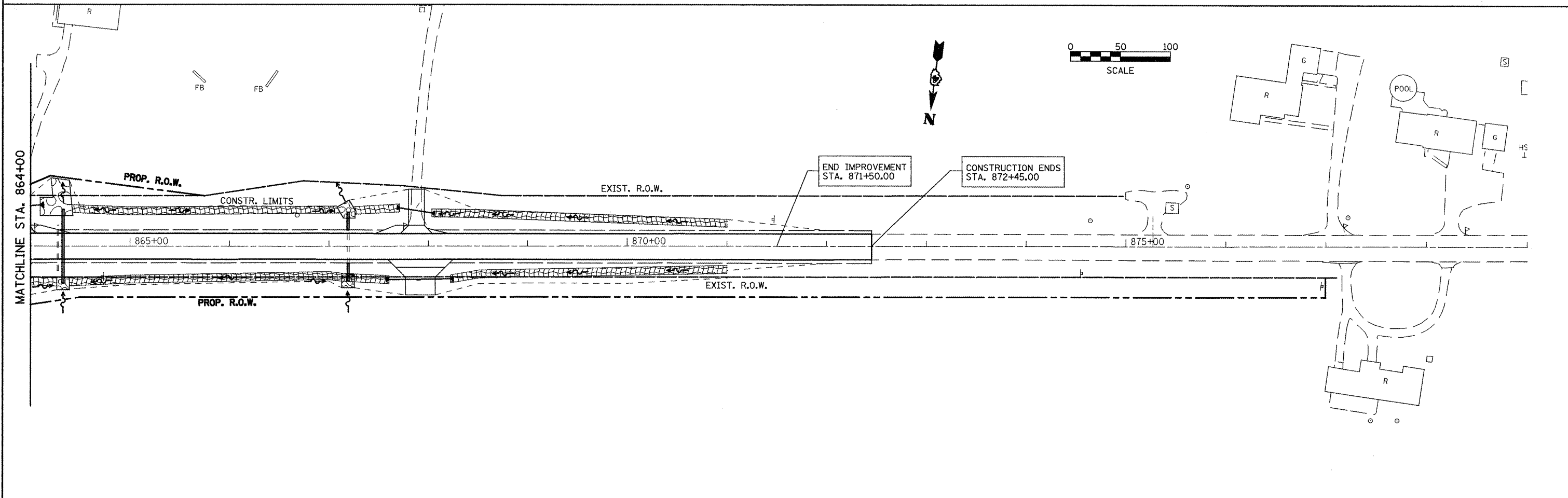


EXIST. CURVE US24EXCL3  
 PI STA. = 850+89.72  
 $\Delta = 31^\circ 03' 05''$  (RT)  
 $D = 2^\circ 48' 01''$   
 $R = 2,046.08'$   
 $T = 568.42'$   
 $L = 1,108.87'$   
 $E = 77.49'$   
 $e = 4.80\%$   
 $T.R. = 55'$   
 $S.E. RUN = 175'$   
 $P.C. STA. = 845+21.30$   
 $P.T. STA. = 856+30.17$



**LEGEND**

	TREE WHIP MIXTURE
	EROSION CONTROL BLANKET



FILE NAME =  
 eroscontrol.dgn

USER NAME = jochuma\_jg  
 PLOT SCALE = 100.0000' / IN.  
 PLOT DATE = 3/10/2010

DESIGNED - KJH	REVISED -
DRAWN - JGJ	REVISED -
CHECKED - KJH	REVISED -
DATE -	REVISED -

**STATE OF ILLINOIS  
 DEPARTMENT OF TRANSPORTATION**

**LANDSCAPING DETAILS**  
 SCALE: SHEET NO. 7 OF 7 SHEETS STA. 849+00 TO STA. 871+90.00

F.A.P. RTE.	SECTION	COUNTY	TOTAL SHEETS	SHEET NO.
317	16W-2,RS-4;17W-1,RS-3	FULTON	240	95
FED. ROAD DIST. NO. ILLINOIS FED. AID PROJECT			CONTRACT NO. 88703	