

F.A.J. RTE.	SECTION	COUNTY	TOTAL SHEETS	SHEET NO.
3537	3264 RS-5	COOK	21	1
FED. ROAD DIST. NO.	ILLINOIS	CONTRACT NO.	60A89	

*21+6=27

D-91-121-06



LOCATION OF SECTION INDICATED THUS: - [black rectangle] -

STATE OF ILLINOIS
DEPARTMENT OF TRANSPORTATION
DIVISION OF HIGHWAYS

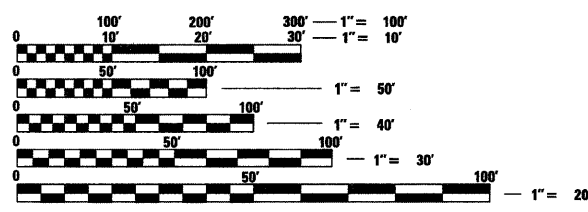
**PROPOSED
HIGHWAY PLANS**

FAU-3537 (U.S. 20-LAKE ST.)
COUNTY LINE RD. TO U.S. 12 /45 (MANNHEIM RD.)
SECTION 3264 RS-5
RESURFACING IMPROVEMENT
COOK COUNTY
C-91-121-06

FOR INDEX OF SHEETS, SEE SHEET NO. 2

IMPROVEMENT LOCATED IN THE VILLAGE OF:
MELROSE PARK, NORTHLAKE, STONE PARK

CONSULTANT PROJECT ENGINEER: ISSAM RAYYAN (847) 705-4556



FULL SIZE PLANS HAVE BEEN PREPARED USING STANDARD ENGINEERING SCALES. REDUCED SIZED PLANS WILL NOT CONFORM TO STANDARD SCALES. IN MAKING MEASUREMENTS ON REDUCED PLANS, THE ABOVE SCALES MAY BE USED.

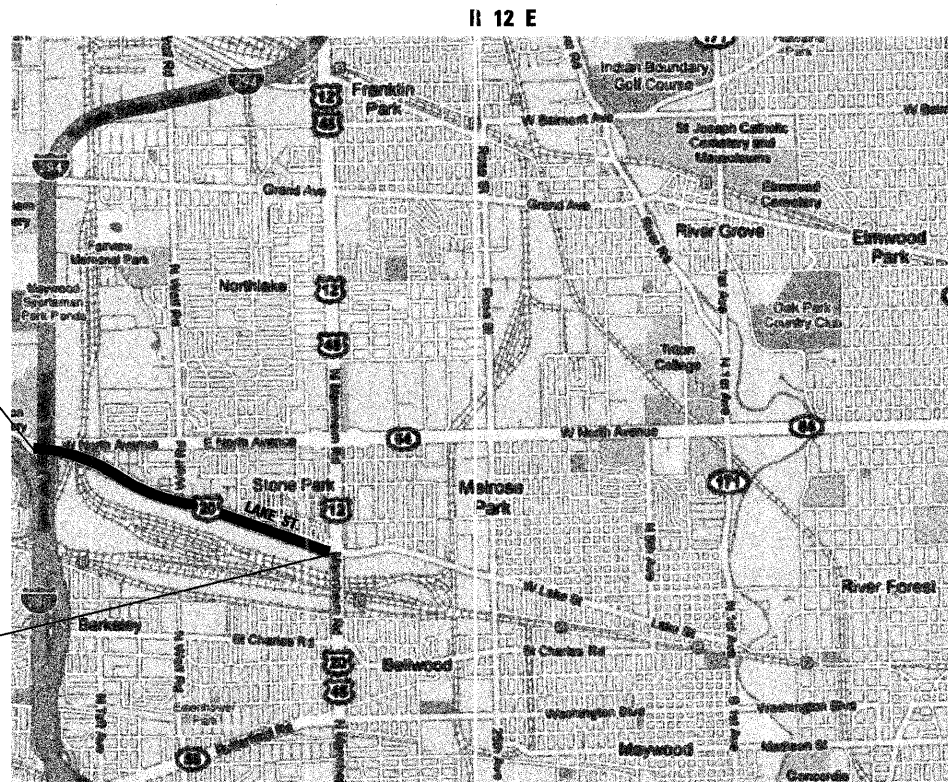
J.U.L.I.E.
JOINT UTILITY LOCATION INFORMATION FOR EXCAVATION
1-800-892-0123
OR 811

benesch
alfred benesch & company
Engineers • Surveyors • Planners
205 North Michigan Avenue, Suite 2400
Chicago, Illinois 60601
312-565-0450

CONTRACT NO. 60A89

PROJECT BEGINS
STA. 82+90

PROJECT ENDS
STA. 185+50



TOWNSHIP OF PROVISO

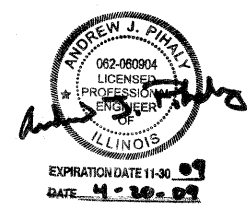
GROSS AND NET LENGTH OF IMPROVEMENT = 10,260 LIN. FEET OR 1.943 MILES



T 39 N

TRAFFIC DATA
ADT (2006) = 22,500
SPEED LIMIT
U.S. 20 (NORTH AVE. TO MANNHEIM RD.) = 35 MPH

ANDREW J. PIHALY
ALFRED BENESCH & CO.



STATE OF ILLINOIS
DEPARTMENT OF TRANSPORTATION
DIVISION OF HIGHWAYS

SUBMITTED APRIL 21 20 09

Devin M. O'Keefe DEPUTY DIRECTOR OF HIGHWAYS, REGION ENGINEER
May 1, 20 09

Charles J. Ingersoll ENGINEER OF DESIGN AND ENVIRONMENT
May 1, 20 09

Christine M. Reed DIRECTOR OF HIGHWAYS, CHIEF ENGINEER

PRINTED BY THE AUTHORITY
OF THE STATE OF ILLINOIS