

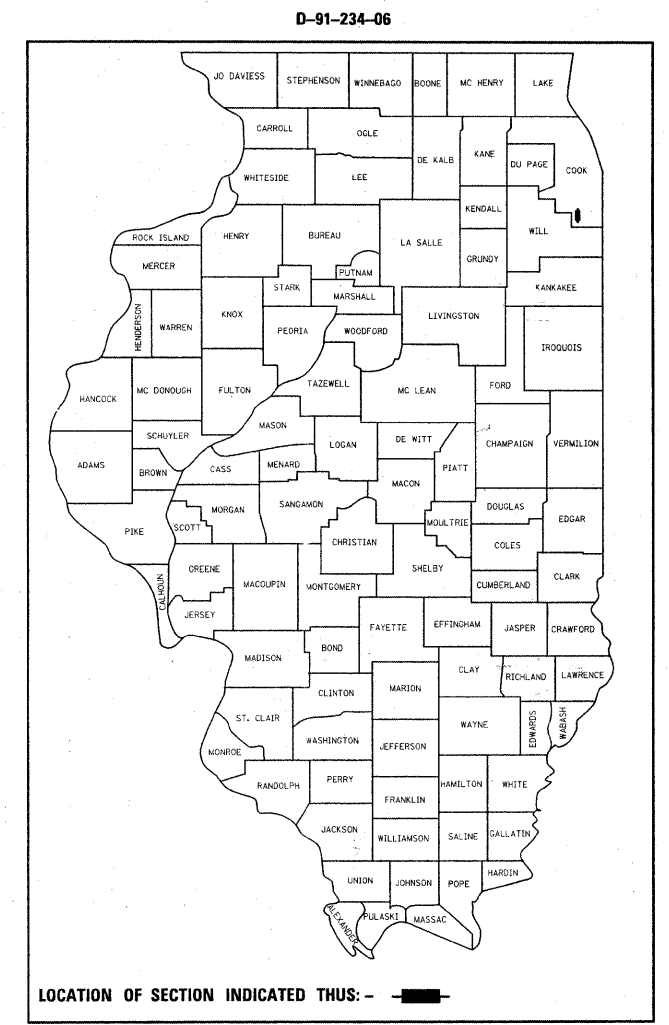
F.A.U. RTE.	SECTION	COUNTY	TOTAL SHEETS	SHEET NO.
2845	(34&75) RS-4	COOK	28	1
FED. ROAD DIST. NO. 1		ILLINOIS	CONTRACT NO. 60B05	

STATE OF ILLINOIS
DEPARTMENT OF TRANSPORTATION
DIVISION OF HIGHWAYS

FOR INDEX OF SHEETS, SEE SHEET NO. 2

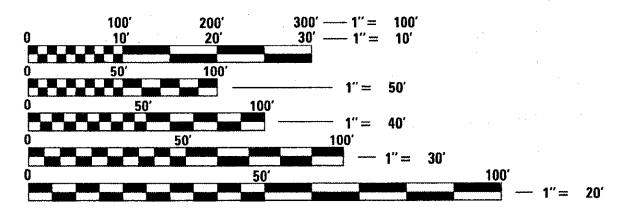
IMPROVEMENT IS LOCATED IN THE CITY OF CHICAGO HEIGHTS AND THE VILLAGES OF OLYMPIA FIELDS AND FLOSSMOOR

**PROPOSED
HIGHWAY PLANS**
FAU 2845: WESTERN AVENUE
US 30 (LINCOLN HIGHWAY) TO HUTCHINSON ROAD
SECTION: (34&75) RS-4
RESURFACING (3P)
COOK COUNTY
C-91-234-06



TRAFFIC DATA

US 30 (LINCOLN HIGHWAY) TO VOLLMER ROAD
2006 ADT = 18,400
POSTED SPEED LIMIT = 40 MPH
VOLLMER ROAD TO HUTCHINSON ROAD
2006 ADT = 6,500
POSTED SPEED LIMIT = 35 MPH

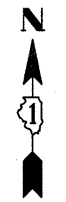
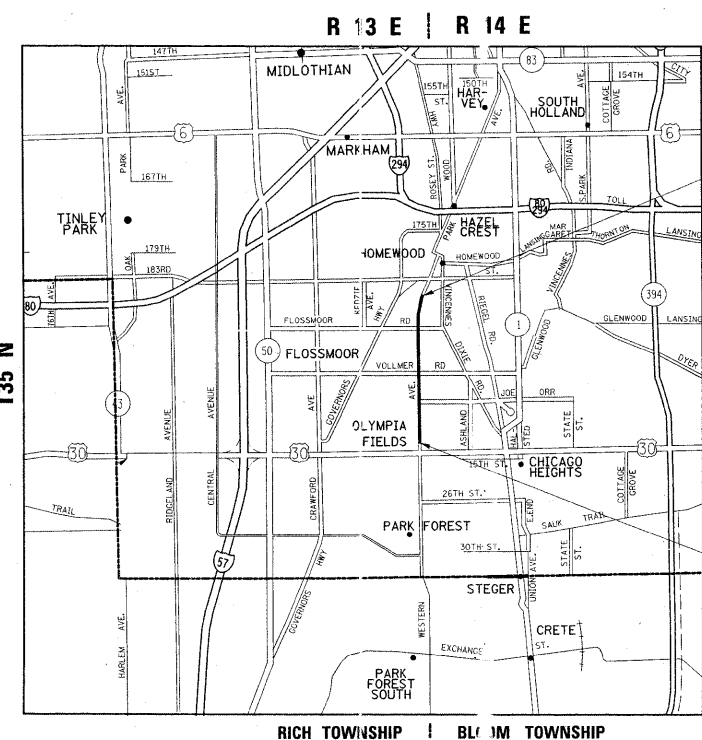


FULL SIZE PLANS HAVE BEEN PREPARED USING STANDARD ENGINEERING SCALES. REDUCED SIZED PLANS WILL NOT CONFORM TO STANDARD SCALES. IN MAKING MEASUREMENTS ON REDUCED PLANS, THE ABOVE SCALES MAY BE USED.

J.U.L.I.E.
JOINT UTILITY LOCATION INFORMATION FOR EXCAVATION
1-800-892-0123 (OR 811)

PROJECT ENGINEER: JENPAI P. CHANG (847) 705 - 4432
PROJECT MANAGER: KEN ENG

CONTRACT NO. 60B05



IMPROVEMENT ENDS
STATION 163 + 86

IMPROVEMENT BEGINS
STATION 08 + 84

GROSS AND NET LENGTH OF PROJECT = 15,39.00 FEET = 2.94 MILES

STATE OF ILLINOIS
DEPARTMENT OF TRANSPORTATION
DIVISION OF HIGHWAYS

SUBMITTED APRIL 21 2009

Diana M. O'Keefe
DEPUTY DIRECTOR OF HIGHWAYS, REGION ENGINEER

May 1, 2009
Charles J. Ingersoll
ENGINEER OF DESIGN AND ENVIRONMENT

May 1, 2009
Christine M. Reed
DIRECTOR OF HIGHWAYS, CHIEF ENGINEER

PRINTED BY THE AUTHORITY
OF THE STATE OF ILLINOIS