

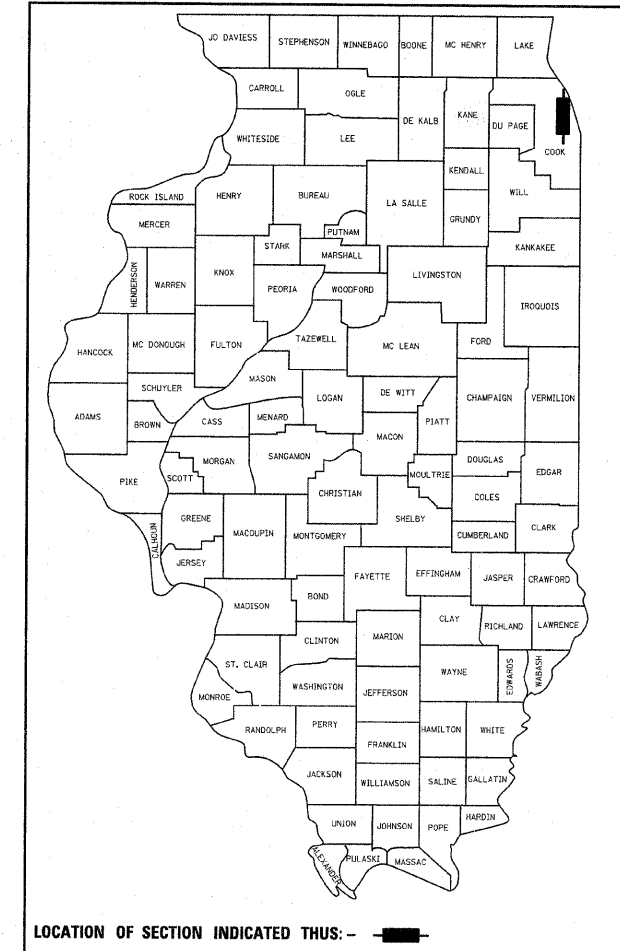
STATE OF ILLINOIS
 DEPARTMENT OF TRANSPORTATION
 DIVISION OF HIGHWAYS

**PROPOSED
 HIGHWAY PLANS**

FAU 2714: 25TH AVENUE
 ARMITAGE AVE TO LAKE ST.
 SECTION: 1010.2 RS
 RESURFACING
 COOK COUNTY
 C-91-364-06

F.A.U. RTE.	SECTION	COUNTY	TOTAL SHEETS	SHEET NO.
2714	1010.2 RS	COOK	24	1
FED. ROAD DIST. NO. 1 ILLINOIS		CONTRACT NO. 60B51		

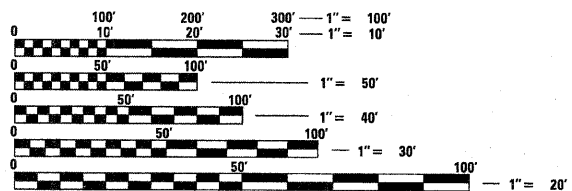
D-91-364-06



LOCATION OF SECTION INDICATED THUS: -

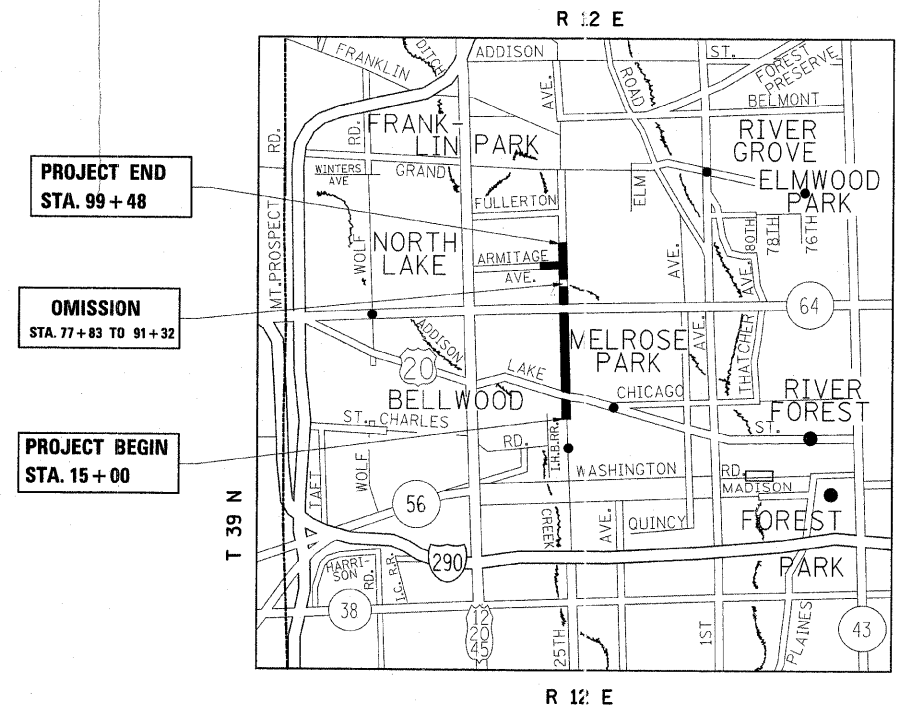
FOR INDEX OF SHEETS, SEE SHEET NO. 2

PROJECT LOCATED IN THE VILLAGE
 OF MELROSE PARK



FULL SIZE PLANS HAVE BEEN PREPARED USING STANDARD ENGINEERING SCALES. REDUCED SIZED PLANS WILL NOT CONFORM TO STANDARD SCALES. IN MAKING MEASUREMENTS ON REDUCED PLANS, THE ABOVE SCALES MAY BE USED.

J.U.L.I.E.
 JOINT UTILITY LOCATION INFORMATION FOR EXCAVATION
 1-800-892-0123
 OR 811



PROJECT END
 STA. 99+48

OMISSION
 STA. 77+83 TO 91+32

PROJECT BEGIN
 STA. 15+00

TRAFFIC DATA
 Armitage Ave. to ILL 64
 2009 ADT = 24,900
 Speed Limit = 35 MPH

ILL 64 to Lake St.
 2009 ADT = 14,400
 Speed Limit = 30 MPH

PROJECT ENGINEER: JOSE DOMIGUEZ (847)705-4385
 PROJECT MANAGER: KEN ENG

CONTRACT NO. 60B51

GROSS AND NET LENGTH = 6938 FT. = 1.31 MILE

STATE OF ILLINOIS
 DEPARTMENT OF TRANSPORTATION
 DIVISION OF HIGHWAYS

SUBMITTED APRIL 16, 2009

Diana M. O'Keefe 95
 DEPUTY DIRECTOR OF HIGHWAYS, REGION ENGINEER

May 1, 2009
Charles S. Ingersoll RD
 ENGINEER OF DESIGN AND ENVIRONMENT

May 1, 2009
Christine M. Reed RD
 DIRECTOR OF HIGHWAYS, CHIEF ENGINEER

PRINTED BY THE AUTHORITY
 OF THE STATE OF ILLINOIS