

F.A.P. RTE.	SECTION	COUNTY	TOTAL SHEETS	SHEET NO.
541	W-RS-3	LAKE	23	1
		ILLINOIS	CONTRACT NO. 60B55	

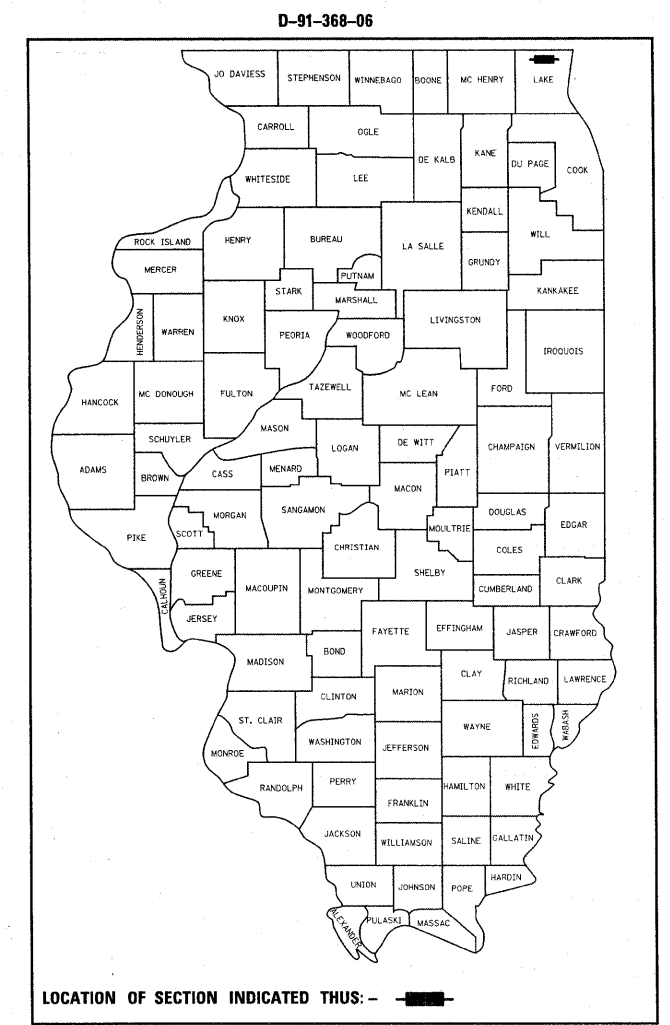
STATE OF ILLINOIS
DEPARTMENT OF TRANSPORTATION
DIVISION OF HIGHWAYS

PROPOSED HIGHWAY PLANS

F.A.P. 541: IL-132 (GRAND AVE.)
IL-59 TO SHEEHAN DR.
SECTION: W-RS-3
RESURFACING (3P)

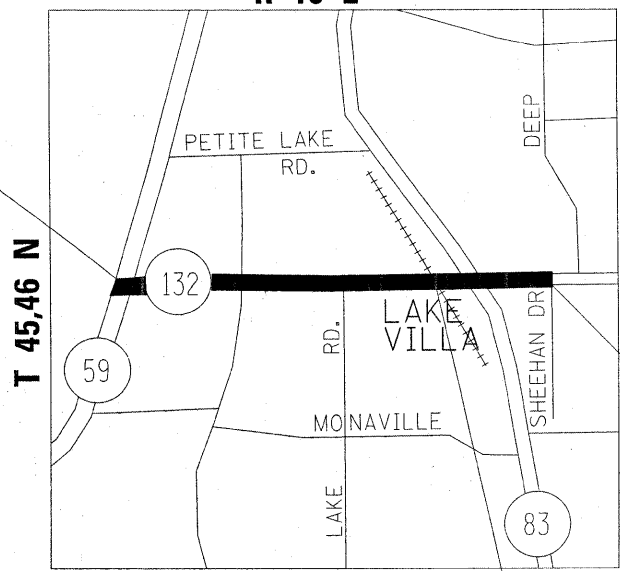
FOR INDEX OF SHEETS, SEE SHEET NO. 2

PROJECT IS LOCATED IN THE
VILLAGE OF LAKE VILLA



LAKE COUNTY
C-91-368-06
R 10 E

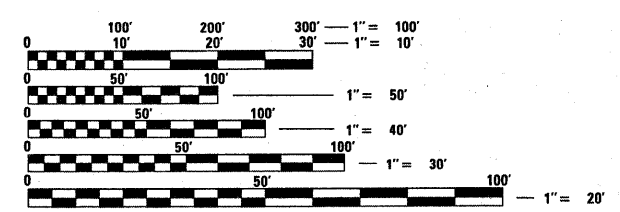
PROJECT BEGINS
STA. 10 + 19



TRAFFIC DATA
2007 ADT = 10,800
SPEED LIMIT = 30, 45, 50 MPH

PROJECT ENDS
STA. 173 + 71

OMISSION AT
R.R. X-ING, 22'



FULL SIZE PLANS HAVE BEEN PREPARED USING STANDARD ENGINEERING SCALES. REDUCED SIZED PLANS WILL NOT CONFORM TO STANDARD SCALES. IN MAKING MEASUREMENTS ON REDUCED PLANS, THE ABOVE SCALES MAY BE USED.

J.U.L.I.E.
JOINT UTILITY LOCATION INFORMATION FOR EXCAVATION
1-800-892-0123
OR 811

PROJECT ENGINEER: DAN WILGREEN 1-(847) 705-4240
PROJECT MANAGER: KEN ENG

GROSS LENGTH = 16,352 FT. (3.097 MILES)
NET LENGTH = 16,330 FT. (3.093 MILES)

CONTRACT NO. 60B55

STATE OF ILLINOIS
DEPARTMENT OF TRANSPORTATION
DIVISION OF HIGHWAYS

SUBMITTED MARCH 30, 2009

Diana M. O'Keefe DEPUTY DIRECTOR OF HIGHWAYS, REGION ENGINEER

May 1, 2009
Charles J. Ingersoll ENGINEER OF DESIGN AND ENVIRONMENT

May 1, 2009
Christine M. Reed DIRECTOR OF HIGHWAYS, CHIEF ENGINEER

PRINTED BY THE AUTHORITY
OF THE STATE OF ILLINOIS

DIST. 1 DESIGN - PLAN PREPARATION ENGINEER: DANIEL WILGREEN (847) 705-4240