

F.A.U. RTE.	SECTION	COUNTY	TOTAL SHEETS	SHEET NO.
3592	(44 & 45) X-RS	LAKE	23	1
FED. ROAD DIST. NO.	ILLINOIS	CONTRACT NO. 60E69		

STATE OF ILLINOIS
DEPARTMENT OF TRANSPORTATION

DIVISION OF HIGHWAYS

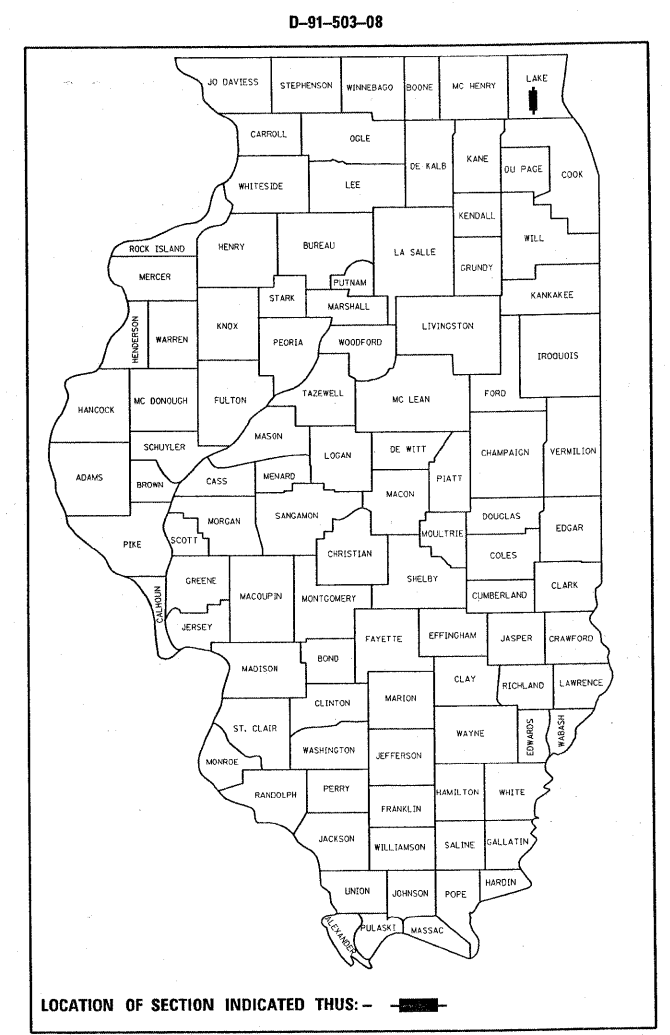
**PROPOSED
HIGHWAY PLANS**

FAP ROUTE 344 (US 45)
SECTION: (44 & 45) X-RS
ALLANSON ROAD TO US 45/IL 83
RESURFACING (3P)

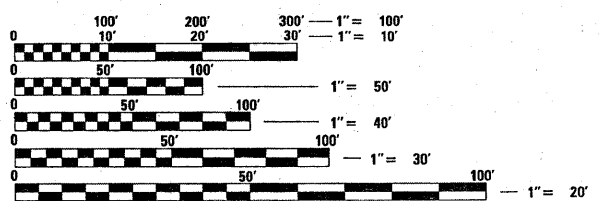
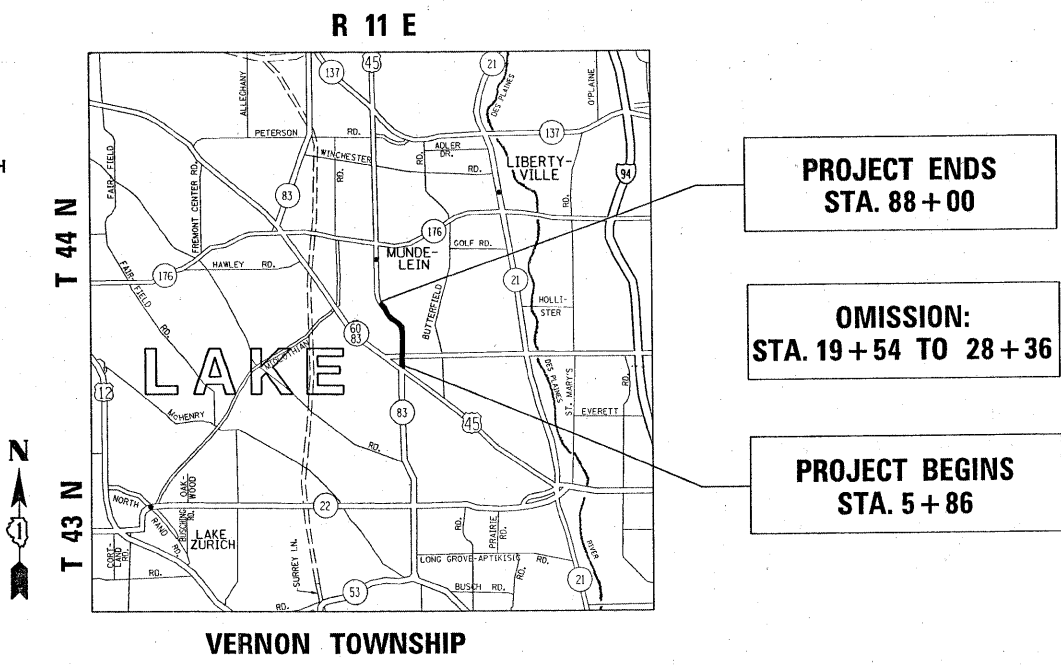
LAKE COUNTY
C-91-503-08

FOR INDEX OF SHEETS, SEE SHEET NO. 2

PROJECT LOCATED IN THE
VILLAGE OF MUNDELEIN



TRAFFIC DATA
2006 ADT = 31,100
POSTED SPEED LIMIT = 35 MPH



FULL SIZE PLANS HAVE BEEN PREPARED USING STANDARD ENGINEERING SCALES. REDUCED SIZED PLANS WILL NOT CONFORM TO STANDARD SCALES. IN MAKING MEASUREMENTS ON REDUCED PLANS, THE ABOVE SCALES MAY BE USED.

J.U.L.I.E.
JOINT UTILITY LOCATION INFORMATION FOR EXCAVATION
1-800-892-0123
OR 811

GROSS LENGTH OF PROJECT = 8,214 LIN FT = 1.6 MILES
NET LENGTH OF PROJECT = 7,332 LIN. FT. = 1.4 MILES

PROJECT ENGINEER: DANIEL WILGREEN /(847) 705-4240
PROJECT MANAGER: KEN ENG /(847) 705-4247

CONTRACT NO. 60E69

STATE OF ILLINOIS
DEPARTMENT OF TRANSPORTATION
DIVISION OF HIGHWAYS

SUBMITTED MARCH 24, 2009
Diana M. O'Keefe
DEPUTY DIRECTOR OF HIGHWAYS, REGION ENGINEER

May 1, 2009
Charles J. Ingersoll
ENGINEER OF DESIGN AND ENVIRONMENT

May 1, 2009
Christine M. Reed
DIRECTOR OF HIGHWAYS, CHIEF ENGINEER

**PRINTED BY THE AUTHORITY
OF THE STATE OF ILLINOIS**