

LEGEND:

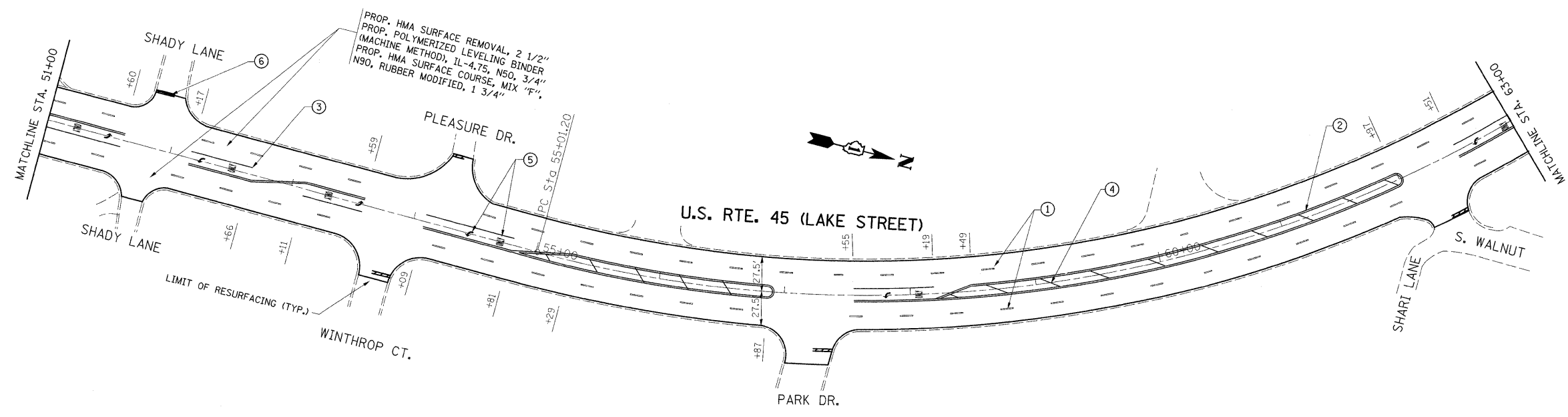
- ① PROPOSED THERMOPLASTIC PAVEMENT MARKING LINE 4", SKIP DASH @ 30' SKIP AND 10' DASH, WHITE (TYP.)
- ② PROPOSED THERMOPLASTIC PAVEMENT MARKING LINE 4", DOUBLE LINE @ 11" C-C, YELLOW (TYP.)
- ③ PROPOSED THERMOPLASTIC PAVEMENT MARKING LINE 6", TURN LANE, WHITE (TYP.)
- ④ PROPOSED THERMOPLASTIC PAVEMENT MARKING LINE 12", DIAGONALS @ 45°, YELLOW (TYP.)
- ⑤ PROPOSED THERMOPLASTIC PAVEMENT MARKING LETTERS AND SYMBOLS, WHITE (TYP.)
- ⑥ PROPOSED THERMOPLASTIC PAVEMENT MARKING LINE 24", STOP LINE, WHITE (TYP.)
- ⑦ PROPOSED THERMOPLASTIC PAVEMENT MARKING LINE 8", WHITE (TYP.)
- ⑧ PROPOSED THERMOPLASTIC PAVEMENT MARKING LINE 4", SOLID AND SKIP DASH LINES (5 1/2 C-C), YELLOW (TYP.)
- ⑨ PROPOSED THERMOPLASTIC PAVEMENT MARKING LEFT ARROW IN PAIRS, WHITE (TYP.)
- ⑩ PROPOSED THERMOPLASTIC PAVEMENT MARKING LINE 6", DOTTED LINES @ 2' LINE AND 6' SPACE, WHITE (TYP.)
- ⑪ PROPOSED THERMOPLASTIC PAVEMENT MARKING LINE 6", CROSSWALK LINES, WHITE (TYP.)
- ⑫ PROPOSED THERMOPLASTIC PAVEMENT MARKING LINE 12", LONGITUDINAL BARS (SCHOOL), WHITE (TYP.)
- ⑬ PROPOSED THERMOPLASTIC PAVEMENT MARKING LINE 6", SOLID DIAGONALS, WHITE (TYP.)

NOTE:

LIMIT OF RESURFACING ON SIDE ROADS AND STREETS SHALL BE TO THE RADIUS OF RETURN OR AS DIRECTED BY THE ENGINEER.

ALL PERMANENT PAVEMENT MARKINGS SHALL BE THERMOPLASTIC UNLESS OTHERWISE NOTED. SEE "DISTRICT ONE TYPICAL PAVEMENT MARKINGS" DETAIL (TC-13).

RAISED REFLECTIVE PAVEMENT MARKERS SHALL BE USED THROUGH THE IMPROVEMEN LIMITS. SEE "DISTRICT ONE TYPICAL APPLICATIONS RAISED REFLECTIVE PAVEMENT MARKERS" DETAIL (TC-11).



| | | | | | | | | | | | |
|--|-----------------------|------------|-----------|---|---|---|----------------|--------|--------------|-----------|--|
| FILE NAME = | USER NAME = shiranisb | DESIGNED - | REVISED - | STATE OF ILLINOIS DEPARTMENT OF TRANSPORTATION | ROADWAY AND PAVEMENT MARKING PLANS US 45 /ALLANSON ROAD TO US 45L 83 | F.A.P. RTE. | SECTION | COUNTY | TOTAL SHEETS | SHEET NO. | |
| cd:\pwork\WIDOT\SHIRANISB\dms98495\shiranisb.dgn | | DRAWN - | REVISED - | | | 344 | (44 & 45) X-RS | LAKE | 23 | 7 | |
| PLOT SCALE = 50.0000' / IN. | | CHECKED - | REVISED - | | | CONTRACT NO. 60E69 | | | | | |
| PLOT DATE = 4/1/2009 | | DATE - | REVISED - | | | FED. ROAD DIST. NO. ILLINOIS FED. AID PROJECT | | | | | |
| | | | | | SCALE: | SHEET NO. | OF SHEETS | STA. | TO STA. | | |