

F.A.P. RTE.	SECTION	COUNTY	TOTAL SHEETS	SHEET NO.
346	(124 & 125) X-RS-5	LAKE	25	1
FED. ROAD DIST. NO.	ILLINOIS	CONTRACT NO. 60F28		

D-91-059-09

FOR INDEX OF SHEETS, SEE SHEET NO. 2

PROJECT LOCATED IN THE VILLAGE OF GURNEE AND PARK CITY

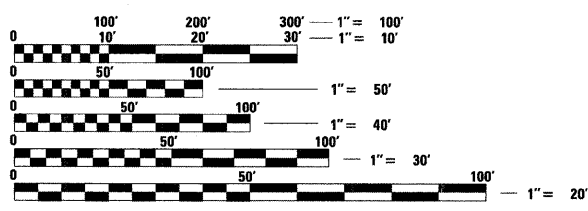
STATE OF ILLINOIS
DEPARTMENT OF TRANSPORTATION
DIVISION OF HIGHWAYS

**PLANS FOR PROPOSED
FEDERAL AID HIGHWAY**

F.A.P. ROUTE 346 (SKOKIE HWY/US ROUTE 41)
SECTION: (124 & 125) X-RS-5
WASHINGTON ST. TO IL ROUTE 21
RESURFACING (3P)
LAKE COUNTY
C-91-059-09

ADT 46,100 (2007)
SPEED LIMIT 45 MPH

OMMISSIONS
STA. 462+55 TO STA. 464+74
AND STA 532+47 TO 535+07

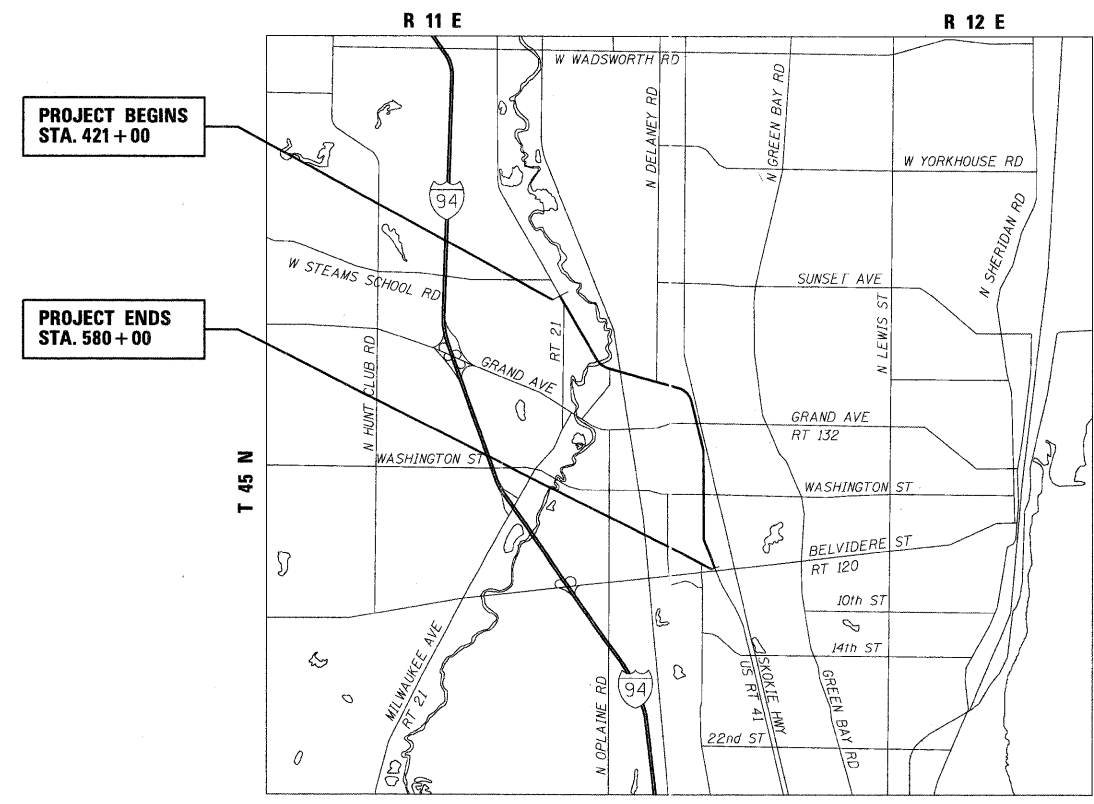


FULL SIZE PLANS HAVE BEEN PREPARED USING STANDARD ENGINEERING SCALES. REDUCED SIZED PLANS WILL NOT CONFORM TO STANDARD SCALES. IN MAKING MEASUREMENTS ON REDUCED PLANS, THE ABOVE SCALES MAY BE USED.

J.U.L.I.E.
JOINT UTILITY LOCATION INFORMATION FOR EXCAVATION
1-800-892-0123
OR 811

PROJECT ENGINEER: REJENDRA C. SHAH (847) 705-4555
PROJECT MANAGER: CATHERINE KIBBLE (847) 705-4269

CONTRACT NO. 60F28



LOCATION SKETCH

GROSS LENGTH OF PROJECT = 15,900' = 3.011 MI
NET LENGTH OF PROJECT = 15,421' = 2.920 MI

STATE OF ILLINOIS
DEPARTMENT OF TRANSPORTATION
DIVISION OF HIGHWAYS

SUBMITTED APRIL 21, 2009

Diane M. O'Keefe DE
DEPUTY DIRECTOR OF HIGHWAYS, REGION ENGINEER
May 1, 2009

Charles J. Ingersoll EIT
ENGINEER OF DESIGN AND ENVIRONMENT
May 1, 2009

Christine M. Reed EIT
DIRECTOR OF HIGHWAYS, CHIEF ENGINEER

PRINTED BY THE AUTHORITY OF THE STATE OF ILLINOIS

LONGO, INC.
CONSULTING ENGINEERS
1560 WALL ST, SUITE 222
NAPEVILLE, ILLINOIS 60063 PH: 630/ 577-9100

WILLIAM H. REED
062-047827
REGISTERED PROFESSIONAL ENGINEER
William H. Reed
Expires 1/30/09