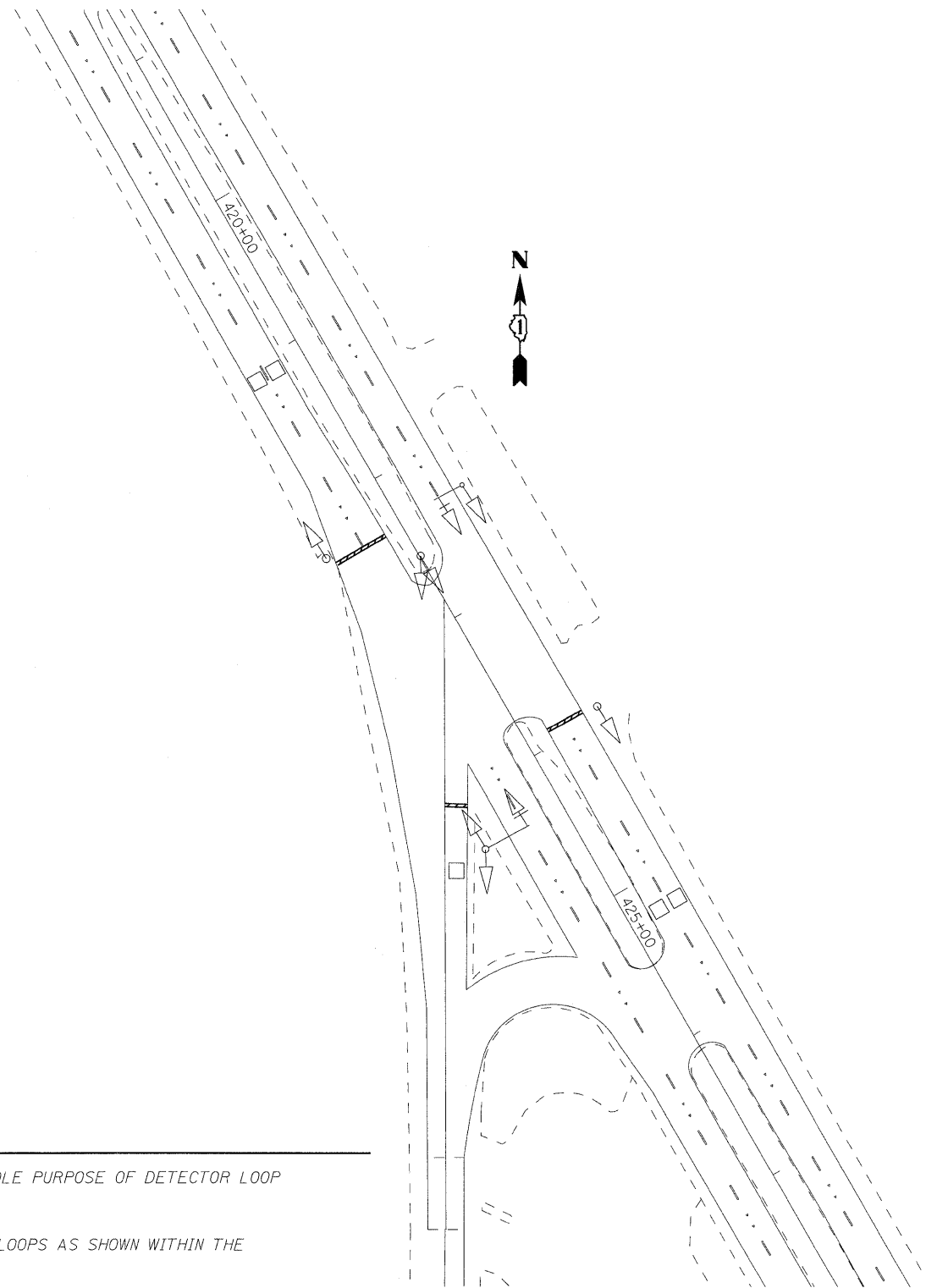
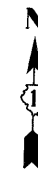


TRAFFIC SIGNAL LEGEND

	PROPOSED	EXISTING
DETECTOR LOOP		
SIGNAL HEAD		
G.S. CONDUIT IN TRENCH OR PUSHED		
SIGNAL HEAD WITH BACKPLATE		
RACEWAY FOR MAGNETIC DETECTOR, TYPE I OR II		
VEHICLE DETECTOR, NON-COMPENSATED MAGNETIC TYPE		

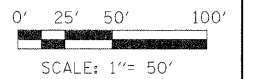


NOTES:

1. THIS PLAN IS FOR THE SOLE PURPOSE OF DETECTOR LOOP REPLACEMENTS ONLY.
2. REPLACE ALL DETECTOR LOOPS AS SHOWN WITHIN THE RESURFACING LIMITS.
3. ALL DETECTOR LOOPS ARE 6'x6' UNLESS OTHERWISE SHOWN.
4. AS-BUILT PLAN SHEETS PROVIDED BY IDOT HAVE BEEN INCLUDED FOR BIDDING PURPOSES ONLY, AND DO NOT NECESSARILY REFLECT ACTUAL FIELD CONDITIONS. PROPOSED DETECTOR LOOPS SHALL BE REPLACED AT ALL EXISTING LOCATIONS WITHIN THE PROJECT LIMITS, IN ACCORDANCE WITH STANDARD TS-07, SPECIAL PROVISIONS, AND AS DIRECTED BY THE ENGINEER.

THIS PLAN IS FOR THE SOLE PURPOSE OF DETECTOR LOOP REPLACEMENTS ONLY

REPLACE ALL DETECTOR LOOPS AS SHOWN (WITHIN THE RESURFACING LIMITS)



LOCO, INC.
CONSULTING ENGINEERS
1560 WALL ST, SUITE 222
NAPERVILLE, ILLINOIS 60563 PH: 630/577-9100

USER NAME = #USERS#	DESIGNED - MJY & ST	REVISED -
	DRAWN - ST	REVISED -
PLOT SCALE = #SCALE#	CHECKED - WHE	REVISED -
PLOT DATE = #DATE#	DATE - 04/22/2009	REVISED -

**STATE OF ILLINOIS
DEPARTMENT OF TRANSPORTATION**

**US ROUTE 41
DETECTOR LOOP PLAN - MILWAUKEE AVE INTERSECTION**

F.A.P. RTE.	SECTION	COUNTY	TOTAL SHEETS	SHEET NO.
346	(124 & 125) X-RS-5	LAKE	25	12
C-91-059-09			CONTRACT NO. 60F28	
FED. ROAD DIST. NO. ILLINOIS FED. AID PROJECT				

SCALE: 1"=50' SHEET NO. 12 OF 25 SHEETS STA. 421+00 TO STA. 580+00