

F.A.U. RTE.	SECTION	COUNTY	TOTAL SHEETS	SHEET NO.
3887	17 RS-4	KANE	20	1
FED. ROAD DIST. NO.	ILLINOIS	CONTRACT NO. 60F32		

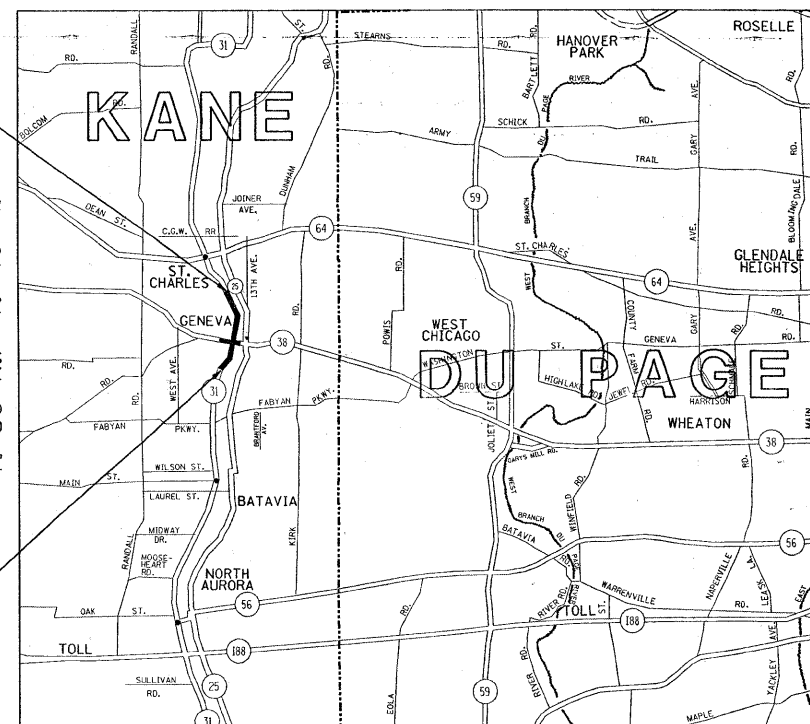
**STATE OF ILLINOIS  
DEPARTMENT OF TRANSPORTATION  
DIVISION OF HIGHWAYS**

**PROPOSED HIGHWAY PLANS**

**F.A.U. ROUTE 3887: ILL 31 (FIRST ST/GENEVA RD.)  
SECTION: 17 RS-4  
HORNE STREET TO 3RD STREET  
RESURFACING (3P)**

**KANE COUNTY  
C-91-063-09**

R. 8 E./R. 9 E



**PROJECT ENDS  
STA. 114 + 42**

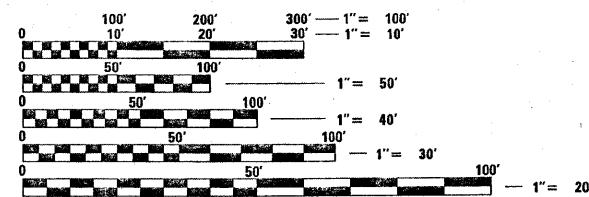
**PROJECT BEGINS  
STA. 11 + 60**

GENEVA & ST. CHARLES TWP

GROSS & LENGTH OF PROJECT = 10,282 LIN. FT. = 1.95 MILES

FOR INDEX OF SHEETS, SEE SHEET NO. 2

THE PROJECT IS LOCATED  
IN THE CITIES OF ST. CHARLES AND GENEVA



FULL SIZE PLANS HAVE BEEN PREPARED USING STANDARD ENGINEERING SCALES. REDUCED SIZED PLANS WILL NOT CONFORM TO STANDARD SCALES. IN MAKING MEASUREMENTS ON REDUCED PLANS, THE ABOVE SCALES MAY BE USED.

J.U.L.I.E.  
JOINT UTILITY LOCATION INFORMATION FOR EXCAVATION  
1-800-892-0123  
OR 811

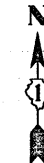
PROJECT ENGINEER - DAN WILGREEN (847) 705-4240  
PROJECT MANAGER - KEN ENG (847) 705-4247

CONTRACT NO. 60F32

D-91-063-09



LOCATION OF SECTION INDICATED THIS: - [Symbol]



TRAFFIC DATA  
2007 ADT = 9,900  
SPEED LIMIT = 35 MPH

STATE OF ILLINOIS  
DEPARTMENT OF TRANSPORTATION  
DIVISION OF HIGHWAYS

SUBMITTED MARCH 30, 20 09

Diana M. O'Hara DE  
DEPUTY DIRECTOR OF HIGHWAYS, REGION ENGINEER

May 1, 20 09

Charles E. Ingersoll /D  
ENGINEER OF DESIGN AND ENVIRONMENT

May 1, 20 09

Christine M. Reed /D  
DIRECTOR OF HIGHWAYS, CHIEF ENGINEER

**PRINTED BY THE AUTHORITY  
OF THE STATE OF ILLINOIS**