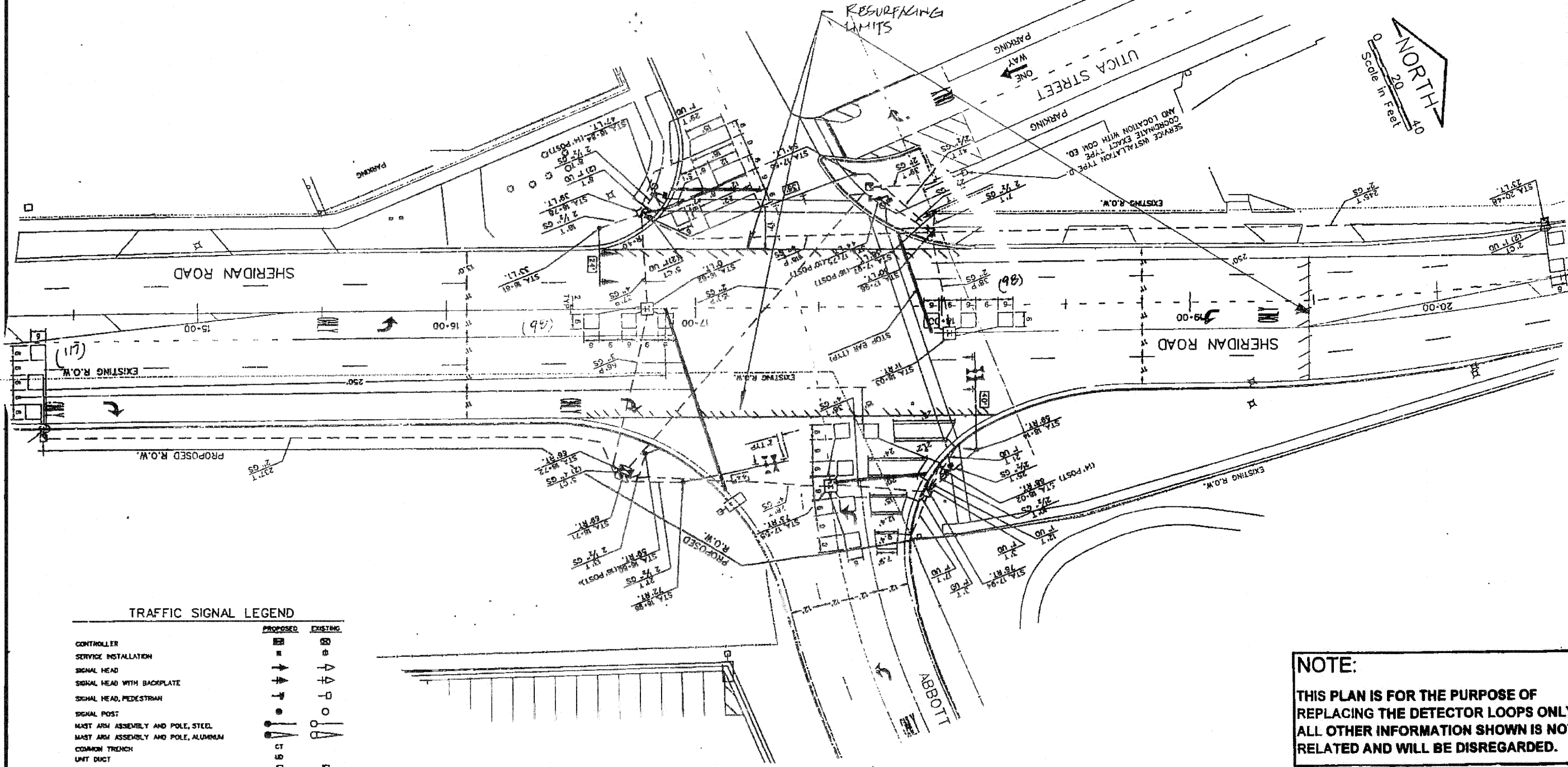


P.L. NO.	SECTION	COUNTY	SIGNAL SHEETS	SHEET NO.
352	113 R(2&4) RS	LAKE	13	24
STA		TO STA		
FED. ROAD DIST NO 1		MILEAGE	FED AID PROJECT	

CONTRACT NO. 60F43



TRAFFIC SIGNAL LEGEND

	PROPOSED	EXISTING
CONTROLLER	□	□
SERVICE INSTALLATION	□	□
SIGNAL HEAD	▲	▲
SIGNAL HEAD WITH BACKPLATE	▲	▲
SIGNAL HEAD, PEDESTRIAN	▲	▲
SIGNAL POST	○	○
MAST ARM ASSEMBLY AND POLE, STEEL	○	○
MAST ARM ASSEMBLY AND POLE, ALUMINUM	○	○
COMMON TRENCH	—	—
UNIT DUCT	—	—
HANDHOLE	□	□
HEAVY DUTY HANDHOLE	□	□
DOUBLE HANDHOLE	□	□
O.S. CONDUIT IN TRENCH OR PUSHED	—	—
PEDESTRIAN PUSHBUTTON DETECTOR	○	○
DETECTOR LOOP	□	□

REPLACE ALL DETECTOR LOOPS AS SHOWN

(WITHIN THE RESURFACING LIMITS)

CODE NO.	QUANTITY	UNIT	ITEM
80600600	313	Foot	Detector Loop Replacement

REVISIONS

NAME	DATE

NOTE:
THIS PLAN IS FOR THE PURPOSE OF REPLACING THE DETECTOR LOOPS ONLY. ALL OTHER INFORMATION SHOWN IS NOT RELATED AND WILL BE DISREGARDED.

ILLINOIS DEPARTMENT OF TRANSPORTATION
DETECTOR LOOP REPLACEMENT
ILL. 137 (SHERIDAN) @ 10TH STREET
SCALE: NONE
DATE: NOV. 1008
DRAWN BY: JHE
DESIGNED BY: JHE
CHECKED BY: DAD