

STATE OF ILLINOIS
DEPARTMENT OF TRANSPORTATION
DIVISION OF HIGHWAYS

**PROPOSED
HIGHWAY PLANS**

F.A.P. 332 (IL-1)
SECTION 8 Y-RS-4
PASADENA AVENUE TO KANKAKEE COUNTY LINE
RESURFACING (3P)

WILL COUNTY
C-91-397-09

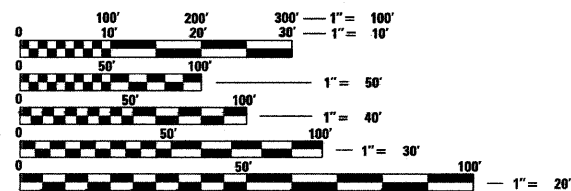
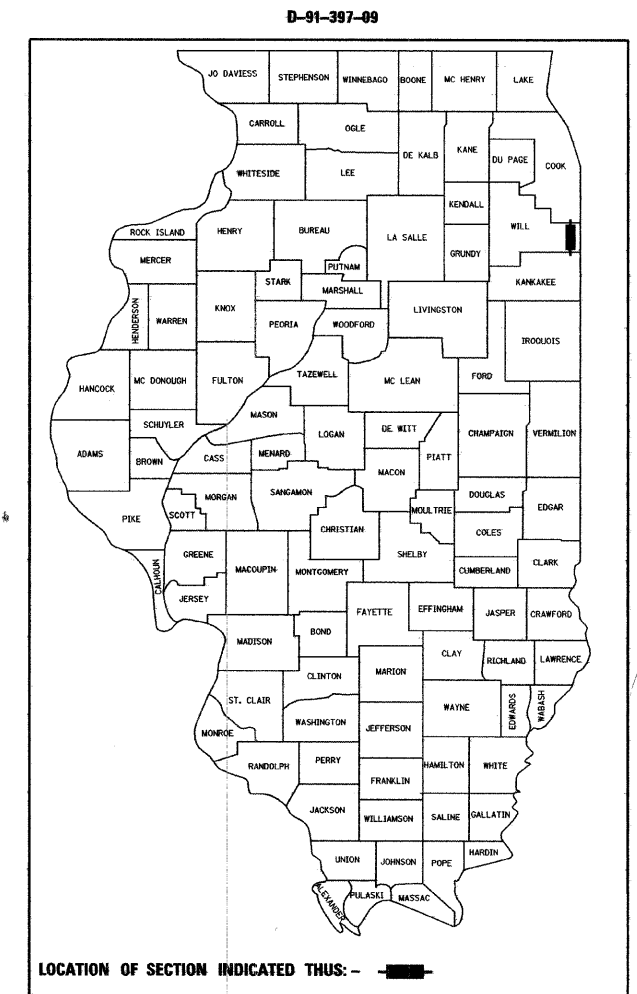
F.A.P. RTE.	SECTION	COUNTY	TOTAL SHEETS	SHEET NO.
332	8 Y-RS-4	WILL	16	1
FED. ROAD DIST. NO. 1	ILLINOIS	CONTRACT NO. 60G35		

FOR INDEX OF SHEETS, SEE SHEET NO. 2

THESE IMPROVEMENTS ARE LOCATED
WITHIN THE VILLAGE OF BEECHER

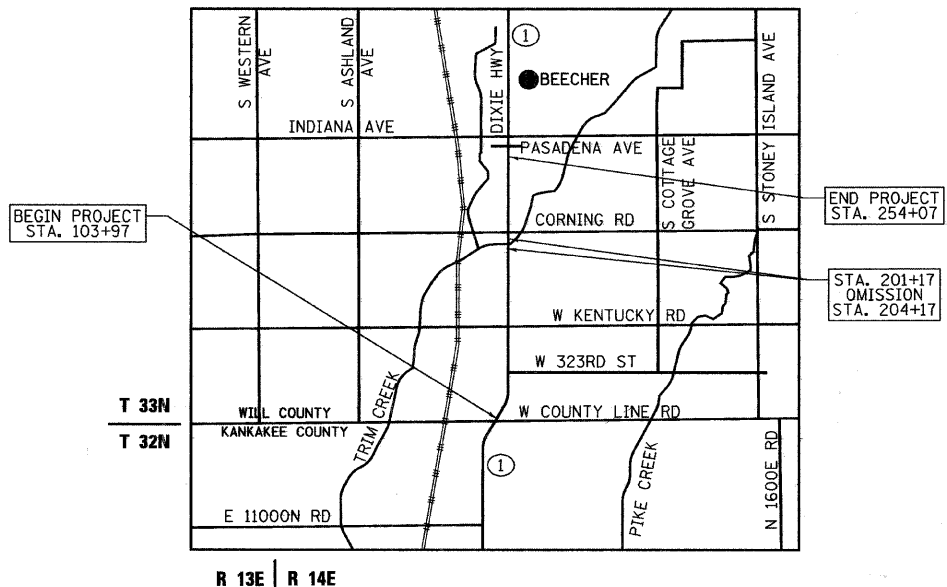
TRAFFIC DATA

2005 ADT - 5,800
POSTED SPEED LIMIT - 55 MPH



FULL SIZE PLANS HAVE BEEN PREPARED USING STANDARD ENGINEERING SCALES. REDUCED SIZED PLANS WILL NOT CONFORM TO STANDARD SCALES. IN MAKING MEASUREMENTS ON REDUCED PLANS, THE ABOVE SCALES MAY BE USED.

J.U.L.I.E.
JOINT UTILITY LOCATION INFORMATION FOR EXCAVATION
1-800-892-0123
OR 811



DATE: 3/24/2009
SEAL EXPIRES: 11/30/2009

STATE OF ILLINOIS
DEPARTMENT OF TRANSPORTATION
DIVISION OF HIGHWAYS

SUBMITTED MARCH 24, 2009

Diane M. O'Keefe *gc*
DEPUTY DIRECTOR OF HIGHWAYS, REGION ENGINEER

May 1, 2009
Charles G. Ingersoll
ENGINEER OF DESIGN AND ENVIRONMENT

May 1, 2009
Christine M. Reed
DIRECTOR OF HIGHWAYS, CHIEF ENGINEER

**PRINTED BY THE AUTHORITY
OF THE STATE OF ILLINOIS**

DISTRICT 1 DESIGN PLAN PREPARATION ENGINEER: K. ENG (847)705-4247

Ciorba Group, Inc.

DESIGN FIRM
REGISTRATION NUMBER
184-001016

CONSULTING ENGINEERS
SUITE 402, 5507 NORTH CUMBERLAND AVE
CHICAGO, ILLINOIS 60656 ☎ (773) 775-4009

CONTRACT NO. 60G35