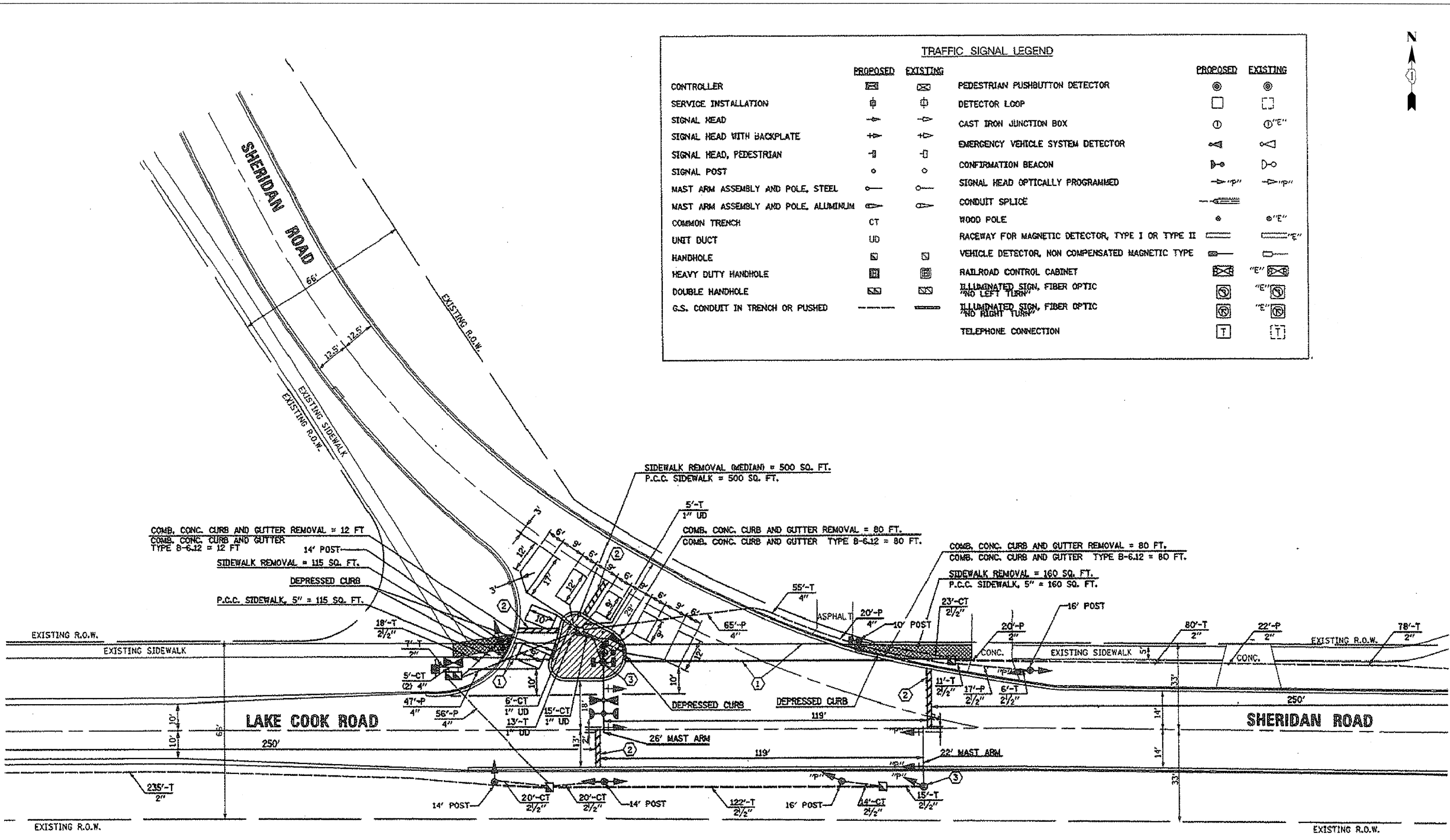




TRAFFIC SIGNAL LEGEND			
	PROPOSED	EXISTING	
CONTROLLER			PEDESTRIAN PUSHBUTTON DETECTOR
SERVICE INSTALLATION			DETECTOR LOOP
SIGNAL HEAD			CAST IRON JUNCTION BOX
SIGNAL HEAD WITH BACKPLATE			EMERGENCY VEHICLE SYSTEM DETECTOR
SIGNAL HEAD, PEDESTRIAN			CONFIRMATION BEACON
SIGNAL POST			SIGNAL HEAD OPTICALLY PROGRAMMED
MAST ARM ASSEMBLY AND POLE, STEEL			CONDUIT SPLICE
MAST ARM ASSEMBLY AND POLE, ALUMINUM			WOOD POLE
COMMON TRENCH			RACEWAY FOR MAGNETIC DETECTOR, TYPE I OR TYPE II
UNIT DUCT			VEHICLE DETECTOR, NON COMPENSATED MAGNETIC TYPE
HANDHOLE			RAILROAD CONTROL CABINET
HEAVY DUTY HANDHOLE			ILLUMINATED SIGN, FIBER OPTIC "NO LEFT TURN"
DOUBLE HANDHOLE			ILLUMINATED SIGN, FIBER OPTIC "NO RIGHT TURN"
G.S. CONDUIT IN TRENCH OR PUSHED			TELEPHONE CONNECTION



REPLACE ALL DETECTOR LOOPS AS SHOWN  
(WITHIN PROJECT LIMITS)

CODE NO.	QUANTITY	UNIT	ITEM
86600600	310	FOOT	DETECTOR LOOP REPLACEMENT

FILE NAME: c:\p\proj\33683\33683\_12\design\Signal\33083\_12\_LakeCook.dwg

**Ciorba Group, Inc.**  
CONSULTING ENGINEERS  
6507 North Cumberland Avenue, Suite 402  
Chicago, Illinois 60656  
Tel. 773.775.4009 Fax 773.775.4014

USER NAME = alaw	DESIGNED AL	REVISED -
PLOT SCALE = 1/8" = 1' IN.	DRAWN RJR	REVISED -
PLOT DATE = 4/8/2009	CHECKED WBL	REVISED -
	DATE 3/20/2009	REVISED -

**STATE OF ILLINOIS  
DEPARTMENT OF TRANSPORTATION**

**WALKER AVENUE /SHERIDAN ROAD  
LAKEVIEW AVE TO CENTRAL AVE & MULBERRY PL TO LAKE-COOK ROAD  
DETECTOR LOOP REPLACEMENT PLAN**

F.A.U. RTE. 1251/2784	SECTION 2009-042 RS	COUNTY LAKE	TOTAL SHEET NO. 26
SCALE: N.T.S. SHEET NO. 15 OF 26 SHEETS STA. TO STA.			CONTRACT NO. 60G49
FED. ROAD DIST. NO. 1 ILLINOIS FED. AID PROJECT			