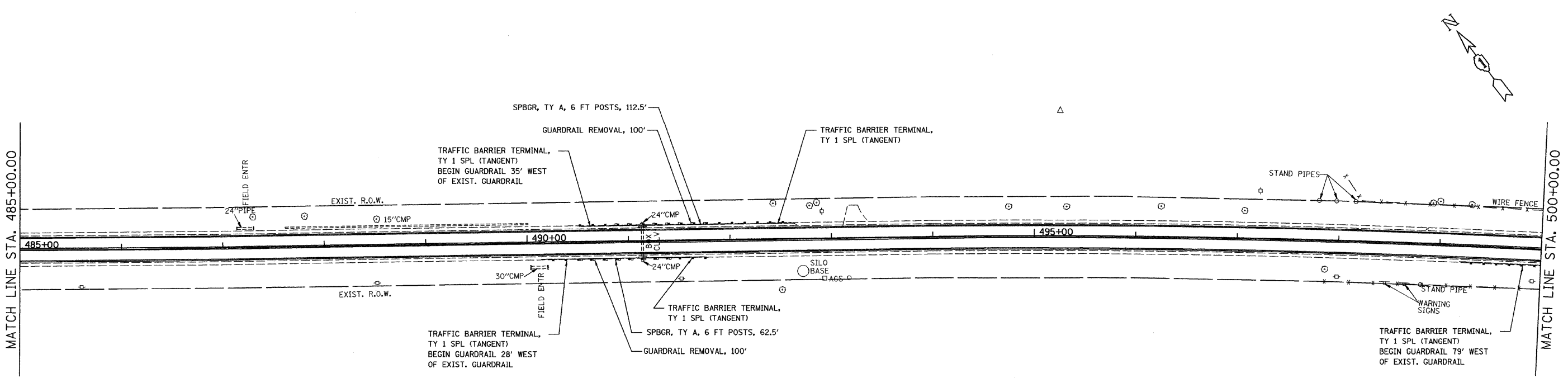


NOTE:
 PERMANENT PAVEMENT MARKING SHALL BE THERMOPLASTIC (OF TEH EXTRUDED TYPE) AND SHOULD BE PLACED IN ACCORDANCE WITH "DISTRICT ONE TYPICAL PAVEMENT MARKING DETAILS"
 RAISED REFLECTIVE PAVEMENT MARKERS SHALL BE IN ACCORDANCE WITH THE DISTRICT ONE "TYPICAL APPLICATION RAISED REFLECTIVE PAVEMENT MARKERS DETAILS"



NOTE:
 PERMANENT PAVEMENT MARKING SHALL BE THERMOPLASTIC (OF TEH EXTRUDED TYPE) AND SHOULD BE PLACED IN ACCORDANCE WITH "DISTRICT ONE TYPICAL PAVEMENT MARKING DETAILS"
 RAISED REFLECTIVE PAVEMENT MARKERS SHALL BE IN ACCORDANCE WITH THE DISTRICT ONE "TYPICAL APPLICATION RAISED REFLECTIVE PAVEMENT MARKERS DETAILS"

FILE NAME = ...VP1ans\p1n60710pp&mrk4.dgn	USER NAME = mcoleman	DESIGNED - TJJ	REVISED -	STATE OF ILLINOIS DEPARTMENT OF TRANSPORTATION	ROADWAY & PAVEMENT MARKING PLANS US 20 - MCHENRY /KANE CO LINE (GETTY ROAD) TO ILL 47		F.A. RTE.	SECTION	COUNTY	TOTAL SHEETS	SHEET NO.
	PLOT SCALE = 1" = 50'	CHECKED - JJT	REVISED -		345	10 RS-9	KANE	28	8		
	PLOT DATE = 4/17/2009	DATE - 04/16/09	REVISED -		SCALE: 1" = 50' SHEET NO. 8 OF 28 SHEETS STA. 470+00.00 TO STA. 500+00.00			CONTRACT NO. 60G62			
								FED. ROAD DIST. NO. ILLINOIS FED. AID PROJECT			