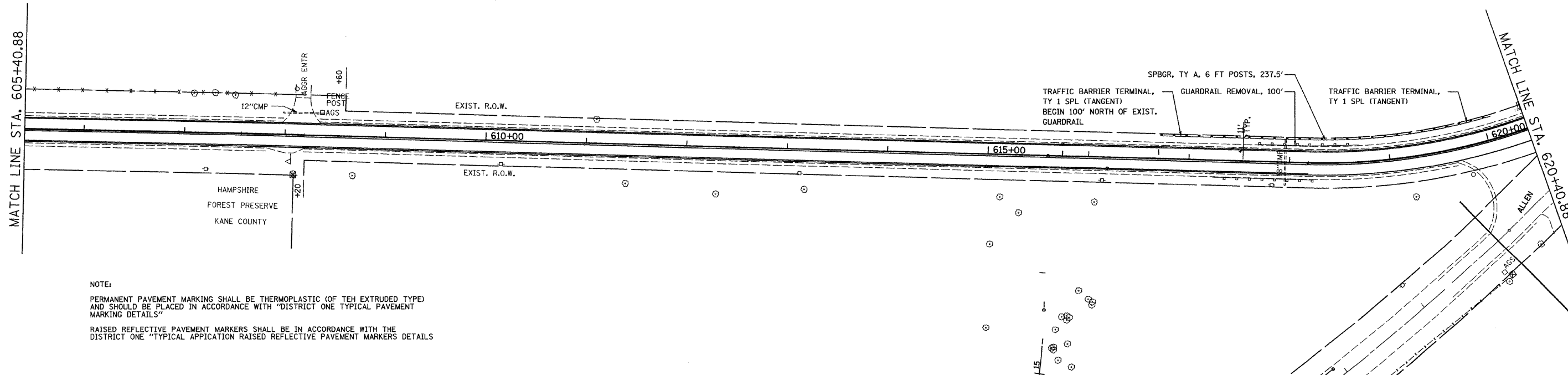
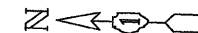


NOTE:  
 PERMANENT PAVEMENT MARKING SHALL BE THERMOPLASTIC (OF TEH EXTRUDED TYPE) AND SHOULD BE PLACED IN ACCORDANCE WITH "DISTRICT ONE TYPICAL PAVEMENT MARKING DETAILS"  
 RAISED REFLECTIVE PAVEMENT MARKERS SHALL BE IN ACCORDANCE WITH THE DISTRICT ONE "TYPICAL APPLICATION RAISED REFLECTIVE PAVEMENT MARKERS DETAILS"



NOTE:  
 PERMANENT PAVEMENT MARKING SHALL BE THERMOPLASTIC (OF TEH EXTRUDED TYPE) AND SHOULD BE PLACED IN ACCORDANCE WITH "DISTRICT ONE TYPICAL PAVEMENT MARKING DETAILS"  
 RAISED REFLECTIVE PAVEMENT MARKERS SHALL BE IN ACCORDANCE WITH THE DISTRICT ONE "TYPICAL APPLICATION RAISED REFLECTIVE PAVEMENT MARKERS DETAILS"

FILE NAME = ... \P1ans\p1n60710pp&mr-k8.dgn	USER NAME = mooleman	DESIGNED - TJJ	REVISED -	<b>STATE OF ILLINOIS DEPARTMENT OF TRANSPORTATION</b>	<b>ROADWAY &amp; PAVEMENT MARKING PLANS US 20 - MCHENRY /KANE CO LINE (GETTY ROAD) TO ILL 47</b>		F.A. RTE. 345	SECTION 10 RS-9	COUNTY KANE	TOTAL SHEETS 28	SHEET NO. 12	
PLOT SCALE = 1" = 50'	CHECKED - JJT	DATE - 04/16/09	REVISED -		SCALE: 1" = 50'	SHEET NO. 12 OF 28 SHEETS	STA. 590+40.88 TO STA. 620+40.88	CONTRACT NO. 60662				
PLOT DATE = 4/17/2009	DATE - 04/16/09	REVISED -	REVISED -		FED. ROAD DIST. NO. ILLINOIS FED. AID PROJECT							