

| | | | | |
|---------------------|----------|--------------------|--------------|-----------|
| F.A.P. RTE. | SECTION | COUNTY | TOTAL SHEETS | SHEET NO. |
| 573 | 61 S-3 | KANE | 15 | 1 |
| FED. ROAD DIST. NO. | ILLINOIS | CONTRACT NO. 60G74 | | |

D-91-530-09

PROJECT LOCATED ADJACENT TO THE CITY OF SUGAR GROVE, AND THE CITY OF AURORA

STATE OF ILLINOIS
DEPARTMENT OF TRANSPORTATION
DIVISION OF HIGHWAYS

**PROPOSED
HIGHWAY PLANS**

FAP ROUTE 573 (ILL ROUTE 56)
US ROUTE 30 TO NORRIS ROAD

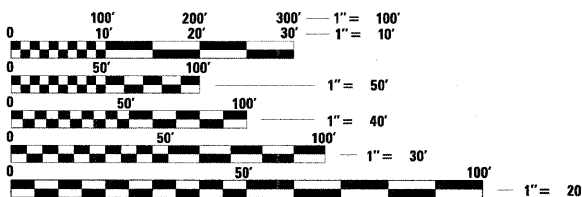
SECTION: 61RS-3
RESURFACING (3P)

KANE COUNTY
C-91-530-09

FOR INDEX OF SHEETS, SEE SHEET NO. 2

ADT 19,800 (2007)
SPEED LIMIT 55 MPH

OMMISSIONS
STA. 103+00 TO STA. 105+50
STA. 201+60 TO STA. 202+40

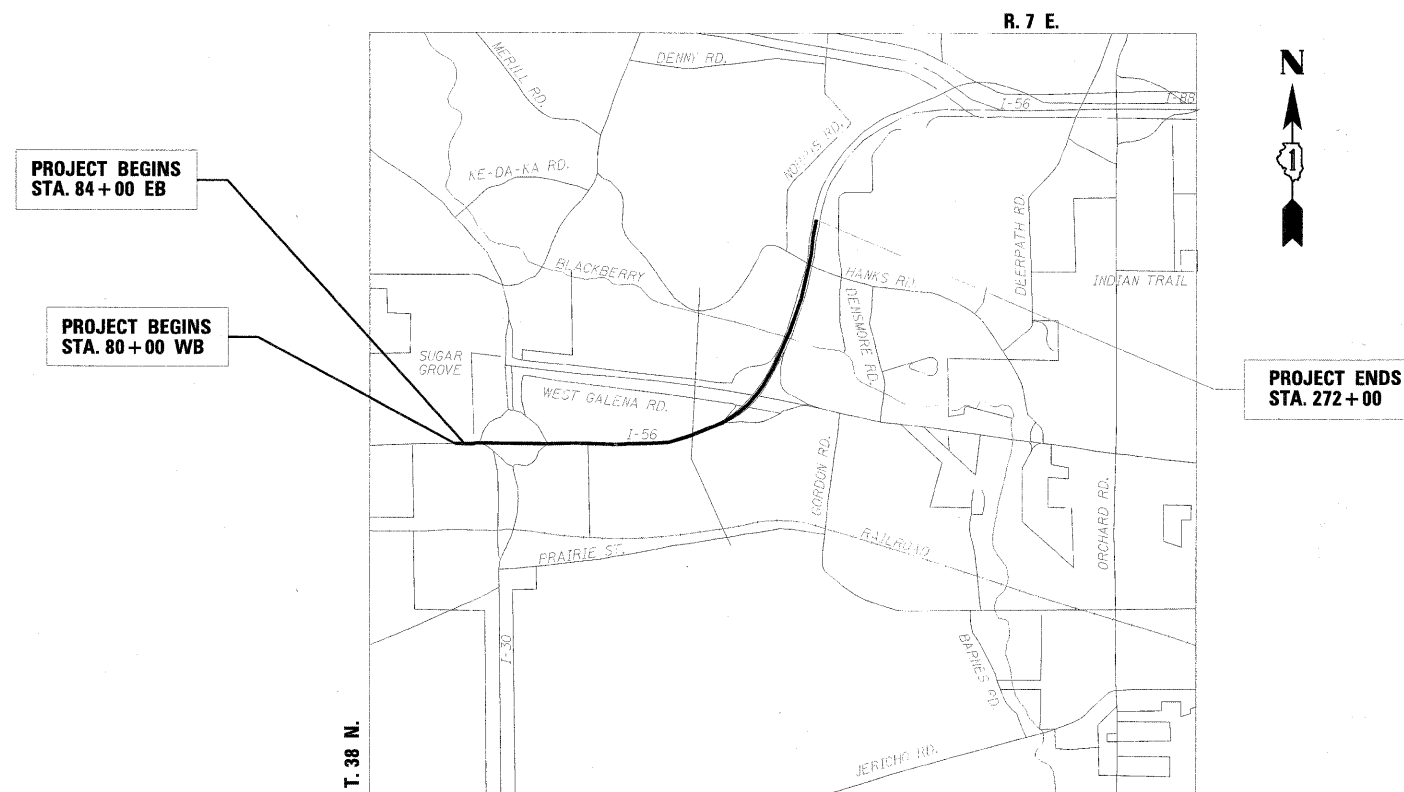


FULL SIZE PLANS HAVE BEEN PREPARED USING STANDARD ENGINEERING SCALES. REDUCED SIZED PLANS WILL NOT CONFORM TO STANDARD SCALES. IN MAKING MEASUREMENTS ON REDUCED PLANS, THE ABOVE SCALES MAY BE USED.

J.U.L.I.E.
JOINT UTILITY LOCATION INFORMATION FOR EXCAVATION
1-800-892-0123
OR 811

PROJECT MANAGER: RAJENDRA C. SHAH (847) 705-4555
PROJECT ENGINEER: ERSKINE W. KLYCE (847) 705-4594

CONTRACT NO. 60G74



LOCATION SKETCH

GROSS LENGTH OF PROJECT = 19,200' = 3.636 MI
NET LENGTH OF PROJECT = 18,870' = 3.574 MI

STATE OF ILLINOIS
DEPARTMENT OF TRANSPORTATION
DIVISION OF HIGHWAYS

SUBMITTED APRIL 21, 2009

Diane M. O'Keefe
DEPUTY DIRECTOR OF HIGHWAYS, REGION ENGINEER
May 1, 2009

Charles G. Ingersoll
ENGINEER OF DESIGN AND ENVIRONMENT
May 1, 2009

Christine M. Reed
DIRECTOR OF HIGHWAYS, CHIEF ENGINEER

PRINTED BY THE AUTHORITY
OF THE STATE OF ILLINOIS

LOCO, INC.
CONSULTING ENGINEERS
1560 WALL ST, SUITE 222
NAPERVILLE, ILLINOIS 60563 PH: 630/577-9100

WILLIAM H. EPP
REGISTERED PROFESSIONAL ENGINEER
ILLINOIS
W. H. Epp
Expires 11-20-09