

F.A.P. RTE.	SECTION	COUNTY	TOTAL SHEETS	SHEET NO.
541	(X-R & T-13-A) RS-1	LAKE	29	1
FED. ROAD DIST. NO. 1		ILLINOIS	CONTRACT NO. 60G78	

STATE OF ILLINOIS
DEPARTMENT OF TRANSPORTATION
DIVISION OF HIGHWAYS

PROPOSED
HIGHWAY PLANS

FAP 541 / IL. RTE. 132 (GRAND AVENUE)
SECTION: (X-R & T-13-A) RS-1
U.S. 45 TO I-94 RAMP (IL. RTE. 132 (EB) TO I-94 (SB))
RESURFACING (3P)

LAKE COUNTY
C-91-534-09

FOR INDEX OF SHEETS, SEE SHEET NO. 2

DESIGN DESIGNATION:
SPEED LIMIT : 40 M.P.H. TO 50 M.P.H.
2007 ADT = 43,000

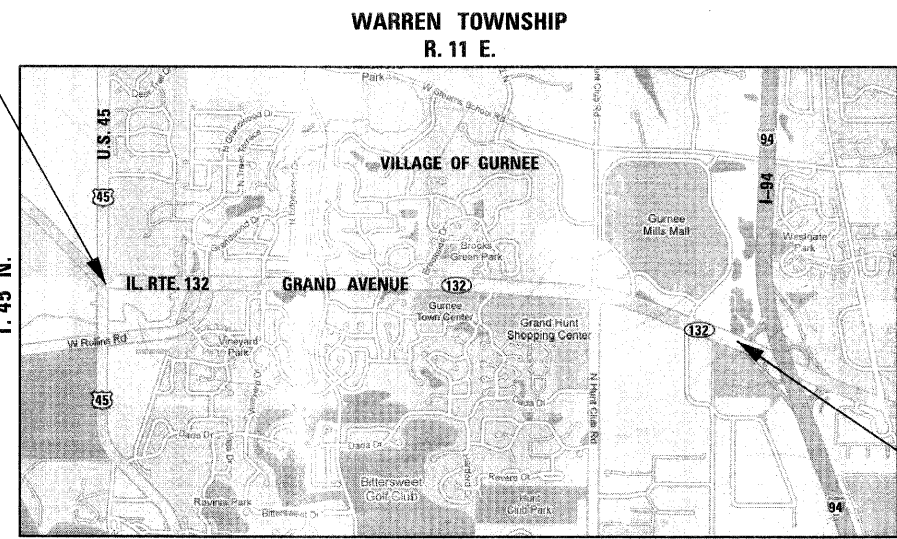
PROJECT LOCATED IN THE VILLAGE OF GURNEE

D-91-534-09



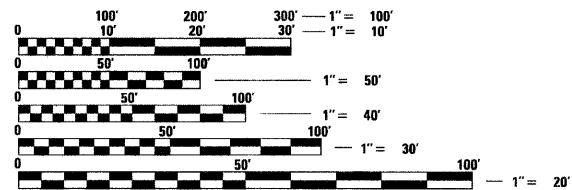
LOCATION OF SECTION INDICATED THIS: - [Symbol] -

PROJECT BEGINS STA. 8 + 00



PROJECT ENDS STA. 151 + 86

GROSS LENGTH OF PROJECT = 14,386 FEET = 2.725 MILES
NET LENGTH OF PROJECT = 14,386 FEET = 2.725 MILES



FULL SIZE PLANS HAVE BEEN PREPARED USING STANDARD ENGINEERING SCALES. REDUCED SIZED PLANS WILL NOT CONFORM TO STANDARD SCALES. IN MAKING MEASUREMENTS ON REDUCED PLANS, THE ABOVE SCALES MAY BE USED.

J.U.L.I.E.
 JOINT UTILITY LOCATING INFORMATION FOR EXCAVATORS
 1-800-892-0123
 OR 811

DISTRICT ONE - PLAN PREP ENGINEER:
KEN ENG (847) 705-4247

CONTRACT NO. 60G78

STATE OF ILLINOIS
 DEPARTMENT OF TRANSPORTATION
 DIVISION OF HIGHWAYS

SUBMITTED April 14, 2009

Diana M. O'Keefe
 DEPUTY DIRECTOR OF HIGHWAYS, REGION ONE ENGINEER

May 1, 2009
Charles G. Ingersoll
 ENGINEER OF DESIGN AND ENVIRONMENT

May 1, 2009
Christine M. Reed
 DIRECTOR OF HIGHWAYS, CHIEF ENGINEER



Birinder S. Sachdeva April 10, 2009
 BIRINDER S. SACHDEVA, P.E. DATE
 EXPIRES: 11-30-2009

CR & A
 CHRISTIAN-ROGE & ASSOCIATES, INC.
 ENGINEERS - PLANNERS - SURVEYORS
 211 W. WACKER DRIVE CHICAGO, IL. 60606
 TELEPHONE: 312-372-2023

PRINTED BY THE AUTHORITY OF THE STATE OF ILLINOIS