

OR RTE.	SECTION	COUNTY	TOTAL SHEETS	SHEET NO.
2626	2009-050 RS	COOK	16	1
		ILLINOIS	CONTRACT NO. 60H05	

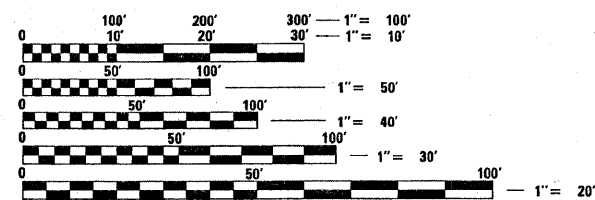
STATE OF ILLINOIS
DEPARTMENT OF TRANSPORTATION
DIVISION OF HIGHWAYS

**PROPOSED
HIGHWAY PLANS**

OR ROUTE 2626: OLD ARLINGTON HEIGHTS ROAD
ILL 68 (DUNDEE ROAD) TO ARLINGTON HEIGHTS ROAD
SECTION: 2009-050 RS
RESURFACING
COOK COUNTY
C-91-561-09

FOR INDEX OF SHEETS, SEE SHEET NO. 2

THE IMPROVEMENT IS LOCATED IN
THE VILLAGE OF ARLINGTON HEIGHTS

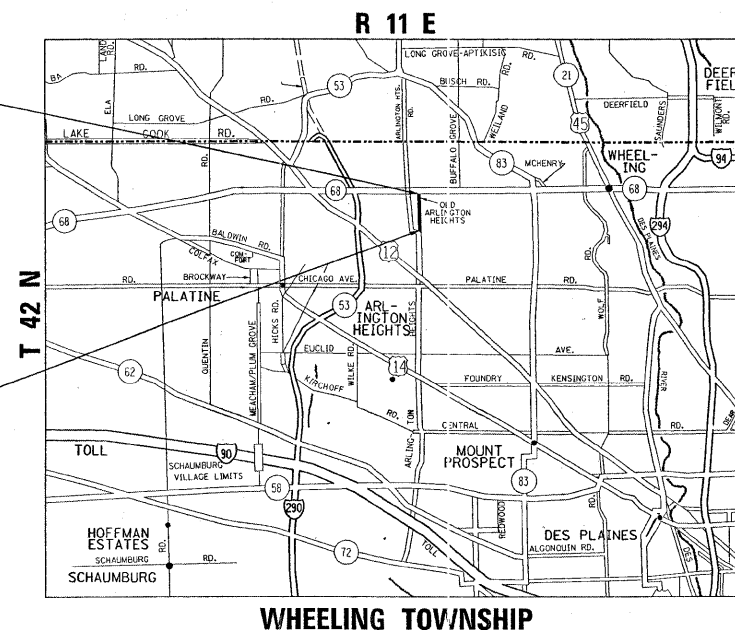


FULL SIZE PLANS HAVE BEEN PREPARED USING STANDARD ENGINEERING SCALES. REDUCED SIZED PLANS WILL NOT CONFORM TO STANDARD SCALES. IN MAKING MEASUREMENTS ON REDUCED PLANS, THE ABOVE SCALES MAY BE USED.

J.U.L.I.E.
JOINT UTILITY LOCATION INFORMATION FOR EXCAVATION
1-800-892-0123
OR 811

IMPROVEMENT ENDS
STA. 39 + 70

IMPROVEMENT BEGINS
STA. 17 + 67



GROSS AND NET LENGTH OF IMPROVEMENT = 2,203 FT. = 0.417 MILE



TRAFFIC DATA :
ADT=NOT COUNTED
POSTED SPEED LIMIT=40 MPH

PROJECT ENGINEER ROBERT BORO (847) 705-4178
PROJECT MANAGER KEN ENG

CONTRACT NO. 60H05

STATE OF ILLINOIS
DEPARTMENT OF TRANSPORTATION
DIVISION OF HIGHWAYS

SUBMITTED APRIL 21, 2009

Diana M. O'Keefe
DEPUTY DIRECTOR OF HIGHWAYS, REGION ENGINEER
May 1, 2009

Charles G. Dracinski
ENGINEER OF DESIGN AND ENVIRONMENT
May 1, 2009

Christine M. Reed
DIRECTOR OF HIGHWAYS, CHIEF ENGINEER

PRINTED BY THE AUTHORITY
OF THE STATE OF ILLINOIS