

F.A.U. RTE.	SECTION	COUNTY	TOTAL SHEETS	SHEET NO.
2865	2829 RS-4	COOK	18	1
FED. ROAD DIST. NO. 1	ILLINOIS	CONTRACT NO. 60H10		

**STATE OF ILLINOIS**  
**DEPARTMENT OF TRANSPORTATION**  
**DIVISION OF HIGHWAYS**

**PROPOSED**  
**HIGHWAY PLANS**

**F.A.U. 2865 (SHERIDAN ROAD)**  
**SECTION: 2829 RS-4**  
**ARTHUR AVENUE TO NORTH OF JUNEWAY TERRACE**  
**RESURFACING (3P)**

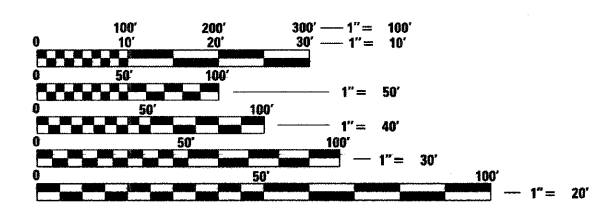
**COOK COUNTY**  
**C-91-566-09**

FOR INDEX OF SHEETS, SEE SHEET NO. 2

THESE IMPROVEMENTS ARE LOCATED  
 WITHIN THE CITY OF CHICAGO

**TRAFFIC DATA**

2006 ADT - 36,800  
 POSTED SPEED LIMIT - 30 MPH



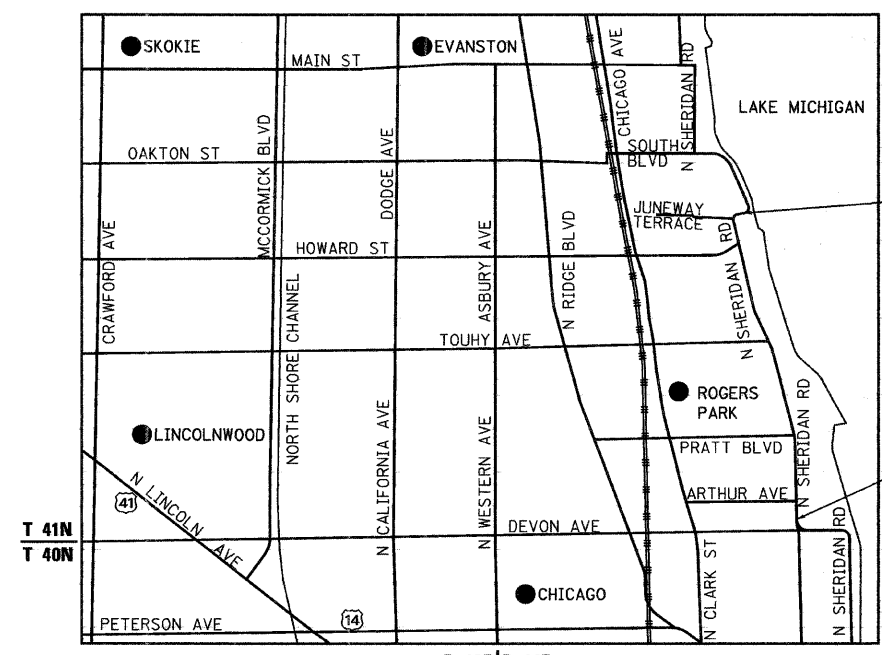
FULL SIZE PLANS HAVE BEEN PREPARED USING STANDARD ENGINEERING SCALES. REDUCED SIZED PLANS WILL NOT CONFORM TO STANDARD SCALES. IN MAKING MEASUREMENTS ON REDUCED PLANS, THE ABOVE SCALES MAY BE USED.

J.U.L.I.E.  
 JOINT UTILITY LOCATION INFORMATION FOR EXCAVATION  
 1-800-892-0123  
 OR 811

**Giorba Group, Inc.**

DESIGN FIRM  
 REGISTRATION NUMBER  
 184-001016

CONSULTING ENGINEERS  
 SUITE 402, 5507 NORTH CUMBERLAND AVE  
 CHICAGO, ILLINOIS 60656 ☎ (773) 775-4009



R 13E | R 14E  
 ROGERS PARK TOWNSHIP  
**LOCATION MAP**  
 1" = 2,500'  
 GROSS & NET LENGTH OF PROJECT = 8,922 FT = 1.69 MI.



DATE: 4/13/2009  
 SEAL EXPIRES: 11/30/2009



STATE OF ILLINOIS  
 DEPARTMENT OF TRANSPORTATION  
 DIVISION OF HIGHWAYS

SUBMITTED APRIL 14, 2009

*Debra M. O'Keefe*  
 DEPUTY DIRECTOR OF HIGHWAYS, REGION ENGINEER

May 1, 2009  
*Charles S. Ingersoll*  
 ENGINEER OF DESIGN AND ENVIRONMENT

May 1, 2009  
*Christine M. Reed*  
 DIRECTOR OF HIGHWAYS, CHIEF ENGINEER

**PRINTED BY THE AUTHORITY**  
**OF THE STATE OF ILLINOIS**

DISTRICT 1 DESIGN PLAN PREPARATION ENGINEER: K. ENG (847)705-4247

**CONTRACT NO. 60H10**