

STATE OF ILLINOIS  
DEPARTMENT OF TRANSPORTATION  
DIVISION OF HIGHWAYS

**PROPOSED  
HIGHWAY PLANS**

FAU ROUTE 1622 (183RD STREET)  
OAK PARK AVENUE TO IL ROUTE 50 (CICERO AVENUE)

SECTION: 3075 RS-1

RESURFACING (3P)

COOK COUNTY

C-91-575-09

O.R. RTE.	SECTION	COUNTY	TOTAL SHEETS	SHEET NO.
1622	3075 RS-1	COOK	33	1
FED. ROAD DIST. NO.	ILLINOIS	CONTRACT NO. 60H19		

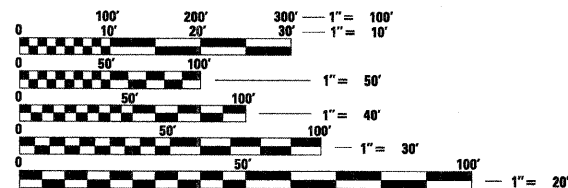
D-91-575-09

FOR INDEX OF SHEETS, SEE SHEET NO. 2

ADT 20000 (2009)  
SPEED LIMIT 50 MPH

**OMMISSIONS**

- STA. 45+38 TO STA. 53+70
- STA. 78+20 TO STA. 81+40
- STA. 131+80 TO STA. 134+34
- STA. 149+40 TO STA. 156+40

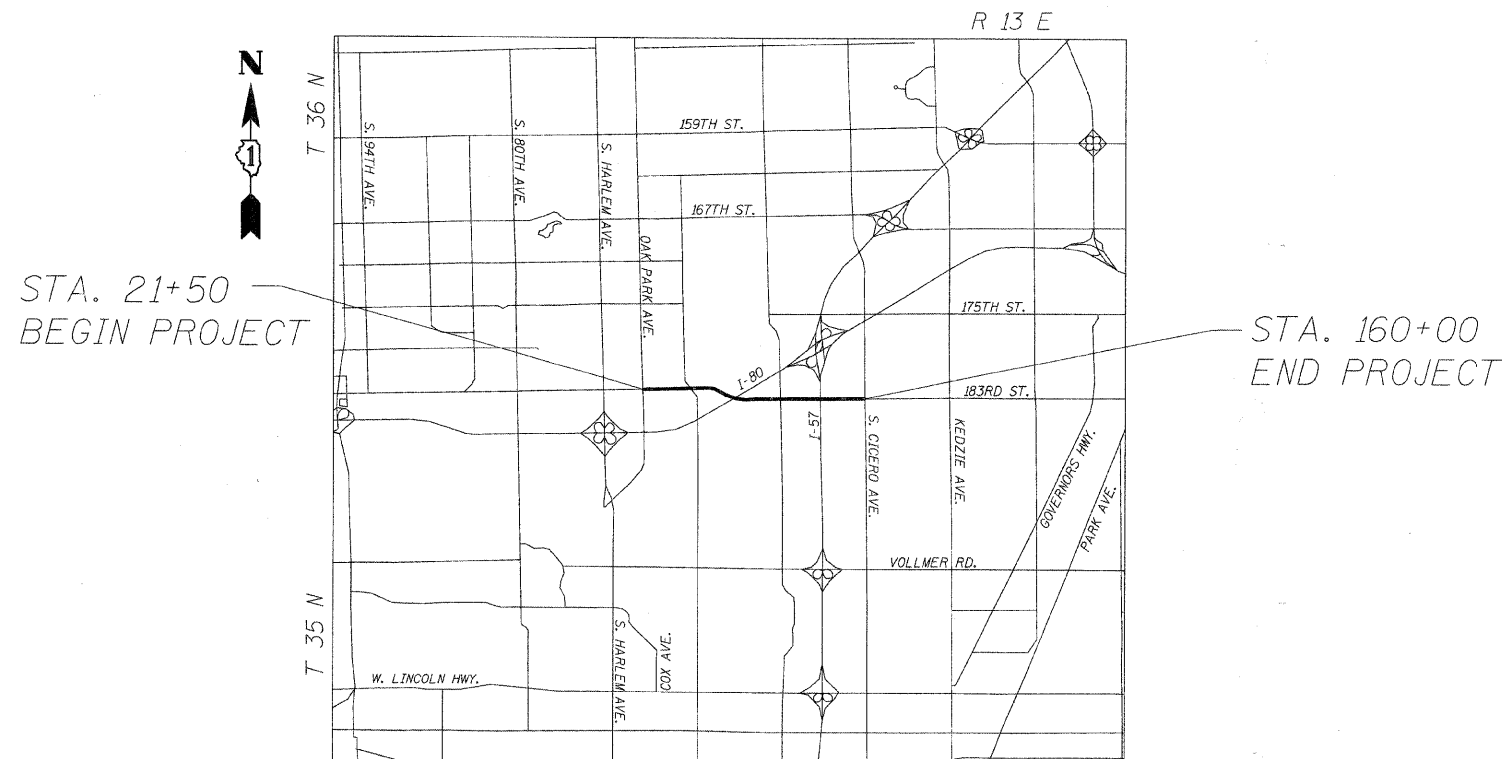


FULL SIZE PLANS HAVE BEEN PREPARED USING STANDARD ENGINEERING SCALES. REDUCED SIZED PLANS WILL NOT CONFORM TO STANDARD SCALES. IN MAKING MEASUREMENTS ON REDUCED PLANS, THE ABOVE SCALES MAY BE USED.

J.U.L.I.E.  
JOINT UTILITY LOCATION INFORMATION FOR EXCAVATION  
1-800-892-0123  
OR 811

PROJECT ENGINEER: REJENDRA C. SHAH (847) 705-4555  
PROJECT MANAGER: CATHERINE KIBBLE (847) 705-4269

CONTRACT NO. 60H19



**LOCATION SKETCH**

GROSS LENGTH OF PROJECT = 13,850' = 2.623 MI  
NET LENGTH OF PROJECT = 11,744' = 2.224 MI

STATE OF ILLINOIS  
DEPARTMENT OF TRANSPORTATION  
DIVISION OF HIGHWAYS

SUBMITTED April 15, 2009  
Diana M. O'Keefe DEPUTY DIRECTOR OF HIGHWAYS, REGION ENGINEER  
May 1, 2009  
Charles G. Ingersoll ENGINEER OF DESIGN AND ENVIRONMENT  
May 1, 2009  
Christine M. Reed DIRECTOR OF HIGHWAYS, CHIEF ENGINEER

**PRINTED BY THE AUTHORITY  
OF THE STATE OF ILLINOIS**

WILLIAM H. PETERSON  
CONSULTING ENGINEERS  
1560 WALL ST, SUITE 222  
NAPERVILLE, ILLINOIS 60563 PH: (630) 577-9100

WILLIAM H. PETERSON  
REGISTERED PROFESSIONAL ENGINEER  
WHP  
Expires 1/30/09