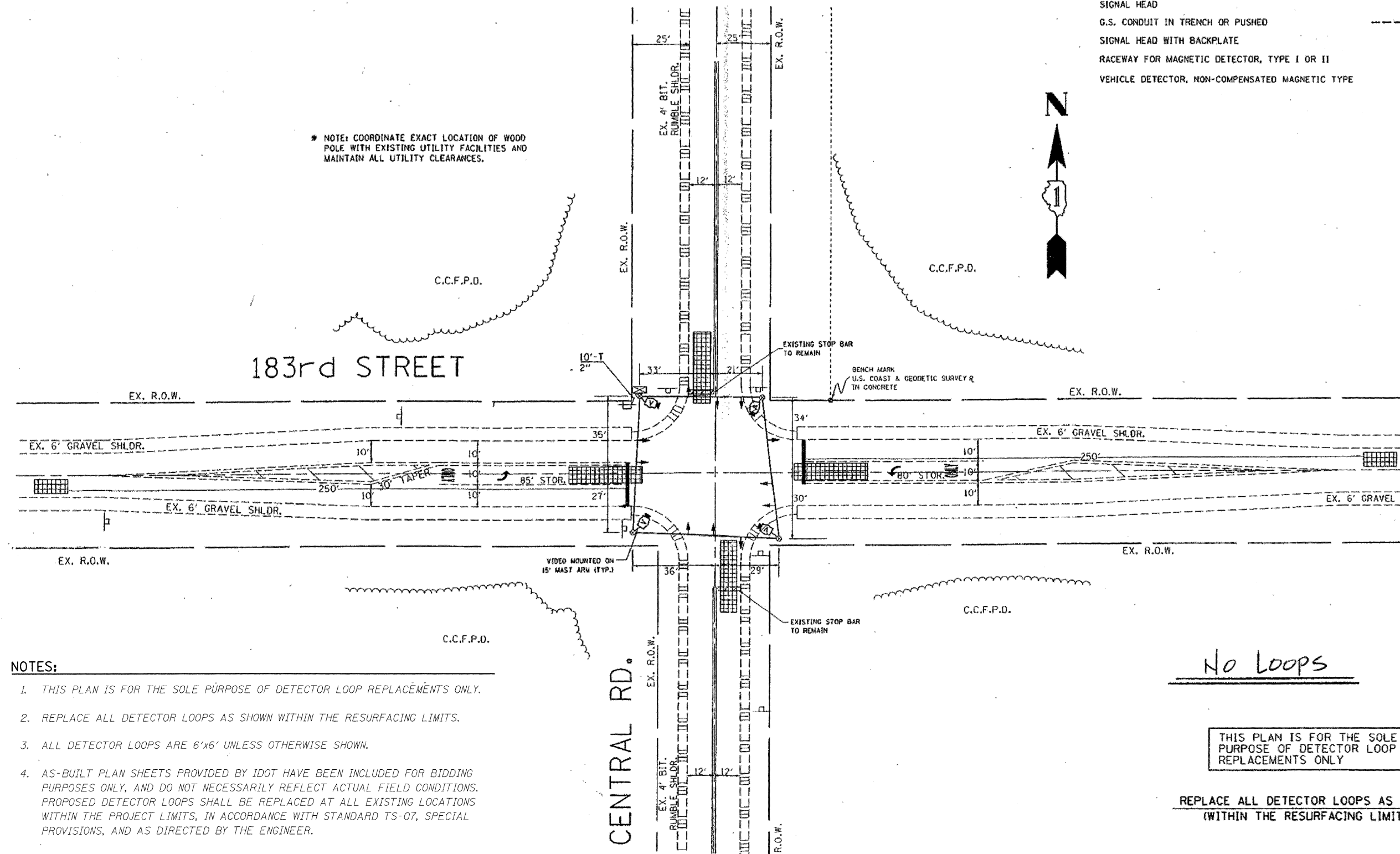


TRAFFIC SIGNAL LEGEND

	PROPOSED	EXISTING
DETECTOR LOOP		
SIGNAL HEAD		
G.S. CONDUIT IN TRENCH OR PUSHED		
SIGNAL HEAD WITH BACKPLATE		
RACEWAY FOR MAGNETIC DETECTOR, TYPE I OR II		
VEHICLE DETECTOR, NON-COMPENSATED MAGNETIC TYPE		

* NOTE: COORDINATE EXACT LOCATION OF WOOD POLE WITH EXISTING UTILITY FACILITIES AND MAINTAIN ALL UTILITY CLEARANCES.



NOTES:

1. THIS PLAN IS FOR THE SOLE PURPOSE OF DETECTOR LOOP REPLACEMENTS ONLY.
2. REPLACE ALL DETECTOR LOOPS AS SHOWN WITHIN THE RESURFACING LIMITS.
3. ALL DETECTOR LOOPS ARE 6'x6' UNLESS OTHERWISE SHOWN.
4. AS-BUILT PLAN SHEETS PROVIDED BY IDOT HAVE BEEN INCLUDED FOR BIDDING PURPOSES ONLY, AND DO NOT NECESSARILY REFLECT ACTUAL FIELD CONDITIONS. PROPOSED DETECTOR LOOPS SHALL BE REPLACED AT ALL EXISTING LOCATIONS WITHIN THE PROJECT LIMITS, IN ACCORDANCE WITH STANDARD TS-07, SPECIAL PROVISIONS, AND AS DIRECTED BY THE ENGINEER.

No Loops

THIS PLAN IS FOR THE SOLE PURPOSE OF DETECTOR LOOP REPLACEMENTS ONLY

REPLACE ALL DETECTOR LOOPS AS SHOWN (WITHIN THE RESURFACING LIMITS)

<p>CONSULTING ENGINEERS 1500 WALL STREET NAPERVILLE, ILLINOIS 60563 PH: (630) 577-9100</p>	USER NAME = #USER#	DESIGNED - MJY	REVISED -	<p align="center">STATE OF ILLINOIS DEPARTMENT OF TRANSPORTATION</p>	<p align="center">DETECTOR LOOP PLAN - CENTRAL ROAD INTERSECTION 183RD STREET</p>	OR RTE.	SECTION	COUNTY	TOTAL SHEETS	SHEET NO.
	PLOT SCALE = #SCALE#	DRAWN - ZDA & ST	REVISED -			1622	3075 RS-1	COOK	23	11
PLOT DATE = #DATE#	CHECKED - MJY	DATE - 04/15/2009	REVISED -	SCALE: 1" = 50'	SHEET NO. 11 OF 23 SHEETS	STA. 21+50 TO STA. 160+00	<p align="center">D-91-575-09 CONTRACT NO. 60H19</p>			
							<p align="center">FED. ROAD DIST. NO. ILLINOIS FED. AID PROJECT</p>			