

F.A.P. RTE.	SECTION	COUNTY	TOTAL SHEETS	SHEET NO.
029	2009-056 RS	COOK	18	1
FED. ROAD DIST. NO. 1	ILLINOIS	CONTRACT NO. 60H25		

STATE OF ILLINOIS  
DEPARTMENT OF TRANSPORTATION  
DIVISION OF HIGHWAYS

**PROPOSED  
HIGHWAY PLANS**

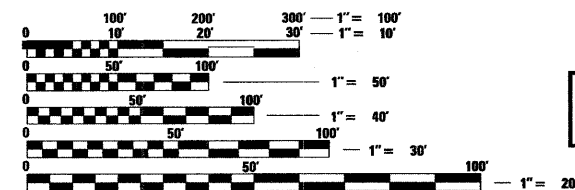
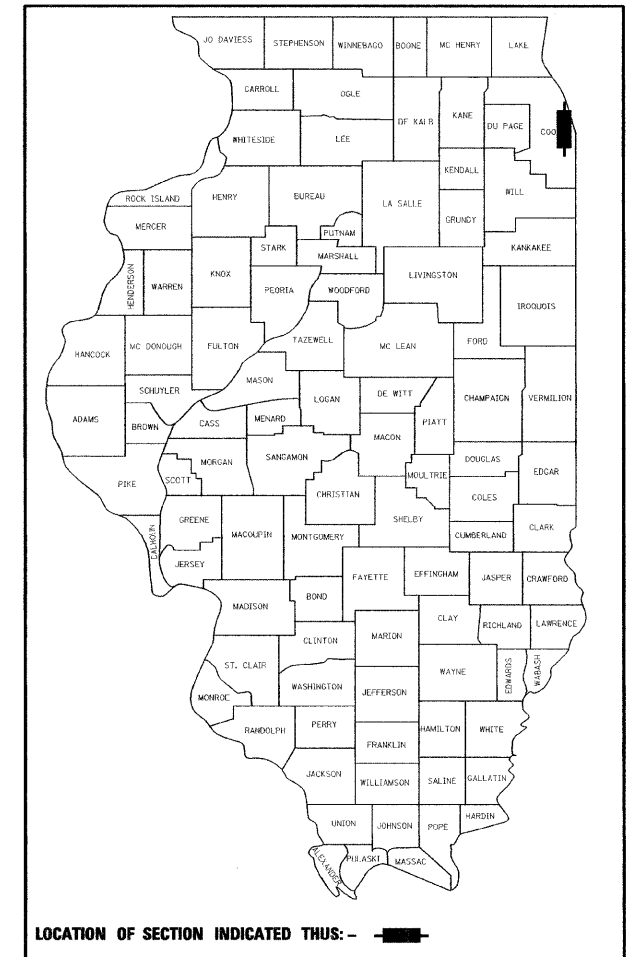
FAP ROUTE 029: U.S. 12/20/41 (EWING AVE)  
95TH STREET TO INDIANAPOLIS BOULEVARD  
SECTION 2009-056 RS  
RESURFACING (3P)  
COOK COUNTY  
C-91-595-09

FOR INDEX OF SHEETS, SEE SHEET NO. 2

IMPROVEMENT LOCATED  
IN THE CITY OF CHICAGO

2007 ADT = 20,100 VEHICLES PER DAY  
SPEED LIMIT = 30 MPH

D-91-595-09

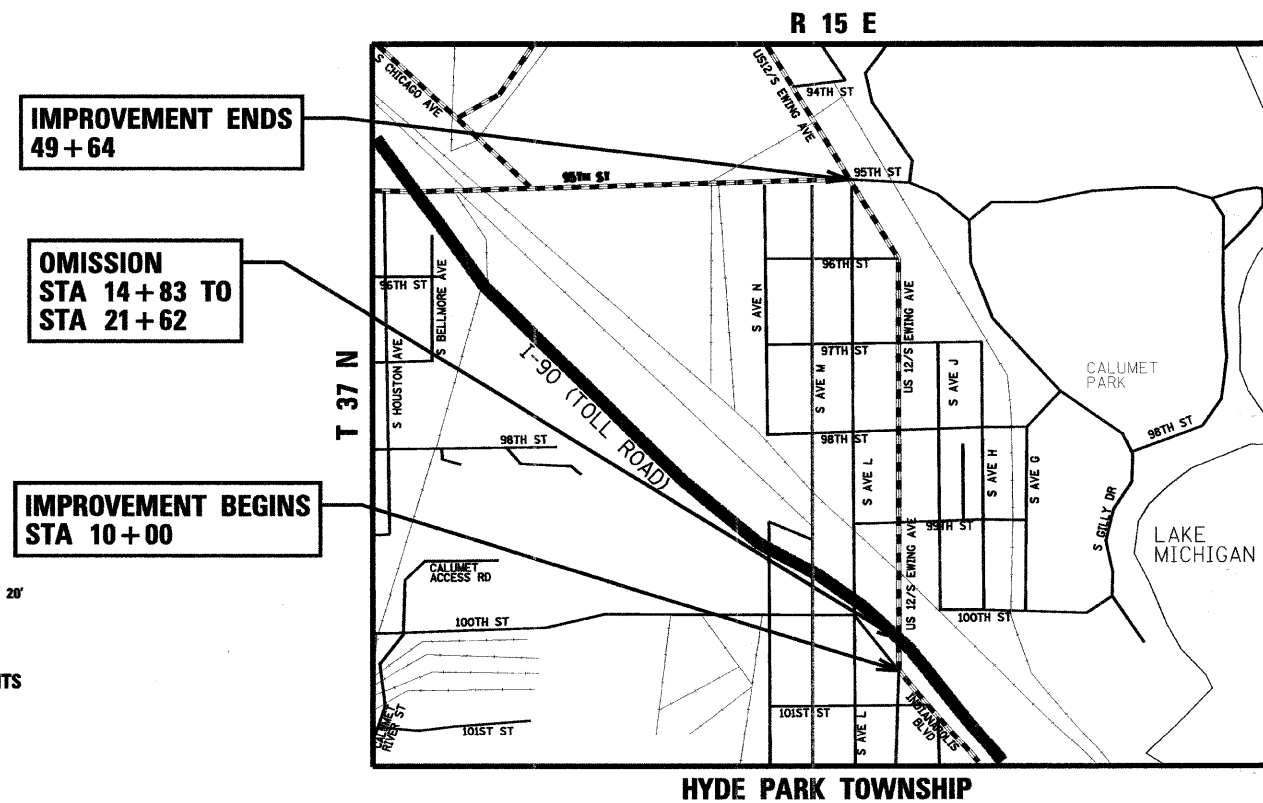


FULL SIZE PLANS HAVE BEEN PREPARED USING STANDARD ENGINEERING SCALES. REDUCED SIZED PLANS WILL NOT CONFORM TO STANDARD SCALES. IN MAKING MEASUREMENTS ON REDUCED PLANS, THE ABOVE SCALES MAY BE USED.

J.U.L.I.E.  
JOINT UTILITY LOCATION INFORMATION FOR EXCAVATION  
1-800-892-0123  
OR 811

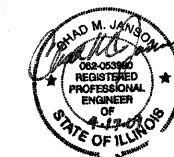
PROJECT ENGINEER: MICHELLE AQUINO (847) 705-4606  
PROJECT MANAGER: LONG TRAN (847) 705-4232

CONTRACT NO. 60H25



GROSS LENGTH OF PROJECT = 3964 FT. = 0.75 MILE  
NET LENGTH OF PROJECT = 3285 FT. = 0.62 MILE

**LOCATION MAP**  
NOT TO SCALE



STATE OF ILLINOIS  
DEPARTMENT OF TRANSPORTATION  
DIVISION OF HIGHWAYS

SUBMITTED APRIL 20, 2009

*Diana M. O'Keefe*  
DEPUTY DIRECTOR OF HIGHWAYS, REGION ENGINEER

May 1, 2009  
*Charles J. Ingersoll*  
ENGINEER OF DESIGN AND ENVIRONMENT

May 1, 2009  
*Christine M. Reed*  
DIRECTOR OF HIGHWAYS, CHIEF ENGINEER

**rjngroup**  
Excellence through Ownership  
200 West Front Street  
Wheaton, IL 60187

PRINTED BY THE AUTHORITY  
OF THE STATE OF ILLINOIS