

STATE OF ILLINOIS
DEPARTMENT OF TRANSPORTATION
DIVISION OF HIGHWAYS

**PROPOSED
HIGHWAY PLANS**

FAU ROUTE 2937: ILL 83 (TORRENCE AVE)
186TH STREET TO GLENWOOD-DYER ROAD

SECTION: 3077-RS

RESURFACING (3P)

COOK COUNTY

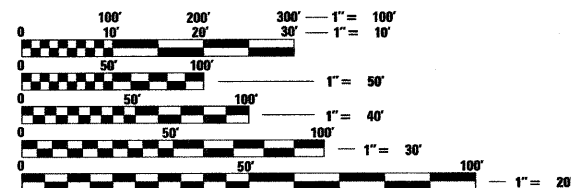
C-91-606-09

F.A.U. RTE.	SECTION	COUNTY	TOTAL SHEETS	SHEET NO.
2937	3077-RS	COOK	24	1
FED. ROAD DIST. NO. 1		ILLINOIS	CONTRACT NO. 60H36	

FOR INDEX OF SHEETS, SEE SHEET NO. 2

IMPROVEMENT LOCATED IN THE
VILLAGES OF LANSING AND LYNWOOD

2007 ADT = 13,900 VEHICLES PER DAY
SPEED LIMIT = 40 MPH

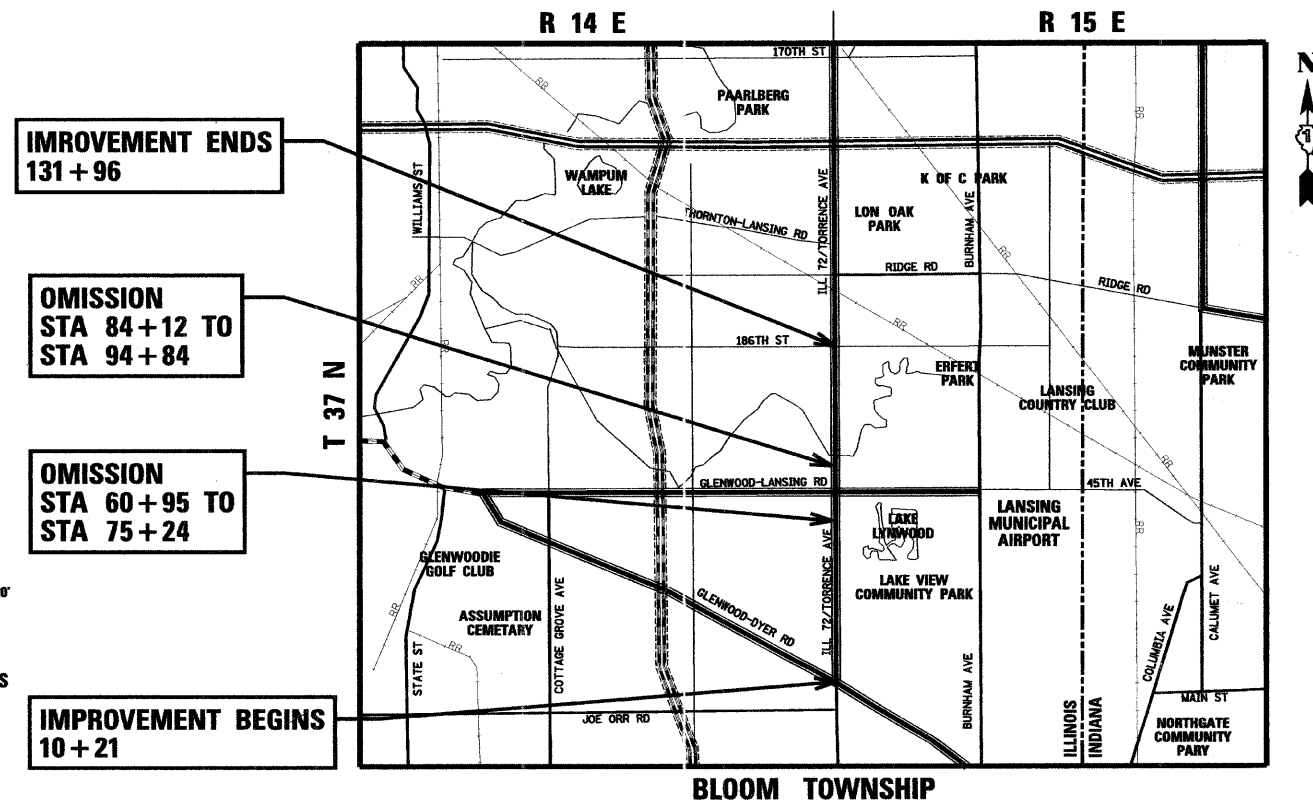


FULL SIZE PLANS HAVE BEEN PREPARED USING STANDARD
ENGINEERING SCALES. REDUCED SIZED PLANS WILL NOT
CONFORM TO STANDARD SCALES. IN MAKING MEASUREMENTS
ON REDUCED PLANS, THE ABOVE SCALES MAY BE USED.

J.U.L.I.E.
JOINT UTILITY LOCATION INFORMATION FOR EXCAVATION
1-800-892-0123
OR 811

PROJECT ENGINEER: MICHELLE AQUINO (847) 705-4606
PROJECT MANAGER: LONG TRAN (847) 705-4232

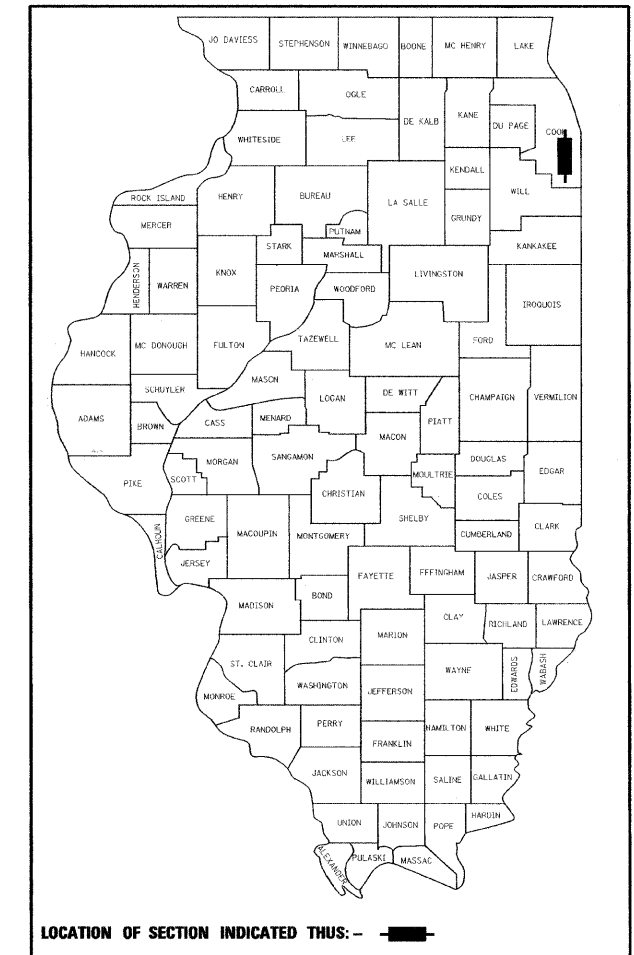
CONTRACT NO. 60H36



GROSS LENGTH OF PROJECT = 12175 FT. = 2.31 MILES
NET LENGTH OF PROJECT = 9674 FT. = 1.83 MILES

LOCATION MAP
NOT TO SCALE

D-91-606-09



LOCATION OF SECTION INDICATED THIS: -



STATE OF ILLINOIS
DEPARTMENT OF TRANSPORTATION
DIVISION OF HIGHWAYS

SUBMITTED APRIL 20, 2009

Diana M. O'Keefe DE
DEPUTY DIRECTOR OF HIGHWAYS, REGION ENGINEER

May 1, 2009
Charles J. Ingersoll EIT
ENGINEER OF DESIGN AND ENVIRONMENT

May 1, 2009
Christine M. Reed EIT
DIRECTOR OF HIGHWAYS, CHIEF ENGINEER

rjngroup
Excellence through Ownership
200 West Front Street
Wheaton, IL 60187

PRINTED BY THE AUTHORITY
OF THE STATE OF ILLINOIS

INDEX OF SHEETS

SHEET NO.	DESCRIPTION
1.	TITLE SHEET
2.	INDEX OF SHEETS, STATE STANDARDS, GENERAL NOTES
3.	SUMMARY OF QUANTITIES
4.	EXISTING & PROPOSED TYPICAL SECTIONS
5 - 9.	ROADWAY AND PAVEMENT MARKING PLANS
10 - 12.	DETECTOR LOOP REPLACEMENT PLANS
13.	DETAILS FOR FRAMES AND LIDS ADJUSTMENT WITH MILLING
14.	PAVEMENT PATCHING FOR HMA SURFACED PAVEMENT
15.	CURB OR CURB AND GUTTER REMOVAL AND REPLACEMENT
16.	BUTT JOINT AND HMA TAPER DETAILS
17.	TRAFFIC CONTROL AND PROTECTION FOR SIDE ROADS, INTERSECTIONS AND DRIVEWAYS
18.	TYPICAL APPLICATIONS RAISED REFLECTIVE PAVEMENT MARKERS (SNOW-PLOW RESISTANT)
19.	DISTRICT ONE - TYPICAL PAVEMENT MARKINGS
20.	TRAFFIC CONTROL AND PROTECTION AT TURN BAYS (TO REMAIN OPEN TO TRAFFIC)
21.	PAVEMENT MARKING LETTERS AND SYMBOLS FOR TRAFFIC STAGING
22.	ARTERIAL ROAD / INFORMATION SIGN
23.	DRIVEWAY ENTRANCE SIGNING
24.	DISTRICT 1 DETECTOR LOOP INSTALLATION DETAILS FOR ROADWAY RESURFACING

STATE STANDARDS

STANDARD NO.	DESCRIPTION
000001-05	SYMBOLS, ABRIEVIATIONS AND PATTERNS
442201-03	CLASS C AND D PATCHES
482011-03	HMA SHLD. STRIPS/SHLDS. WITH RESURFACING OR WIDENING AND RESURFACING PROJECTS
701201-03	LANE CLOSURE, 2L, 2W, DAY ONLY, FOR SPEEDS \geq 45 MPH
701301-03	LANE CLOSURE, 2L, 2W, SHORT TIME OPERATIONS
701306-02	LANE CLOSURE, 2L, 2W, SLOW MOVING OPERATIONS DAY ONLY, FOR SPEEDS \geq 45 MPH
701311-03	LANE CLOSURE, 2L, 2W, MOVING OPERATIONS - DAY ONLY
701501-05	URBAN LANE CLOSURE, 2L, 2W, UNDIVIDED
701701-06	URBAN LANE CLOSURE, MULTILANE INTERSECTION
701901-01	TRAFFIC CONTROL DEVICES

GENERAL NOTES

- BEFORE STARTING ANY EXCAVATION, THE CONTRACTOR SHALL CALL J.U.L.I.E. AT (800) 892-0123 OR 811 FOR FIELD LOCATIONS OF BURIED ELECTRIC, TELEPHONE AND GAS UTILITIES. 48 HOUR NOTIFICATION IS REQUIRED.
- ALL PAVEMENT MARKING SHALL BE PLACED THROUGHOUT THE PROJECT ACCORDING TO DISTRICT 1 TYPICAL PAVEMENT MARKING.
- ALL HMA PATCHING SHALL BE CLASS D.
- THE CONTRACTOR WILL NOT BE ALLOWED TO SET UP A YARD OR FIELD OFFICE ON STATE PROPERTY WITHOUT WRITTEN PERMISSION FROM THE DEPARTMENT.
- ANY PAVEMENT MARKINGS AND RAISED REFLECTIVE PAVEMENT MARKERS OBLITERATED BY MILLING AND RESURFACING OPERATIONS ON SIDE STREETS AND ENTRANCES SHALL BE REPLACED AND PAID FOR IN KIND.
- ALL DAMAGE TO EXISTING PAVEMENT MARKINGS OR RAISED REFLECTIVE PAVEMENT MARKERS OUTSIDE THE REMOVAL LINE SHOWN ON THE PLANS SHALL BE REPLACED AT NO ADDITIONAL COST TO THE DEPARTMENT.
- BEFORE BEGINNING ANY WORK, THE CONTRACTOR SHALL RETAIN AND RECORD FOR FUTURE REFERENCE, ALL EXISTING PAVEMENT MARKING LINES IN ORDER THAT THESE LOCATIONS CAN BE RE-ESTABLISHED FOR STRIPING. EXACT LOCATIONS OF ALL PAVEMENT MARKINGS SHALL BE AS DIRECTED BY THE ENGINEER.
- ALL PAVEMENT PATCHING LOCATIONS WILL BE DETERMINED IN THE FIELD BY THE ENGINEER.
- DRAINAGE ADJUSTMENT OR RECONSTRUCTION LOCATIONS WILL BE DETERMINED IN THE FIELD BY THE ENGINEER.
- FRAMES AND GRATES ADJUSTMENT OF PRIVATE UTILITIES WITHIN THE LIMITS OF THE IMPROVEMENTS SHALL BE DONE BY THEIR RESPECTIVE OWNERS AND ARE NOT PART OF THIS CONTRACT.
- THE RESIDENT ENGINEER SHALL CONTACT THE DISTRICT ONE TRAFFIC CONTROL SUPERVISOR AT (847)705-4151 A MINIMUM OF 72 HOURS PRIOR TO THE PLACEMENT OF ANY TEMPORARY TRAFFIC CONTROL DEVICES.
- THE ENGINEER SHALL CONTACT MS. PATRICE HARRIS, TRAFFIC FIELD ENGINEER, AT (708) 897-9800 A MINIMUM OF TWO (2) WEEKS PRIOR TO THE START OF THIS PROJECT SO THAT EXACT STATIONING OF NO PASSING ZONES AND OTHER PERMANENT PAVEMENT MARKINGS MAY BE ESTABLISHED.
- THE CONTRACTOR SHALL BE REQUIRED TO PROVIDE ACCESS TO ABBUTTING PROPERTY AT ALL TIMES DURING THE CONSTRUCTION OF THIS PROJECT.
- EXISTING BROKEN FRAMES AND LIDS SHALL BE REMOVED AND DISPOSED OF BY THE CONTRACTOR AND SHALL BE REPLACED AS DIRECTED BY THE ENGINEER. REPLACEMENT FRAMES AND LIDS WILL BE PAID FOR IN ACCORDANCE WITH ARTICLE 109.04 OF THE STANDARD SPECIFICATIONS UNLESS A SEPARATE PAY ITEM HAS BEEN PROVIDED.
- DO NOT SCALE PLANS FOR CONSTRUCTION DIMENSIONS.
- DOUBLE LAND MARKERS ARE TO BE USED AS SHOWN ON THE DISTRICT ONE DETAIL FOR TYPICAL APPLICATION OF RAISED REFLECTIVE PAVEMENT MARKERS (SNOW-PLOW RESISTANT) SHOWN IN THE PLANS.
- WHEN ARTIFICIAL LIGHTING IS USED IN NIGHT OPERATIONS THE CONTRACTOR SHALL EXERCISE THE UTMOST PRECAUTIONS IN PREVENTING ADVERSE VISIBILITY TO THE MOTORING PUBLIC AND ADJOINING RESIDENTIAL AREAS.
- WHEN MILLED PAVEMENT IS OPEN TO TRAFFIC, THE MAXIMUM GRADE DIFFERENTIAL BETWEEN PASSES OF THE MILLING MACHINE SHALL NOT EXCEED 1 1/2 INCHES (40 MM) WHERE THE SPEED LIMIT IS 45 MPH (80 KM/H) OR LESS AND 1 INCH (25 MM) WHERE THE SPEED LIMIT IS GREATER THAN 45 MPH (80 KM/H). WITH WRITTEN APPROVAL FROM THE ENGINEER, A MAXIMUM GRADE DIFFERENTIAL OF 3 INCHES (75 MM) MAY BE ALLOWED IF THE EDGE OF THE MILLING IS SLOPED A MINIMUM 1:3 (V:H)
- BUTT JOINTS WILL BE INSTALLED AT THE ENDS OF ALL RESURFACING (WHERE RESURFACING MEETS EXISTING PAVEMENT), IN ACCORDANCE WITH DISTRICT ONE STANDARD BD-32.
- IT SHALL BE THE CONTRACTOR'S RESPONSIBILITY TO VERIFY ALL DIMENSIONS AND CONDITIONS EXISTING IN THE FIELD PRIOR TO CONSTRUCTION AND ORDERING OF MATERIALS.
- THE CONTRACTOR SHALL COORDINATE CONSTRUCTION ACTIVITIES WITH UTILITY COMPANIES.

SUMMARY OF QUANTITIES				
CODE NO.	ITEM DESCRIPTION	UNIT	URBAN	CONSTRUCTION
			100% STATE TOTAL QUANTITY	TYPE CODE I000
20201006	GRADING AND SHAPING SHOULDERS	UNIT	98	98
40600200	BITUMINOUS MATERIALS (PRIME COAT)	TON	21	21
40600300	AGGREGATE (PRIME COAT)	TON	103	103
40600400	MIXTURE FOR CRACKS, JOINTS, AND FLANGEWAYS	TON	324	324
40600895	CONSTRUCTING TEST STRIP	EACH	2	2
40600982	HOT-MIX ASPHALT SURFACE REMOVAL-BUTT JOINT	SQ YD	376	376
40601005	HOT-MIX ASPHALT REPLACEMENT OVER PATCHES	TON	570	570
40603340	HOT-MIX ASPHALT SURFACE COURSE, MIX "D", N70	TON	2,880	2,880
42001300	PROTECTIVE COAT	SQ YD	44	44
44000158	HOT-MIX ASPHALT SURFACE REMOVAL, 2 1/4"	SQ YD	34,254	34,254
44001700	COMBINATION CONCRETE CURB AND GUTTER REMOVAL AND REPLACEMENT	FOOT	200	200
44002216	HOT-MIX ASPHALT REMOVAL OVER PATCHES, 4"	SQ YD	2,532	2,532
44201761	CLASS D PATCHES, TYPE I, 10 INCH	SQ YD	100	100
44201765	CLASS D PATCHES, TYPE II, 10 INCH	SQ YD	683	683
44201769	CLASS D PATCHES, TYPE III, 10 INCH	SQ YD	200	200
44201771	CLASS D PATCHES, TYPE IV, 10 INCH	SQ YD	1,549	1,549
48102100	AGGREGATE WEDGE SHOULDER, TYPE B	TON	392	392
55039700	STORM SEWERS TO BE CLEANED	FOOT	500	500
60300105	FRAMES AND GRATES TO BE ADJUSTED	EACH	8	8
60300310	FRAMES AND LIDS TO BE ADJUSTED (SPECIAL)	EACH	37	37
67000400	ENGINEER'S FIELD OFFICE, TYPE A	CAL MO	6	6
67100100	MOBILIZATION	L SUM	1	1
70100450	TRAFFIC CONTROL AND PROTECTION, STANDARD 701201	L SUM	1	1
70100460	TRAFFIC CONTROL AND PROTECTION, STANDARD 701306	L SUM	1	1
70102620	TRAFFIC CONTROL AND PROTECTION, STANDARD 701501	L SUM	1	1
70102635	TRAFFIC CONTROL AND PROTECTION, STANDARD 701701	L SUM	1	1
70300100	SHORT-TERM PAVEMENT MARKING	FOOT	4,248	4,248
70300210	TEMPORARY PAVEMENT MARKING-LETTERS AND SYMBOLS	SQ FT	291	291
70300220	TEMPORARY PAVEMENT MARKING-LINE 4"	FOOT	20,878	20,878
70300240	TEMPORARY PAVEMENT MARKING-LINE 6"	FOOT	1,396	1,396
70300250	TEMPORARY PAVEMENT MARKING-LINE 8"	FOOT	249	249
70300260	TEMPORARY PAVEMENT MARKING-LINE 12"	FOOT	279	279
70300280	TEMPORARY PAVEMENT MARKING-LINE 24"	FOOT	261	261

* SPECIALTY ITEM

SUMMARY OF QUANTITIES				
CODE NO.	ITEM DESCRIPTION	UNIT	URBAN	CONSTRUCTION
			100% STATE TOTAL QUANTITY	TYPE CODE I000
70301000	WORK ZONE PAVEMENT MARKING REMOVAL	SQ FT	1,416	1,416
* 78000100	THERMOPLASTIC PAVEMENT MARKING-LETTERS AND SYMBOLS	SQ FT	292	292
* 78000200	THERMOPLASTIC PAVEMENT MARKING-LINE 4"	FOOT	20,878	20,878
* 78000400	THERMOPLASTIC PAVEMENT MARKING-LINE 6"	FOOT	1,396	1,396
* 78000500	THERMOPLASTIC PAVEMENT MARKING-LINE 8"	FOOT	249	249
* 78000600	THERMOPLASTIC PAVEMENT MARKING-LINE 12"	FOOT	279	279
* 78000650	THERMOPLASTIC PAVEMENT MARKING-LINE 24"	FOOT	261	261
* 78100100	RAISED REFLECTIVE PAVEMENT MARKER	EACH	338	338
78300200	RAISED REFLECTIVE PAVEMENT MARKER REMOVAL	EACH	300	300
* 88600600	DETECTOR LOOP REPLACEMENT	FOOT	658	658
X0322256	TEMPORARY INFORMATION SIGNING	SQ FT	52	52
X4067107	POLYMERIZED LEVELING BINDER (MACHINE METHOD), IL 4.75, N50	TON	1,440	1,440
Z0018500	DRAINAGE STRUCTURES TO BE CLEANED	EACH	20	20

* SPECIALTY ITEM



200 West Front Street
Wheaton, IL 60187

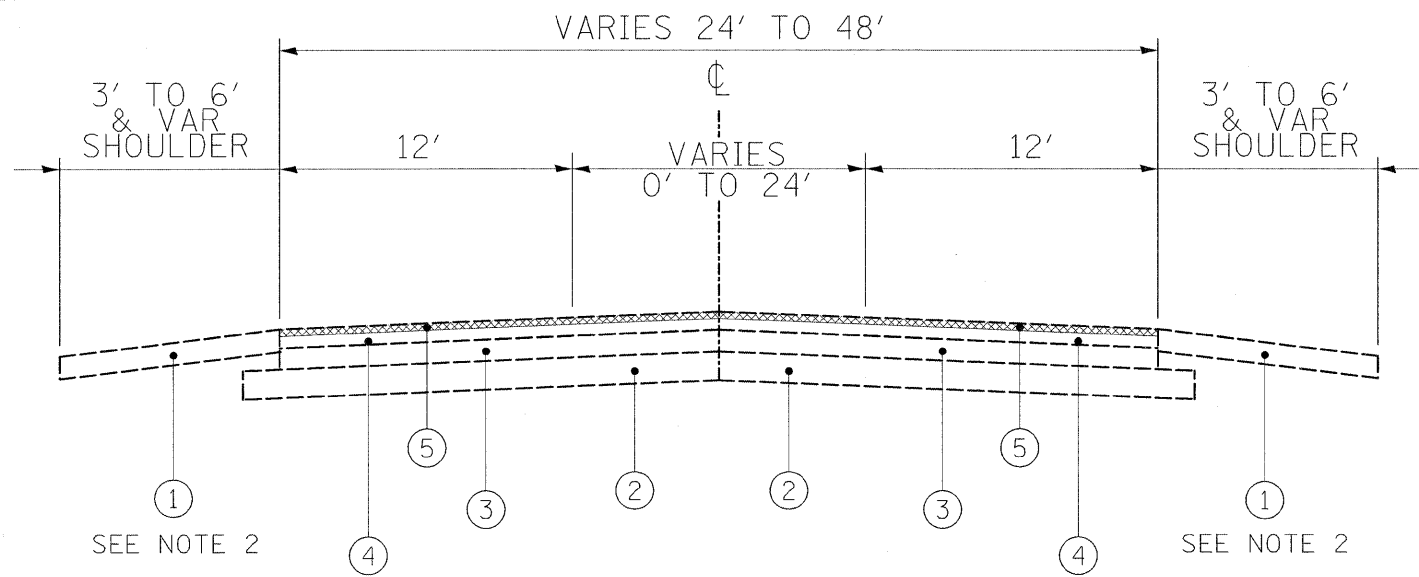
DESIGNED - KSD	REVISED -
DRAWN - KSD	REVISED -
CHECKED - CMJ	REVISED -
DATE -	REVISED -

STATE OF ILLINOIS
DEPARTMENT OF TRANSPORTATION

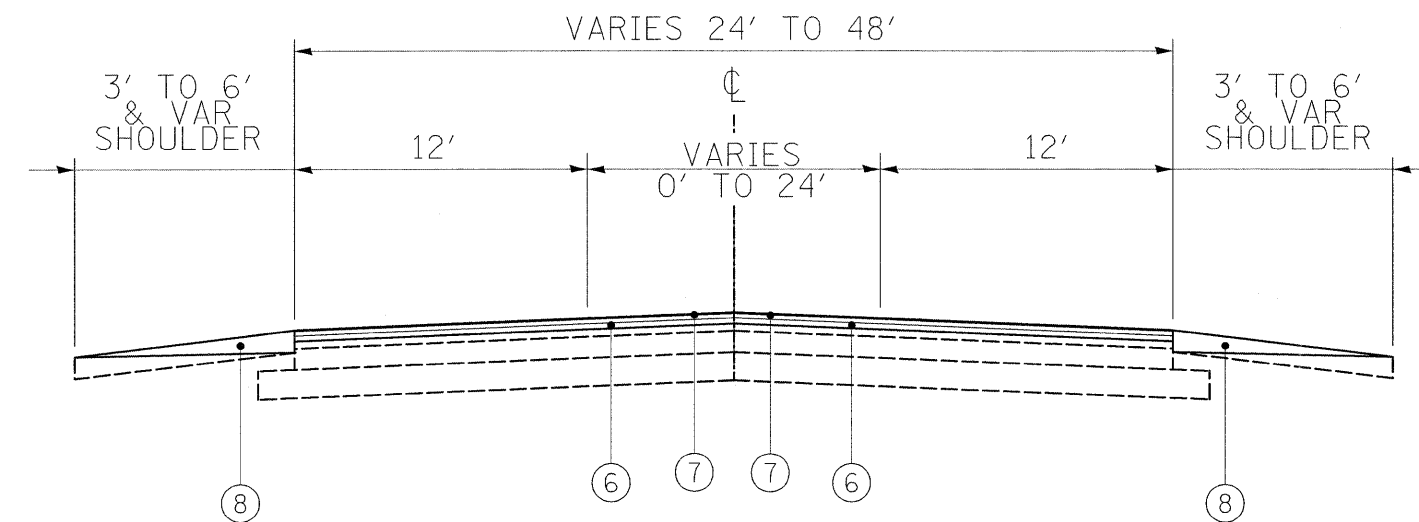
TORRENCE AVENUE
SUMMARY OF QUANTITIES

SCALE: NONE SHEET NO. 1 OF 1 SHEETS STA. TO STA.

F.A.U. RTE. 2937	SECTION 3077-RS	COUNTY COOK	TOTAL SHEETS 24	SHEET NO. 3
CONTRACT NO. 60H36				
FED. ROAD DIST. NO. 1 [ILLINOIS] FED. AID PROJECT				



EXISTING TYPICAL SECTION TORRENCE AVENUE



PROPOSED TYPICAL SECTION TORRENCE AVENUE

LEGEND

- ① EXISTING AGGREGATE SHOULDER
- ② EXISTING AGGREGATE BASE COURSE
- ③ EXISTING PCC PAVEMENT, ±10"
- ④ EXISTING HOT-MIX ASPHALT PAVEMENT, ±4" (BEFORE SURFACE REMOVAL)
- ⑤ HOT-MIX ASPHALT SURFACE REMOVAL, 2 1/4"
- ⑥ PROPOSED POLYMERIZED LEVELING BINDER (MACHINE METHOD), IL-4.75, N50, 3/4"
- ⑦ PROPOSED HOT-MIX ASPHALT SURFACE COURSE, "MIX D", N70, 1 1/2"
- ⑧ PROPOSED GRADING AND SHAPING SHOULDERS
PROPOSED AGGREGATE WEDGE SHOULDER, TYPE B

NOTES:

1. PAVEMENT CROSS SECTION IS 24' AT FOLLOWING LOCATIONS:
 STA. 18+71 TO STA. 28+64
 STA. 40+78 TO STA. 51+09
 STA. 94+84 TO STA. 119+92
2. CURB AND GUTTER IN LIEU OF AGGREGATE SHOULDER AT THE FOLLOWING LOCATIONS:
 STA. 75+24 (LT) TO STA. 84+12
 STA. 123+76 TO STA. 131+96

HOT-MIX ASPHALT MIXTURE

MIXTURE TYPE	AC TYPE	AIR VOIDS
HMA SURFACE COURSE, MIX "D", N70 (IL 9.5 mm)	PG 64-22	4% @ 70 Gyr.
POLYMERIZED LEVELING BINDER (MACHINE METHOD), IL-4.75, N50	SBS/SBR PG 76-28/-22	4% @ 50 Gyr.
HMA REPLACEMENT OVER PATCHES (HMA BINDER, IL-19 mm)	PG 64-22*	4% @ 70 Gyr.
CLASS D PATCH (HMA BINDER, IL-19mm)	PG 64-22*	4% @ 70 Gyr.

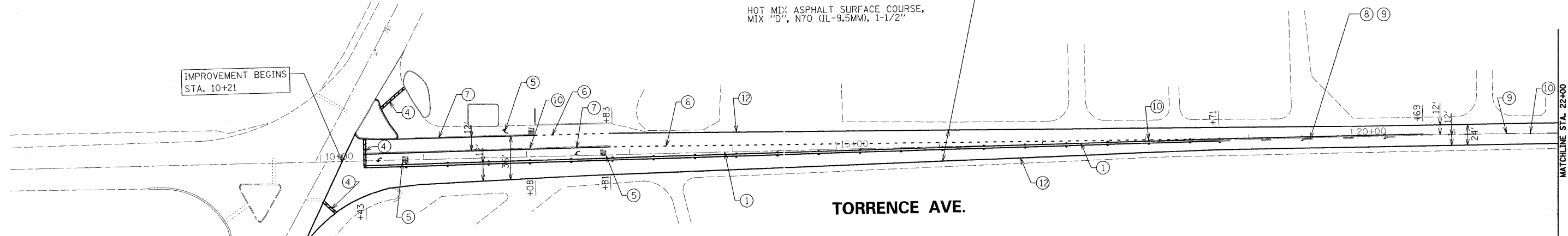
THE UNIT WEIGHT TO CALCULATE ALL HMA SURFACE MIXTURE QUANTITIES IS 112LBS/SY/IN
 *WHEN RAP EXCEEDS 20%, THE NEW ASPHALT BINDER IN THE MIX SHALL BE PG 58-22.



GLENNWOOD DYER RD.

HOT MIX ASPHALT SURFACE REMOVAL, 2-1/4"
POLYMERIZED LEVELING BINDER
(MACHINE METHOD), IL-4.75, N50, 3/4"
HOT MIX ASPHALT SURFACE COURSE,
MIX "D", N70 (IL-9.5MM), 1-1/2"

IMPROVEMENT BEGINS
STA. 10+21



TORRENCE AVE.

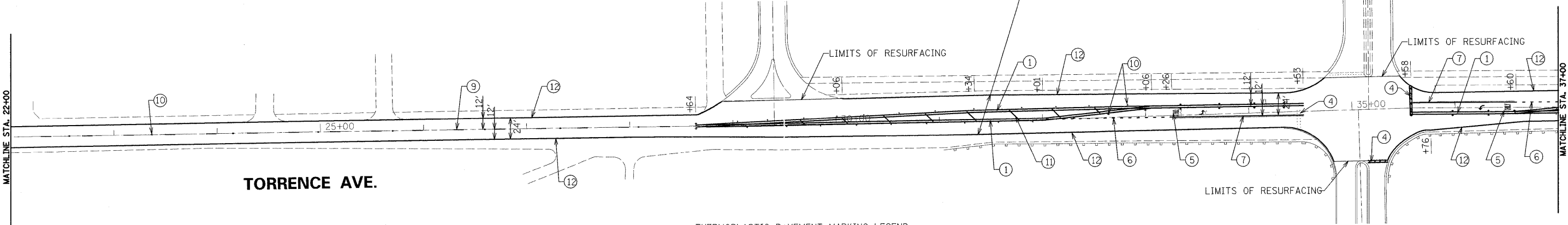
MATCHLINE STA. 22+00



HOT MIX ASPHALT SURFACE REMOVAL, 2-1/4"
POLYMERIZED LEVELING BINDER
(MACHINE METHOD), IL-4.75, N50, 3/4"
HOT MIX ASPHALT SURFACE COURSE,
MIX "D", N70 (IL-9.5MM), 1-1/2"

BILSTONE DRIVE

201ST STREET



TORRENCE AVE.

MATCHLINE STA. 22+00

MATCHLINE STA. 37+00

THERMOPLASTIC PAVEMENT MARKING LEGEND

- ① 4" DOUBLE SOLID YELLOW LINE (11" C-C)
 - ② RESERVED
 - ③ 6" SOLID WHITE LINE
 - ④ 24" SOLID WHITE STOP BAR
 - ⑤ LETTERS AND SYMBOLS
 - ⑥ 6" DOTTED WHITE LINE (2' LINE, 6' SPACE)
 - ⑦ 6" SOLID WHITE TURN LANE LINE
 - ⑧ 4" SINGLE SOLID YELLOW LINE
 - ⑨ 4" YELLOW LANE LINE (10" LINE, 30' SPACE)
 - ⑩ RAISED REFLECTIVE PAVEMENT MARKERS
 - ⑪ 12" SOLID YELLOW DIAGONAL LINE, 45 DEGREES @ 75' O.C.
 - ⑫ 4" WHITE EDGE LINE
- ◁ ONE-WAY CRYSTAL
▲ ONE-WAY AMBER
◆ TWO-WAY AMBER



200 West Front Street
Wheaton, IL 60187

DESIGNED -	KSD	REVISED -	
DRAWN -	KSD	REVISED -	
CHECKED -	CMJ	REVISED -	
DATE -		REVISED -	

**STATE OF ILLINOIS
DEPARTMENT OF TRANSPORTATION**

**TORRENCE AVENUE
ROADWAY AND PAVEMENT MARKING PLAN**

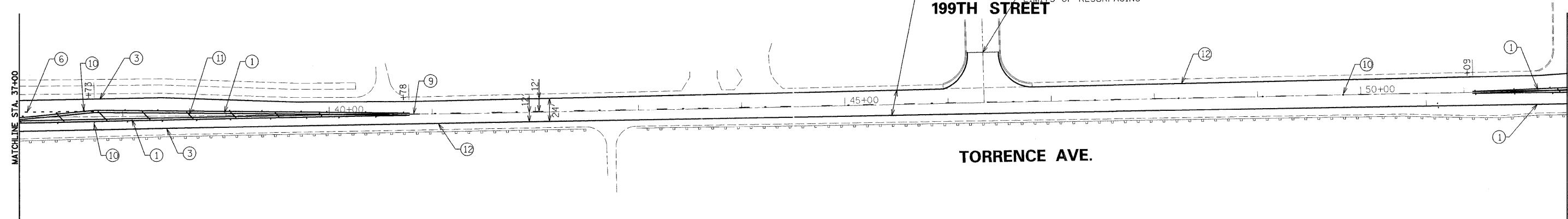
SCALE: 1" = 50' SHEET NO. 1 OF 5 SHEETS STA. 10+00 TO STA. 37+00

F.A.U. RTE.	SECTION	COUNTY	TOTAL SHEETS	SHEET NO.
2937	3077-RS	COOK	24	5
FED. ROAD DIST. NO. 1 ILLINOIS FED. AID PROJECT				CONTRACT NO. 60H36



HOT MIX ASPHALT SURFACE REMOVAL, 2-1/4"
 POLYMERIZED LEVELING BINDER
 (MACHINE METHOD), IL-4.75, N50, 3/4"
 HOT MIX ASPHALT SURFACE COURSE,
 MIX "D", N70 (IL-9.5MM), 1-1/2"

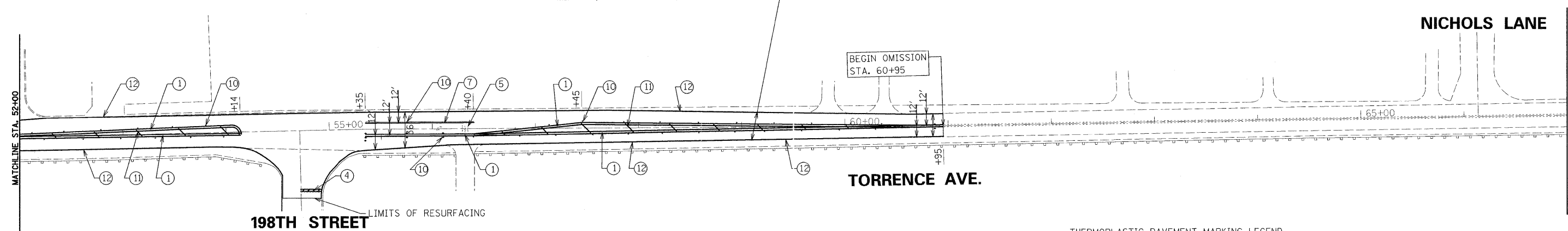
199TH STREET LIMITS OF RESURFACING



HOT MIX ASPHALT SURFACE REMOVAL, 2-1/4"
 POLYMERIZED LEVELING BINDER
 (MACHINE METHOD), IL-4.75, N50, 3/4"
 HOT MIX ASPHALT SURFACE COURSE,
 MIX "D", N70 (IL-9.5MM), 1-1/2"

BEGIN OMISSION
 STA. 60+95

NICHOLS LANE



198TH STREET LIMITS OF RESURFACING

THEMOPLASTIC PAVEMENT MARKING LEGEND

- | | | |
|--------------------------------------------|---------------------------------------------------------|---------------------------------------------------------|
| ① 4" DOUBLE SOLID YELLOW LINE (11" C-C) | ⑦ 6" SOLID WHITE TURN LANE LINE | ▲ ONE-WAY CRYSTAL
▲ ONE-WAY AMBER
◆ TWO-WAY AMBER |
| ② RESERVED | ⑧ 4" SINGLE SOLID YELLOW LINE | |
| ③ 6" SOLID WHITE LINE | ⑨ 4" YELLOW LANE LINE (10" LINE, 30' SPACE) | |
| ④ 24" SOLID WHITE STOP BAR | ⑩ RAISED REFLECTIVE PAVEMENT MARKERS | |
| ⑤ LETTERS AND SYMBOLS | ⑪ 12" SOLID YELLOW DIAGONAL LINE, 45 DEGREES @ 75' O.C. | |
| ⑥ 6" DOTTED WHITE LINE (2' LINE, 6' SPACE) | ⑫ 4" WHITE EDGE LINE | |



200 West Front Street
 Wheaton, IL 60187

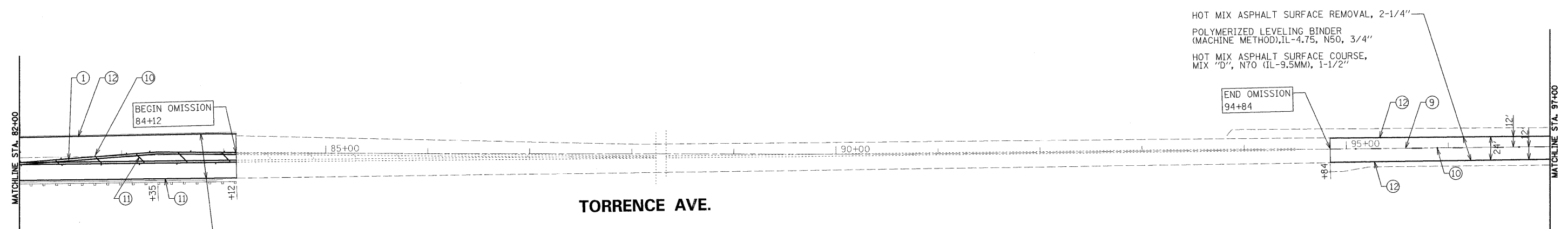
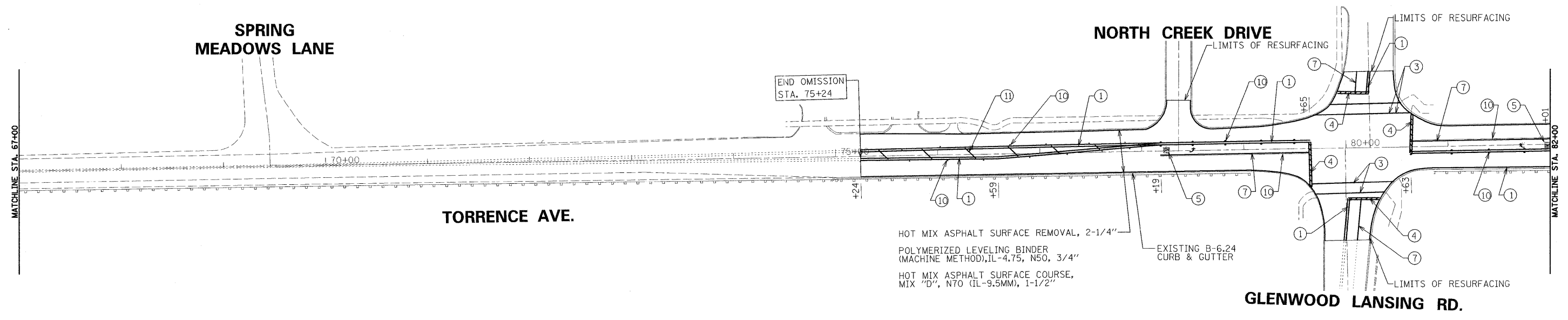
DESIGNED - KSD	REVISED -
DRAWN - KSD	REVISED -
CHECKED - CMJ	REVISED -
DATE -	REVISED -

STATE OF ILLINOIS
 DEPARTMENT OF TRANSPORTATION

TORRENCE AVENUE
 ROADWAY AND PAVEMENT MARKING PLAN

SCALE: SHEET NO. OF SHEETS STA. 37+00 TO STA. 67+00

F.A.I. RTE. 2937	SECTION 3077-RS	COUNTY COOK	TOTAL SHEETS 24	SHEET NO. 6
CONTRACT NO. 60H36				
FED. ROAD DIST. NO. 1 ILLINOIS FED. AID PROJECT				



HOT MIX ASPHALT SURFACE REMOVAL, 2-1/4"

POLYMERIZED LEVELING BINDER (MACHINE METHOD), IL-4.75, N50, 3/4"

HOT MIX ASPHALT SURFACE COURSE, MIX "D", N70 (IL-9.5MM), 1-1/2"

THERMOPLASTIC PAVEMENT MARKING LEGEND

- ① 4" DOUBLE SOLID YELLOW LINE (11" C-C)
 - ② RESERVED
 - ③ 6" SOLID WHITE LINE
 - ④ 24" SOLID WHITE STOP BAR
 - ⑤ LETTERS AND SYMBOLS
 - ⑥ 6" DOTTED WHITE LINE (2' LINE, 6' SPACE)
 - ⑦ 6" SOLID WHITE TURN LANE LINE
 - ⑧ 4" SINGLE SOLID YELLOW LINE
 - ⑨ 4" YELLOW LANE LINE (10" LINE, 30' SPACE)
 - ⑩ RAISED REFLECTIVE PAVEMENT MARKERS
 - ⑪ 12" SOLID YELLOW DIAGONAL LINE, 45 DEGREES @ 75' O.C.
 - ⑫ 4" WHITE EDGE LINE
- ◁ ONE-WAY CRYSTAL
 ▲ ONE-WAY AMBER
 ◆ TWO-WAY AMBER

rjngroup
 Excellence through Ownership

200 West Front Street
 Wheaton, IL 60187

DESIGNED - KSD	REVISED -
DRAWN - KSD	REVISED -
CHECKED - CMJ	REVISED -
DATE -	REVISED -

**STATE OF ILLINOIS
 DEPARTMENT OF TRANSPORTATION**

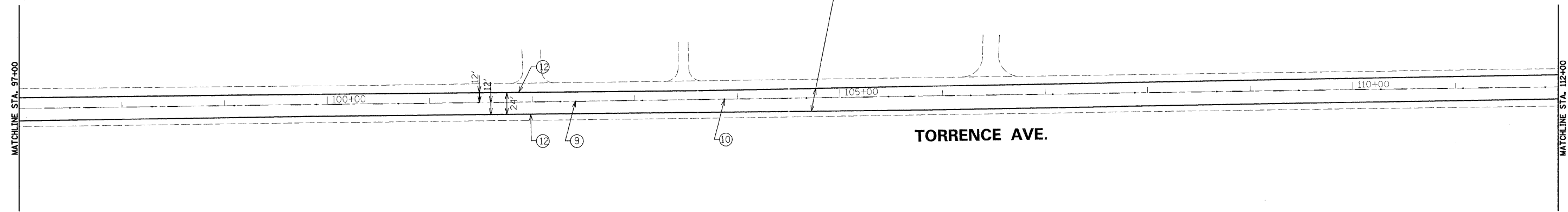
**TORRENCE AVENUE
 ROADWAY AND PAVEMENT MARKING PLAN**

SCALE: 1" = 50' SHEET NO. 3 OF 5 SHEETS STA. 67+00 TO STA. 97+00

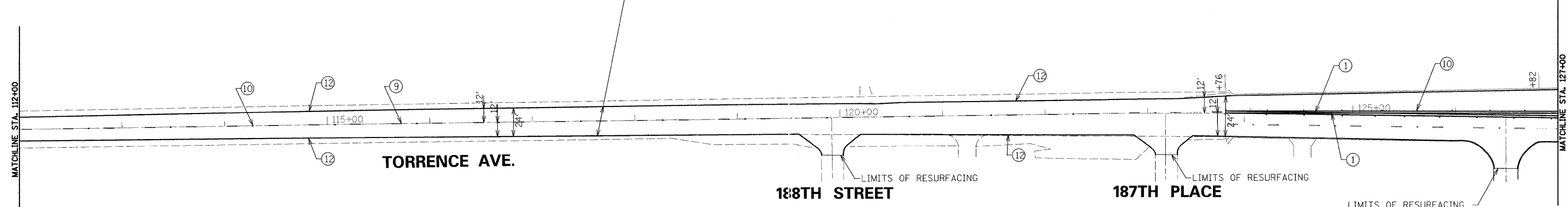
F.A.U. RTE. 2937	SECTION 3077-RS	COUNTY COOK	TOTAL SHEETS 24	SHEET NO. 7
CONTRACT NO. 60H36				
FED. ROAD DIST. NO. 1 ILLINOIS FED. AID PROJECT				



HOT MIX ASPHALT SURFACE REMOVAL, 2-1/4"
 POLYMERIZED LEVELING BINDER
 (MACHINE METHOD), IL-4.75, N50, 3/4"
 HOT MIX ASPHALT SURFACE COURSE,
 MIX "D", N70 (IL-9.5MM), 1-1/2"



HOT MIX ASPHALT SURFACE REMOVAL, 2-1/4"
 POLYMERIZED LEVELING BINDER
 (MACHINE METHOD), IL-4.75, N50, 3/4"
 HOT MIX ASPHALT SURFACE COURSE,
 MIX "D", N70 (IL-9.5MM), 1-1/2"



THERMOPLASTIC PAVEMENT MARKING LEGEND

- | | |
|--------------------------------------------|---------------------------------------------------------|
| ① 4" DOUBLE SOLID YELLOW LINE (11" C-C) | ⑦ 6" SOLID WHITE TURN LANE LINE |
| ② RESERVED | ⑧ 4" SINGLE SOLID YELLOW LINE |
| ③ 6" SOLID WHITE LINE | ⑨ 4" YELLOW LANE LINE (10" LINE, 30' SPACE) |
| ④ 24" SOLID WHITE STOP BAR | ⑩ RAISED REFLECTIVE PAVEMENT MARKERS |
| ⑤ LETTERS AND SYMBOLS | ⑪ 12" SOLID YELLOW DIAGONAL LINE, 45 DEGREES @ 75' O.C. |
| ⑥ 6" DOTTED WHITE LINE (2' LINE, 6' SPACE) | ⑫ 4" WHITE EDGE LINE |

- ◁ ONE-WAY CRYSTAL
- ▲ ONE-WAY AMBER
- ◆ TWO-WAY AMBER



200 West Front Street
 Wheaton, IL 60187

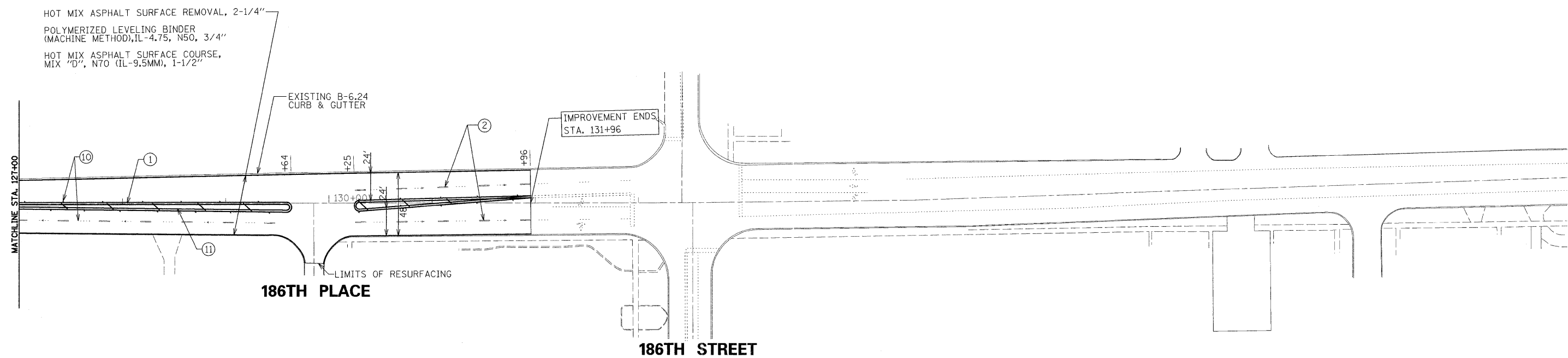
DESIGNED - KSD	REVISED -
DRAWN - KSD	REVISED -
CHECKED - CMJ	REVISED -
DATE -	REVISED -

**STATE OF ILLINOIS
 DEPARTMENT OF TRANSPORTATION**

**TORRENCE AVENUE
 ROADWAY AND PAVEMENT MARKING PLAN**

SCALE: 1" = 50' SHEET NO. 3 OF 5 SHEETS STA. 97+00 TO STA. 127+00

F.A.U. RTE. 2937	SECTION 3077-RS	COUNTY COOK	TOTAL SHEETS 24	SHEET NO. 8
CONTRACT NO. 60H36				
FED. ROAD DIST. NO. 1 ILLINOIS FED. AID PROJECT				



THERMOPLASTIC PAVEMENT MARKING LEGEND

- | | |
|--------------------------------------------|---------------------------------------------------------|
| ① 4" DOUBLE SOLID YELLOW LINE (11" C-C) | ⑦ 6" SOLID WHITE TURN LANE LINE |
| ② 4" WHITE LANE LINE (10' LINE, 30' SPACE) | ⑧ 4" SINGLE SOLID YELLOW LINE |
| ③ 6" SOLID WHITE LINE | ⑨ 4" YELLOW LANE LINE (10" LINE, 30' SPACE) |
| ④ 24" SOLID WHITE STOP BAR | ⑩ RAISED REFLECTIVE PAVEMENT MARKERS |
| ⑤ LETTERS AND SYMBOLS | ⑪ 12" SOLID YELLOW DIAGONAL LINE, 45 DEGREES @ 75' O.C. |
| ⑥ 6" DOTTED WHITE LINE (2' LINE, 6' SPACE) | ⑫ 4" WHITE EDGE LINE |
- ◁ ONE-WAY CRYSTAL
 ▲ ONE-WAY AMBER
 ◆ TWO-WAY AMBER



200 West Front Street
Wheaton, IL 60187

DESIGNED - KSD	REVISED -
DRAWN - KSD	REVISED -
CHECKED - CMJ	REVISED -
DATE -	REVISED -

STATE OF ILLINOIS
DEPARTMENT OF TRANSPORTATION

TORRENCE AVENUE
ROADWAY AND PAVEMENT MARKING PLAN

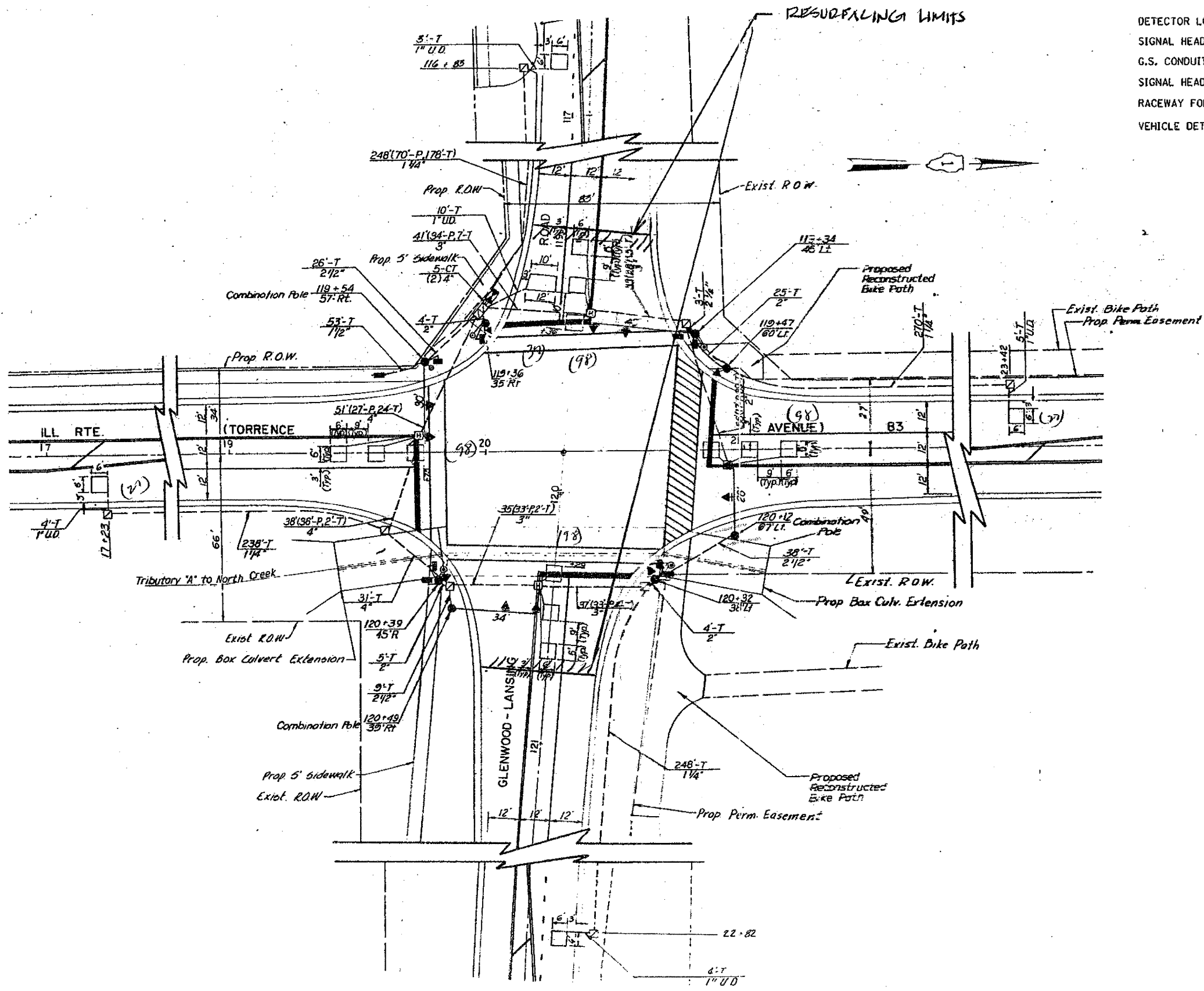
SCALE: 1" = 50' SHEET NO. 3 OF 5 SHEETS STA. 127+00 TO STA. 133+42

F.A.U. RTE.	SECTION	COUNTY	TOTAL SHEETS	SHEET NO.
2937	3077-RS	COOK	24	9
CONTRACT NO. 60H36				

FED. ROAD DIST. NO. 1 ILLINOIS FED. AID PROJECT

TRAFFIC SIGNAL LEGEND

	PROPOSED	EXISTING
DETECTOR LOOP		
SIGNAL HEAD		
G.S. CONDUIT IN TRENCH OR PUSHED		
SIGNAL HEAD WITH BACKPLATE		
RACEWAY FOR MAGNETIC DETECTOR, TYPE I OR II		
VEHICLE DETECTOR, NON-COMPENSATED MAGNETIC TYPE		



THIS PLAN IS FOR THE SOLE PURPOSE OF DETECTOR LOOP REPLACEMENTS ONLY

REPLACE ALL DETECTOR LOOPS AS SHOWN (WITHIN THE RESURFACING LIMITS)

CODE	QUANTITY	UNIT	ITEM
86600600	483	FOOT	DETECTOR LOOP, REPLACEMENT

FILE NAME = c:\pwork\PIW00T\KANTHAPHIXAY8C\d01126	USER NAME = kanthaphixayba 4\traffic.legend.v7.dgn	DESIGNED - BCK DRAWN - BCK	REVISED - REVISED - REVISED - REVISED -	STATE OF ILLINOIS DEPARTMENT OF TRANSPORTATION	DISTRICT ONE - DETECTOR LOOP REPLACEMENT ILL. RTE. 83 @ GLENWOOD/LANSING RD.	F.A.I. RTE. 2937	SECTION 3077-RS	COUNTY Cook	TOTAL SHEETS 24	SHEET NO. 10
	PLOT SCALE = 3/32" = 1' IN. PLOT DATE = 4/3/2009	CHECKED - DAD DATE -	SCALE: NONE SHEET NO. OF SHEETS STA. TO STA.			FED. ROAD DIST. NO. 60436	ILLINOIS FED. AID PROJECT	CONTRACT NO.		

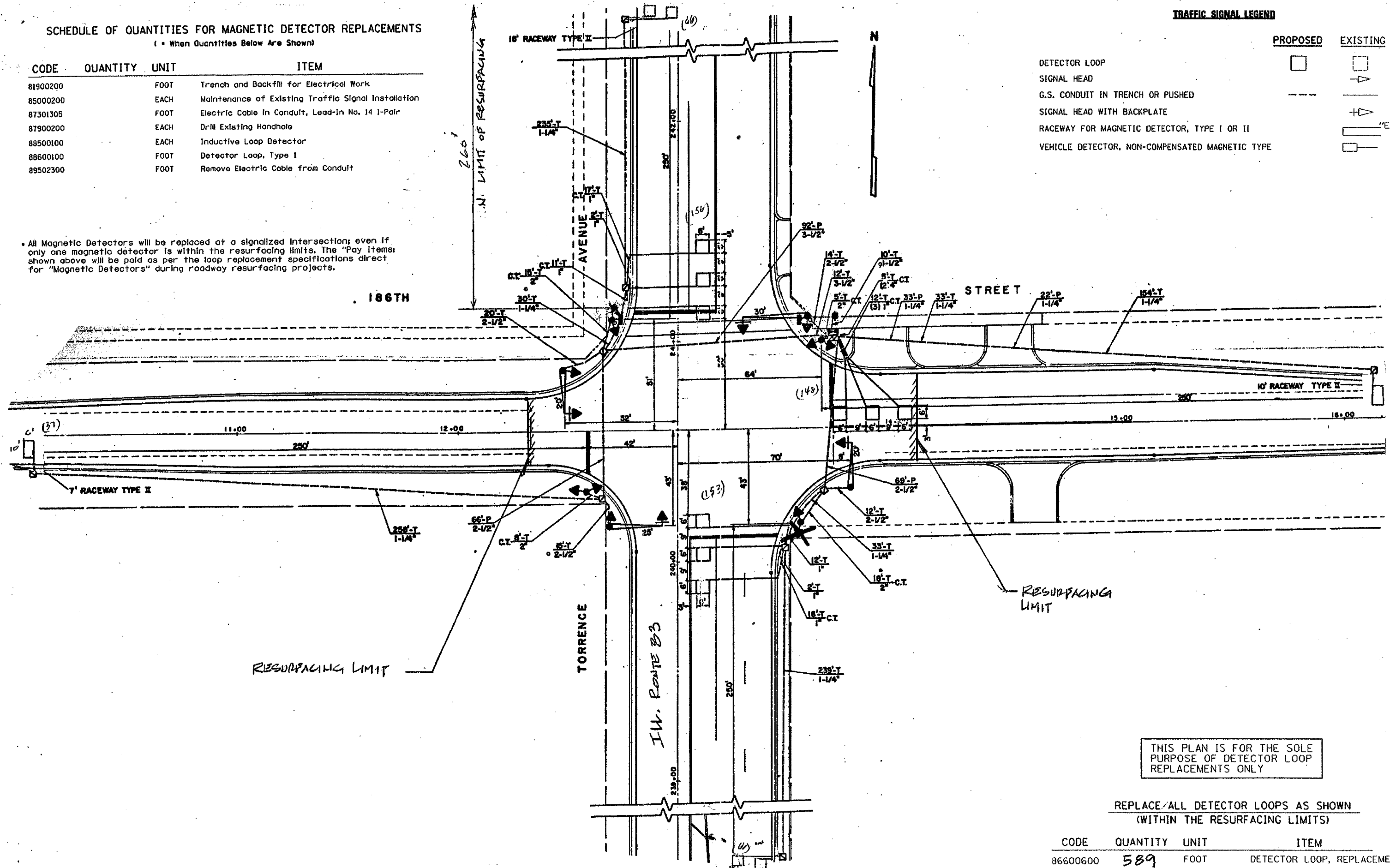
SCHEDULE OF QUANTITIES FOR MAGNETIC DETECTOR REPLACEMENTS
(- When Quantities Below Are Shown)

CODE	QUANTITY	UNIT	ITEM
81900200		FOOT	Trench and Backfill for Electrical Work
85000200		EACH	Maintenance of Existing Traffic Signal Installation
87301305		FOOT	Electric Cable In Conduit, Lead-in No. 14 1-Pair
87900200		EACH	Drill Existing Handhole
88500100		EACH	Inductive Loop Detector
88600100		FOOT	Detector Loop, Type 1
89502300		FOOT	Remove Electric Cable from Conduit

All Magnetic Detectors will be replaced at a signalized Intersection; even if only one magnetic detector is within the resurfacing limits. The "Pay Items" shown above will be paid as per the loop replacement specifications direct for "Magnetic Detectors" during roadway resurfacing projects.

TRAFFIC SIGNAL LEGEND

	PROPOSED	EXISTING
DETECTOR LOOP		
SIGNAL HEAD		
G.S. CONDUIT IN TRENCH OR PUSHED		
SIGNAL HEAD WITH BACKPLATE		
RACEWAY FOR MAGNETIC DETECTOR, TYPE I OR II		
VEHICLE DETECTOR, NON-COMPENSATED MAGNETIC TYPE		



THIS PLAN IS FOR THE SOLE PURPOSE OF DETECTOR LOOP REPLACEMENTS ONLY

REPLACE ALL DETECTOR LOOPS AS SHOWN (WITHIN THE RESURFACING LIMITS)

CODE	QUANTITY	UNIT	ITEM
86600600	589	FOOT	DETECTOR LOOP, REPLACEMENT

FILE NAME =	USER NAME = kanthaphixaybc	DESIGNED - BCK	REVISED -
PROJECT WORK\PHIDOT\KANTHAPHIXAYBC\081126	1\Traffic.legend.v7.dgn	DRAWN - BCK	REVISED -
	PLOT SCALE = 3/4" = 1' IN.	CHECKED - OAD	REVISED -
	PLOT DATE = 4/3/2009	DATE -	REVISED -

STATE OF ILLINOIS
DEPARTMENT OF TRANSPORTATION

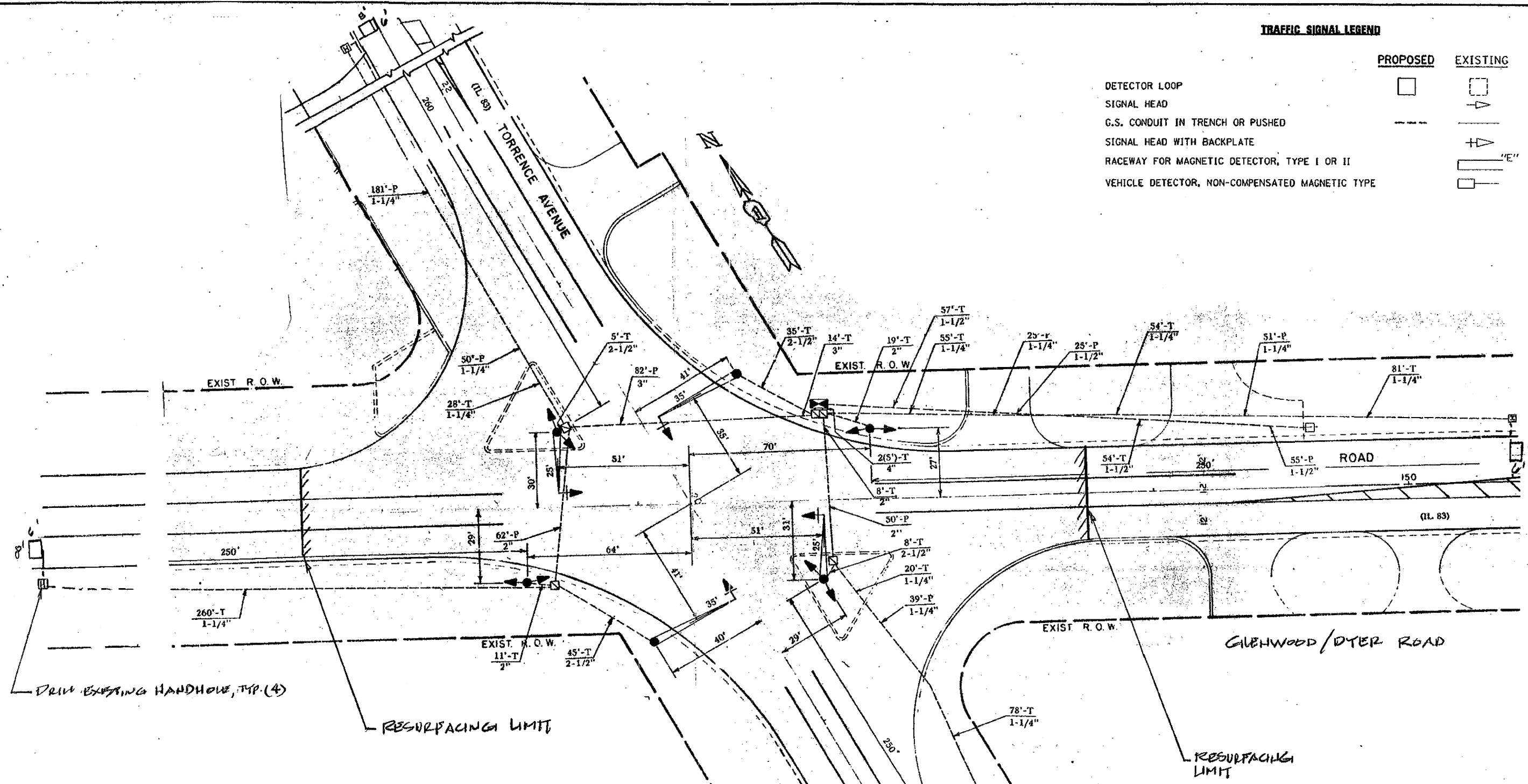
DISTRICT ONE - DETECTOR LOOP REPLACEMENT
ILL. RTE. 83 (TORRENCE AV.) @ 186TH STREET

F.A.I. RYE	SECTION	COUNTY	TOTAL SHEETS	SHEET NO.
2937	3077-RS	COOK	24	11
CONTRACT NO. 60H36			FED. ROAD DIST. NO. [ILLINOIS] FED. AID PROJECT	

SCALE: NONE SHEET NO. OF SHEETS STA. TO STA.

TRAFFIC SIGNAL LEGEND

	PROPOSED	EXISTING
DETECTOR LOOP		
SIGNAL HEAD		
G.S. CONDUIT IN TRENCH OR PUSHED		
SIGNAL HEAD WITH BACKPLATE		
RACEWAY FOR MAGNETIC DETECTOR, TYPE I OR II		
VEHICLE DETECTOR, NON-COMPENSATED MAGNETIC TYPE		



SCHEDULE OF QUANTITIES FOR MAGNETIC DETECTOR REPLACEMENTS

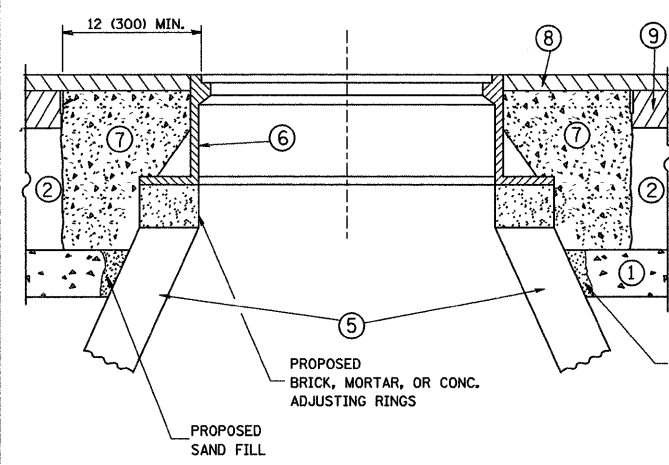
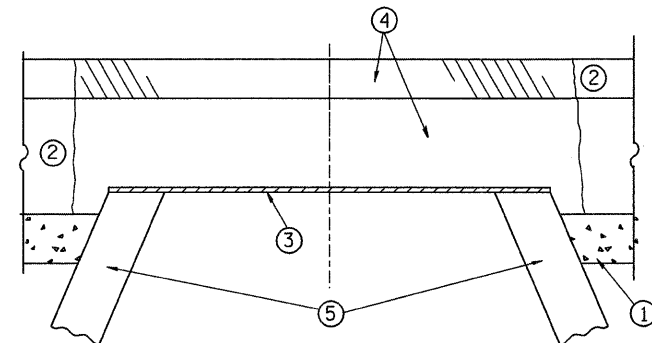
(* When Quantities Below Are Shown)

CODE	QUANTITY	UNIT	ITEM
81900200	-0-	FOOT	Trench and Backfill for Electrical Work
85000200	1	EACH	Maintenance of Existing Traffic Signal Installation
87301305	1480	FOOT	Electric Cable in Conduit, Lead-In No. 14 1-Pair
87900200	4	EACH	Drill Existing Handhole
88500100	4	EACH	Inductive Loop Detector
88600100	64	FOOT	Detector Loop, Type I
89502300	1200	FOOT	Remove Electric Cable from Conduit

THIS PLAN IS FOR THE SOLE PURPOSE OF DETECTOR LOOP REPLACEMENTS ONLY

REPLACE ALL DETECTOR LOOPS AS SHOWN (WITHIN THE RESURFACING LIMITS)

CODE	QUANTITY	UNIT	ITEM
86600600	62	FOOT	DETECTOR LOOP, REPLACEMENT



CONSTRUCTION PROCEDURES

STAGE 1 (BEFORE PAVEMENT MILLING)

- A) REMOVE A MINIMUM OF 12 (300) OF THE PAVEMENT FROM AROUND THE STRUCTURE.
- B) REMOVE THE EXISTING FRAME AND LID FROM THE STRUCTURE.
- C) COVER THE STRUCTURE OPENING WITH A 36 (900) DIAMETER METAL PLATE.
- D) BACKFILL WITH CRUSHED STONE AND A MINIMUM 1 1/2 (40) THICK HMA SURFACE MIX APPROVED BY THE ENGINEER.

STAGE 2 (AFTER PAVEMENT MILLING)

- A) REMOVE THE HMA SURFACE MIX AND CRUSHED STONE.
- B) INSTALL THE FRAME AND LID; ADJUST THE FRAME TO ITS FINAL SURFACE ELEVATION.
- C) THE SURROUNDING SPACE SHALL BE FILLED WITH CLASS SI CONCRETE, OR HMA SURFACE COURSE OR HMA BINDER COURSE TO THE ELEVATION OF THE SURFACE OF THE EXISTING BASE COURSE OR THE BINDER COURSE.

THE PROCEDURE EXPLAINED ABOVE SHALL CONFORM TO THE APPLICABLE PORTIONS OF SECTIONS 353, 406, 602, AND 603 OF THE STANDARD SPECIFICATIONS.

LEGEND

- ① SUB-BASE GRANULAR MATERIAL
- ② EXISTING PAVEMENT
- ③ 36 (900) DIAMETER METAL PLATE
- ④ PROPOSED CRUSHED STONE AND HMA SURFACE MIX
- ⑤ EXISTING STRUCTURE
- ⑥ FRAME AND LID (SEE NOTES)
- ⑦ CLASS SI CONCRETE, HMA SURFACE COURSE OR HMA BINDER COURSE
- ⑧ PROPOSED HMA SURFACE COURSE
- ⑨ PROPOSED HMA BINDER COURSE

LOCATION OF STRUCTURES:

THE CONTRACTOR WILL BE REQUIRED TO KEEP A RECORD OF THE LOCATIONS OF THE BURIED STRUCTURES ACCORDING TO THE STATION AND DISTANCE LEFT OR RIGHT OF THE CENTERLINE OF PAVEMENT. UPON COMPLETION OF THE WORK, THE CONTRACTOR WILL DELIVER THE RECORD TO THE ENGINEER.

BASIS OF PAYMENT: THIS WORK WILL BE PAID FOR AT THE CONTRACT UNIT PRICE PER EACH FOR "FRAMES AND LIDS TO BE ADJUSTED, SPECIAL"

NEW FRAMES AND LIDS, WHEN SPECIFIED, WILL BE PAID FOR SEPARATELY.

NOTES:

EXISTING BROKEN FRAMES AND LIDS SHALL BE REMOVED AND DISPOSED OF BY THE CONTRACTOR AND SHALL BE REPLACED AS DIRECTED BY THE ENGINEER. REPLACEMENT FRAMES AND LIDS WILL BE PAID FOR IN ACCORDANCE WITH ARTICLE 109.04 OF THE STANDARD SPECIFICATIONS UNLESS A SEPARATE PAY ITEM HAS BEEN PROVIDED.

IF THE EXISTING LIDS ARE OPEN, THE FRAME WILL BE ADJUSTED TO THE ELEVATION OF THE MILLED PAVEMENT SURFACE PRIOR TO THE MILLING OPERATION. THE FRAME WILL NOT BE REMOVED AND COVERED BY THE METAL PLATE.

CITY OF CHICAGO CASTINGS ARE THE PROPERTY OF THE CITY AND THE CONTRACTOR SHALL NOTIFY THE CITY FOR REMOVAL AND DISPOSITION OF THE CASTINGS.

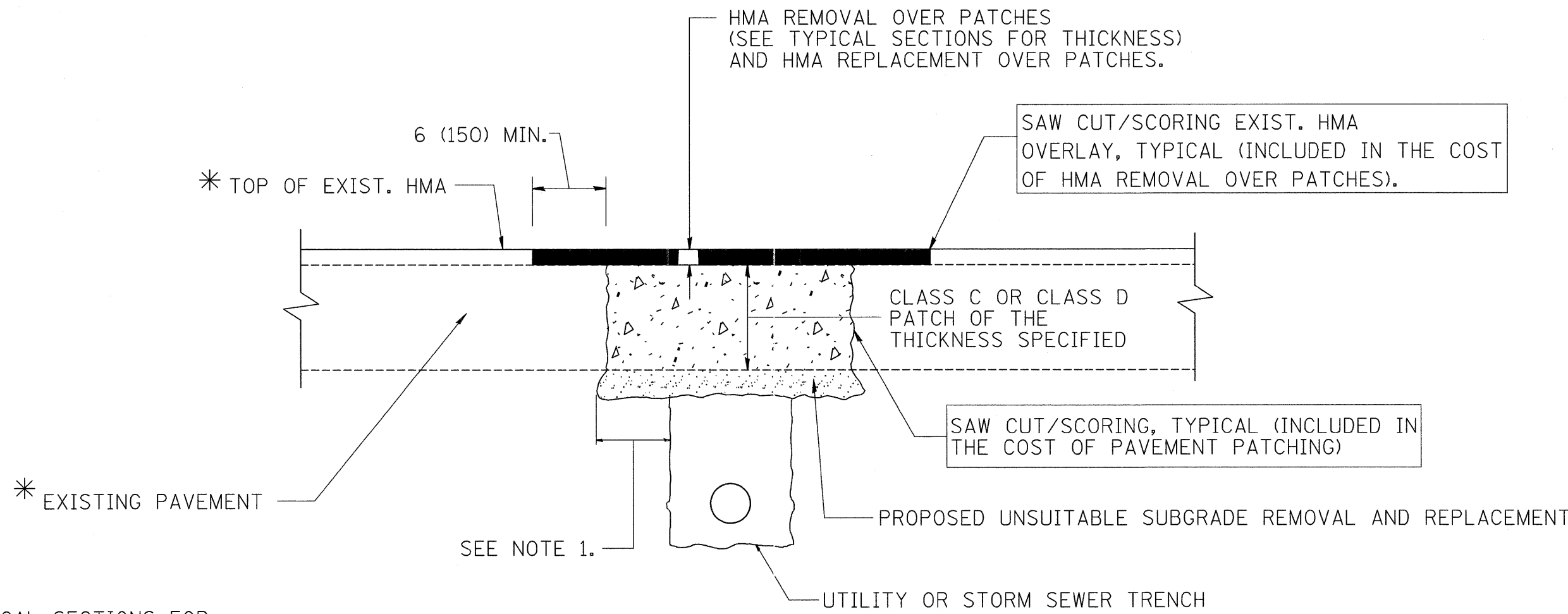
THE METAL PLATE USED TO COVER THE STRUCTURE SHALL REMAIN THE PROPERTY OF THE CONTRACTOR.

WHEN STRUCTURES ARE TO BE ADJUSTED OR RECONSTRUCTED, THE LOWERING AND RAISING OF THE FRAMES AND LIDS WILL NOT BE PAID FOR SEPARATELY BUT WILL BE INCLUDED IN THE COST OF THE CORRESPONDING PAY ITEM.

DETAILS FOR FRAMES AND LIDS ADJUSTMENT WITH MILLING

ALL DIMENSIONS ARE IN INCHES (MILLIMETERS) UNLESS OTHERWISE SHOWN

FILE NAME = W:\diststd\22x34\bd08.dgn	USER NAME = geglianobt	DESIGNED - R. SHAH	REVISED - R. SHAH 03-10-95	STATE OF ILLINOIS DEPARTMENT OF TRANSPORTATION	DETAILS FOR FRAMES AND LIDS ADJUSTMENT WITH MILLING			F.A.U. RTE. 2937	SECTION 3077-RS	COUNTY COOK	TOTAL SHEETS 24	SHEET NO. 13
	PLOT SCALE = 50.0000' / IN.	CHECKED -	REVISED - A. ABBAS 03-21-97		SCALE: NONE	SHEET NO. 1 OF 1 SHEETS	STA.	TO STA.	BD600-03 (BD-8)		FED. ROAD DIST. NO. 1 ILLINOIS FED. AID PROJECT	
	PLOT DATE = 1/4/2008	DATE - 10-25-94	REVISED - R. WIEDEMAN 05-14-04									
			REVISED - R. BORO 01-01-07									



* SEE TYPICAL SECTIONS FOR THICKNESS AND MATERIALS

NOTES:

1. THE WIDTH OF THE FULL DEPTH PATCH OVER A TRENCH SHALL BE 12 (300) WIDER ON EACH SIDE OF THE TRENCH.
2. FOR METHOD OF MEASUREMENT AND BASIS OF PAYMENT, SEE RECURRING SPECIAL PROVISION "PATCHING WITH HOT-MIX ASPHALT OVERLAY REMOVAL".

SEQUENCE OF CONSTRUCTION

1. REMOVE THE EXISTING HMA MATERIAL OVER THE AREA TO BE PATCHED.
2. REMOVE AND REPLACE FULL DEPTH PATCHES
3. REPLACE HMA MATERIAL OVER THE AREA TO BE PATCHED.

ALL DIMENSIONS ARE IN INCHES (MILLIMETERS) UNLESS OTHERWISE SHOWN.

FILE NAME = W:\diststd\22x34\bd22.dgn	USER NAME = geglienobt	DESIGNED - R. SHAH	REVISED - A. ABBAS 01-20-98	STATE OF ILLINOIS DEPARTMENT OF TRANSPORTATION	PAVEMENT PATCHING FOR HMA SURFACED PAVEMENT			F.A.U. RTE.	SECTION	COUNTY	TOTAL SHEETS	SHEET NO.
	PLOT SCALE = 58.000' / IN.	CHECKED -	REVISED - R. BORO 01-01-07					2937	3077-RS	COOK	24	14
PLOT DATE = 1/4/2008	DATE - 10-25-94	REVISED - R. BORO 09-04-07	SCALE: NONE		SHEET NO. 1 OF 1 SHEETS	STA.	TO STA.	BD400-04 (BD-22)		CONTRACT NO. 60H36		
							FED. ROAD DIST. NO. 1 ILLINOIS FED. AID PROJECT					

VARIABLE - TO MEET EXISTING DIMENSIONS AND FIELD CONDITIONS (SEE NOTE ②)

PROP. CONC. CURB OR CURB AND GUTTER REPLACEMENT IN ACCORDANCE WITH STATE STANDARD 606001. (SEE NOTE ②)

SAW CUT FULL DEPTH - INCLUDED IN THE COST OF SIDEWALK, DRIVEWAY OR MEDIAN SURFACE REMOVAL PAY ITEM.

SEE STATE STANDARD 606001

18" (450) MAX.

EXISTING OR PROPOSED HMA SURFACE (IF APPLICABLE)

1/4" (5) **

EXISTING SIDEWALK, DRIVEWAY, MEDIAN SURFACE OR GROUND.

PROPOSED SIDEWALK, DRIVEWAY PAVEMENT, MEDIAN SURFACE OR SALT TOLERANT SOD AND TOP SOIL, 4" (100) SOD RESTORATION (SEE NOTE ①).

EXISTING CONCRETE PAVEMENT, CONCRETE BASE COURSE OR FLEXIBLE PAVEMENT

T/2 *

SUITABLE BACKFILL MATERIAL (INCLUDED IN THE COST OF CURB OR CURB AND GUTTER REMOVAL AND REPLACEMENT)

3" (75) MIN.

PROPOSED 3/4" (20) PREFORMED EXPANSION JOINT AT CONCRETE SIDEWALKS, DRIVEWAYS, AND MEDIANS. (INCLUDED IN THE COST OF CURB OR CURB AND GUTTER REMOVAL AND REPLACEMENT.)

* 3" (75) MINIMUM FROM TOP AND BOTTOM OF THE CONCRETE PAVEMENT OR BASE COURSE.

** IF THE FINAL SURFACE OF THE PAVEMENT IS CONCRETE, THE GUTTER IS TO BE FLUSH WITH THE PAVEMENT.

NOTE: ① SIDEWALK, DRIVEWAY PAVEMENT OR MEDIAN SURFACE SHALL BE SIMILAR TO THE MATERIAL BEING REMOVED AND WILL BE PAID FOR SEPARATELY.

SALT TOLERANT SOD AND TOP SOIL, 4" (100) RESTORATION WILL NOT BE PAID FOR SEPARATELY, BUT SHALL BE INCLUDED IN THE COST OF CURB OR CURB AND GUTTER REMOVAL AND REPLACEMENT.

② CURB OR CURB AND GUTTER REPLACEMENT SHALL MATCH THE SHAPE OF THE EXISTING CURB OR CURB AND GUTTER UNLESS OTHERWISE SPECIFIED.

③ FOR CURB OR CURB AND GUTTER REMOVAL AND REPLACEMENT ADJACENT TO FLEXIBLE PAVEMENT DELETE EPOXY COATED TIE BARS.

④ LONGITUDINAL BARS, IF ENCOUNTERED IN THE EXISTING CURB OR CURB AND GUTTER, ARE NOT TO BE REPLACED. CUTTING AND REMOVING LONGITUDINAL BARS SHALL BE INCLUDED IN THE COST OF CURB OR CURB AND GUTTER REMOVAL AND REPLACEMENT.

⑤ THE COST OF HMA SURFACE REMOVAL IN THE EXISTING GUTTER FLAG SHALL BE INCLUDED IN THE COST OF THE CURB AND GUTTER REMOVAL AND REPLACEMENT.

⑥ THE REMOVAL AND REPLACEMENT OF THE EXISTING CURB OR CURB AND GUTTER SHALL BE DONE IN ACCORDANCE WITH THE APPLICABLE PORTIONS OF SECTION 440 AND 606 OF THE STANDARD SPECIFICATIONS.

⑦ THE LOCATIONS OF REMOVAL AND REPLACEMENT OF EXISTING CURB OR CURB AND GUTTER SHALL BE DETERMINED BY THE RESIDENT ENGINEER AT THE TIME OF CONSTRUCTION.

UNSUITABLE SUB-BASE MATERIAL TO BE REMOVED, IF DIRECTED BY THE ENGINEER, SHALL BE REPLACED WITH EITHER SUB-BASE GRANULAR MATERIAL, TYPE B OR ADDITIONAL THICKNESS OF CONCRETE.

REMOVAL AND REPLACEMENT 4" (100) OR LESS IS INCLUDED IN THE COST OF CURB OR CURB AND GUTTER REMOVAL AND REPLACEMENT.

REMOVAL AND REPLACEMENT IN EXCESS OF 4" (100) WILL BE PAID FOR IN ACCORDANCE WITH ARTICLE 109.04 OF THE STANDARD SPECIFICATIONS.

PROPOSED #6 (20) EPOXY COATED TIE BARS 24" (600) LONG AT 24" (600) CENTERS WILL NOT BE PAID FOR SEPARATELY. DELETE EPOXY COATED TIE BARS IF EXISTING TIE BARS ARE USUABLE AS DETERMINED BY THE ENGINEER. (SEE NOTE ③).

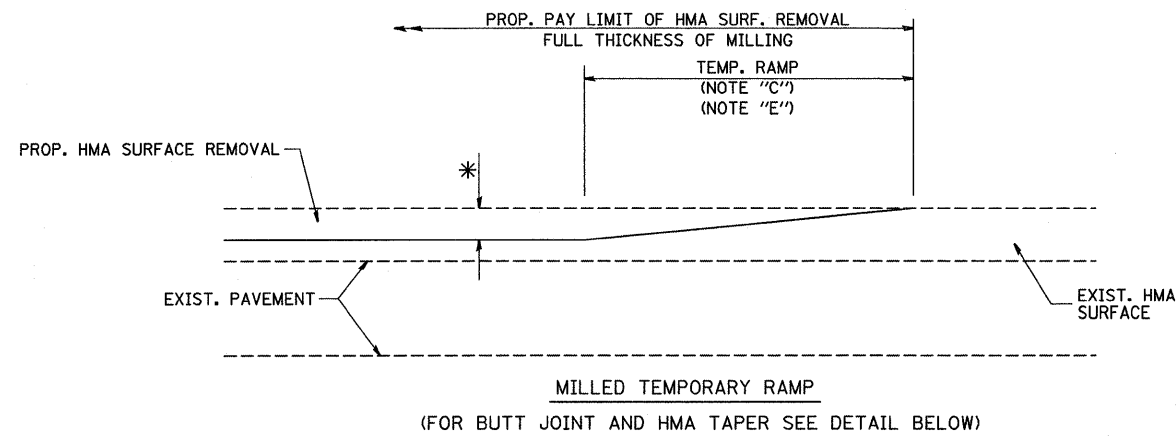
BASIS OF PAYMENT:

THIS WORK WILL BE PAID FOR AT THE CONTRACT UNIT PRICE PER FOOT (METER) FOR "CURB REMOVAL AND REPLACEMENT" OR "COMBINATION CONCRETE CURB AND GUTTER REMOVAL AND REPLACEMENT".

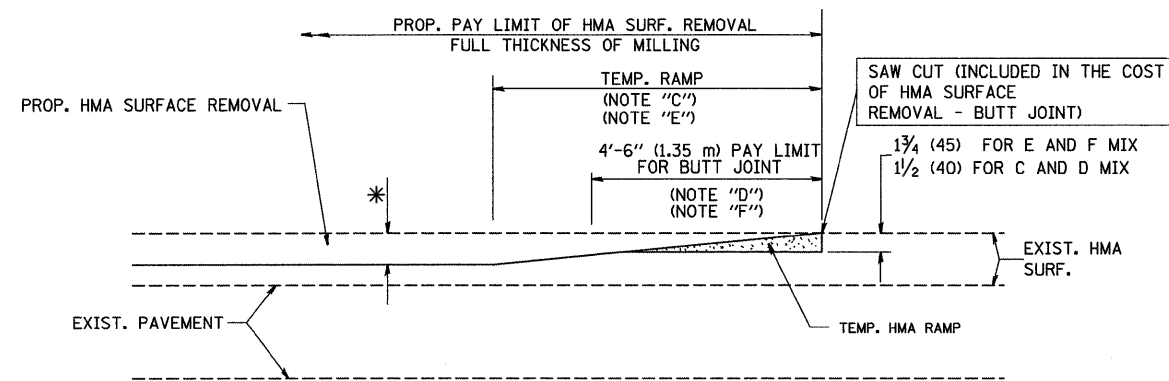
CURB OR CURB AND GUTTER REMOVAL AND REPLACEMENT

ALL DIMENSIONS ARE IN INCHES (MILLIMETERS) UNLESS OTHERWISE SHOWN.

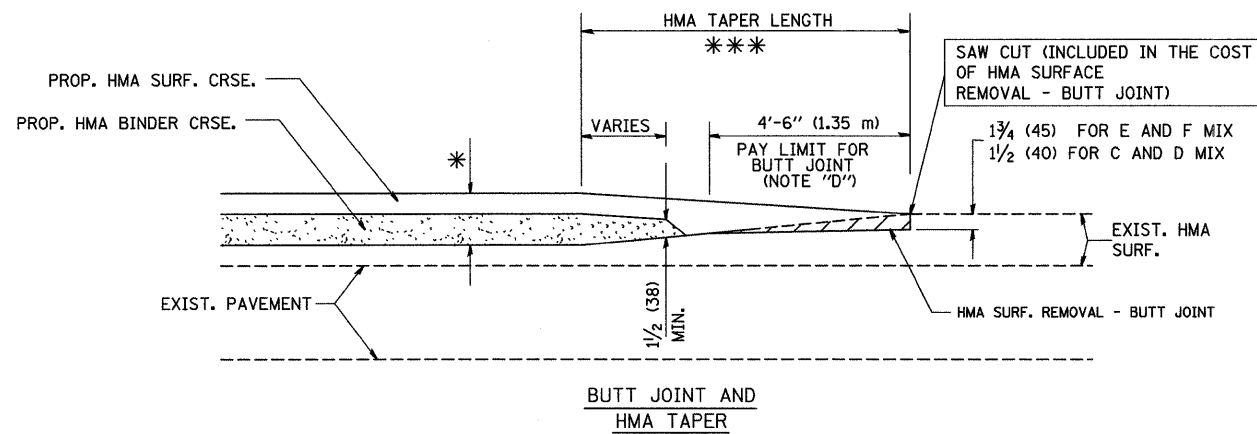
FILE NAME = W:\di\etd\22x34\bd24.dgn	USER NAME = geglienobt	DESIGNED - A. HOUSEH	REVISED - R. SHAH 10-03-96	STATE OF ILLINOIS DEPARTMENT OF TRANSPORTATION	CURB OR CURB AND GUTTER REMOVAL AND REPLACEMENT			F.A.U. RTE. 2937	SECTION 3077-RS	COUNTY COOK	TOTAL SHEETS 24	SHEET NO. 15
	PLOT SCALE = 50.000' / IN.	CHECKED -	REVISED - A. ABBAS 03-21-97		SCALE: NONE	SHEET NO. 1 OF 1 SHEETS	STA.	TO STA.	BD600-06 (BD-24)		CONTRACT NO. 60H36	
	PLOT DATE = 1/4/2008	DATE - 03-11-94	REVISED - M. GOMEZ 01-22-01		FED. ROAD DIST. NO. 1 ILLINOIS FED. AID PROJECT							
			REVISED - R. BORO 01-01-07									



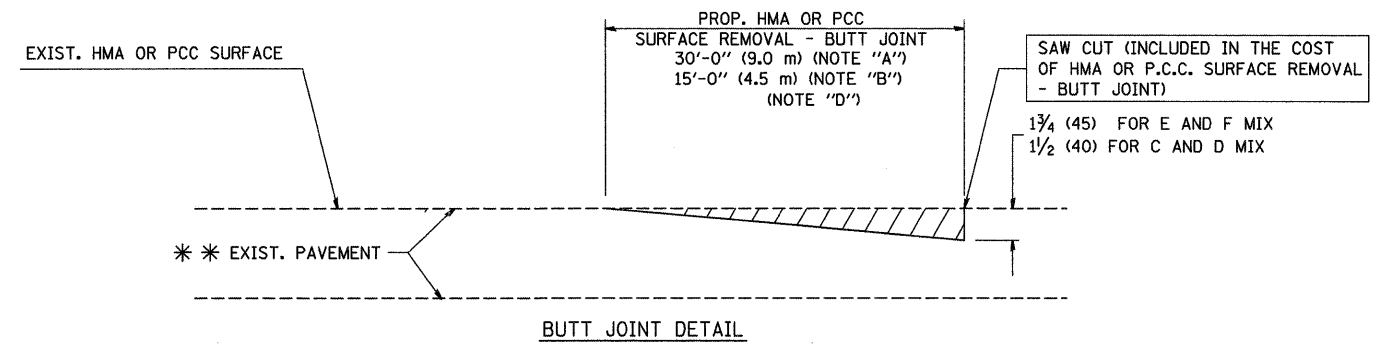
OPTION 1



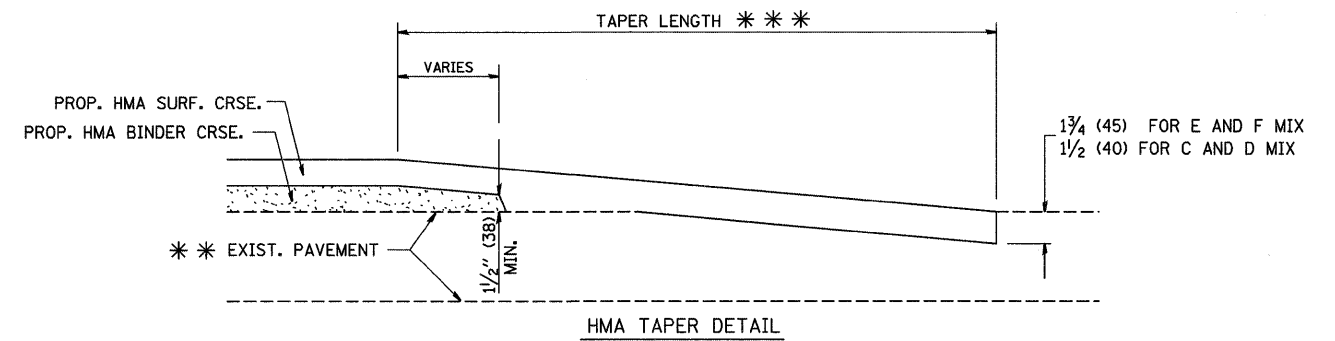
**OPTION 2
TYPICAL TEMPORARY RAMP**



TYPICAL BUTT JOINT AND HMA TAPER FOR MILLING AND RESURFACING



BUTT JOINT DETAIL



HMA TAPER DETAIL

TYPICAL BUTT JOINT AND HMA TAPER FOR RESURFACING ONLY

*** PC CONCRETE, HMA OR HMA RESURFACED PAVEMENT.

NOTES

- A: MAINLINE ROADWAYS AND MAJOR SIDE ROADS.
 - B: MINOR SIDE ROADS.
 - C: THE TEMP. RAMP SHALL BE CONSTRUCTED IMMEDIATELY UPON REMOVAL OF THE EXISTING HMA SURFACE.
 - D: THE BUTT JOINT SHALL BE CONSTRUCTED IMMEDIATELY PRIOR TO PLACING THE PROPOSED HMA COURSES.
 - E: TAPER THE TEMP. RAMP AT A RATE OF 3'-0" (900 mm) PER 1 INCH (25 mm) OF MILLING THICKNESS.
 - F: INSTALLATION AND REMOVAL OF THE 4'-6" (1.35 m) TEMP. RAMP IS INCLUDED IN COST OF HMA SURFACE REMOVAL - BUTT JOINT
 - G: SEE ARTICLE 406.08 AND 406.14 OF THE STANDARD SPECIFICATIONS FOR "HMA AND/OR PCC SURFACE REMOVAL, BUTT JOINT".
- * * * SEE TYPICAL SECTIONS FOR MILLING THICKNESS.
- * * * 20'-0" (6.1 m) PER 1 (25) RESURFACING (NOTE "A")
10'-0" (3.0 m) PER 1 (25) RESURFACING (NOTE "B")

BASIS OF PAYMENT:

THE BUTT JOINT WILL BE PAID FOR AT THE CONTRACT UNIT PRICE PER SQUARE YARD (SQUARE METER) FOR "HOT-MIX ASPHALT SURFACE REMOVAL - BUTT JOINT" OR FOR "PORTLAND CEMENT CONCRETE SURFACE REMOVAL - BUTT JOINT".

ALL DIMENSIONS ARE IN INCHES (MILLIMETERS) UNLESS OTHERWISE SHOWN.

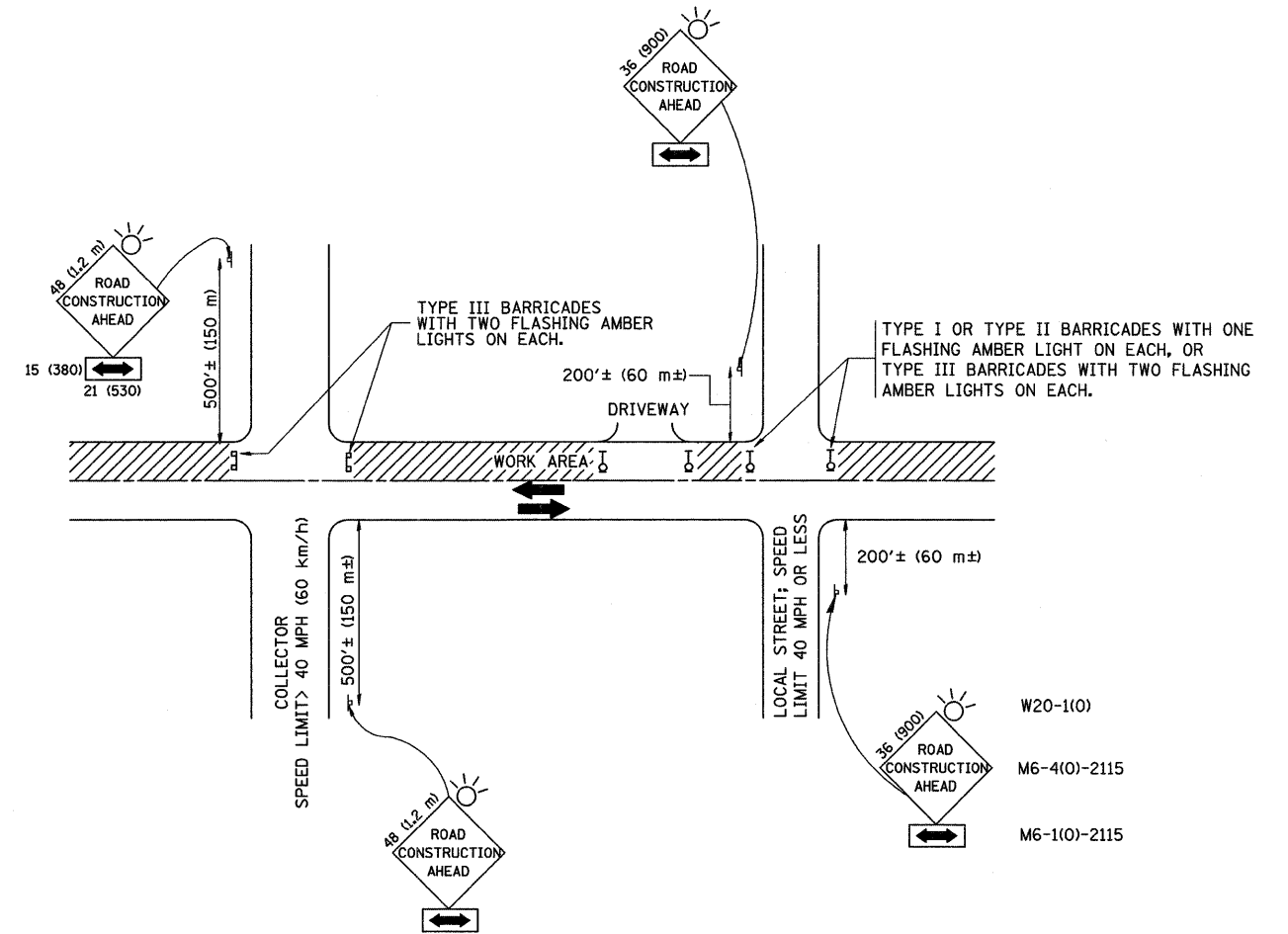
FILE NAME = W:\diststd\22x34\bd32.dgn	USER NAME = geglienobt	DESIGNED - M. DE YONG	REVISED - R. SHAH 10-25-94
		DRAWN -	REVISED - A. ABBAS 03-21-97
	PLOT SCALE = 50.0000' / IN.	CHECKED -	REVISED - M. GOMEZ 04-06-01
	PLOT DATE = 1/4/2008	DATE - 06-13-90	REVISED - R. BORO 01-01-07

**STATE OF ILLINOIS
DEPARTMENT OF TRANSPORTATION**

**BUTT JOINT AND
HMA TAPER DETAILS**

SCALE: NONE SHEET NO. 1 OF 1 SHEETS STA. TO STA.

F.A.U. RTE.	SECTION	COUNTY	TOTAL SHEETS	SHEET NO.
2937	3077-RS	COOK	24	16
BD400-05 BD32			CONTRACT NO. 60H36	
FED. ROAD DIST. NO. 1 ILLINOIS FED. AID PROJECT				



TRAFFIC CONTROL AND PROTECTION FOR SIDE ROADS, INTERSECTIONS, AND DRIVEWAYS

NOTES:

- A. FOR NO LANE RESTRICTION ON THE SIDE ROAD OR DRIVEWAYS
 - 1. SIDE ROAD WITH A SPEED LIMIT OF 40 MPH (60 km/h) OR LESS AS SHOWN ON THE DRAWING AND AS DIRECTED BY THE ENGINEER:
 - a) ONE ROAD CONSTRUCTION AHEAD SIGN 36 x 36 (900x900) WITH A FLASHER AND FLAG MOUNTED ON IT APPROXIMATELY 200' (60 m) IN ADVANCE OF THE MAIN ROUTE.
 - b) THE CLOSED PORTION OF THE MAIN ROUTE SHALL BE PROTECTED BY BLOCKING WITH TYPE I, TYPE II OR TYPE III BARRICADES, 1/3 OF THE CROSS SECTION OF THE CLOSED PORTION.
 - 2. SIDE ROAD WITH A SPEED LIMIT GREATER THAN 40 MPH (60 km/h) AS SHOWN ON THE DRAWING AND AS DIRECTED BY THE ENGINEER:
 - a) ONE ROAD CONSTRUCTION AHEAD SIGN 48 x 48 (1.2 m x 1.2 m) WITH A FLASHER MOUNTED ON IT APPROXIMATELY 500' (150 m) IN ADVANCE OF THE MAIN ROUTE.
 - b) THE CLOSED PORTION OF THE MAIN ROUTE SHALL BE PROTECTED BY BLOCKING WITH TYPE III BARRICADES, 1/2 OF THE CROSS SECTION OF THE CLOSED PORTION.
- 3. WHEN THE SIDE ROAD LIES BETWEEN THE BEGINNING OF THE MAINLINE SIGNING AND THE WORK ZONE, A SINGLE HEADED ARROW (M6-1) SHALL BE USED IN LIEU OF THE DOUBLE HEADED ARROW (M6-4).

- B. FOR A LANE CLOSURE ON A SIDE ROAD OR DRIVEWAY:

USE APPLICABLE PORTIONS OF THE TYPICAL APPLICATION OF TRAFFIC CONTROL DEVICES (STD. 701501, STD. 701606 OR THE APPROPRIATE STANDARD). THE SPACING OF SIGNS AND BARRICADES SHALL BE ADJUSTED FOR FIELD CONDITIONS AS DIRECTED BY THE ENGINEER. THE DIRECTIONAL ARROW SHALL BE COVERED OR REMOVED WHEN NO LONGER CONSISTENT WITH THE SIDE ROAD LANE CLOSURE.
- C. ADVANCE WARNING SIGNS ARE TO BE OMITTED ON DRIVEWAY UNLESS OTHERWISE NOTED.
- D. THE TRAFFIC CONTROL AND PROTECTION FOR SIDE ROADS, INTERSECTIONS, AND DRIVEWAYS SHALL BE INCIDENTAL TO THE COST OF SPECIFIED TRAFFIC CONTROL STANDARDS OR ITEMS.

All dimensions are in millimeters (Inches) unless otherwise shown.

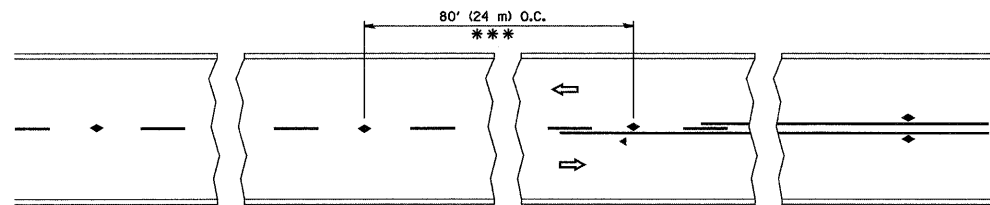
FILE NAME =	USER NAME = gaglianobt	DESIGNED - LHA	REVISED - J. OBERLE 10-18-95
W:\dstata\22x34\101.dgn		DRAWN -	REVISED - A. HOUSEH 03-06-96
	PLOT SCALE = 50.000' / IN.	CHECKED -	REVISED - A. HOUSEH 10-15-96
	PLOT DATE = 1/4/2008	DATE - 06-89	REVISED - T. RAMMACHER 01-06-00

STATE OF ILLINOIS
DEPARTMENT OF TRANSPORTATION

TRAFFIC CONTROL AND PROTECTION FOR
SIDE ROADS, INTERSECTIONS, AND DRIVEWAYS

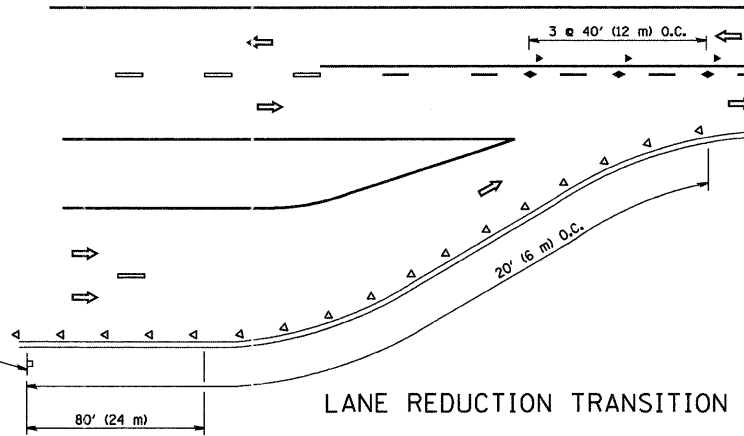
SCALE: NONE SHEET NO. 1 OF 1 SHEETS STA. TO STA.

F.A.U. RTE.	SECTION	COUNTY	TOTAL SHEETS	SHEET NO.
2937	3077-RS	COOK	24	17
TC-10			CONTRACT NO. 60H36	
FED. ROAD DIST. NO. 1 ILLINOIS FED. AID PROJECT				

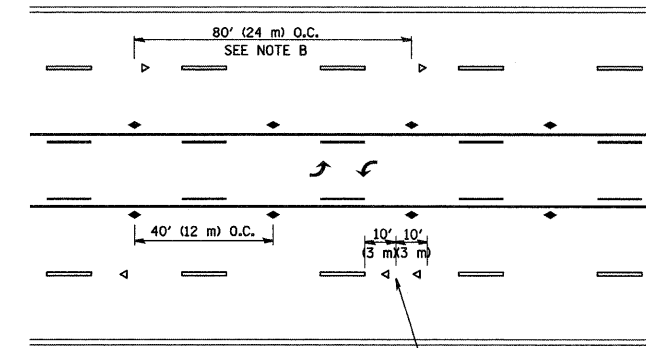


*** REDUCE TO 40' (12 m) O.C. ON CURVES WITH POSTED OR ADVISORY SPEED 45 M.P.H. (70 km/h) OR LESS.

TWO-LANE/TWO-WAY

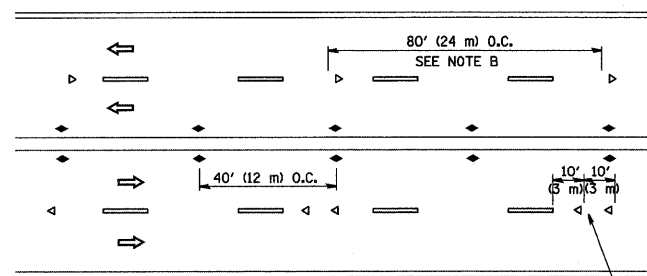


LANE REDUCTION TRANSITION



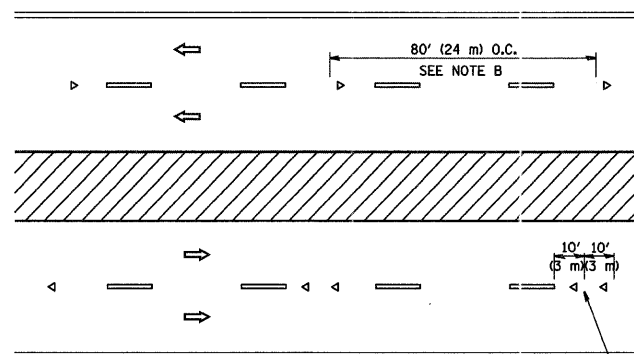
SEE NOTE A

TWO-WAY LEFT TURN



SEE NOTE A

MULTI-LANE/UNDIVIDED



SEE NOTE A

MULTI-LANE/DIVIDED

GENERAL NOTES

1. MARKERS USED WITH DASHED LINES SHALL BE CENTERED IN THE GAP BETWEEN SEGMENTS.
2. MARKERS USED ADJACENT TO SOLID LINES SHALL BE OFFSET 2 TO 3 (50 TO 75) TOWARD TRAFFIC AS SHOWN.
3. MARKERS THROUGH TANGENTS LESS THAN 500' (150 m) IN LENGTH BETWEEN CURVES SHALL BE INSTALLED AT THE LESSER OF THE TWO CURVE SPACINGS.

SYMBOLS

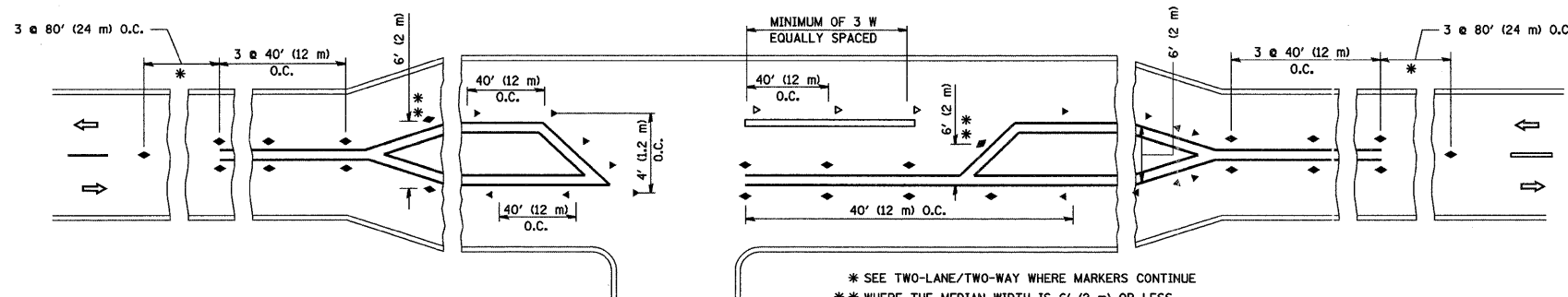
- YELLOW STRIPE
- WHITE STRIPE
- ◀ ONE-WAY AMBER MARKER
- ◀ ONE-WAY CRYSTAL MARKER (W/O)
- ◆ TWO-WAY AMBER MARKER

LANE MARKER NOTES

- A. USE DOUBLE LANE LINE MARKERS SPACED AS SHOWN.
- B. REDUCE TO 40' (12 m) O.C. ON CURVES WHERE ADVISORY SPEEDS ARE 10 M.P.H (20 km/h) LOWER THAN POSTED SPEEDS.

DESIGN NOTES

1. DOUBLE LANE LINE MARKERS SHALL BE USED UNLESS SPECIFIED OTHERWISE.
2. EXCEPT AS SHOWN ON THE LANE REDUCTION TRANSITION AND FREEWAY EXIT RAMP DETAIL, MARKERS ARE NOT TO BE SPECIFIED ON RIGHT EDGE LINES.
3. THE EXACT MARKER LIMITS, SPACING, AND COLOR SHOULD BE INCLUDED IN THE PLANS.
4. MARKERS SHOULD NOT BE USED ALONGSIDE CURBS EXCEPT FOR EXTREMELY SHORT SECTIONS OF CURBS WHERE NOT MORE THAN TWO MARKERS WOULD BE INVOLVED.

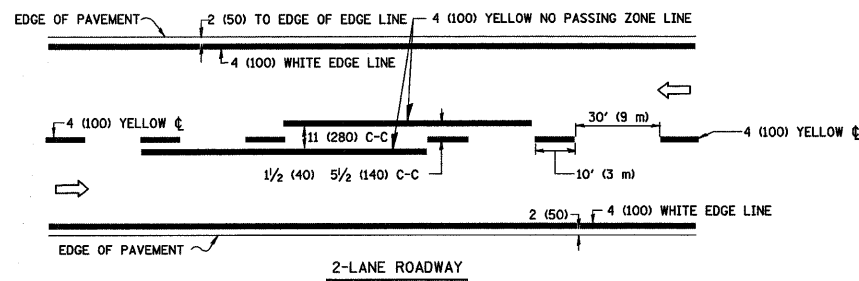


* SEE TWO-LANE/TWO-WAY WHERE MARKERS CONTINUE
 ** WHERE THE MEDIAN WIDTH IS 6' (2 m) OR LESS USE TWO-WAY MARKERS.

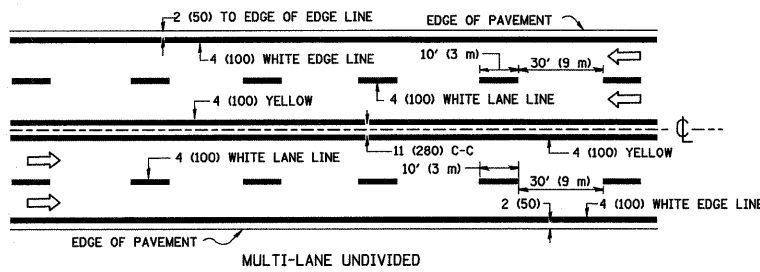
LEFT TURN

All dimensions are in inches (millimeters) unless otherwise shown.

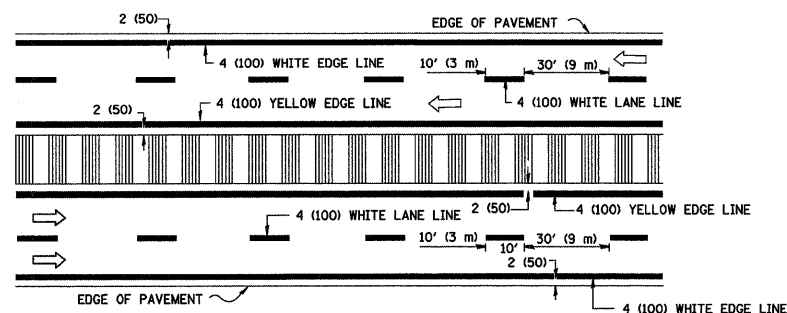
FILE NAME = W:\diststd\22x34\tcl1.dgn	USER NAME = geglianobt	DESIGNED -	REVISED - T. RAMMACHER 09-19-94	STATE OF ILLINOIS DEPARTMENT OF TRANSPORTATION	TYPICAL APPLICATIONS RAISED REFLECTIVE PAVEMENT MARKERS (SNOW-PLOW RESISTANT)			F.A.U. RTE. 2937	SECTION 3077-RS	COUNTY COOK	TOTAL SHEETS 24	SHEET NO. 18
	PLOT SCALE = 50.000' / IN.	DRAWN -	REVISED - T. RAMMACHER 03-12-99		SCALE: NONE	SHEET NO. 1 OF 1 SHEETS	STA. TO STA.	TC-11 FED. ROAD DIST. NO. 1 ILLINOIS FED. AID PROJECT				
PLOT DATE = 1/4/2008	CHECKED -	DATE -	REVISED - T. RAMMACHER 01-06-00				CONTRACT NO. 60H36					



2-LANE ROADWAY



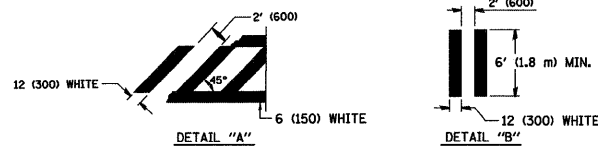
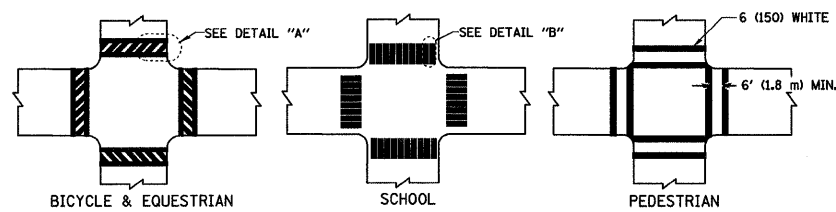
MULTI-LANE UNDIVIDED



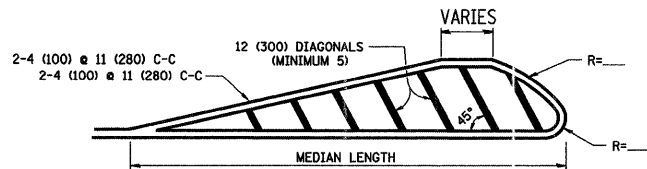
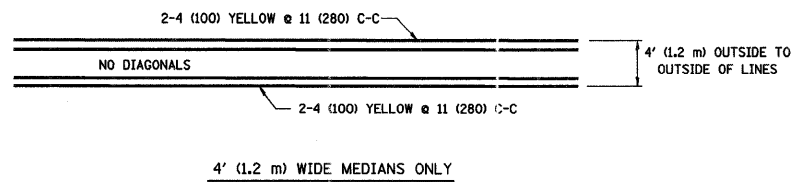
MULTI-LANE DIVIDED WITH MOUNTABLE MEDIAN

NOTE: MEDIANS WITH BARRIER CURB DO NOT REQUIRE AN EDGE LINE

TYPICAL LANE AND EDGE LINE MARKING



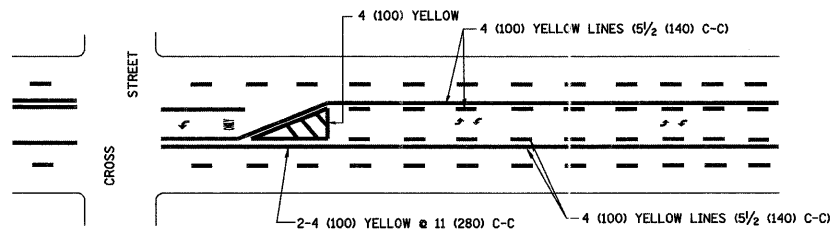
TYPICAL CROSSWALK MARKING



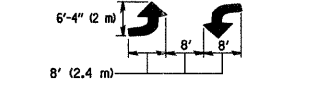
FOR MEDIAN LENGTHS WHERE DIAGONAL SPACING CANNOT BE ATTAINED, USE 5 (FIVE) EQUALLY SPACED DIAGONAL LINES.

DIAGONAL LINE SPACING: 50' (15 m) C-C (LESS THAN 30MPH (50 km/h))
75' (25 m) C-C 30MPH (50 km/h) TO 45MPH (70 km/h)
150' (45 m) C-C (MORE THAN 45MPH (70 km/h))

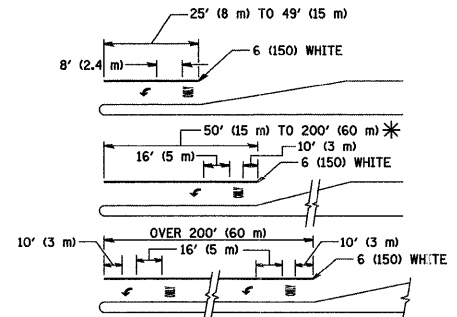
MEDIANS OVER 4' (1.2 m) WIDE



A MINIMUM OF TWO PAIRS OF TURN ARROWS SHALL BE USED, WHITE IN COLOR. ADDITIONAL PAIRS SHALL BE PLACED AT 200' (60 m) TO 300' (90 m) INTERVALS.



TYPICAL PAINTED MEDIAN MARKING

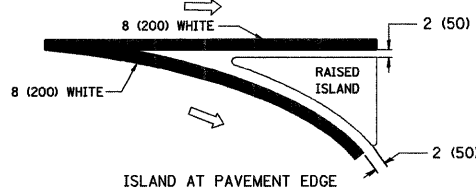
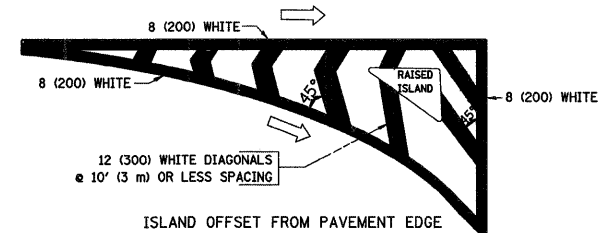


FULL SIZE LETTERS 8' (2.4 m) AND ARROWS SHALL BE USED. AREA = 15.6 SQ. FT. (1.5 m²) AREA = 20.8 SQ. FT. (1.9 m²)

* TURN LANES IN EXCESS OF 400' (120 m) IN LENGTH MAY HAVE AN ADDITIONAL SET OF ARROW - "ONLY" INSTALLED MIDWAY BETWEEN THE OTHER TWO SETS OF ARROW - "ONLY".

TYPICAL LEFT (OR RIGHT) TURN LANE

TYPICAL TURN LANE MARKING

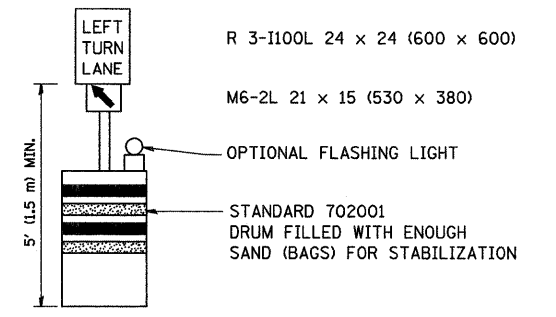
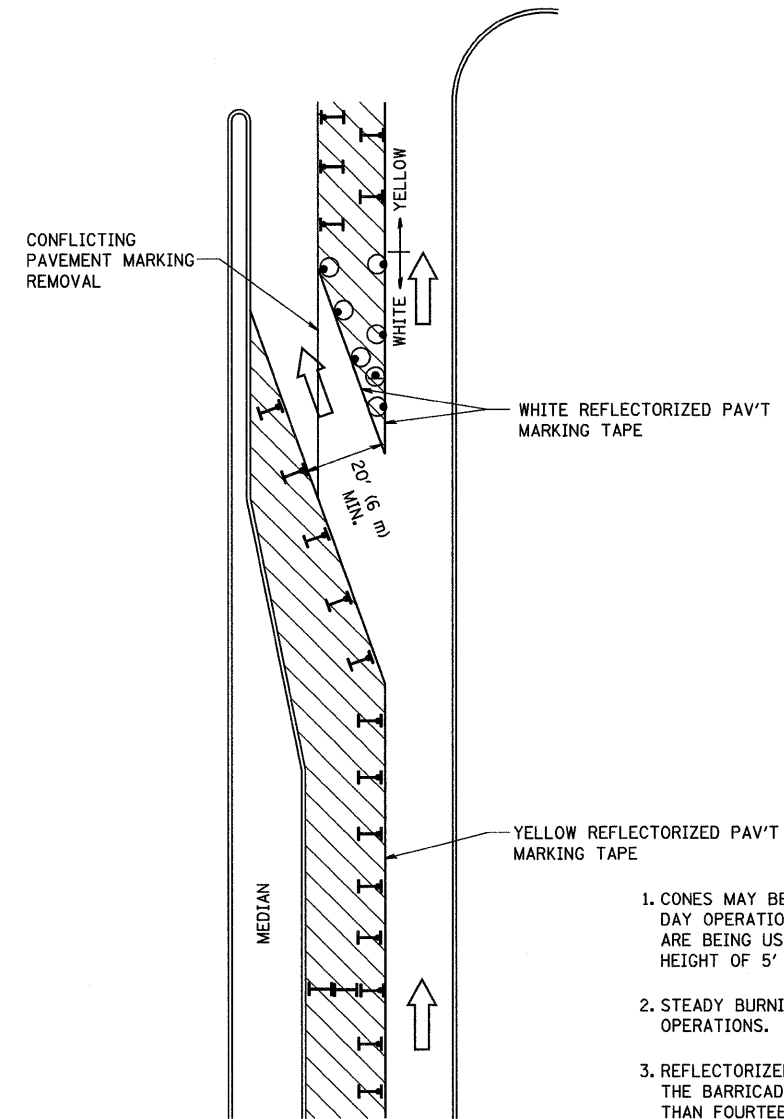


TYPICAL ISLAND MARKING

TYPE OF MARKING	WIDTH OF LINE	PATTERN	COLOR	SPACING / REMARKS
CENTERLINE ON 2 LANE PAVEMENT	4 (100)	SKIP-DASH	YELLOW	10' (3 m) LINE WITH 30' (9 m) SPACE
CENTERLINE ON MULTI-LANE UNDIVIDED PAVEMENT	2 @ 4 (100)	SOLID	YELLOW	11 (280) C-C
NO PASSING ZONE LINES FOR ONE DIRECTION	4 (100)	SOLID	YELLOW	5/2 (140) C-C FROM SKIP-DASH CENTERLINE
NO PASSING ZONE LINES FOR BOTH DIRECTIONS	2 @ 4 (100)	SOLID	YELLOW	11 (280) C-C OMIT SKIP-DASH CENTERLINE BETWEEN
LANE LINES	4 (100) 5 (125) ON FREEWAYS	SKIP-DASH SKIP-DASH	WHITE WHITE	10' (3 m) LINE WITH 30' (9 m) SPACE
DOTTED LINES (EXTENSIONS OF CENTER, LANE OR TURN LANE MARKINGS)	SAME AS LINE BEING EXTENDED	SKIP-DASH	SAME AS LINE BEING EXTENDED	2' (600) LINE WITH 6' (1.8 m) SPACE
EDGE LINES	4 (100)	SOLID	YELLOW-LEFT WHITE-RIGHT	OUTLINE MOUNTABLE MEDIANS IN YELLOW; EDGE LINES ARE NOT USED NEXT TO BARRIER CURB
TURN LANE MARKINGS	6 (150) LINE; FULL SIZE LETTERS & SYMBOLS (8' (2.4m))	SOLID	WHITE	SEE TYPICAL TURN LANE MARKING DETAIL
TWO WAY LEFT TURN MARKING	2 @ 4 (100) EACH DIRECTION	SKIP-DASH AND SOLID	YELLOW	10' (3 m) LINE WITH 30' (9 m) SPACE FOR SKIP-DASH; 5/2 (140) C-C BETWEEN SOLID LINE AND SKIP-DASH LINE
	8' (2.4m) LEFT ARROW	IN PAIRS	WHITE	SEE TYPICAL TWO-WAY LEFT TURN MARKING DETAIL
CROSSWALK LINES (PEDESTRIAN) A. DIAGONALS (BIKE & EQUESTRIAN) B. LONGITUDINAL BARS (SCHOOL)	2 @ 6 (150) 12 (300) @ 45° 12 (300) @ 90°	SOLID SOLID SOLID	WHITE WHITE WHITE	NOT LESS THAN 6' (1.8 m) APART 2' (600) APART SEE TYPICAL CROSSWALK MARKING DETAILS.
STOP LINES	24 (600)	SOLID	WHITE	PLACE 4' (1.2 m) IN ADVANCE OF AND PARALLEL TO CROSSWALK, IF PRESENT. OTHERWISE, PLACE AT DESIRED STOPPING POINT. PARALLEL TO CROSSROAD CENTERLINE, WHERE POSSIBLE
PAINTED MEDIANS	2 @ 4 (100) WITH 12 (300) DIAGONALS @ 45° NO DIAGONALS USED FOR 4' (1.2 m) WIDE MEDIANS	SOLID	YELLOW; TWO WAY TRAFFIC WHITE; ONE WAY TRAFFIC	11 (280) C-C FOR THE DOUBLE LINE SEE TYPICAL PAINTED MEDIAN MARKING.
GORE MARKING AND CHANNELIZING LINES	8 (200) WITH 12 (300) DIAGONALS @ 45°	SOLID	WHITE	DIAGONALS: 15' (4.5 m) C-C (LESS THAN 30MPH (50 km/h)) 20' (6 m) C-C 30MPH (50 km/h) TO 45MPH (70 km/h) 30' (9 m) C-C (OVER 45MPH (70 km/h))
RAILROAD CROSSING	24 (600) TRANSVERSE LINES; "RR" IS 6' (1.8 m) LETTERS; 16 (400) LINE FOR "X"	SOLID	WHITE	SEE STATE STANDARD 780001 AREA OF: "R"=3.6 SQ. FT. (0.33 m ²) EACH "X"=54.0 SQ. FT. (5.0 m ²)
SHOULDER DIAGONALS	12 (300) @ 45°	SOLID	WHITE - RIGHT YELLOW - LEFT	50' (15 m) C-C (LESS THAN 30MPH (50 km/h)) 75' (25 m) C-C (30 MPH (50 km/h) TO 45MPH (70 km/h)) 150' (45 m) C-C (OVER 45MPH (70 km/h))

FOR FURTHER DETAILS ON PAVEMENT MARKING REFER TO STANDARD SPECIFICATIONS FOR ROAD AND BRIDGE CONSTRUCTION AND STATE STANDARD 780001.

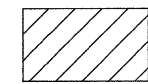
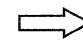
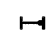


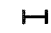
All dimensions are in inches (millimeters) unless otherwise shown.



GENERAL NOTES

1. CONES MAY BE SUBSTITUTED FOR BARRICADES OR DRUMS AT HALF THE SPACING DURING DAY OPERATIONS. CONES SHALL BE A MINIMUM OF 28 (710) IN HEIGHT. WHEN CONES ARE BEING USED, THE "LEFT TURN LANE" SIGN MAY BE SKID MOUNTED AT A MINIMUM HEIGHT OF 5' (1.5 m).
2. STEADY BURNING LIGHTS WILL NOT BE REQUIRED ON BARRICADES OR DRUMS FOR DAY OPERATIONS. ALL LIGHTS SHALL BE MONODIRECTIONAL.
3. REFLECTORIZED TEMPORARY PAVEMENT MARKING TAPE SHALL BE PLACED THROUGHOUT THE BARRICADED AREA OF EACH TURN BAY WHERE THE CLOSURE TIME IS GREATER THAN FOURTEEN DAYS.
4. THIS APPLICATION ALSO APPLIES WHEN WORK IS BEING PERFORMED IN THE RIGHT LANE(S) AND THE RIGHT TURN BAY IS TO REMAIN OPEN. UNDER THIS CONDITION, "RIGHT TURN LANE" R3-100 24 x 24 (600 x 600) AND M6-2R 21 x 15 (530 x 380) SHALL BE USED.
5. THESE CONTROLS SHALL SUPPLEMENT MAINLINE TRAFFIC CONTROL FOR LANE CLOSURES.
6. LONGITUDINAL DIMENSIONS MAY BE ADJUSTED TO FIT FIELD CONDITIONS.
7. FORM BT 725 IS REQUIRED.
8. TRAFFIC CONTROL AND PROTECTION AT TURN BAYS (TO REMAIN OPEN TO TRAFFIC) SHALL BE INCLUDED IN THE COST SPECIFIED TRAFFIC CONTROL STANDARDS OR ITEMS.

LEGEND

-  WORK AREA
-  LANE OPEN TO TRAFFIC
-  TYPE I OR II BARRICADE WITH STEADY BURN LIGHT
-  DRUM WITH STEADY BURN LIGHT
-  DRUM WITH SIGN (WITH OPTIONAL FLASHING LIGHT) SEE DETAIL
-  TYPE I OR II CHECK BARRICADE WITH FLASHING LIGHT

All dimensions are in inches (millimeters) unless otherwise shown.

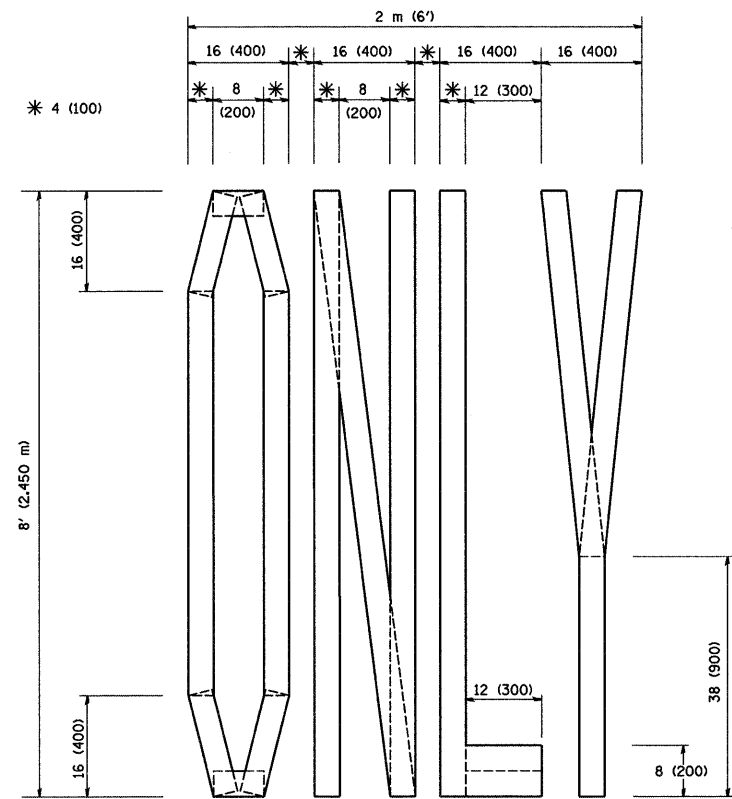
FILE NAME =	USER NAME = gegl1enobt	DESIGNED -	REVISED -T. RAMMACHER 09-08-94
W:\distatd\22x34\tcl4.dgn		DRAWN -	REVISED - A. HOUSEH 11-07-95
		PLOT SCALE = 50.0000' / IN.	REVISED - A. HOUSEH 10-12-96
		PLOT DATE = 1/4/2008	REVISED -T. RAMMACHER 01-06-00
		DATE -	

**STATE OF ILLINOIS
DEPARTMENT OF TRANSPORTATION**

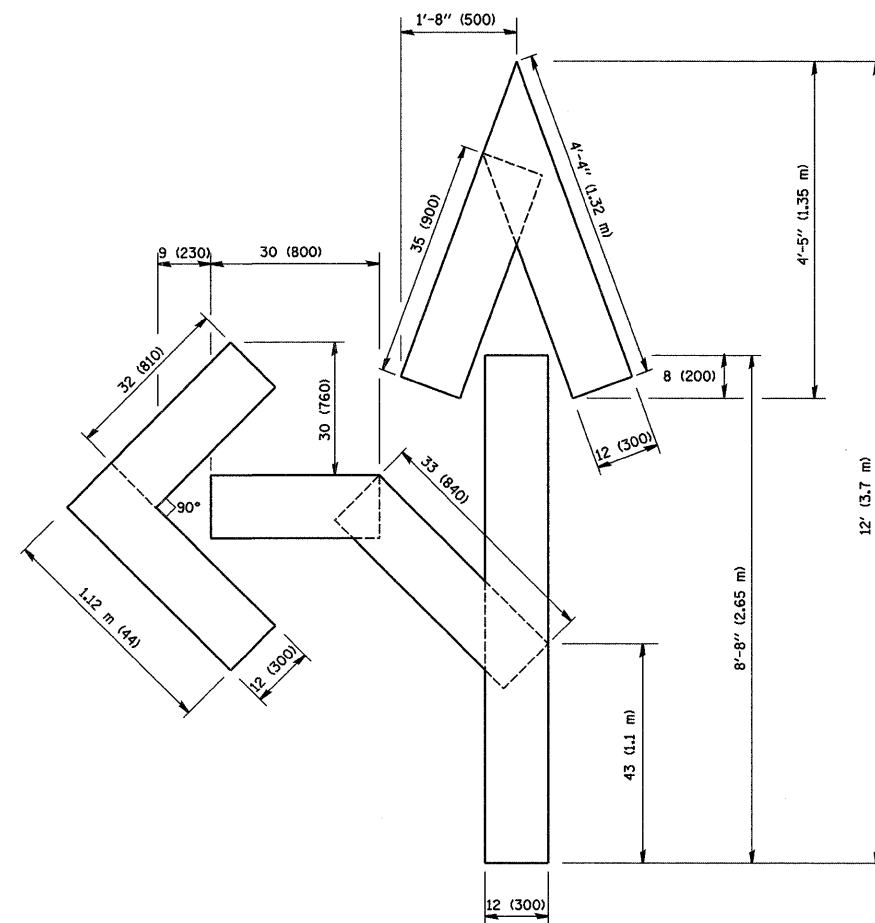
**TRAFFIC CONTROL AND PROTECTION AT TURN BAYS
(TO REMAIN OPEN TO TRAFFIC)**

SCALE: NONE	SHEET NO. 1 OF 1 SHEETS	STA. TO STA.
-------------	-------------------------	--------------

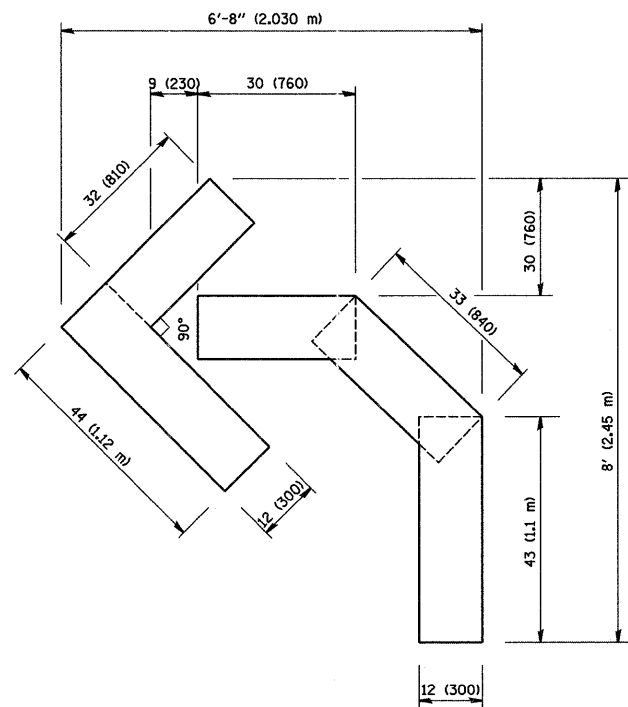
F.A.U. RTE.	SECTION	COUNTY	TOTAL SHEETS	SHEET NO.
2937	3077-RS	COOK	24	20
TC-14			CONTRACT NO. 60H36	
FED. ROAD DIST. NO. 1 ILLINOIS FED. AID PROJECT				



QUANTITY
 4 (100) LINE = 64.1 ft. (19.7 m)
 21.1 sq. ft. (1.97 sq. m)



QUANTITY
 4 (100) LINE = 82.5 ft. (25.3 m)
 27.5 sq. ft. (2.53 sq. m)



QUANTITY
 4 (100) LINE = 45.5 ft. (13.9 m)
 15.2 sq. ft. (1.39 sq. m)

All dimensions are in Inches (millimeters) unless otherwise shown.

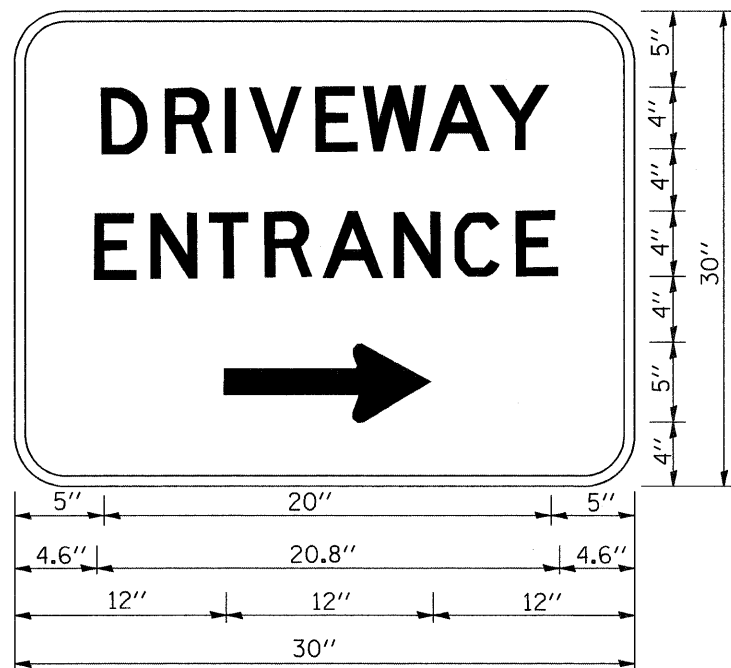
FILE NAME = W:\distatd\22x34\td16.dgn	USER NAME = geglienobt	DESIGNED -	REVISED -T. RAMMACHER 06-05-96
		DRAWN -	REVISED -T. RAMMACHER 11-04-97
	PLOT SCALE = 50.0000' / IN.	CHECKED -	REVISED -T. RAMMACHER 03-02-98
	PLOT DATE = 1/4/2008	DATE - 09-18-94	REVISED -E. GOMEZ 08-28-00

STATE OF ILLINOIS
 DEPARTMENT OF TRANSPORTATION

PAVEMENT MARKING LETTERS AND SYMBOLS
 FOR TRAFFIC STAGING

SCALE: NONE SHEET NO. 1 OF 1 SHEETS STA. TO STA.

F.A.U. RTE. 2937	SECTION 3077-RS	COUNTY COOK	TOTAL SHEETS 24	SHEET NO. 21
TC-16			CONTRACT NO. 60H36	
FED. ROAD DIST. NO. 1 ILLINOIS FED. AID PROJECT				



3.0" RADIUS, 0.5" BORDER, WHITE ON GREEN; REFLECTORIZED
 "DRIVEWAY" D; "ENTRANCE" D; STANDARD ARROW CUSTOM 12.0" x 5.0"

NOTES:

1. HALF OF THE SIGNS WILL REQUIRE A LEFT HAND FACING ARROW.
2. TWO SIGNS SHALL BE USED AT EACH COMMERCIAL ENTRANCE PLACED BACK-TO-BACK; ONE WITH A RIGHT HAND ARROW (SHOWN) SHALL BE PLACED ON THE NEAR RIGHT SIDE THE DRIVEWAY AND ONE WITH A LEFT HAND ARROW SHALL BE PLACED ON THE FAR LEFT SIDE OF THE DRIVEWAY.
3. SIGNS TO BE PAID FOR AS ITEM "TEMPORARY INFORMATION SIGNING".

FILE NAME = W:\distatd\22x34\to26.dgn	USER NAME = gaglienobt	DESIGNED -	REVISED - C. JUCIUS 02-15-07	STATE OF ILLINOIS DEPARTMENT OF TRANSPORTATION	DRIVEWAY ENTRANCE SIGNING			F.A.U. RTE. 2937	SECTION 3077-RS	COUNTY COOK	TOTAL SHEETS 24	SHEET NO. 23
	PLOT SCALE = 50.000' / IN.	CHECKED -	REVISED -					TC-26			CONTRACT NO. 60H36	
PLOT DATE = 1/4/2008	DATE -	REVISED -		SCALE: NONE	SHEET NO. 1 OF 1 SHEETS	STA.	TO STA.	FED. ROAD DIST. NO. 1 ILLINOIS FED. AID PROJECT				

