

F.A.P. RTE.	SECTION	COUNTY	TOTAL SHEETS	SHEET NO.
372	2009-055 RS	COOK	25	1
FED. ROAD DIST. NO. 1	ILLINOIS	CONTRACT NO.	60H39	

STATE OF ILLINOIS
DEPARTMENT OF TRANSPORTATION
DIVISION OF HIGHWAYS

**PROPOSED
HIGHWAY PLANS**

F.A.P. 372 (IL 171/THATCHER AVENUE)

SECTION: 2009-055 RS

**DES PLAINES RIVER ROAD TO NORTH OF FOREST PRESERVE DRIVE
RESURFACING (3P)**

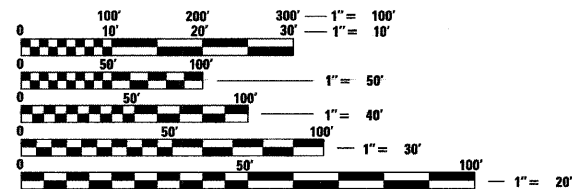
**COOK COUNTY
C-91-609-09**

FOR INDEX OF SHEETS, SEE SHEET NO. 2

THESE IMPROVEMENTS ARE LOCATED WITHIN
THE VILLAGE OF RIVER GROVE AND THE CITY OF CHICAGO

TRAFFIC DATA

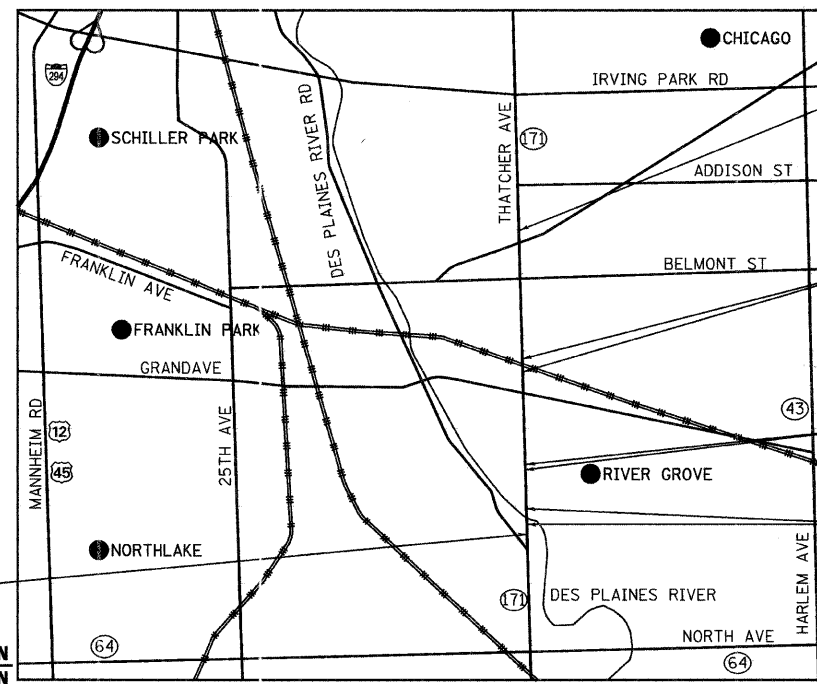
2006 ADT - 36,800
POSTED SPEED LIMIT - 40MPH



FULL SIZE PLANS HAVE BEEN PREPARED USING STANDARD
ENGINEERING SCALES. REDUCED SIZED PLANS WILL NOT
CONFORM TO STANDARD SCALES. IN MAKING MEASUREMENTS
ON REDUCED PLANS, THE ABOVE SCALES MAY BE USED.

J.U.L.I.E.
JOINT UTILITY LOCATION INFORMATION FOR EXCAVATION
1-800-892-0123
OR 811

BEGIN PROJECT
STA. 108+10



END PROJECT
STA. 194+34

STA. 154+05
OMISSION
STA. 154+80

~~STA. 116+33
OMISSION
STA. 116+77~~

STA. 109+00
OMISSION
STA. 113+44

Ciorba Group, Inc.

DESIGN FIRM
REGISTRATION NUMBER

184-001016

CONSULTING ENGINEERS
SUITE 402, 5507 NORTH CUMBERLAND AVE
CHICAGO, ILLINOIS 60656 ☎ (773) 775-4009

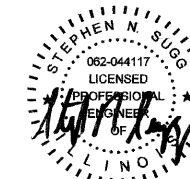
LEYDEN TOWNSHIP

LOCATION MAP

1" = 2,500'

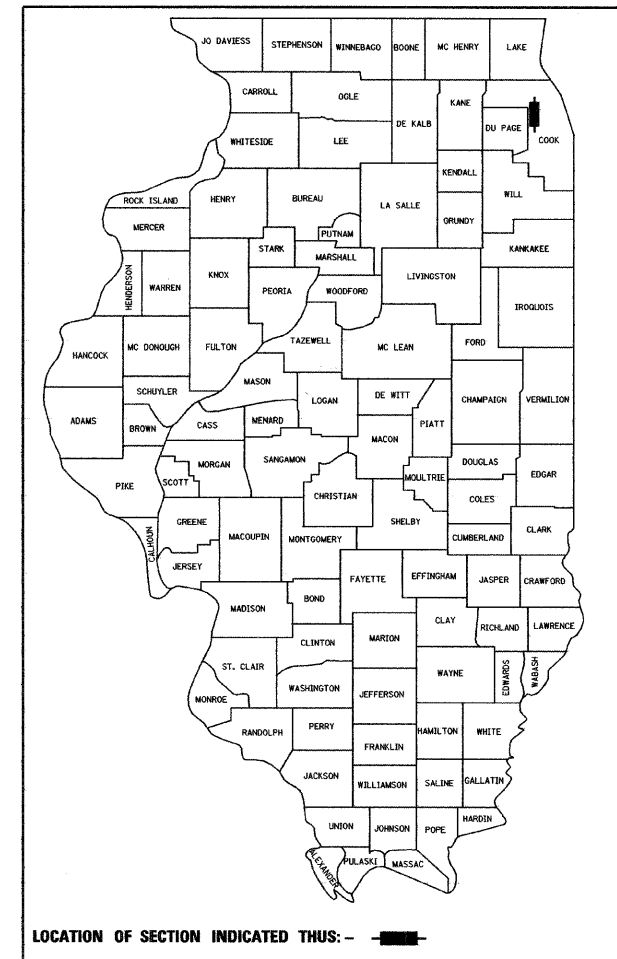
GROSS LENGTH OF PROJECT = 8,624 FT = 1.63 MI.

NET LENGTH OF PROJECT = 8,105 FT = 1.54 MI.



DATE: 4/13/2009
SEAL EXPIRES: 11/30/2009

D-91-609-09



LOCATION OF SECTION INDICATED THUS: - [thick black line] -

STATE OF ILLINOIS
DEPARTMENT OF TRANSPORTATION
DIVISION OF HIGHWAYS

SUBMITTED APRIL 14, 2009

Diana M. C. Murphy
DEPUTY DIRECTOR OF HIGHWAYS, REGION ENGINEER

May 1, 2009
Charles S. Ingersoll
ENGINEER OF DESIGN AND ENVIRONMENT

May 1, 2009
Christina M. Reed
DIRECTOR OF HIGHWAYS, CHIEF ENGINEER

**PRINTED BY THE AUTHORITY
OF THE STATE OF ILLINOIS**

DISTRICT 1 DESIGN PLAN PREPARATION ENGINEER: K. ENG (847)705-4247

CONTRACT NO. 60H39