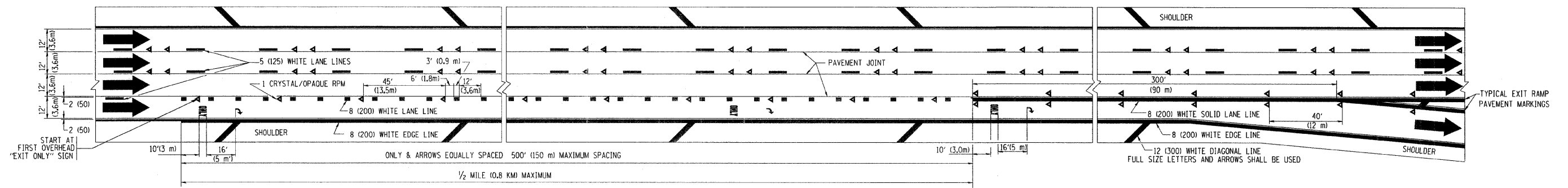
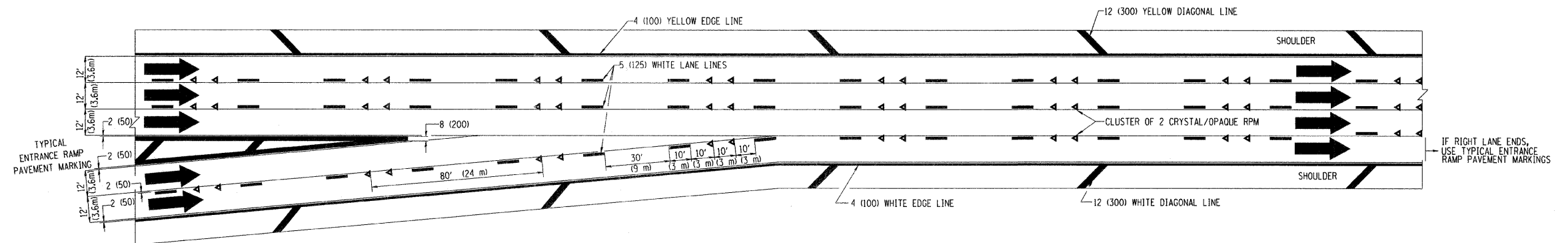


**TYPICAL ENTRANCE/EXIT RAMP COMBINATION PAVEMENT MARKINGS**



**TYPICAL EXIT ONLY LANE PAVEMENT MARKINGS**



**TYPICAL TWO LANE ENTRANCE RAMP PAVEMENT MARKINGS**

FILE NAME =  
W:\diets\td\22x34\tcl2.dgn

USER NAME = goglianobt  
PLOT SCALE = 50,000 / IN.  
PLOT DATE = 1/4/2008

DESIGNED - D.W.S.  
DRAWN -  
CHECKED -  
DATE - 01-90

REVISED - A.H. 03-96  
REVISED - D.W.S. 07-96  
REVISED - J.A.F. 02-06  
REVISED - S.P.B. 01-07

**STATE OF ILLINOIS  
DEPARTMENT OF TRANSPORTATION**

**MULTI-LANE FREEWAY  
PAVEMENT MARKING DETAILS**  
SCALE: NONE SHEET NO. 2 OF 2 SHEETS STA. TO STA.

F.A.P. RTE. 373	SECTION 2009-053 RS	COUNTY COOK	TOTAL SHEETS 20	SHEET NO. 15
TC-12		CONTRACT NO. 60H41		
FED. ROAD DIST. NO. 1 ILLINOIS FED. AID PROJECT				