

C.H.	SECTION	COUNTY	TOTAL SHEETS	SHEET NO.
92	2002-014 RS	COOK	26	1
FED. ROAD DIST. NO. 1		ILLINOIS	CONTRACT NO. 62381	

STATE OF ILLINOIS
DEPARTMENT OF TRANSPORTATION
DIVISION OF HIGHWAYS

**PROPOSED
HIGHWAY PLANS**

CH 92 (FOREST WAY DRIVE)
SECTION: 2002-014 RS
WILLOW ROAD TO DUNDEE ROAD
RESURFACING (3P)

FOR INDEX OF SHEETS, SEE SHEET NO. 2

DESIGN DESIGNATION:
SPEED LIMIT : 30 M.P.H. AND 40 M.P.H.
2007 ADT = 2,350

PROJECT IS LOCATED IN THE
VILLAGE OF GLENCOE AND THE
VILLAGE OF WINNETKA

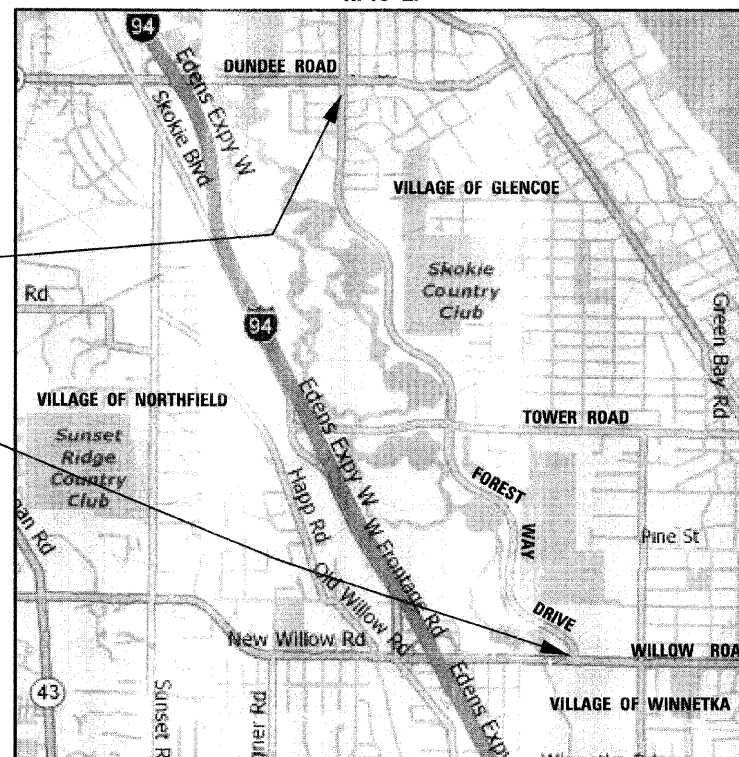
D-91-031-02



LOCATION OF SECTION INDICATED THIS: - [Symbol] -

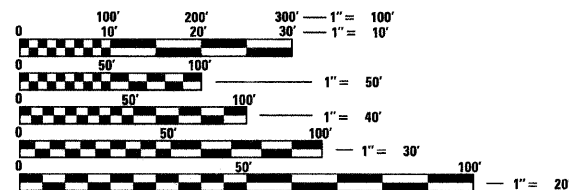
COOK COUNTY
C-91-031-02

NEW TRIER TOWNSHIP
R. 13 E.



PROJECT ENDS
STA. 156 + 78

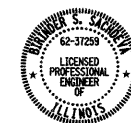
PROJECT BEGINS
STA. 4 + 45



FULL SIZE PLANS HAVE BEEN PREPARED USING STANDARD
ENGINEERING SCALES. REDUCED SIZED PLANS WILL NOT
CONFORM TO STANDARD SCALES. IN MAKING MEASUREMENTS
ON REDUCED PLANS, THE ABOVE SCALES MAY BE USED.

J.U.L.I.E.
JOINT UTILITY LOCATING INFORMATION FOR EXCAVATORS
1-800-892-0123
OR 811

GROSS LENGTH OF PROJECT = 15,233 FEET = 2.885 MILES
NET LENGTH OF PROJECT = 15,233 FEET = 2.885 MILES



Birinder S. Sachdeva
BIRINDER S. SACHDEVA, P.E.
EXPIRES: 11-30-2009
March 23, 2009
DATE

PRINTED BY THE AUTHORITY
OF THE STATE OF ILLINOIS

DISTRICT ONE - PLAN PREP ENGINEER: KEN ENG (847) 705-4247

CHRISTIAN-ROGE & ASSOCIATES, INC.
ENGINEERS - PLANNERS - SURVEYORS
211 W. WACKER DRIVE CHICAGO, IL. 60606
TELEPHONE: 312-372-2023

CONTRACT NO. 62381