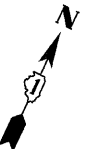


MATCH LINE STA. 248+00  
SEE SHEET 9

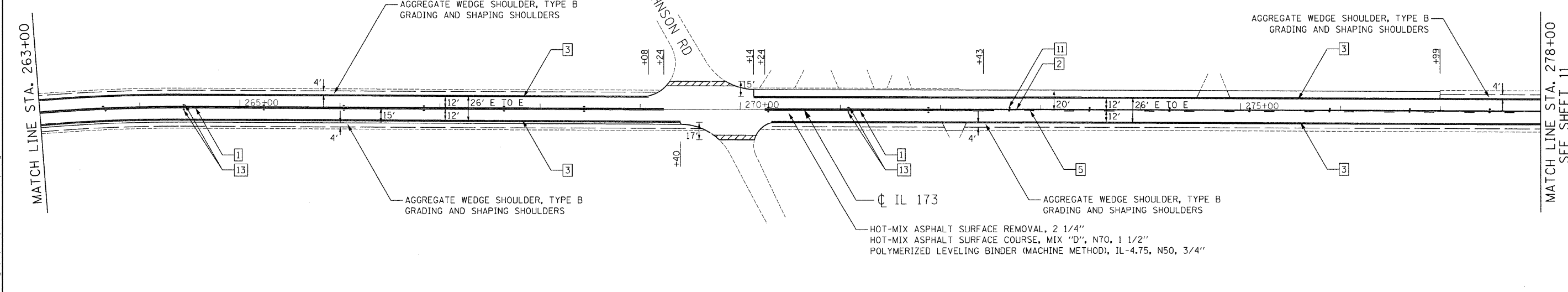


MATCH LINE STA. 263+00  
SEE SHEET 10

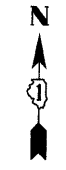
**LEGEND:**

- |   |   |    |   |
|---|---|----|---|
| 1 | THERMOPLASTIC PAVEMENT MARKING - LINE 4" (DOUBLE YELLOW SOLID LINE 11" C-C)   | 7  | THERMOPLASTIC PAVEMENT MARKING - LINE 12" (YELLOW DIAGONAL LINE)      |
| 2 | THERMOPLASTIC PAVEMENT MARKING - LINE 4" (YELLOW SOLID LINE)  | 8  | THERMOPLASTIC PAVEMENT MARKING - LINE 24" (WHITE STOP LINE)           |
| 3 | THERMOPLASTIC PAVEMENT MARKING - LINE 4" (WHITE EDGE LINE)  | 9  | THERMOPLASTIC PAVEMENT MARKING - LETTERS AND SYMBOLS (TYP.)           |
| 4 | THERMOPLASTIC PAVEMENT MARKING - LINE 4" (YELLOW LANE LINE - 10' DASH, 30' SKIP) WITH RAISED REFLECTIVE PAVEMENT MARKERS (1 TWO-WAY AMBER MARKER) (40' C-C) | 10 | RAISED REFLECTIVE PAVEMENT MARKERS (ONE-WAY AMBER MARKER) (40' C-C)   |
| 5 | THERMOPLASTIC PAVEMENT MARKING - LINE 4" (YELLOW LANE LINE - 10' DASH, 30' SKIP) WITH RAISED REFLECTIVE PAVEMENT MARKERS (1 TWO-WAY AMBER MARKER) (80' C-C) | 11 | RAISED REFLECTIVE PAVEMENT MARKERS (ONE-WAY AMBER MARKER) (80' C-C)   |
| 6 | THERMOPLASTIC PAVEMENT MARKING - LINE 6" (WHITE SOLID LINE)   | 12 | RAISED REFLECTIVE PAVEMENT MARKERS (TWO-WAY AMBER MARKER) (40' C-C)   |
|   |   | 13 | RAISED REFLECTIVE PAVEMENT MARKERS (TWO-WAY AMBER MARKER) (80' C-C)   |
|   |   | 14 | RAISED REFLECTIVE PAVEMENT MARKERS (ONE-WAY CRYSTAL MARKER) (40' C-C) |

HOT-MIX ASPHALT SURFACE REMOVAL - BUTT JOINT  
TEMPORARY RAMP



MATCH LINE STA. 263+00  
SEE SHEET 10



MATCH LINE STA. 278+00  
SEE SHEET 11

HOT-MIX ASPHALT SURFACE REMOVAL - BUTT JOINT  
TEMPORARY RAMP

FILE NAME: s:\projects\33586\21\pav\pav\pav.dwg

**Ciorba Group, Inc.**  
CONSULTING ENGINEERS  
8507 North Cumberland Avenue, Suite 402  
Chicago, Illinois 60656  
Tel. 773.775.4009 Fax 773.775.4014

USER NAME = oia	DESIGNED - DD	REVISED -
DRAWN - RJR	REVISOR -	
CHECKED - SNS	DATE - 4/22/09	

**STATE OF ILLINOIS  
DEPARTMENT OF TRANSPORTATION**

**IL 173  
ALDEN ROAD TO US 12  
PROPOSED ROADWAY AND PAVEMENT MARKING PLAN**  
SCALE: 1"=50' SHEET NO. 10 OF 36 SHEETS STA. 248+00 TO STA. 278+00

F.A.P. RTE.	SECTION	COUNTY	TOTAL SHEETS	SHEET NO.
303	(132, 133 & 134) RS-5	MCHENRY	36	10
CONTRACT NO. 62496				

FED. ROAD DIST. NO. 1 ILLINOIS FED. AID PROJECT