

F.A.P. RTE.	SECTION	COUNTY	TOTAL SHEETS	SHEET NO.
876	(9Y&10)RS-5	WILL	23	1
FED. ROAD DIST. NO. 1		ILLINOIS	CONTRACT NO. 62657	

STATE OF ILLINOIS
DEPARTMENT OF TRANSPORTATION
DIVISION OF HIGHWAYS

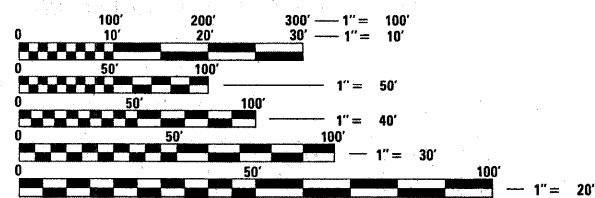
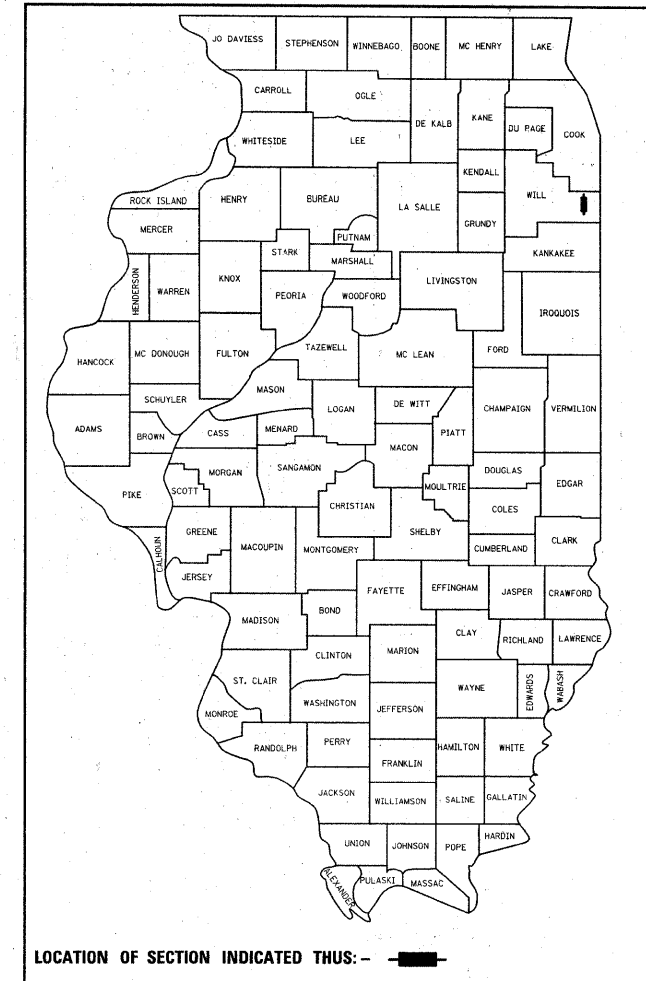
**PROPOSED
HIGHWAY PLANS**

F.A.P. ROUTE 876: IL 1 (MAIN ST/S. DIXIE HIGHWAY)
BURVILLE ROAD TO ELMSCOURT ROAD
SECTION: (9Y&10)RS-5
RESURFACING
WILL COUNTY
C-91-018-04

FOR INDEX OF SHEETS, SEE SHEET NO.

IMPROVEMENT IS LOCATED IN THE
VILLAGE OF CRETE

D-91-018-04

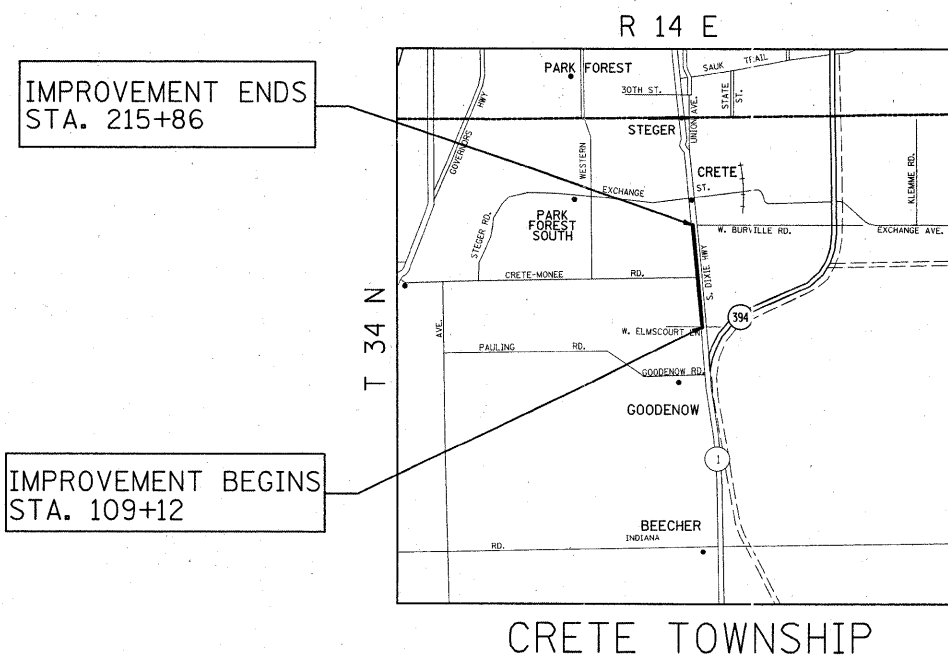


FULL SIZE PLANS HAVE BEEN PREPARED USING STANDARD ENGINEERING SCALES. REDUCED SIZED PLANS WILL NOT CONFORM TO STANDARD SCALES. IN MAKING MEASUREMENTS ON REDUCED PLANS, THE ABOVE SCALES MAY BE USED.

J.U.I.E.
JOINT UTILITY LOCATION INFORMATION FOR EXCAVATION
1-800-892-0123
OR 811

PROJECT ENGINEER: LONG TRAN
PROJECT MANAGER: KEN ENG

CONTRACT NO. 62657



TRAFFIC DATA
SPEED LIMIT: 45 MPH
2007 ADT: 9,700

STATE OF ILLINOIS
DEPARTMENT OF TRANSPORTATION
DIVISION OF HIGHWAYS

SUBMITTED APRIL 14, 2009
Diana M. O'Hara DEPUTY DIRECTOR OF HIGHWAYS, REGION ENGINEER
May 1, 2009
Charles J. Ingersoll ENGINEER OF DESIGN AND ENVIRONMENT
May 1, 2009
Christine M. Reed DIRECTOR OF HIGHWAYS, CHIEF ENGINEER

**PRINTED BY THE AUTHORITY
OF THE STATE OF ILLINOIS**

GROSS LENGTH OF IMPROVEMENT = 10,674 FEET (2.02 MILES)
NET LENGTH OF IMPROVEMENT = 10,674 FEET (2.02 MILES)