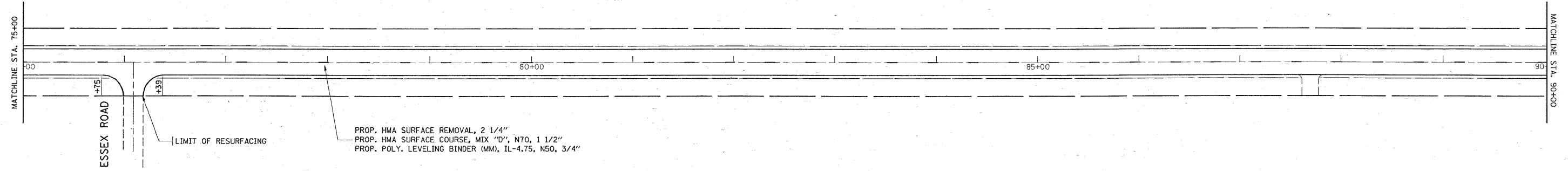
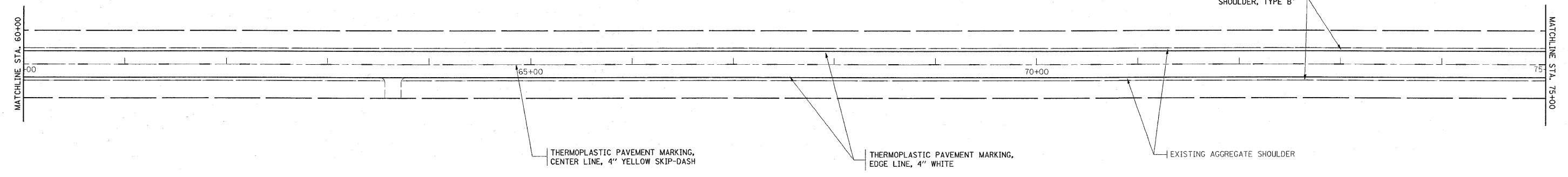


IL. RTE. 113



- NOTE:**
1. ALL PAVEMENT MARKING SHALL BE THERMOPLASTIC UNLESS OTHERWISE NOTED. SEE DISTRICT DETAIL TC-13.
  2. RAISED REFLECTIVE PAVEMENT MARKERS SHALL BE USED THROUGHOUT THE IMPROVEMENT LIMITS. DOUBLE LANE LINE MARKERS SHALL BE INSTALLED, SEE DIST. DETAIL TC-11.

FILE NAME =	USER NAME = sm:thkl	DESIGNED -	REVISED -
es:\pwork\pwork\DOT\SMITHKL\ad0138847\0106	04-shtr-plan.dgn	DRAWN -	REVISED -
	PLOT SCALE = 50.0000' / IN.	CHECKED -	REVISED -
	PLOT DATE = 4/21/2009	DATE -	REVISED -

**STATE OF ILLINOIS  
DEPARTMENT OF TRANSPORTATION**

**IL. RTE. 113 (IL RTE 53 TO RIVER ST. & N. OF HORSE CREEK TO GRANT ST.)  
PROPOSED ROADWAY & PAVEMENT MARKING PLAN**

F.A.S. RTE. 2380/ 289	SECTION	COUNTY	TOTAL SHEETS	SHEET NO.
	43RS-1	WILL	21	8
CONTRACT NO. 62688				
ILLINOIS FED. AID PROJECT				

SCALE: SHEET NO. OF SHEETS STA. TO STA.