

F.A.S. RTE.	SECTION	COUNTY	TOTAL SHEETS	SHEET NO.
250	(71,72)RS-6	LASALLE	12	1
ILLINOIS		CONTRACT NO. 66969		

STATE OF ILLINOIS
DEPARTMENT OF TRANSPORTATION
DIVISION OF HIGHWAYS
**PROPOSED
HIGHWAY PLANS**

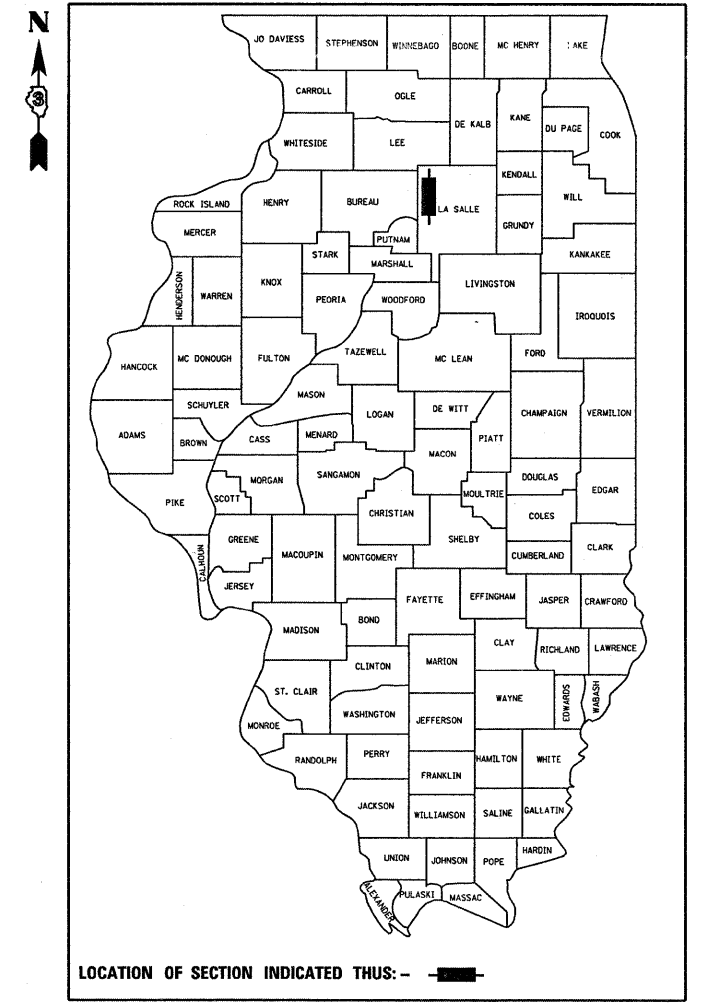
FAS 250 (IL 251)
SECTION (71,72)RS-6

**3P MILLING AND RESURFACING
LASALLE COUNTY**

C-93-120-09

SOUTH OF N 31ST RD IN PERU TO
SOUTH OF BURLINGTON NORTHERN RR IN MENDOTA

D-93-055-09



LOCATION OF SECTION INDICATED THUS: - ■ -

FUNCTION CLASSIFICATION
RURAL OTHER PRINCIPAL ARTERIAL
2009 ADT = 5,300
P.V. = 89% S.U. = 5% M.U. = 6%

STATE OF ILLINOIS
DEPARTMENT OF TRANSPORTATION
DIVISION OF HIGHWAYS

SUBMITTED _____ 20 _____

George Dugan
DEPUTY DIRECTOR OF HIGHWAYS, REGION ENGINEER

May 1, 20 09
Charles G. Dragersoll
ENGINEER OF DESIGN AND ENVIRONMENT

May 1, 20 09
Christine M. Reed
DIRECTOR OF HIGHWAYS, CHIEF ENGINEER

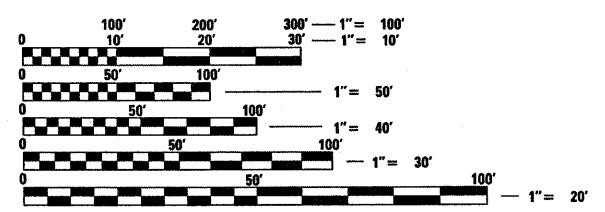
**PRINTED BY THE AUTHORITY
OF THE STATE OF ILLINOIS**

INDEX OF SHEETS

1	COVER SHEET
2	GENERAL NOTES
3	SUMMARY OF QUANTITIES
4	TYPICAL SECTIONS
5	SCHEDULES
6	TIE POINTS
7	PROJECT LAYOUT
8-12	DETAILS

STANDARDS

000001-05	STANDARD SYMBOLS, ABBREVIATIONS AND PATTERNS
001006	DECIMAL OF AN INCH AND OF A FOOT
667101-01	PERMANENT SURVEY MARKERS
701301-03	LANE CLOSURE, 2L, 2W, SHORT TIME OPERATIONS
701306-02	LANE CLOSURE, 2L, 2W, SLOW MOVING OPERATIONS DAY ONLY, FOR SPEEDS ≥ 45 MPH
701311-03	LANE CLOSURE, 2L, 2W, MOVING OPERATIONS - DAY ONLY
701901-01	TRAFFIC CONTROL DEVICES
780001-02	TYPICAL PAVEMENT MARKINGS
781001-03	TYPICAL APPLICATIONS RAISED REFLECTIVE PAVEMENT MARKERS

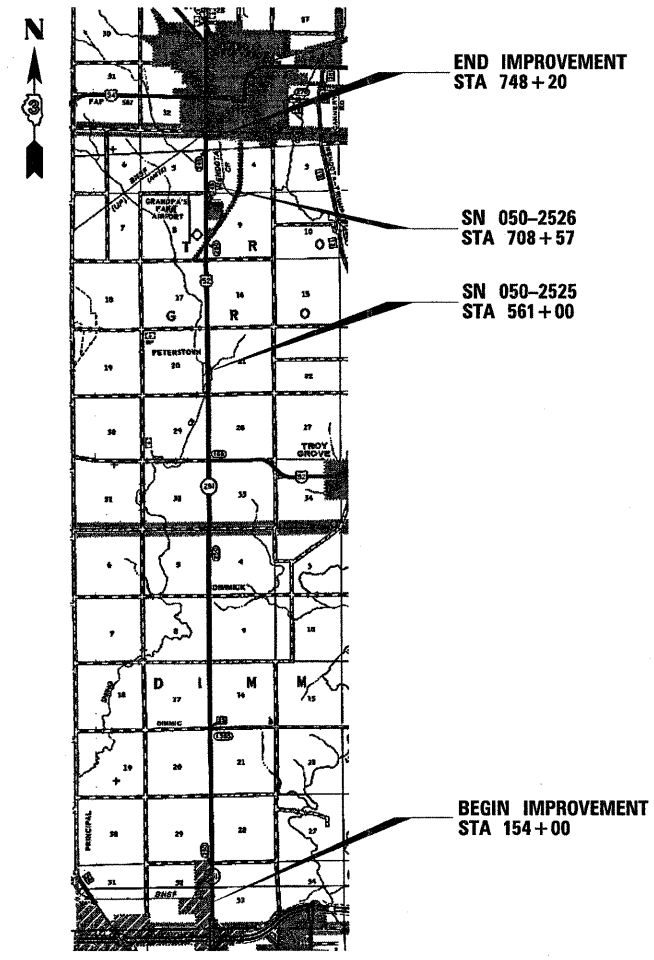


FULL SIZE PLANS HAVE BEEN PREPARED USING STANDARD ENGINEERING SCALES. REDUCED SIZED PLANS WILL NOT CONFORM TO STANDARD SCALES. IN MAKING MEASUREMENTS ON REDUCED PLANS, THE ABOVE SCALES MAY BE USED.

J.U.L.I.E.
JOINT UTILITY LOCATION INFORMATION FOR EXCAVATION
1-800-892-0123
OR 811

PROJECT ENGINEER: JOE KANNEL
UNIT CHIEF: MICHELE LINDEMANN

CONTRACT NO. 66969



GROSS LENGTH = 59420 FT. = 11.254 MILE
NET LENGTH = 59420 FT. = 11.254 MILE