

F.A.S. RTE.	SECTION	COUNTY	TOTAL SHEETS	SHEET NO.
250	(71,72)RS-6	LASALLE	12	1
ILLINOIS		CONTRACT NO. 66969		

STATE OF ILLINOIS
DEPARTMENT OF TRANSPORTATION
DIVISION OF HIGHWAYS
**PROPOSED
HIGHWAY PLANS**

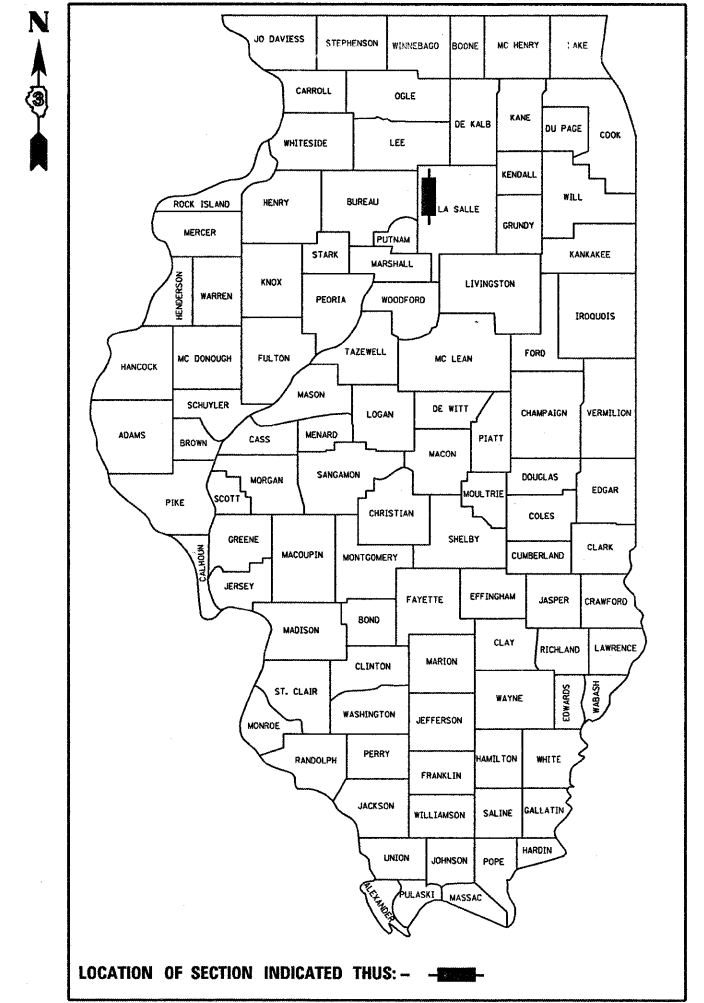
FAS 250 (IL 251)
SECTION (71,72)RS-6

**3P MILLING AND RESURFACING
LASALLE COUNTY**

C-93-120-09

SOUTH OF N 31ST RD IN PERU TO
SOUTH OF BURLINGTON NORTHERN RR IN MENDOTA

D-93-055-09



LOCATION OF SECTION INDICATED THUS: - [rectangle] -

FUNCTION CLASSIFICATION
RURAL OTHER PRINCIPAL ARTERIAL
2009 ADT = 5,300
P.V. = 89% S.U. = 5% M.U. = 6%

STATE OF ILLINOIS
DEPARTMENT OF TRANSPORTATION
DIVISION OF HIGHWAYS

SUBMITTED _____ 20 _____

George Dugan
DEPUTY DIRECTOR OF HIGHWAYS, REGION ENGINEER

May 1, 20 09
Charles G. Dragersoll
ENGINEER OF DESIGN AND ENVIRONMENT

May 1, 20 09
Christine M. Reed
DIRECTOR OF HIGHWAYS, CHIEF ENGINEER

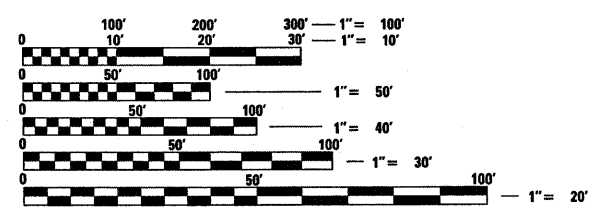
**PRINTED BY THE AUTHORITY
OF THE STATE OF ILLINOIS**

INDEX OF SHEETS

1	COVER SHEET
2	GENERAL NOTES
3	SUMMARY OF QUANTITIES
4	TYPICAL SECTIONS
5	SCHEDULES
6	TIE POINTS
7	PROJECT LAYOUT
8-12	DETAILS

STANDARDS

000001-05	STANDARD SYMBOLS, ABBREVIATIONS AND PATTERNS
001006	DECIMAL OF AN INCH AND OF A FOOT
667101-01	PERMANENT SURVEY MARKERS
701301-03	LANE CLOSURE, 2L, 2W, SHORT TIME OPERATIONS
701306-02	LANE CLOSURE, 2L, 2W, SLOW MOVING OPERATIONS DAY ONLY, FOR SPEEDS ≥ 45 MPH
701311-03	LANE CLOSURE, 2L, 2W, MOVING OPERATIONS - DAY ONLY
701901-01	TRAFFIC CONTROL DEVICES
780001-02	TYPICAL PAVEMENT MARKINGS
781001-03	TYPICAL APPLICATIONS RAISED REFLECTIVE PAVEMENT MARKERS

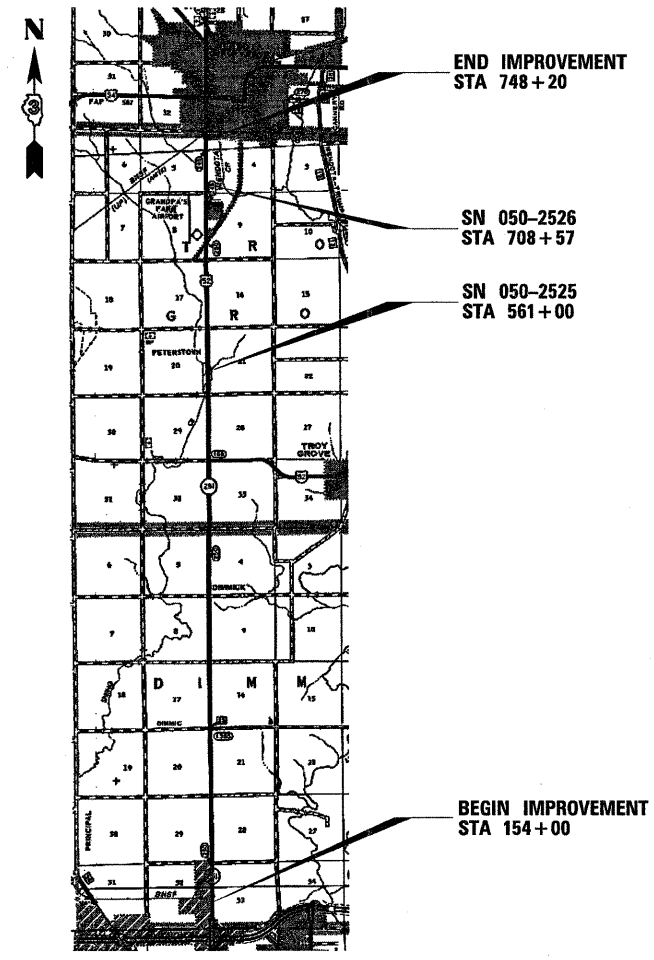


FULL SIZE PLANS HAVE BEEN PREPARED USING STANDARD ENGINEERING SCALES. REDUCED SIZED PLANS WILL NOT CONFORM TO STANDARD SCALES. IN MAKING MEASUREMENTS ON REDUCED PLANS, THE ABOVE SCALES MAY BE USED.

J.U.L.I.E.
JOINT UTILITY LOCATION INFORMATION FOR EXCAVATION
1-800-892-0123
OR 811

PROJECT ENGINEER: JOE KANNEL
UNIT CHIEF: MICHELE LINDEMANN

CONTRACT NO. 66969



GROSS LENGTH = 59420 FT. = 11.254 MILE
NET LENGTH = 59420 FT. = 11.254 MILE

GENERAL NOTES

THE THICKNESS OF HMA SHOWN ON THE PLANS IS THE NOMINAL THICKNESS. DEVIATIONS FROM THE NOMINAL THICKNESS WILL BE PERMITTED WHEN SUCH DEVIATIONS OCCUR DUE TO IRREGULARITIES IN THE EXISTING SURFACE OR BASE ON WHICH THE HMA IS PLACED.

THE ENGINEER WILL BE THE SOLE JUDGE CONCERNING CURING TIME FOR THE VARIOUS HMA LIFTS.

ENTRANCES AND SIDEROADS WILL NOT BE MILLED AND RESURFACED AS PART OF THIS IMPROVEMENT WITH THE EXCEPTION OF US 52. US 52 WILL BE MILLED AND RESURFACED BACK TO THE CONSTRUCTION JOINT APPROXIMATELY 30 FEET FROM THE EDGE OF IL 251.

FOR STABILIZATION, ALL TYPE III BARRICADES SHALL REQUIRE A MINIMUM OF FOUR SAND BAGS PER BARRICADE.

ANY REFERENCE TO A STANDARD IN THESE PLANS SHALL BE INTERPRETED TO MEAN THE EDITION AS INDICATED BY THE SUBNUMBER SHOWN IN THE LIST OF STANDARDS OR THE COPY INCLUDED IN THESE PLANS.

THE FOLLOWING RATES OF APPLICATION HAVE BEEN USED IN CALCULATING PLAN QUANTITIES:

GRANULAR MATERIALS	2.05	TONS / CU YD
BITUMINOUS MATERIALS (PRIME COAT)	0.08	GAL / SQ YD
FOR ADDITIONAL HMA LIFTS "FOG COAT"	0.05	GAL / SQ YD
AGGREGATE PRIME COAT	0.002	TONS / SQ YD
HMA RESURFACING	112	LBS / SQ YD / IN
SHORT TERM PAVEMENT MARKING	10	FT / 100 FT OF APPLICATION
MIX FOR CRACKS, JTS & FLGWYS	0.0003	TONS / SQ YD
LEVEL BINDER (HAND METHOD)	0.0005	TONS / SQ YD

THE CONTRACTOR SHALL CONTACT JULIE AT LEAST 48 HOURS PRIOR TO EXCAVATION TO DETERMINE WHICH UTILITIES ARE IN THE AREA.

STATE OF ILLINOIS
DEPARTMENT OF TRANSPORTATION
DISTRICT THREE

PREPARED BY: *R. J. Howell*
DISTRICT STUDIES & PLANS ENGINEER

DATE: 3/25/09

EXAMINED BY: *Herb Jung*
DISTRICT CONSTRUCTION ENGINEER

Wayne Anderson
DISTRICT MATERIALS ENGINEER

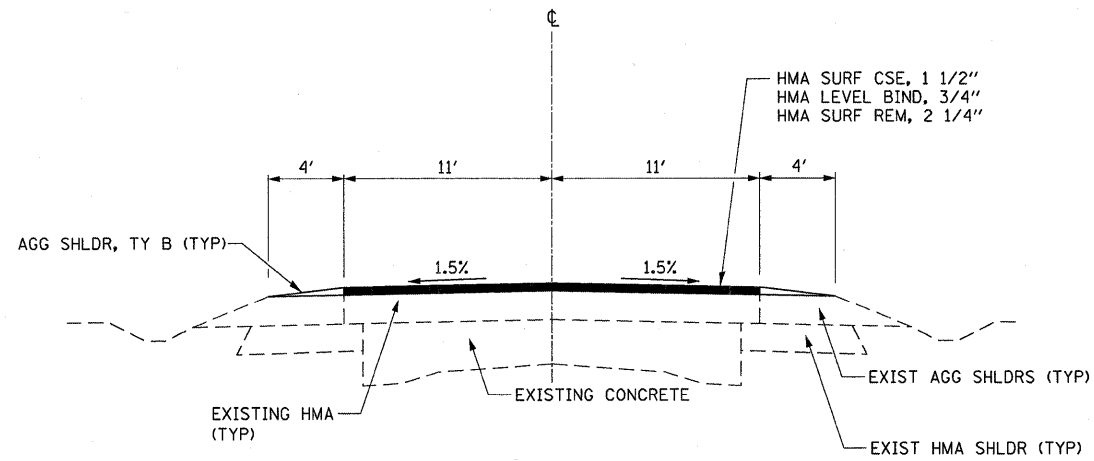
Bruce A. Henderson
DISTRICT OPERATIONS ENGINEER

FILE NAME =	USER NAME = lindemanns	DESIGNED -	REVISED -	STATE OF ILLINOIS DEPARTMENT OF TRANSPORTATION	GENERAL NOTES	F.A.S. RTE.	SECTION	COUNTY	TOTAL SHEETS	SHEET NO.
c:\pwork\pwork\lindemanns\d0122862\366969-shr-cover.dgn	DRAWN -	REVISED -	250			(71,72)RS-6	LASALLE	12	2	
PLOT SCALE = 50.0000' / IN.	CHECKED -	REVISED -	CONTRACT NO. 66969							
PLOT DATE = Mar 25, 2009 - 08:58:02 AM	DATE -	REVISED -	ILLINOIS FED. AID PROJECT							
SCALE: _____ SHEET NO. ____ OF ____ SHEETS STA. _____ TO STA. _____										

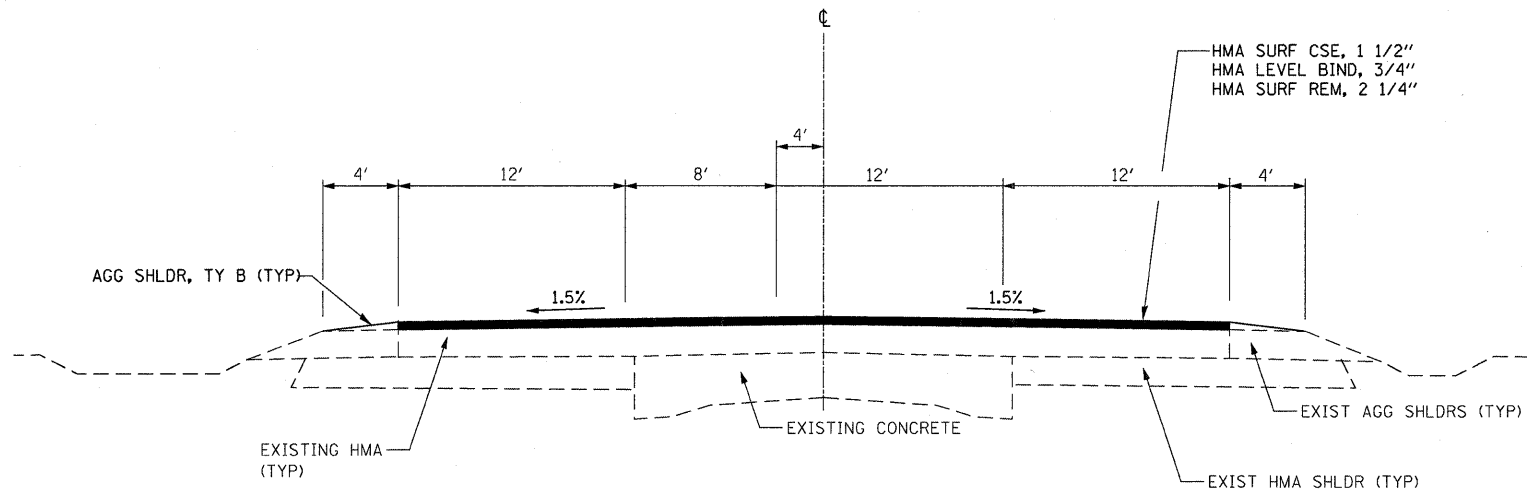
SUMMARY OF QUANTITIES			100% STATE
CODE NO.	CONSTRUCTION CODE TYPE:		1000
	ITEM	UNIT	TOTAL
40600100	BITUMINOUS MATERIALS (PRIME COAT)	GALLON	31285
40600300	AGGREGATE (PRIME COAT)	TON	596
40600400	MIXTURE FOR CRACKS, JOINTS, AND FLANGEWAYS	TON	45
40600535	LEVELING BINDER (HAND METHOD), N70	TON	74
40600635	LEVELING BINDER (MACHINE METHOD), N70	TON	6257
40600895	CONSTRUCTING TEST STRIP	EACH	1
40600990	TEMPORARY RAMP	SQ YD	59
40603340	HOT-MIX ASPHALT SURFACE COURSE, MIX "D",N70	TON	12514
44000158	HOT-MIX ASPHALT SURFACE REMOVAL, 2 1/4"	SQ YD	148979
48101200	AGGREGATE SHOULDERS, TYPE B	TON	10883
66700205	PERMANENT SURVEY MARKERS, TYPE I	EACH	12
67000400	ENGINEER'S FIELD OFFICE, TYPE A	CAL MO	4
67100100	MOBILIZATION	L SUM	1
70100460	TRAFFIC CONTROL AND PROTECTION, STANDARD 701306	L SUM	1
70300100	SHORT-TERM PAVEMENT MARKING	FOOT	13168
70300610	TEMPORARY PAINT PAVEMENT MARKING, LETTERS AND SYMBOLS	SQ FT	78
70300625	TEMPORARY PAINT PAVEMENT MARKING LINE 4"	FOOT	132240
70300635	TEMPORARY PAINT PAVEMENT MARKING LINE 6"	FOOT	14426
70300640	TEMPORARY PAINT PAVEMENT MARKING LINE 8"	FOOT	550
70300645	TEMPORARY PAINT PAVEMENT MARKING LINE 12"	FOOT	670
70300660	TEMPORARY PAINT PAVEMENT MARKING LINE 24"	FOOT	35
70301000	WORK ZONE PAVEMENT MARKING REMOVAL	SQ FT	2192
78000100	THERMOPLASTIC PAVEMENT MARKING - LETTERS AND SYMBOLS	SQ FT	78
78000200	THERMOPLASTIC PAVEMENT MARKING - LINE 4"	FOOT	8756
78000500	THERMOPLASTIC PAVEMENT MARKING - LINE 8"	FOOT	550
78000600	THERMOPLASTIC PAVEMENT MARKING - LINE 12"	FOOT	670
78000650	THERMOPLASTIC PAVEMENT MARKING - LINE 24"	FOOT	35
78001110	PAINT PAVEMENT MARKING - LINE 4"	FOOT	123484
78001130	PAINT PAVEMENT MARKING - LINE 6"	FOOT	14426
78100100	RAISED REFLECTIVE PAVEMENT MARKER	EACH	799
78200300	PRISMATIC CURB REFLECTOR	EACH	8
78300200	RAISED REFLECTIVE PAVEMENT MARKER REMOVAL	EACH	799
X0326471	HOT-MIX ASPHALT FOR PATCHING	TON	1830
X0326472	HOT-MIX ASPHALT REMOVAL	SQ YD	14525

* SPECIALTY ITEMS

FILE NAME =	USER NAME = Lundemann	DESIGNED -	REVISED -	STATE OF ILLINOIS DEPARTMENT OF TRANSPORTATION	SUMMARY OF QUANTITIES		F.A.S. RTE.	SECTION	COUNTY	TOTAL SHEETS	SHEET NO.
cs:\pav\work\projects\l\lundemann\140020862	366969-ah-300.DGN	DRAWN -	REVISED -		250	(71,72)RS-6	LASALLE	12	3		
PLDT SCALE = 58.0000' / IN.	CHECKED -	REVISED -	SCALE: _____ SHEET NO. ____ OF ____ SHEETS STA. _____ TO STA. _____		CONTRACT NO. 66969						
PLDT DATE = Mar 25, 2009 - 08:55:43 AM	DATE -	REVISED -	ILLINOIS FED. AID PROJECT								



PROPOSED IL 251
STA. 154 + 00 TO STA. 484 + 70
STA. 501 + 88 TO STA. 748 + 20



PROPOSED US 52/IL 251 INTERSECTION
STA. 484 + 70 TO STA. 501 + 88

MIX DESIGN						
MIX	PG GRADE	MAX % RAP ALLOWABLE	DESIGN AIR VOIDS	MIX COMPOSITION	FRICITION AGG	DENSITY CONTROL
HMA SURFACE	PG 64-22	10%	4.0% @N70	IL 12.5 OR IL 9.5	MIXTURE C	CORRELATION
LEVELING BINDER	PG 64-22	15%	4.0% @N70	IL 9.5		
HMA FOR PATCHING	PG 64-22	15%	4.0% @N70	IL 19.0		CORES / NUCLEAR

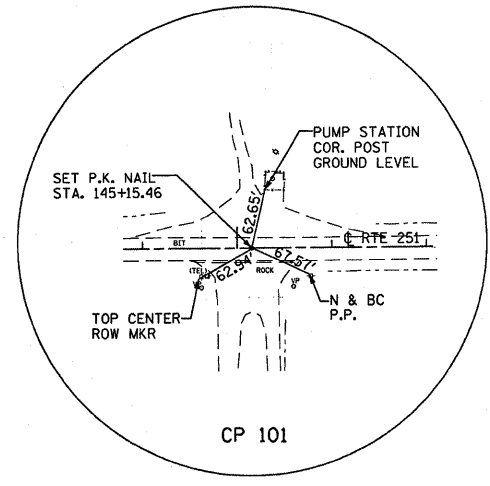
IF RAP OPTION IS SELECTED, THE ASPHALT CEMENT GRADE MAY NEED TO BE ADJUSTED. THIS WILL BE DETERMINED BY THE ENGINEER

MILLING & RESURFACING SCHEDULE													
LOCATION	LENGTH	RESURF AREA	HMA SURF REM 2 1/4"	HMA SURF CSE	LEVELING BINDER (MM)	HMA FOR PATCHING	HMA REM	TEMP RAMP	BIT MAT (PR CT)	AGG (PR CT)	MIX FOR CRACKS JTS & FLGWYS	LEVELING BINDER (HM)	AGG SHLD
STA TO STA	FOOT	SQ YD	SQ YD	TON	TON	TON	SQ YD	SQ YD	GALLON	TON	TON	TON	TON
IL 251													
154+00 TO 484+70	33070	80837.8	80837.8	6790.4	3395.2			15.6	16976	323.4	24.3	40.4	3347.8
484+70 TO 501+88	49774	7643.6	7643.6	642.1	321.0				1605	30.6	2.3	3.8	5038.8
501+88 TO 748+20	24632	60211.6	60211.6	5057.8	2528.9			15.6	12644	240.8	18.1	30.1	2493.6
US 52													
0+20 TO 0+50	30	286.0	286.0	24.0	12.0			27.8	60	1.1	0.1	0.1	3
PATCHING													
10 % THROUGHOUT	5942	14524.9											
TOTAL		163503.9	148979	12514.3	6257.1	1830.1	14524.9	59.0	31285	595.9	44.8	74.4	10883.2

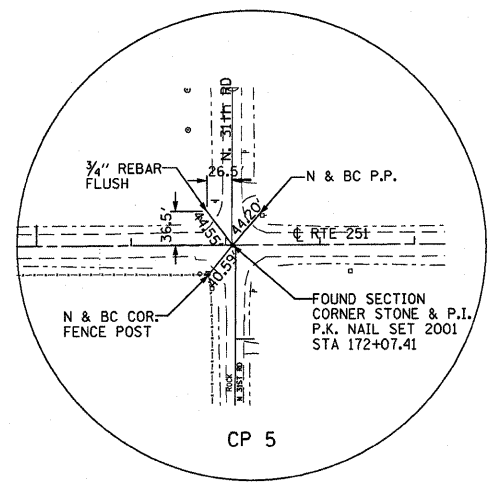
PAVEMENT MARKING SCHEDULE																
LOCATION	LENGTH	PAINT PAVEMENT MARKING 4"		PAINT PVMT MARK 6"	THERMOPLASTIC PAVEMENT MARKING 4"		THERMO PVMT MARK 8"	THERMOPLASTIC PAVEMENT MARKING 12"		THERMO PVMT MARK 24"	THERMO PVMT MARK LETTERS & SYMB	RAISED REFLECT PVMT MARK REM	RAISED REFLECT PVMT MARK	PRISMATIC CURB REFLECT	SHORT TERM PVMT MARK	WORK ZONE PVMT MARK REM
		WHITE	YELLOW	YELLOW	WHITE	YELLOW	WHITE	WHITE	YELLOW	WHITE	SQ FT	EACH	EACH	EACH	FOOT	SQ FT
		FOOT	FOOT	FOOT	FOOT	FOOT	FOOT	FOOT	FOOT	FOOT	FOOT	FOOT	FOOT	FOOT	FOOT	FOOT
154+00 TO 484+70	33070	66140		8268								413	413		6614	1101
484+70 TO 501+88	1718				3416	5340	550	60	610	35	78	78	78	8	1628	271
501+88 TO 748+20	24632	49264		6158								308	308		4926	820
NO PASSING ZONES THROUGHOUT				8080												
TOTAL		115404	8080	14426	3416	5340	550	60	610	35	78	799	799	8	13168	2192

NO PASSING ZONES SHALL BE REPLACED

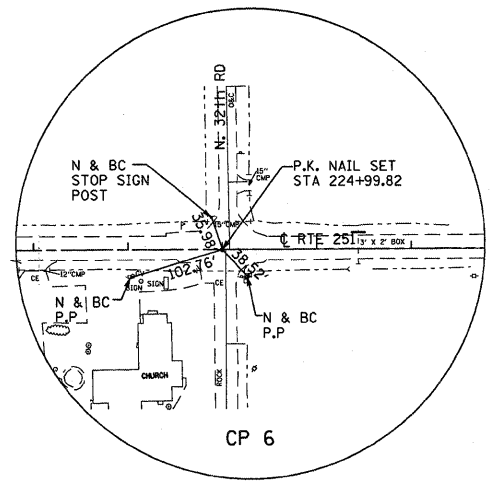
TEMPORARY PAVEMENT MARKING SCHEDULE									
LOCATION	LENGTH	TEMPORARY PAVEMENT MARKING 4"		TEMP PVMT MARK 6"	TEMP PVMT MARK 8"	TEMPORARY PAVEMENT MARKING 12"		TEMP PVMT MARK 24"	TEMP PVMT MARK LETTERS & SYMB
		WHITE	YELLOW	YELLOW	WHITE	WHITE	YELLOW	WHITE	SQ FT
		FOOT	FOOT	FOOT	FOOT	FOOT	FOOT	FOOT	FOOT
154+00 TO 484+70	33070	66140		8268					
484+70 TO 501+88	1718	3416	5340	550	60	610	35	78	
501+88 TO 748+20	24632	49264		6158					
NO PASSING ZONES THROUGHOUT				8080					
TOTAL		118820	13420	14426	550	60	610	35	78



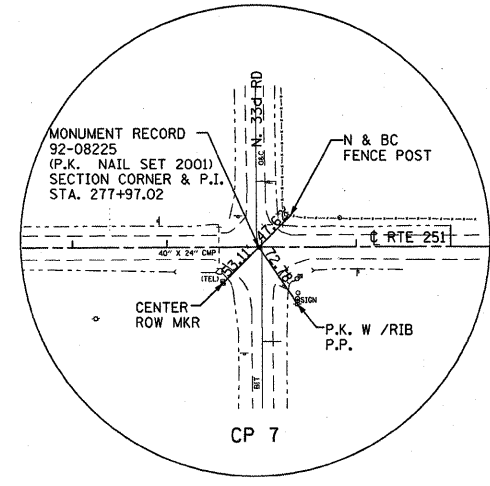
CP 101



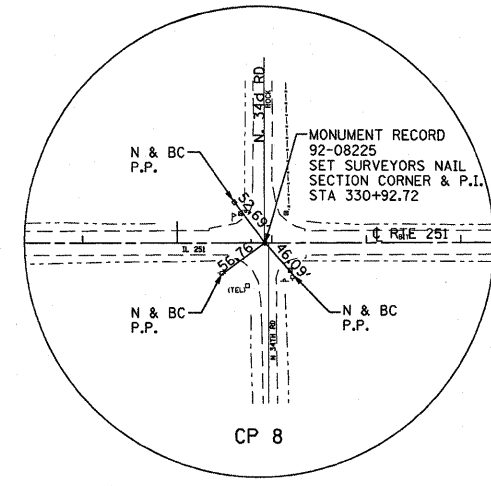
CP 5



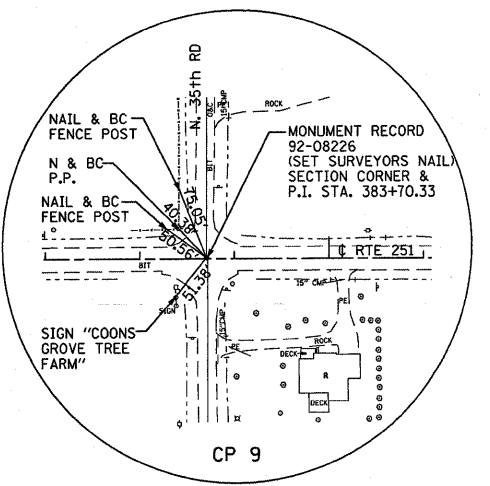
CP 6



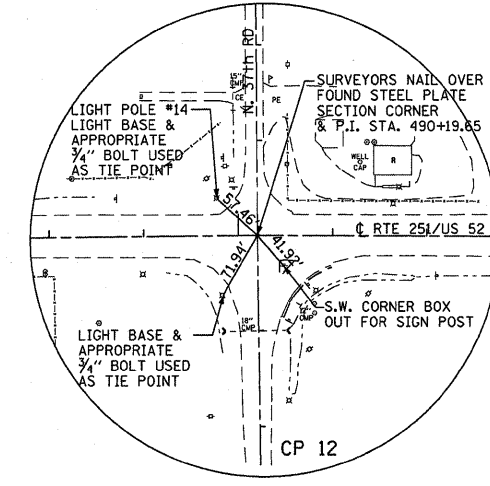
CP 7



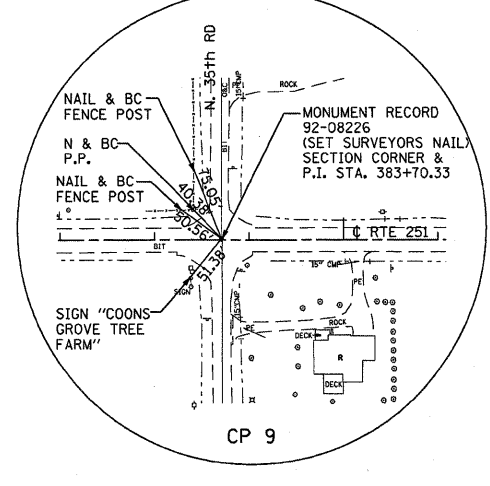
CP 8



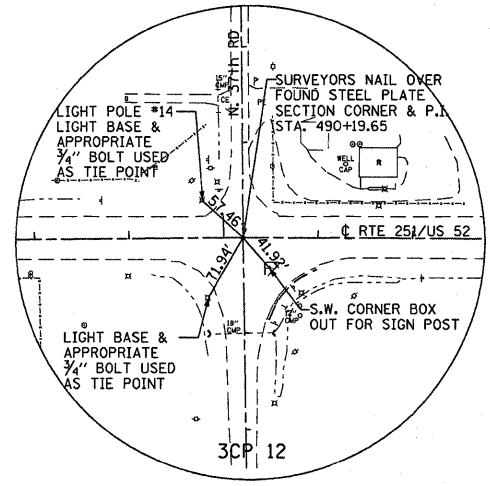
CP 9



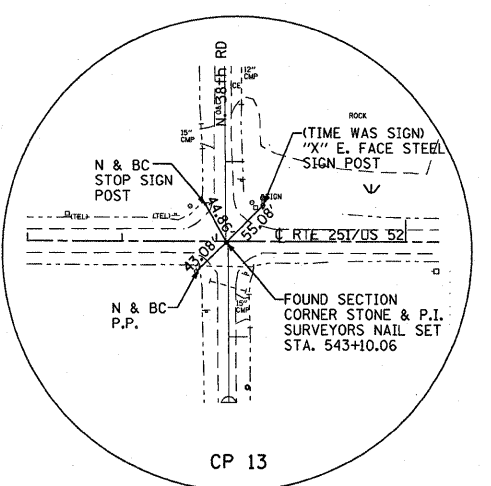
CP 12



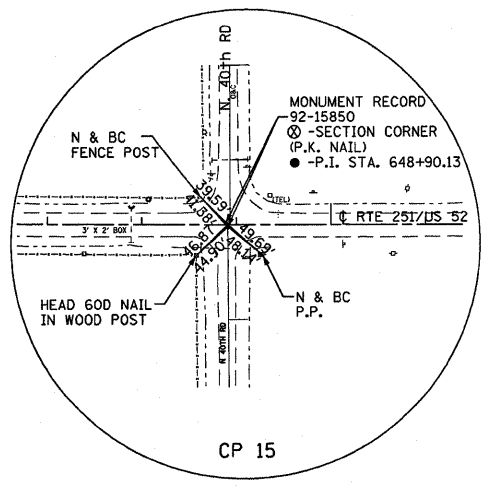
CP 9



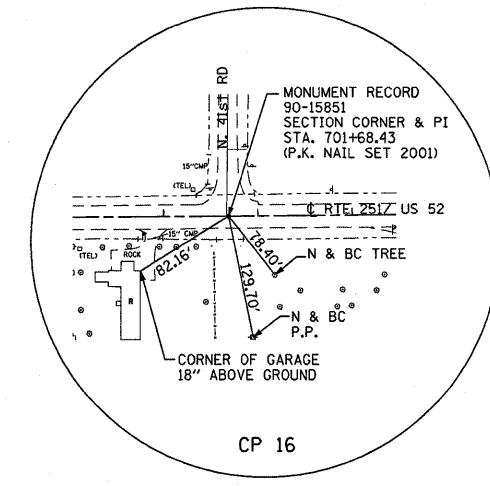
3CP 12



CP 13



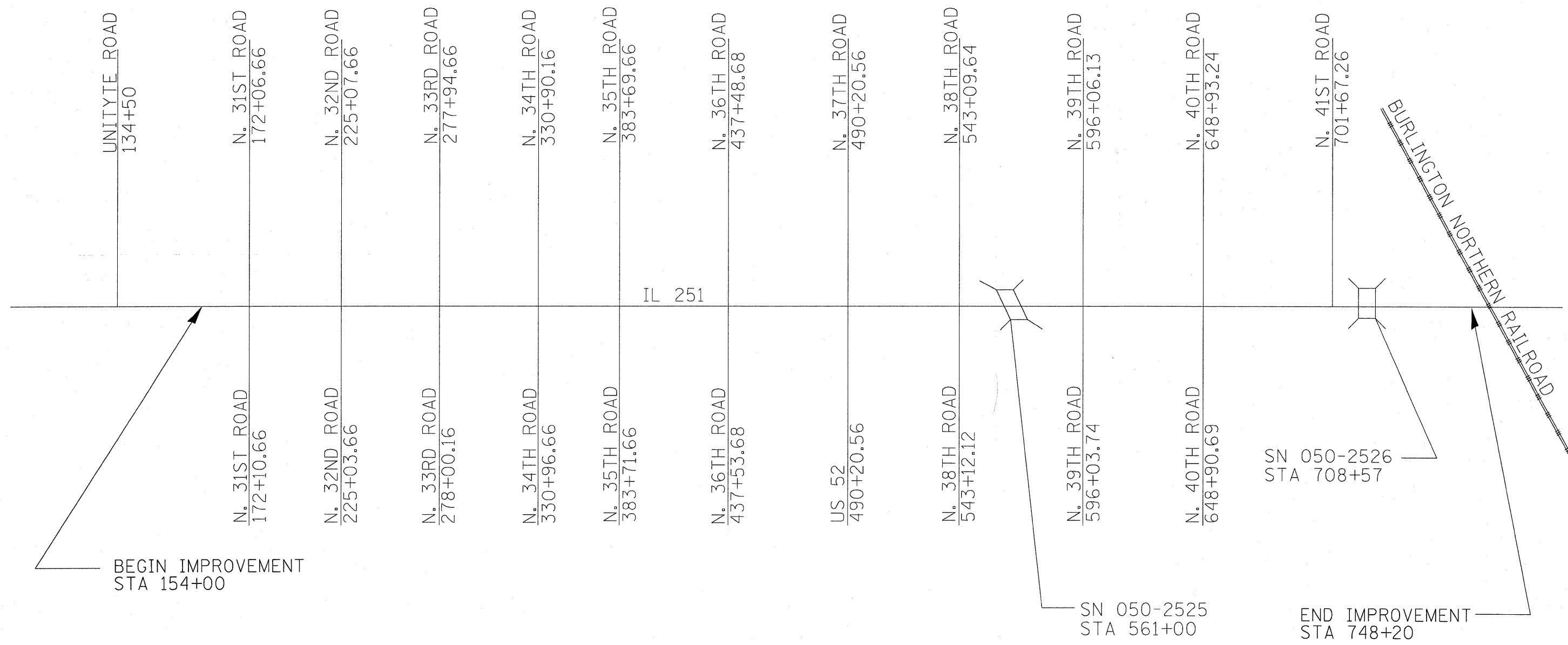
CP 15



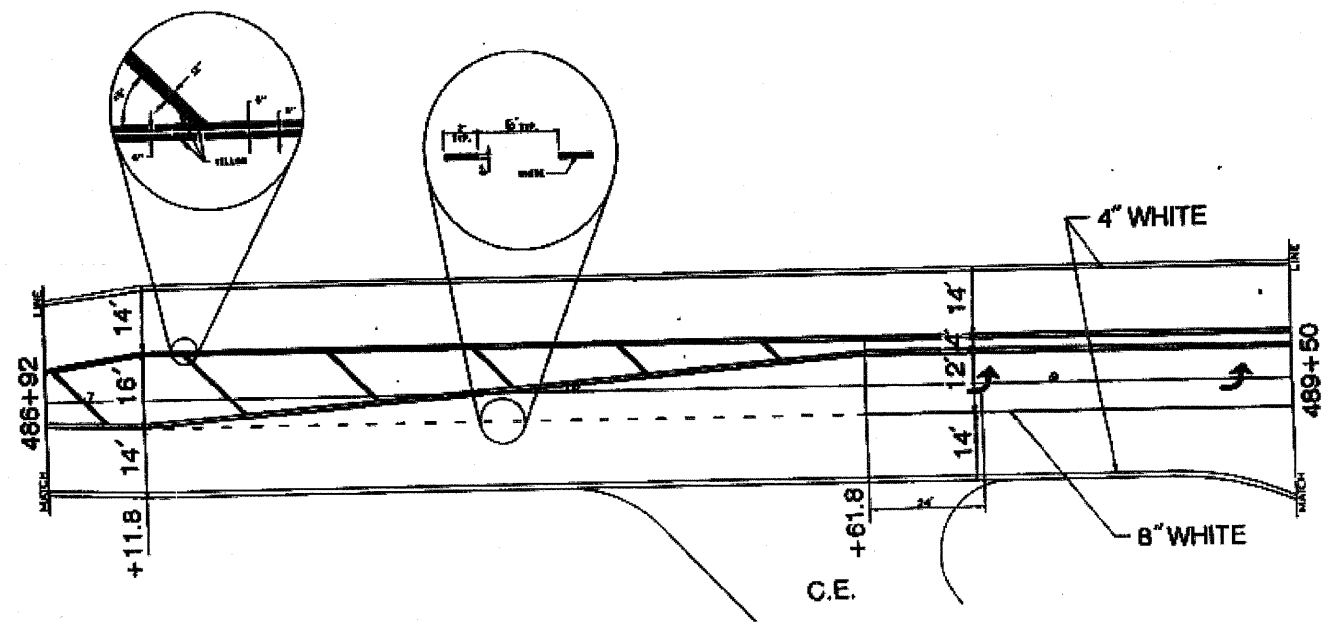
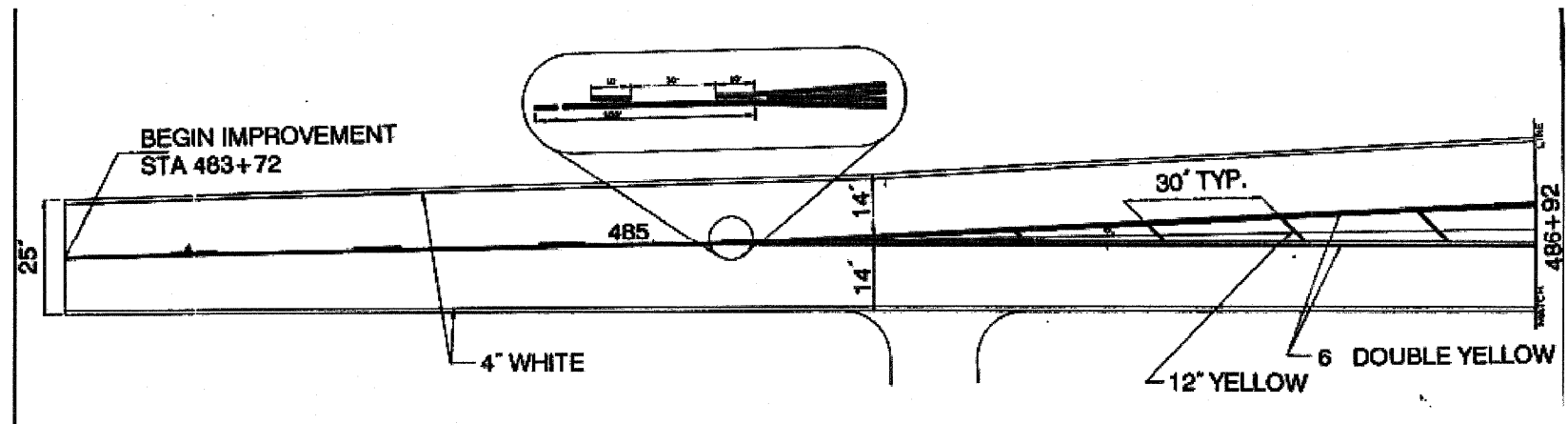
CP 16

ALL TIES SHALL BE REPLACED WITH PERMANENT SURVEY MARKERS

FILE NAME =	USER NAME = lindemanns	DESIGNED -	REVISED -	STATE OF ILLINOIS DEPARTMENT OF TRANSPORTATION	TIE POINTS				F.A.S. RTE.	SECTION	COUNTY	TOTAL SHEETS	SHEET NO.		
c:\pwork\pwidot\lindemanns\d0122862\LNMI.dgn	LNMI.dgn	DRAWN -	REVISED -		SCALE:	SHEET NO.	OF	SHEETS	STA.	TO STA.	250	(71,72)RS-6	LASALLE	12	6
		PLOT SCALE = 50.0000' / IN.	CHECKED -		REVISED -	CONTRACT NO. 66969									
		PLOT DATE = Mar 25, 2009 - 09:35:01 AM	DATE -		REVISED -	ILLINOIS FED. AID PROJECT									



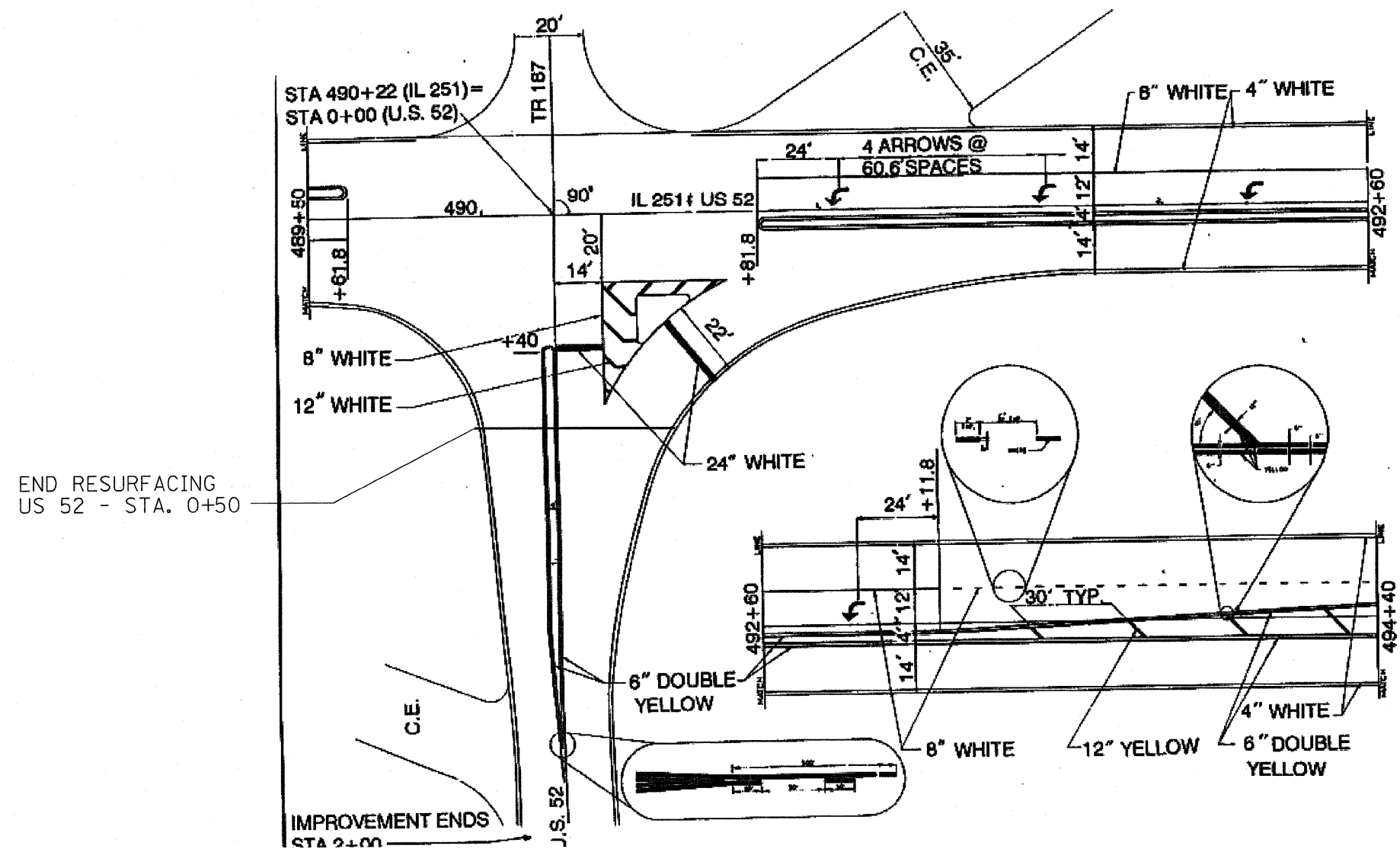
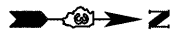
FILE NAME = c:\pwork\PWIDOT\LINDEMANNS\d0122862	USER NAME = lindemann	DESIGNED -	REVISED -	STATE OF ILLINOIS DEPARTMENT OF TRANSPORTATION	PROJECT LAYOUT				F.A.S. RTE.	SECTION	COUNTY	TOTAL SHEETS	SHEET NO.
	d366969-ah-1-layout.DGN	DRAWN -	REVISED -						250	(71,72)RS-6	LASALLE	12	7
	PLDT SCALE = 50.0000' / IN.	CHECKED -	REVISED -		REVISED -	SCALE:	SHEET NO. OF SHEETS	STA.	TO STA.	CONTRACT NO. 66969			
PLDT DATE = Mar 25, 2009 - 08:59:03 AM	DATE -	REVISED -	REVISED -	ILLINOIS FED. AID PROJECT									



NOTE:
 THESE DETAILS WERE TAKEN FROM A
 PREVIOUS IMPROVEMENT AND ARE INTENDED
 FOR INFORMATION ONLY

US 52 WILL BE RESURFACED AND PAVEMENT
 MARKING WILL BE REPLACED BACK TO THE
 PAVEMENT JOINT AT APPROXIMATE STATION 0+50.

FILE NAME =	USER NAME = lindemannms	DESIGNED -	REVISED -	STATE OF ILLINOIS DEPARTMENT OF TRANSPORTATION	PAVEMENT MARKING DETAILS AT US 52		F.A.S. RTE.	SECTION	COUNTY	TOTAL SHEETS	SHEET NO.	
ci\pwork\PWIDOT\LINDEMANMS\d0122862	d366969-ahf-de tails.DGN	DRAWN -	REVISED -		SCALE: _____	SHEET NO. ___ OF ___ SHEETS	STA. _____ TO STA. _____	250	(71,72)RS-6	LASALLE	12	8
	PLDT SCALE = 50.0000' / IN.	CHECKED -	REVISED -		CONTRACT NO. 66969							
	PLDT DATE = Mar 25, 2009 - 09:14:12 AM	DATE -	REVISED -		ILLINOIS FED. AID PROJECT							

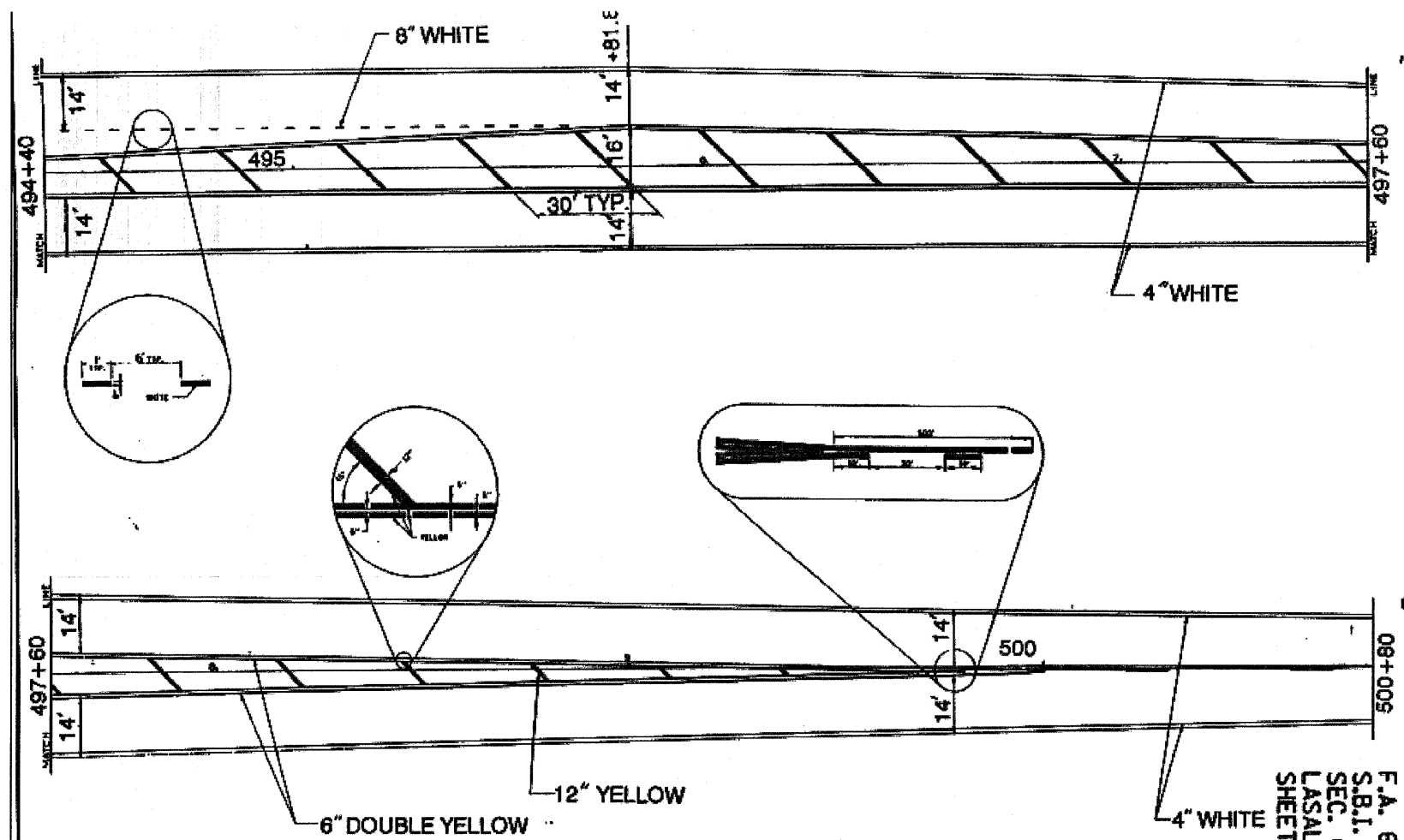


END RESURFACING
US 52 - STA. 0+50

NOTE:
THESE DETAILS WERE TAKEN FROM A
PREVIOUS IMPROVEMENT AND ARE INTENDED
FOR INFORMATION ONLY

US 52 WILL BE RESURFACED AND PAVEMENT
MARKING WILL BE REPLACED BACK TO THE
PAVEMENT JOINT AT APPROXIMATE STATION 0+50.

FILE NAME = c:\pw_work\FWIDOT\LINDEMANNS\d0122862	USER NAME = lindemanns	DESIGNED -	REVISED -	STATE OF ILLINOIS DEPARTMENT OF TRANSPORTATION	PAVEMENT MARKING DETAILS AT US 52			F.A.S. RTE. 250	SECTION (71,72)RS-6	COUNTY LASALLE	TOTAL SHEETS 12	SHEET NO. 9
	PLOT SCALE = 50,0000 / / IN.	CHECKED -	REVISED -					CONTRACT NO. 66969				
	PLOT DATE = Mar 25, 2009 - 09:26:21 AM	DATE -	REVISED -	SCALE: _____ SHEET NO. ___ OF ___ SHEETS STA. _____ TO STA. _____			ILLINOIS FED. AID PROJECT					

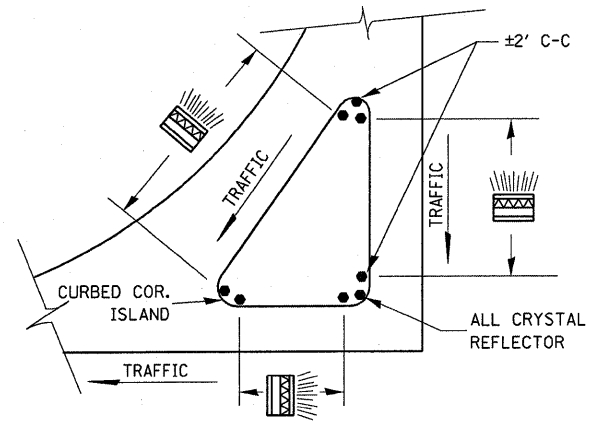
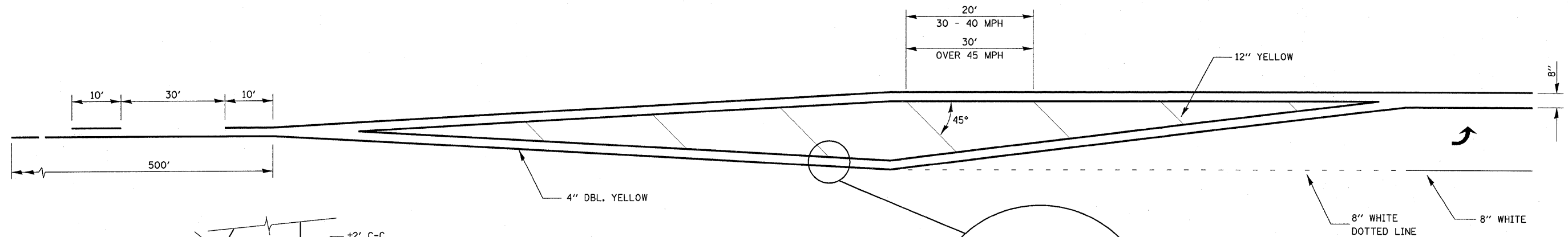


F.A. 6
S.B.I.
SEC. 1
LASALLE
SHEET

NOTE:
THESE DETAILS WERE TAKEN FROM A
PREVIOUS IMPROVEMENT AND ARE INTENDED
FOR INFORMATION ONLY

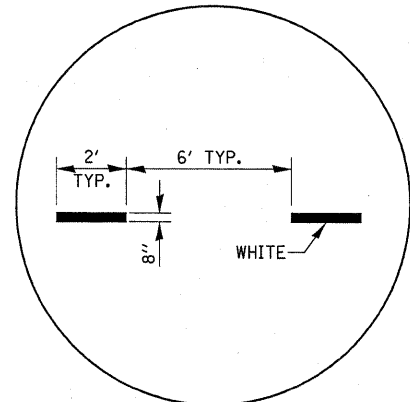
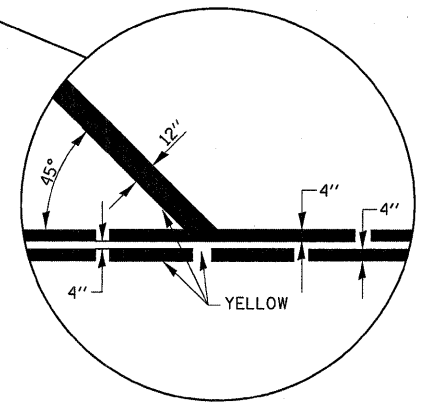
US 52 WILL BE RESURFACED AND PAVEMENT
MARKING WILL BE REPLACED BACK TO THE
PAVEMENT JOINT AT APPROXIMATE STATION 0+50.

FILE NAME =	USER NAME = lindemannms	DESIGNED -	REVISED -	STATE OF ILLINOIS DEPARTMENT OF TRANSPORTATION	PAVEMENT MARKING DETAILS AT US 52		F.A.S. RTE.	SECTION	COUNTY	TOTAL SHEETS	SHEET NO.
c:\pwork\FWIDOT\LINDEMANNMS\d0122862	4368969-ahd-detaila.DGN	DRAWN -	REVISED -		250	(71,72)RS-6	LASALLE	12	10		
	PLOT SCALE = 50.0000' / IN.	CHECKED -	REVISED -		CONTRACT NO. 66969			ILLINOIS FED. AID PROJECT			
	PLOT DATE = Mar 25, 2009 - 09:26:48 AM	DATE -	REVISED -		SCALE: _____	SHEET NO. ___ OF ___ SHEETS	STA. _____ TO STA. _____				

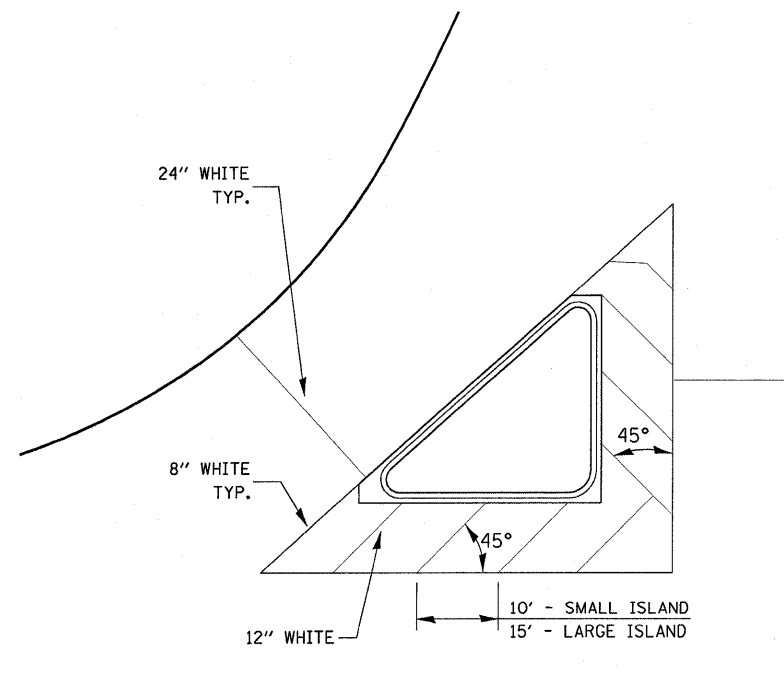


PRISMATIC REFLECTORS

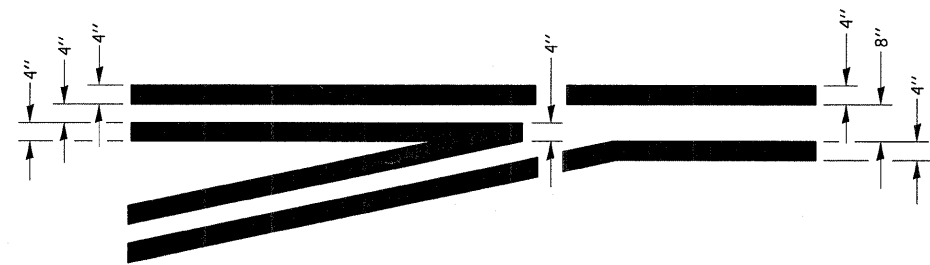
LEFT TURN LANE WITH APPROACH MEDIAN



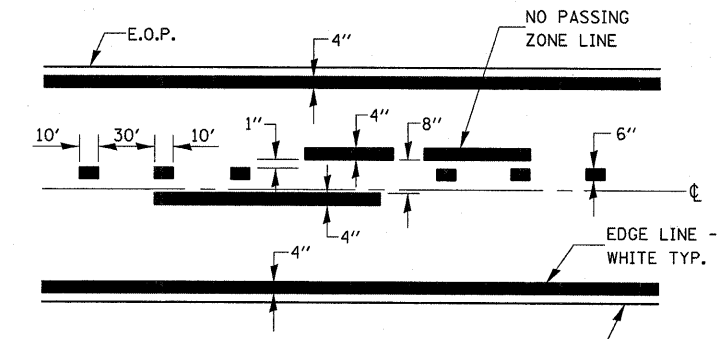
ADVANCE AND INTERSECTION LANE DIVIDER LINES



TYPICAL ISLAND

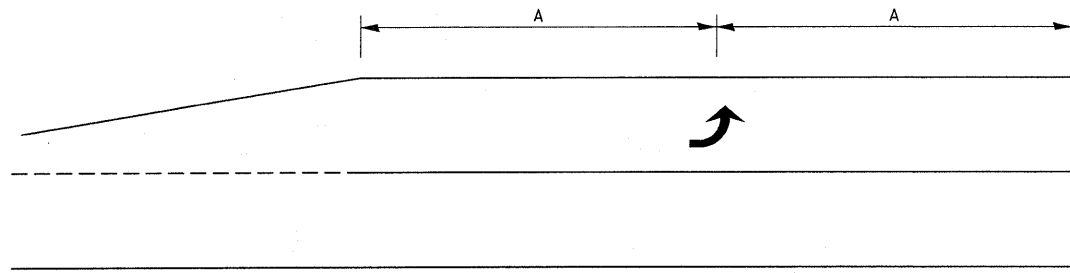


TYPICAL APPLICATION @ LEFT TURN LANES

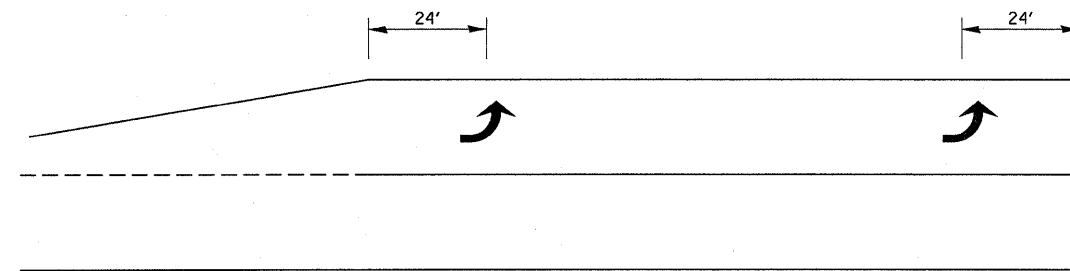


PAVEMENT MARKING

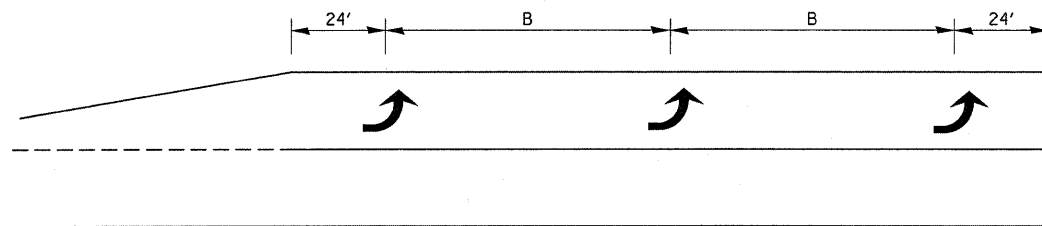
FILE NAME =	USER NAME = lindemanns	DESIGNED -	REVISED -	STATE OF ILLINOIS DEPARTMENT OF TRANSPORTATION	DETAILS		F.A.S. RTE.	SECTION	COUNTY	TOTAL SHEETS	SHEET NO.
cd\pe_work\FW100T\LINDEMANNMS\dl0122862	3366969-sht-details.DGN	DRAWN -	REVISED -				250	(71,72)RS-6	LASALLE	12	11
	PLOT SCALE = 50.0000' / IN.	CHECKED -	REVISED -		SCALE: _____ SHEET NO. _____ OF _____ SHEETS STA. _____ TO STA. _____		CONTRACT NO. 66969				
	PLOT DATE = Mar 25, 2009 - 09:29:35 AM	DATE -	REVISED -		ILLINOIS FED. AID PROJECT						



99' AND UNDER

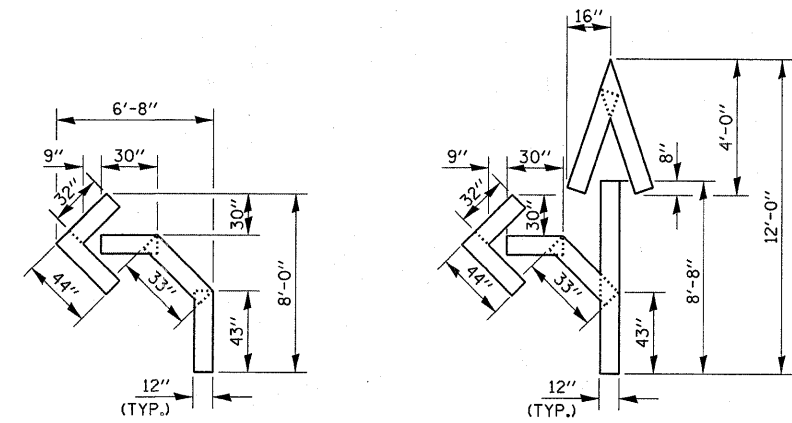


100' TO 149'



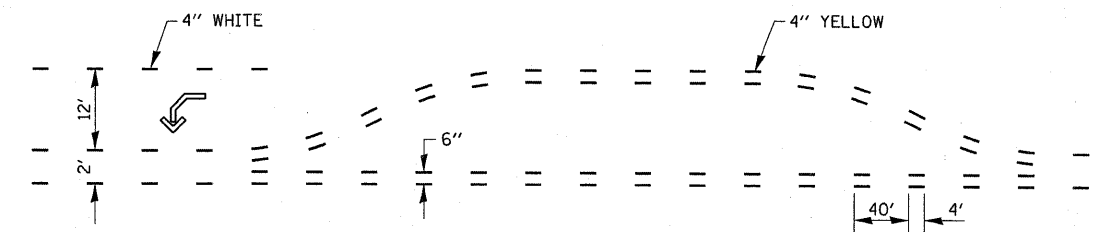
150' AND LONGER

**TYPICAL PLACEMENT OF ARROWS
IN TURN LANES**

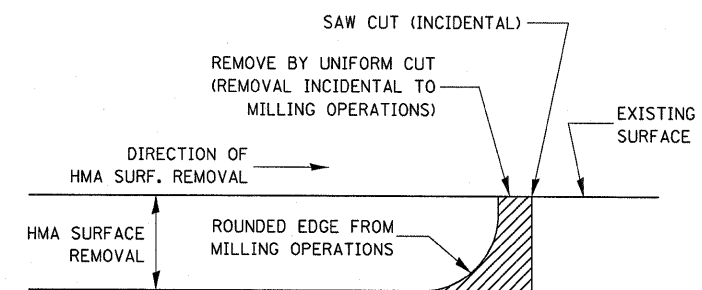


QUANTITY
12" LINE = 16 LIN. FT.
OR 4" LINE = 48 LIN. FT.

QUANTITY
12" LINE = 29 LIN. FT.
OR 4" LINE = 87 LIN. FT.



**SHORT-TERM PAVEMENT MARKING
FOR MEDIANS AND ARROWS**



NOTE:
WHEN MILLING OPERATIONS PRODUCE A ROUNDED EDGE,
THEN A SAW CUT SHALL BE USED TO MANUFACTURE
A PERPENDICULAR EDGE AS SHOWN IN THE DETAIL.
THE ENGINEER SHALL BE THE SOLE JUDGE
CONCERNING THE USE OF THIS DETAIL

HMA DETAIL AT BUTT JOINTS

FILE NAME =	USER NAME = lindemannms	DESIGNED -	REVISED -	STATE OF ILLINOIS DEPARTMENT OF TRANSPORTATION	DETAILS	F.A.S. RTE.	SECTION	COUNTY	TOTAL SHEETS	SHEET NO.	
ca\pw_work\FWIDOT\LINDEMANMS\d0122862	d366969-sht-details.DGN	DRAWN -	REVISED -			250	(71,72)RS-6	LASALLE	12	12	
	PLOT SCALE = 50.0000 / / IN.	CHECKED -	REVISED -			CONTRACT NO. 66969					
	PLOT DATE = Mar 25, 2009 - 09:29:44 AM	DATE -	REVISED -			ILLINOIS FED. AID PROJECT					