



STA. 475+64 TO 475+94
HMA SURFACE REMOVAL-BUTT JOINT = 82 SQ. YD.

STA. 475+64 TO 56+96
HMA SURFACE REMOVAL 1/2" = 14,909 SQ. YD.

PROJECT BEGINS
STA. 475+64

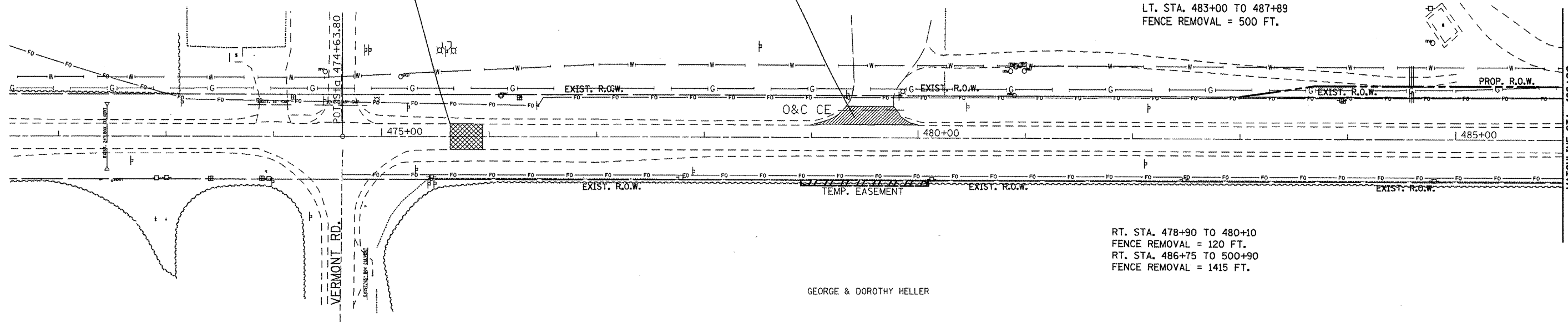
VERMONT COMMUNITY
UNIT DISTRICT 2

LT. STA. 479+55
DRIVEWAY PAVEMENT REMOVAL = 121.4 SQ. YD.
PIPE CULVERT REMOVAL, SPECIAL = 62.0 FT.
SAW CUTS = 44.6 FT.

LT. STA. 483+00 TO 487+89
FENCE REMOVAL = 500 FT.

RT. STA. 478+90 TO 480+10
FENCE REMOVAL = 120 FT.
RT. STA. 486+75 TO 500+90
FENCE REMOVAL = 1415 FT.

GEORGE & DOROTHY HELLER



MIN. DEPTH.	UTILITY	COMPANY
2'-6"	FIBER OPTIC	MID CENTURY TELEPHONE CORP.
2'-6"	NATURAL GAS	AMEREN CIPS
4'-0"	WATER	VILLAGE OF TABLE GROVE

- PLAN NOTES**
- REMOVAL OF SAPLINGS, BUSHES AND ROOTS SHALL BE REMOVED AND DISPOSED OF AS REQUIRED BY ARTICLE 201.
 - REFER TO THE GENERAL NOTE IF ANY PIPE UNDERDRAINS OR FIELD TILE ARE ENCOUNTERED DURING CONSTRUCTION.
 - FENCE REMOVAL WAS CALCULATED FROM THE APPRAISAL RECORDS FOR INDIVIDUAL PROPERTY OWNERS.

FILE NAME = propplenshts.dgn	USER NAME = ghdmaam	DESIGNED -	REVISED -
		DRAWN -	REVISED -
	PLOT SCALE = 100.0000' / IN.	CHECKED -	REVISED -
	PLOT DATE = 3/25/2009	DATE -	REVISED -

STATE OF ILLINOIS
DEPARTMENT OF TRANSPORTATION

REMOVAL AND EXISTING UTILITY INFORMATION

SCALE: SHEET NO. OF SHEETS STA. TO STA.

F.A.P. RTE.	SECTION	COUNTY	TOTAL SHEETS	SHEET NO.
315	109RS-4,110RS-2	FULTON		26
CONTRACT NO. 68330				
ILLINOIS FED. AID PROJECT				