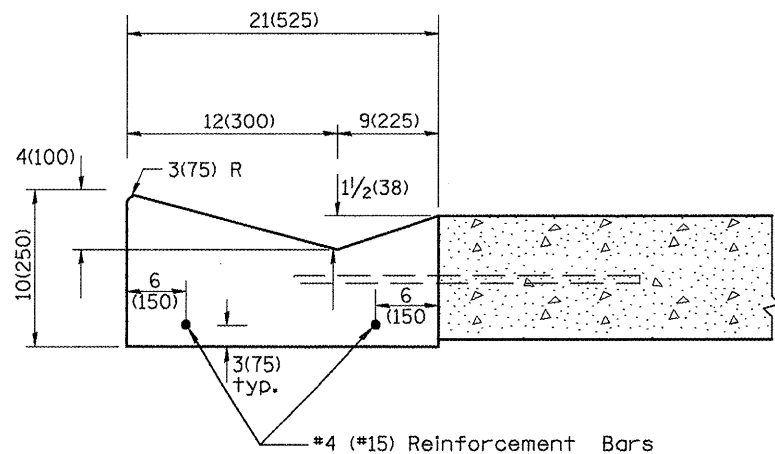
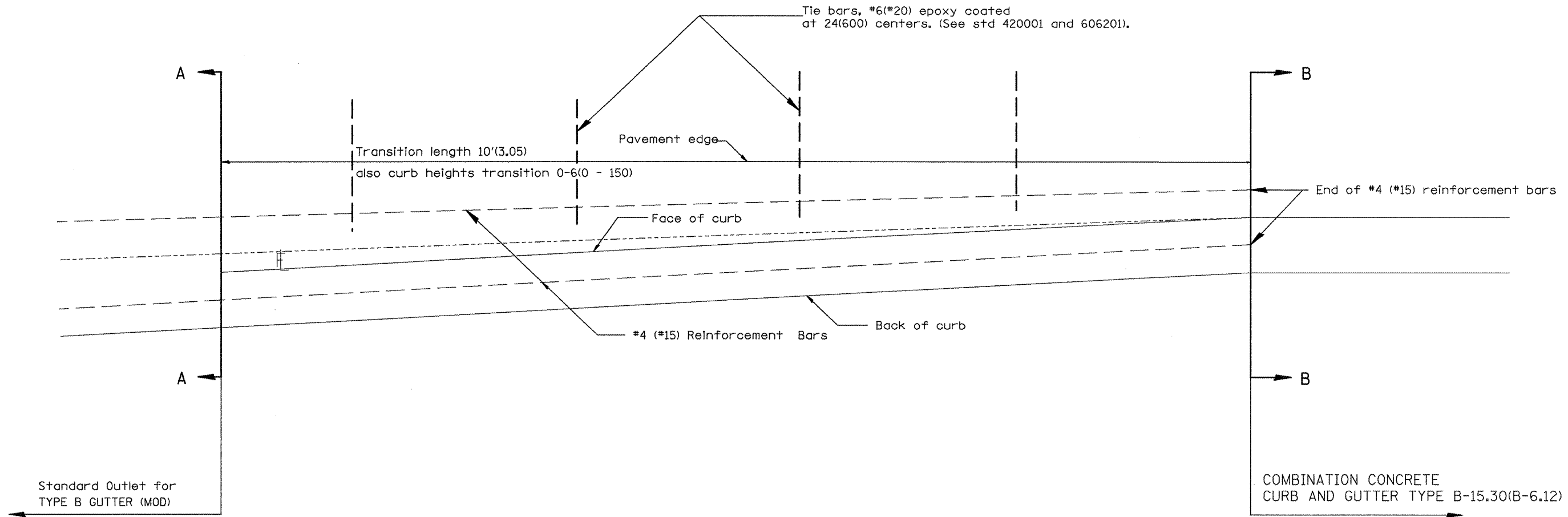
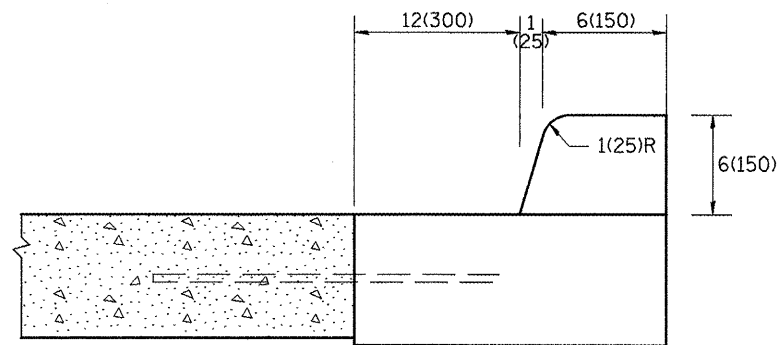


Designer Notes: 1. Use in conjunction with CAD DRAWING for Standard outlet for TYPE B GUTTER (MODIFIED)
 2. Include std 420001.
 3. Include District Special Provision



SECTION A - A



SECTION B - B

GENERAL NOTES:

1. Tie bars shall be constructed in accordance with details for BULKHEAD LONGITUDINAL CONSTRUCTION JOINT shown on Standard 420001.
2. Adjacent to sound existing p.c.c. pavement, tie bars shall be installed in drilled holes in accordance with article 420.10(b).
3. Construction and expansion joints shall be installed in prolongation with joints in the pavement. Joint shall be constructed in accordance with the applicable portion of Art. 606.06 of the Standard Specifications.

All dimensions are in Inches (millimeters) unless otherwise noted.

01-01-97	RENUM. A-7.11, METRICS, NEW REVISION BOX, REVISED	T.P.
	GENERAL NOTES, ELIMINATED EXPANSION TIE ANCHORS	
10-16-06	REVISED TO 2007 SPEC.	M.A.

**STATE OF ILLINOIS
DEPARTMENT OF TRANSPORTATION**

**TRANSITION FROM CONCRETE CURB AND GUTTER TYPE B-6.12 (B-15.30)
TO OUTLET FOR TYPE B GUTTER (MODIFIED)**

NOT TO SCALE

CADD STD. 606206-D4

F.A.P. RTE.	SECTION	COUNTY	TOTAL SHEETS	SHEET NO.
317	116 RS-3, 117 RS-4	PEORIA	54	47
CONTRACT NO. 68684				
FED. ROAD DIST. NO.		ILLINOIS FED. AID PROJECT		