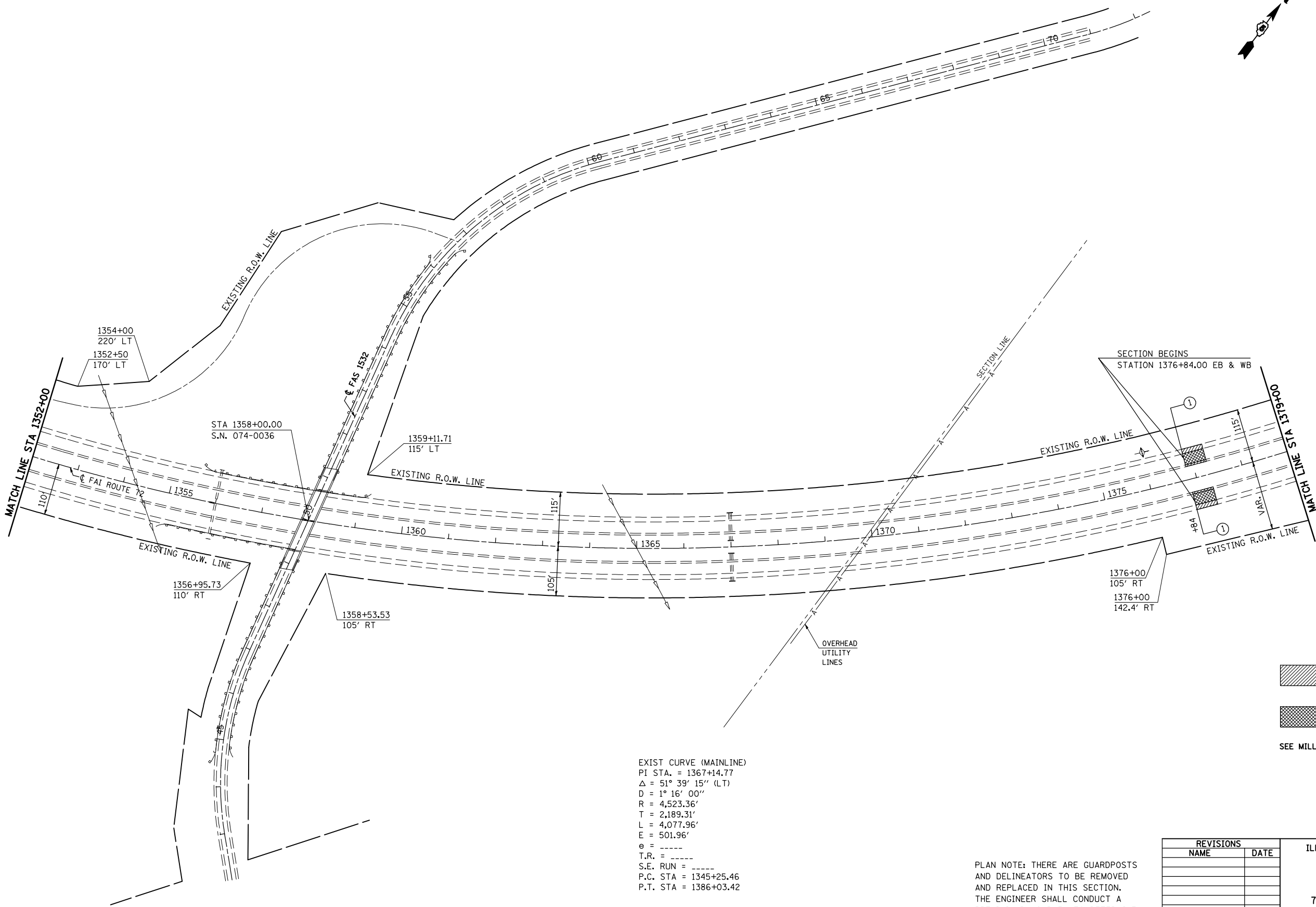
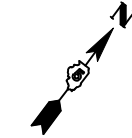


F.A.I. RTE.	SECTION	COUNTY	TOTAL SHEETS	SHEET NO.
72	*	**	104	37

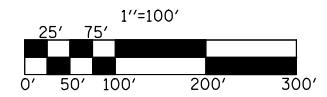
STA. 1352+00	TO STA. 1379+00
FED. ROAD DIST. NO.	ILLINOIS FED. AID PROJECT

- 74(10-70)RS-3 & (10-71,73)RS-2
- PIATT & CHAMPAIGN CONTRACT NO. 70025



EXIST CURVE (MAINLINE)
 PI STA. = 1367+14.77
 $\Delta = 51^\circ 39' 15''$ (LT)
 $D = 1^\circ 16' 00''$
 $R = 4,523.36'$
 $T = 2,189.31'$
 $L = 4,077.96'$
 $E = 501.96'$
 $\theta = \text{-----}$
 T.R. = -----
 S.E. RUN = -----
 P.C. STA = 1345+25.46
 P.T. STA = 1386+03.42

- HOT-MIX ASPHALT SURFACE REMOVAL BUTT-JOINT
- AREA OF MILLING TRANSITION
- SEE MILLING AND BUTT-JOINT DETAILS



PLAN NOTE: THERE ARE GUARDPOSTS AND DELINEATORS TO BE REMOVED AND REPLACED IN THIS SECTION. THE ENGINEER SHALL CONDUCT A PRELIMINARY SURVEY TO DETERMINE QUANTITY OF EACH ITEM PRIOR TO CONSTRUCTION.

REVISIONS	
NAME	DATE

ILLINOIS DEPARTMENT OF TRANSPORTATION

PLAN VIEW

F. A. I. ROUTE 72
 74(10, 70)RS-3&(10-71, 73)RS-2
 PIATT & CHAMPAIGN COUNTY

SCALE: 1" = 100'
 DATE: JULY 2003

DRAWN BY
 CHECKED BY