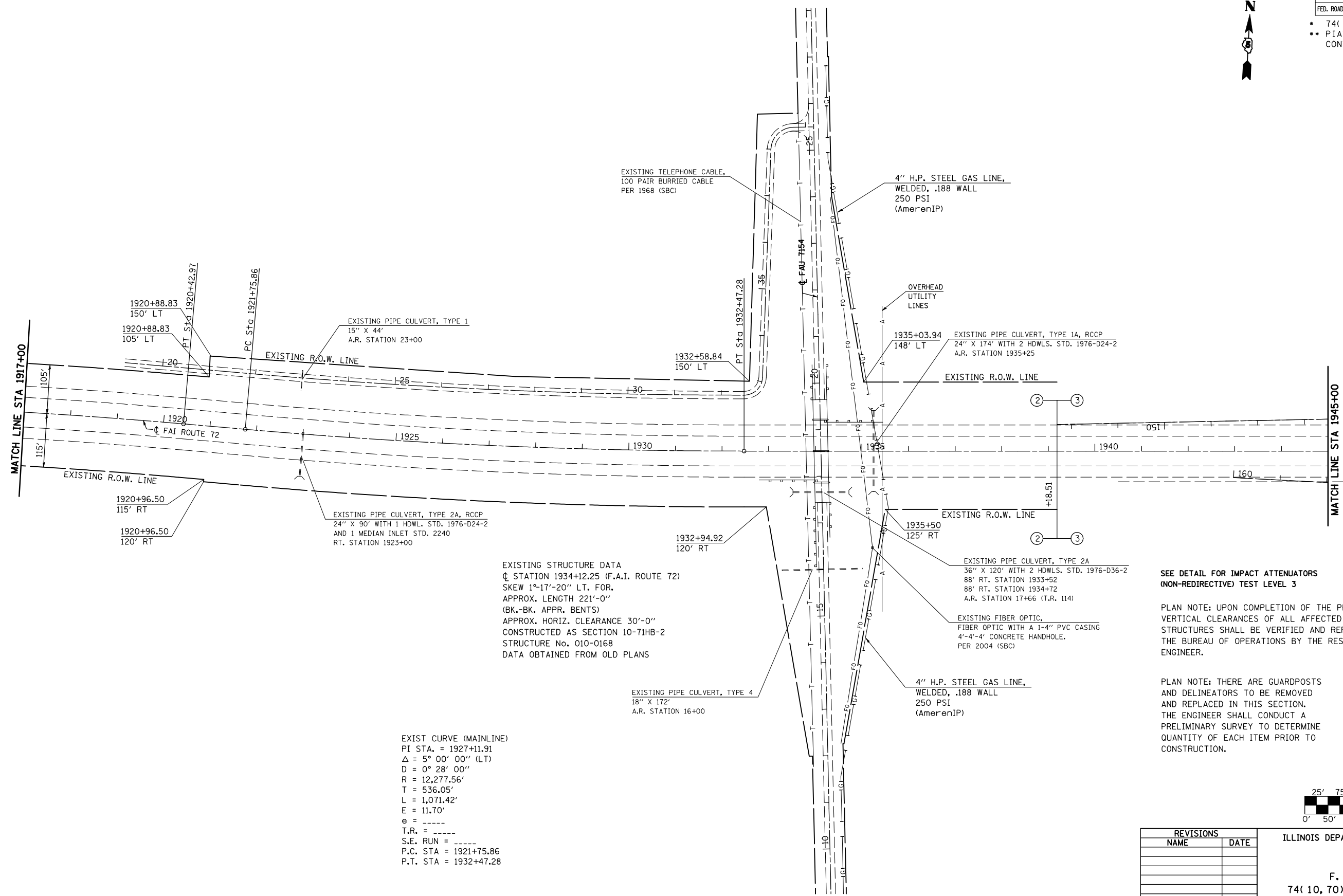


F.A.I. RTE.	SECTION	COUNTY	TOTAL SHEETS	SHEET NO.
72	*	**	104	57

STA. 1917+00	TO STA. 1945+00
FED. ROAD DIST. NO.	ILLINOIS FED. AID PROJECT

- 74(10-70)RS-3 & (10-71,73)RS-2
- PIATT & CHAMPAIGN CONTRACT NO. 70025



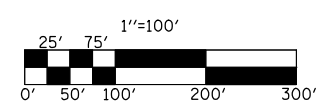
EXISTING STRUCTURE DATA
 STATION 1934+12.25 (F.A.I. ROUTE 72)
 SKEW 1°-17'-20" LT. FOR.
 APPROX. LENGTH 221'-0"
 (BK.-BK. APPR. BENTS)
 APPROX. HORIZ. CLEARANCE 30'-0"
 CONSTRUCTED AS SECTION 10-71HB-2
 STRUCTURE No. 010-0168
 DATA OBTAINED FROM OLD PLANS

EXIST CURVE (MAINLINE)
 PI STA. = 1927+11.91
 Δ = 5° 00' 00" (LT)
 D = 0° 28' 00"
 R = 12,277.56'
 T = 536.05'
 L = 1,071.42'
 E = 11.70'
 e = -----
 T.R. = -----
 S.E. RUN = -----
 P.C. STA = 1921+75.86
 P.T. STA = 1932+47.28

SEE DETAIL FOR IMPACT ATTENUATORS
 (NON-REDIRECTIVE) TEST LEVEL 3

PLAN NOTE: UPON COMPLETION OF THE PROJECT, THE VERTICAL CLEARANCES OF ALL AFFECTED OVERHEAD STRUCTURES SHALL BE VERIFIED AND REPORTED TO THE BUREAU OF OPERATIONS BY THE RESIDENT ENGINEER.

PLAN NOTE: THERE ARE GUARDPOSTS AND DELINEATORS TO BE REMOVED AND REPLACED IN THIS SECTION. THE ENGINEER SHALL CONDUCT A PRELIMINARY SURVEY TO DETERMINE QUANTITY OF EACH ITEM PRIOR TO CONSTRUCTION.



REVISIONS	
NAME	DATE

ILLINOIS DEPARTMENT OF TRANSPORTATION
PLAN VIEW
 F. A. I. ROUTE 72
 74(10, 70)RS-3&(10-71, 73)RS-2
 PIATT & CHAMPAIGN COUNTY
 SCALE: 1" = 100'
 DATE: JULY 2003
 DRAWN BY _____
 CHECKED BY _____