

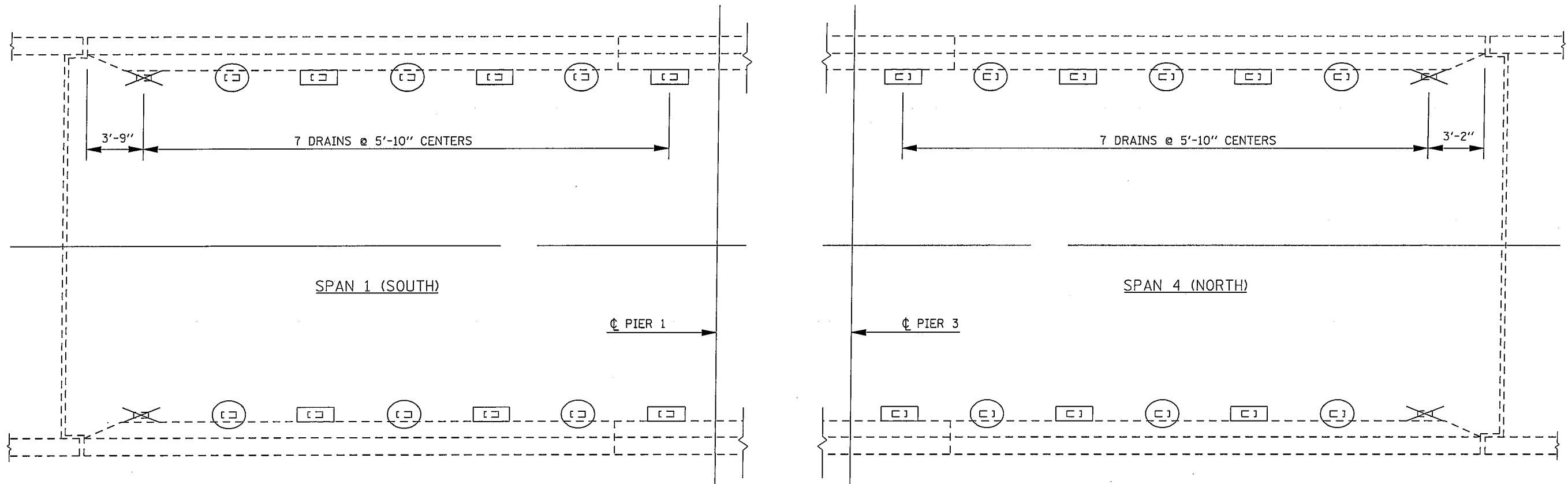
F.A.I. RTE.	SECTION	COUNTY	TOTAL SHEETS	SHEET NO.
72		**	104	68

• 74(10-70)RS-3 & (10-71,73)RS-2
 ** PIATT & CHAMPAIGN

SHEET 1 OF 1

DRAIN REPAIR PLAN

S.N. 010-0166



LEGEND

- PREVIOUSLY PLUGGED FLOOR DRAIN
- PLUG EXISTING DECK DRAIN
- EXISTING DRAIN TO REMAIN IN PLACE

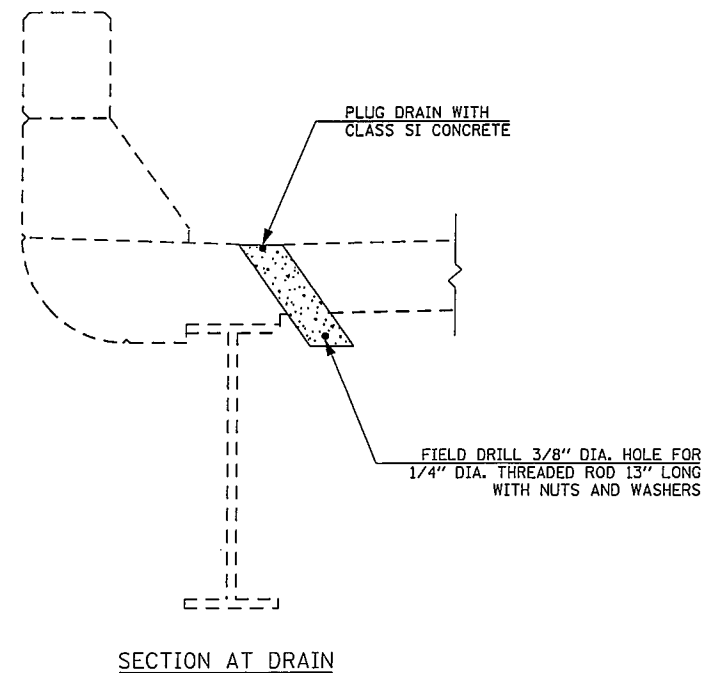
NOTES

THE EXISTING DRAIN EXTENSIONS SHALL BE REMOVED PRIOR TO PLUGGING (AT DRAIN PLUGGING LOCATIONS ONLY). COST TO BE INCLUDED WITH PLUG EXISTING DECK DRAINS.

REMOVED EXTENSIONS WILL BE SALVAGED BY DISTRICT 5 BRIDGE MAINTENANCE CREW. PLEASE CALL JEFF CARR AT 1-217-253-4414 OR JASON LEE AT 1-217-836-8241 TO ARRANGE PICKUP WHEN READY.

BILL OF MATERIALS

ITEM	UNIT	TOTAL
PLUG EXISTING DECK DRAINS	EACH	12



PLOT DATE: 4/19/2009
 FILE NAME: \\P:\0001\SHERRER\70025\010-0166\010-0166.dgn
 PLOT SCALE: 1/4" = 1'-0"
 USER NAME: sherrern

ILLINOIS DEPARTMENT OF TRANSPORTATION
DRAIN REPAIR PLAN
 S.N. 010-0166

F.A.I. ROUTE 72
 SECTION 74(10-70)RS-3&(10-71,73)RS-2
 SCALE: NONE PIATT/CHAMP. CO. DRAWN BY: GMS
 DATE: 04-03-09 CHECKED BY: