

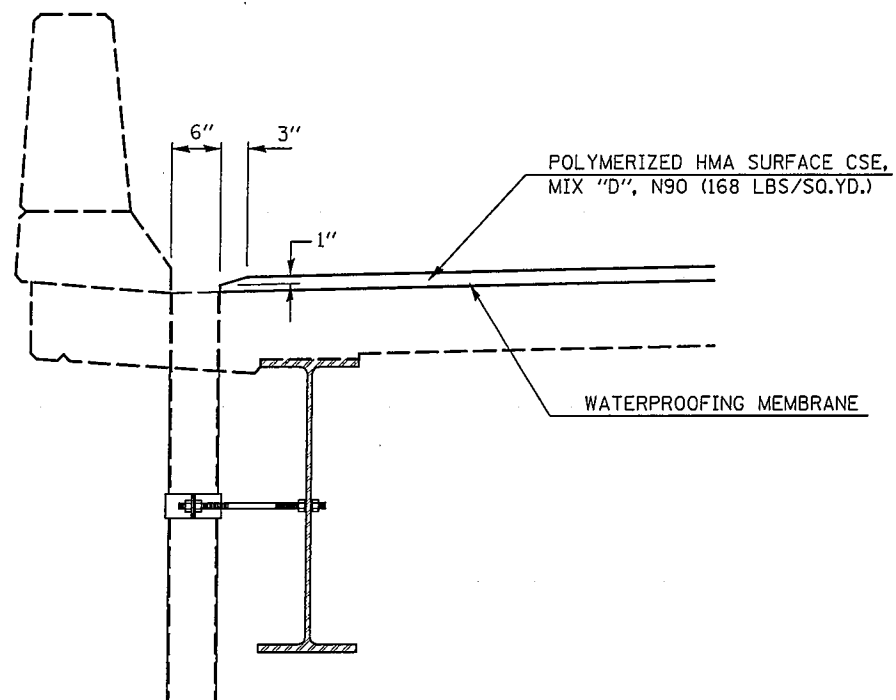
F.A.P. RITE:	SECTION	COUNTY	TOTAL SHEETS	SHEET NO.
I2		..	104	75
STA. _____		TO STA. _____		
FED. ROAD DIST. NO. ILLINOIS FED. AID PROJECT				

• 74(10-70)RS-3 & (10-71,73)RS-2  
 • PIATT & CHAMPAIGN

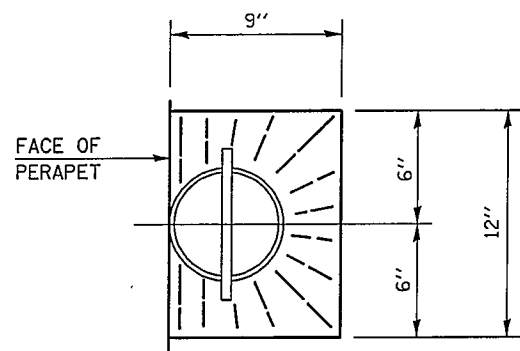
SHEET 3 OF 3

## RESURFACING DETAILS

### S.N. 010-0034 & S.N. 010-0035

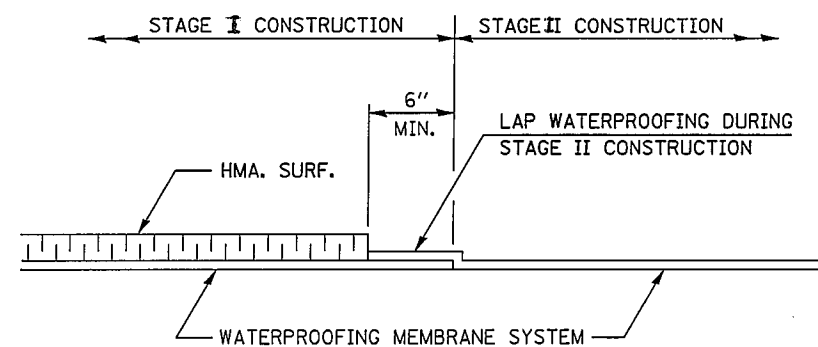


SECTION AT DRAIN



TOP PLAN

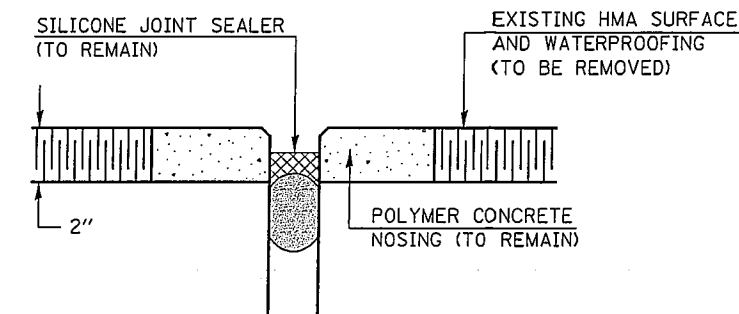
\* SLOPE TO DRAIN



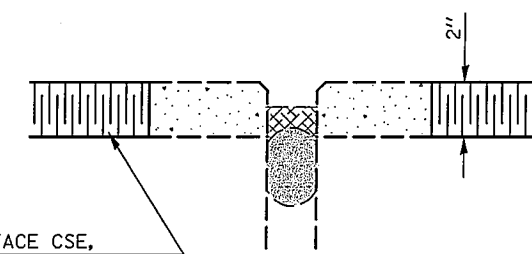
WATERPROOFING LAP DETAIL

**NOTE:**

POLYMERIZED HMA AROUND DRAIN AT PARAPET SHALL BE COMPACTED TO THE SATISFACTION OF THE ENGINEER.



EXISTING SECTION AT JOINTS



POLYMERIZED HMA SURFACE CSE,  
 MIX "D", N90 (168 LBS/SQ.YD.)  
 & WATERPROOFING MEMBRANE

PROPOSED SECTION AT JOINTS

REVISIONS	
NAME	DATE

ILLINOIS DEPARTMENT OF TRANSPORTATION

**RESURFACING DETAILS**

S.N. 010-0034 & S.N. 010-0035

SCALE: VERT.  
 HORIZ.  
 DATE

DRAWN BY  
 CHECKED BY