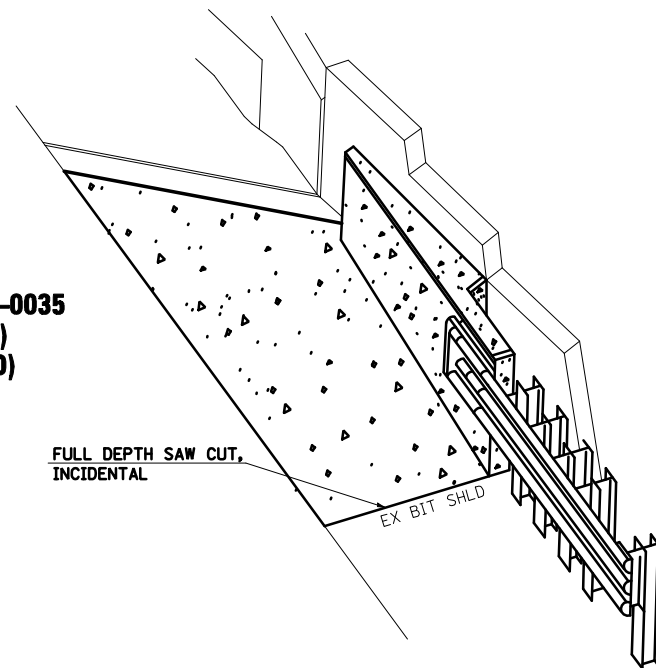


F.A.I. RTE.	SECTION	COUNTY	TOTAL SHEETS	SHEET NO.
72	*	**	104	79

\*74(10-70)RS-3 & (10-71,73)RS-2  
\*\* CHAMPAIGN & PIATT

**LOCATION**

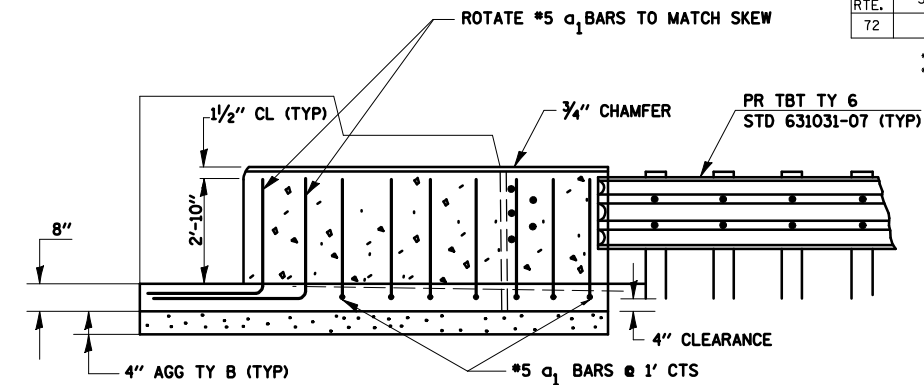
SN 010-0034 & SN 010-0035  
SN 010-0036 (EAST END)  
SN 010-0037 (WEST END)



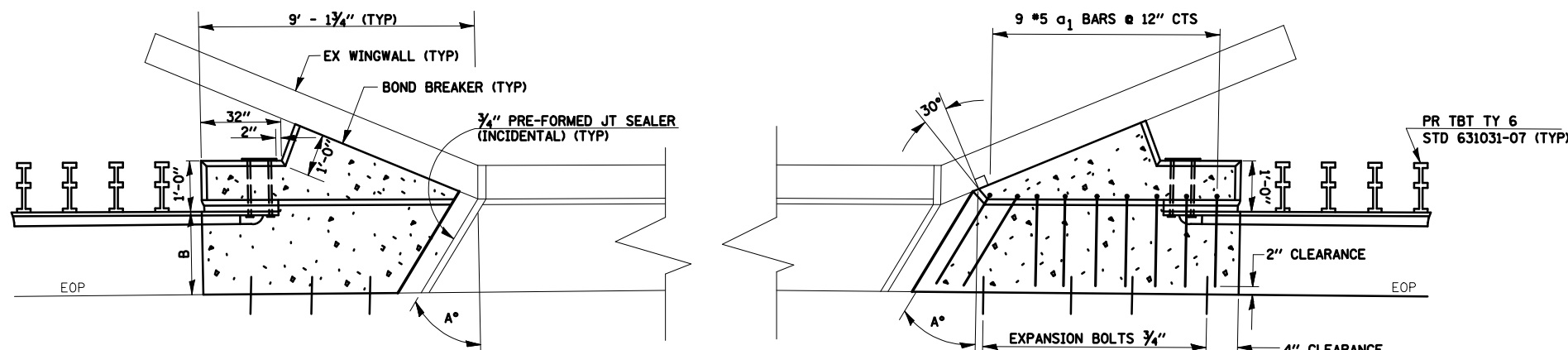
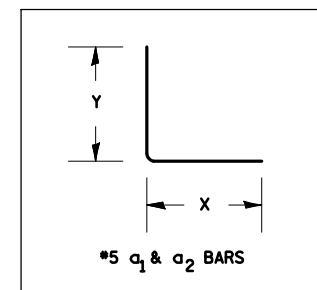
FULL DEPTH SAW CUT, INCIDENTAL

EX BIT SHLD

**PRESPECTIVE**



**ELEVATION SHOWING REINFORCEMENT**



**PLAN VIEW**

**GENERAL NOTES**

1. NO WORK IS NEEDED TO THE WEST END OF SN 010-0036 AND THE EAST END OF SN 010-0037
2. THE ENGINEER SHALL VERIFY EXISTING FIELD DIMENSIONS PRIOR TO CONSTRUCTION.

TABLE OF DIMENSIONS

LOCATION	(A)	(B)	REINFORCEMENT BARS			
	SKEW	BASE	BAR	SIZE	DIMENSION	DIMENSION
	ANGLE	WIDTH			X	Y
SN 010-0034	1°-22'-45"	4'-3"	α1	#5	4'-3"	2'-10"
SN 010-0035	1°-22'-45"	4'-3"	α1	#5	4'-3"	2'-10"
SN 010-0036 E. END	0°	4'-3"	α1	#5	4'-3"	2'-10"
SN 010-0037 W. END	0°	4'-3"	α1	#5	4'-3"	2'-10"

TOTAL BILL OF MATERIALS (E. END) (W. END)

ITEM	UNIT	E. END		W. END		TOTAL
		010-0034	010-0035	010-0036	010-0037	
BITUMINOUS SHOULDER REMOVAL	SQ YD	18	18	18	18	72
REINFORCEMENT BARS, EPOXY COATED	PDS	270	270	270	270	1080
AGGREGATE BASE COURSE TYPE B	TON	5.2	5.2	5.2	5.2	20.8
EXPANSIONS BOLTS 3/4"	EACH	16	16	16	16	64
CONCRETE SUPERSTRUCTURE	CU YD	13.3	13.3	13.3	13.3	53.2

ILLINOIS DEPARTMENT OF TRANSPORTATION  
DETAIL FOR TYPE 6 TERMINAL  
ATTACHMENT TO PARAPET WALL  
F.A.I. ROUTE 72  
SECTION 74(10-70)RS-3 & (10-71,73)RS-2  
CHAMPAIGN & PIATT COUNTY

SCALE: NONE DRAWN BY: MLB  
DATE: 04/01/2009 CHECKED BY: