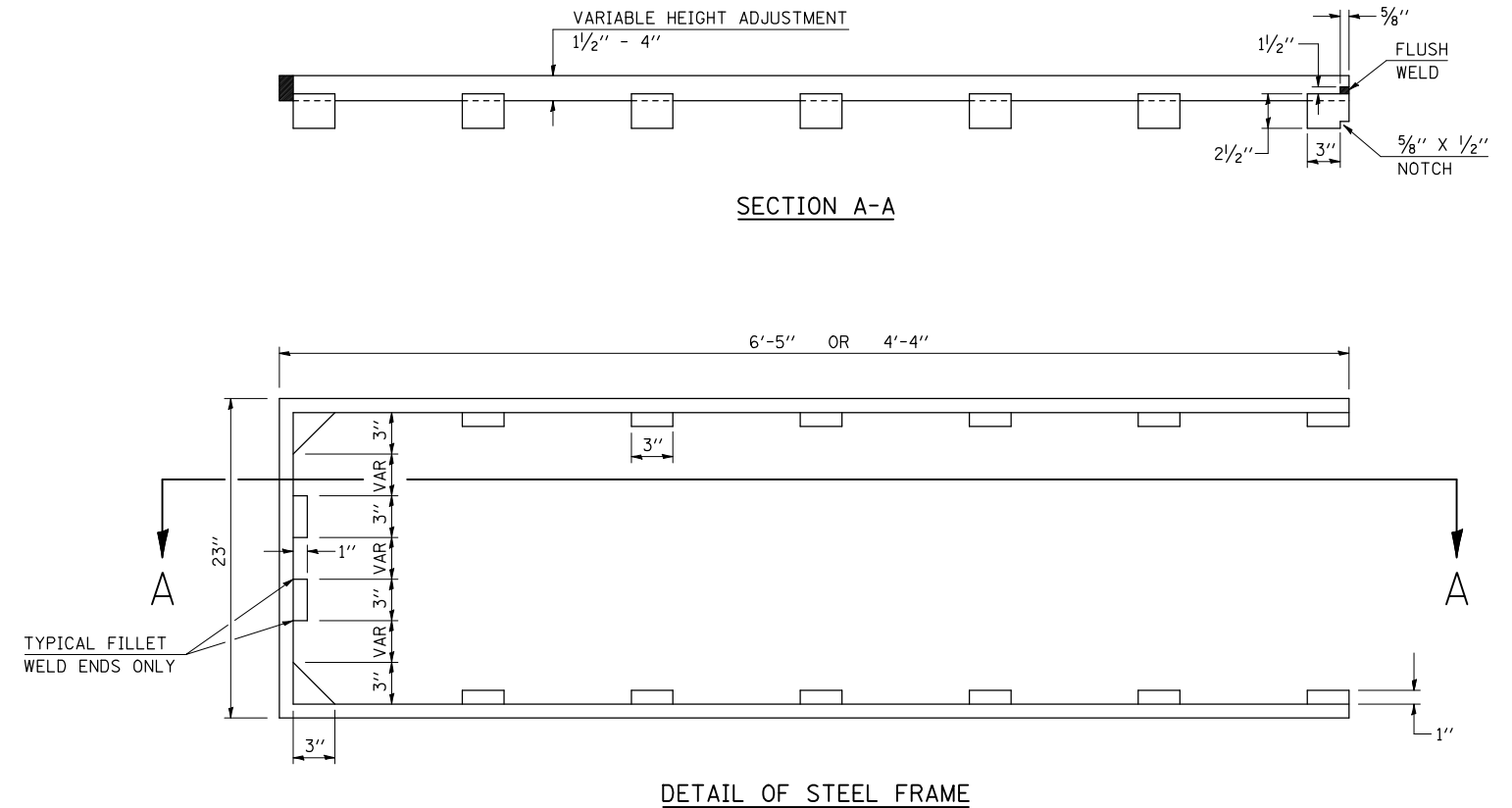
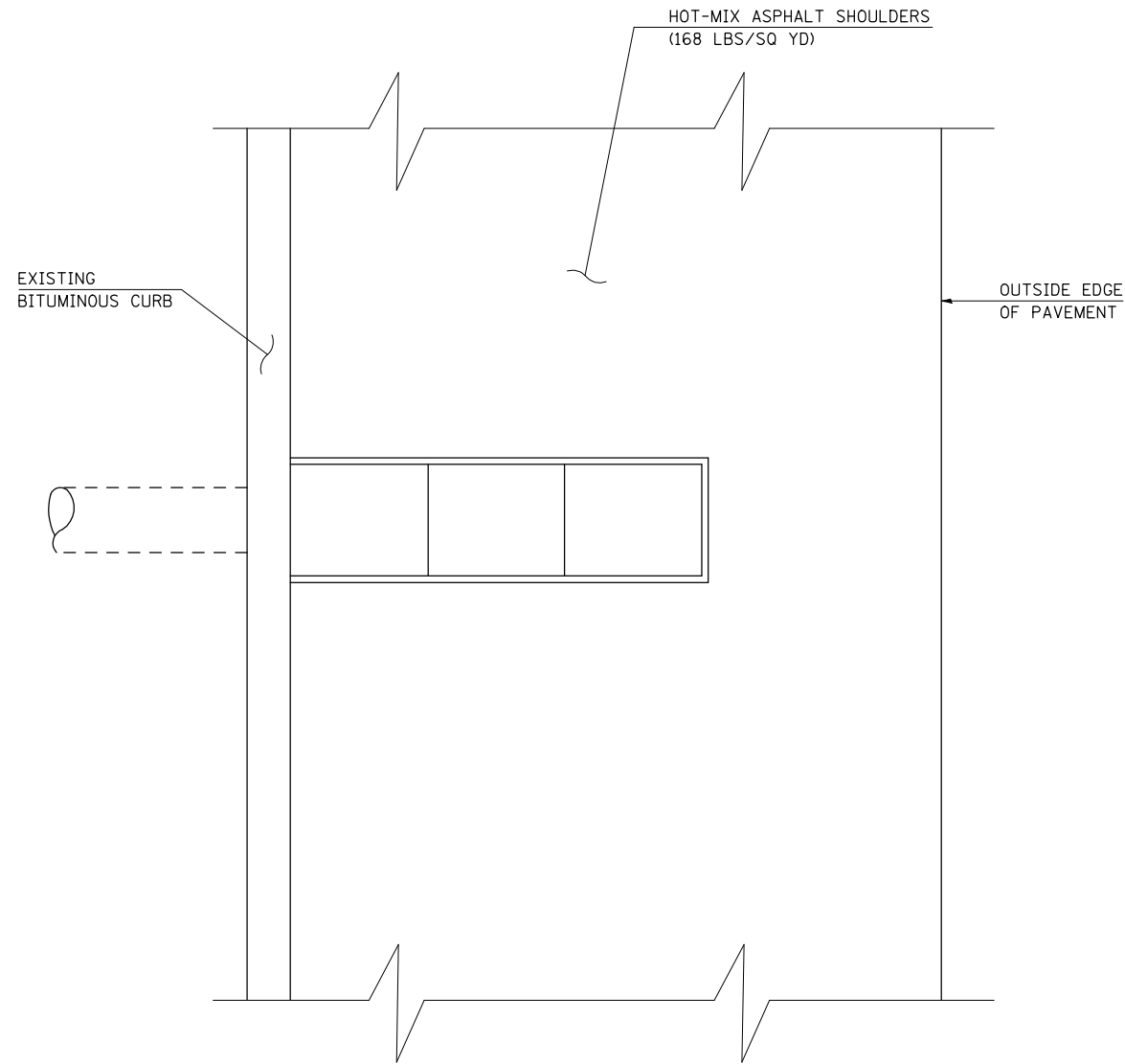


F.A.I. RTE.	SECTION	COUNTY	TOTAL SHEETS	SHEET NO.
72	.	**	104	88

• 74(10-70)RS-3 & (10-71,73)RS-2
 ** PIATT & CHAMPAIGN

DETAIL FOR INLET ADJUST (SPECIAL)

(SEE SCHEDULE OF QUANTITIES FOR LOCATIONS)



60260200 INLET ADJUST (SPECIAL)

LOCATION	EACH
EB I-72	5.0
WB I-72	4.0
TOTAL =	9.0

GENERAL NOTES

- HEIGHT ADJUSTMENTS ARE TO BE MEASURED IN THE FIELD.
- FABRICATION WELDS ARE TO BE PLACED SO AS NOT TO INTERFERE WITH RING SEATING ON FRAME OR GRATE.
- MILD STEEL MAY BE USED TO FABRICATE ADJUSTMENT RING.
- THIS WORK SHALL BE PERFORMED BEFORE THE HMA SHOULDERS ARE PLACED TO INSURE PROPER ADJUSTMENT.
- THIS WORK SHALL BE MEASURED FOR PAYMENT PER EACH INDIVIDUAL ADJUSTMENT AND PAID FOR AT THE CONTRACT UNIT PRICE EACH FOR INLET ADJUST (SPECIAL), WHICH PRICE SHALL INCLUDE ALL EQUIPMENT, MATERIAL, LABOR AND OTHER ITEMS REQUIRED TO MANUFACTURE & INSTALL EACH INDIVIDUAL ADJUSTMENT RING.

NOT TO SCALE

ILLINOIS DEPARTMENT OF TRANSPORTATION
 DETAIL FOR
INLET ADJUST (SPECIAL)

F.A.I. ROUTE 72
 SECTION 74(10-70)RS-3&(10-71,73)RS-2
 SCALE: NONE PIATT/CHAMP. CO. DRAWN BY: CADD
 DATE: 03-31-09 CHECKED BY:

PLOT DATE 4/13/2009
 FILE NAME c:\p\work\A\PIATT\SHERER\JM\0112945\70025\Detail\InletAdjust.dgn
 PLOT SCALE 42,352x / IN.
 USER NAME sherer_jm