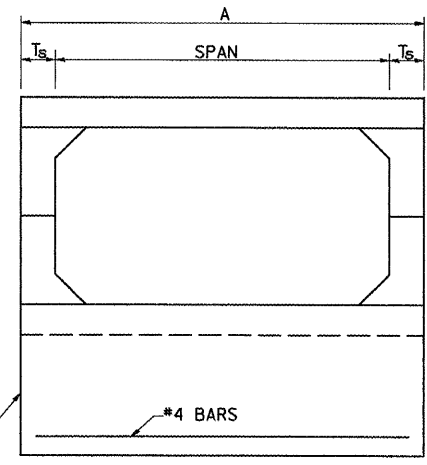
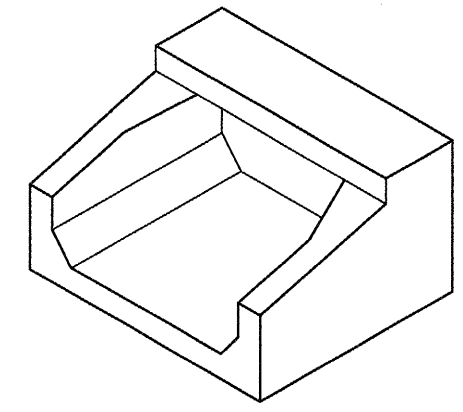


ELEVATION

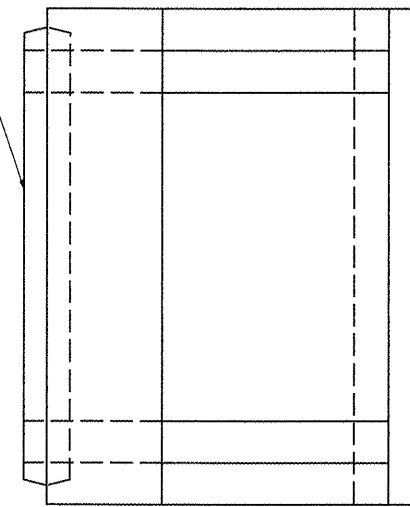


END VIEW

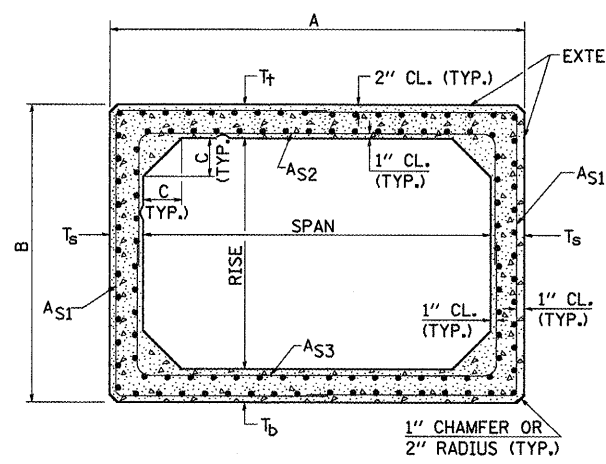


ISOMETRIC

END CONNECTION TO FIT PRECAST BOX CULVERT (BELL OR SPIGOT MAY BE OMITTED WHEN COLLARING TO AN EXISTING BOX OR HEADWALL.)



PLAN



CROSS SECTION

DIMENSIONS

SPAN X RISE	T _t (INCHES)	T _b (INCHES)	T _s (INCHES)	A (FT.-IN.)	B (FT.-IN.)	C (INCHES)	E (FT.-IN.)	F (FT.-IN.)	G (FT.-IN.)	H (FT.-IN.)	SLOPE (X:Y)
3' X 2'	7	6	4	3-8	3-1	4	3-0	3-0	1-0	1-0	3:1

GENERAL NOTES

SHOP DRAWINGS SHALL BE SUBMITTED IN ACCORDANCE WITH THE REQUIREMENTS OF ARTICLE 1042.03(b) OF THE STANDARD SPECIFICATIONS.

MINIMUM CONCRETE STRENGTH SHALL BE 5000 PSI AFTER 28 DAYS.

THE JOINTS OF THE PRECAST BOX SECTIONS SHALL BE SEALED WITH MASTIC IN ACCORDANCE WITH SECTION 1055 OF THE STANDARD SPECIFICATIONS FOR ROAD AND BRIDGE CONSTRUCTION.

THE TERMS AS1, AS2, & AS3 DENOTE THE REQUIRED STEEL AREAS FOR REINFORCEMENT AS SPECIFIED IN AASHTO M273. REINFORCEMENT SHALL BE WELDED WIRE FABRIC CONFORMING TO AASHTO M55-81.

Note: All dimensions are in INCHES (millimeters) unless otherwise shown.

FILE NAME =	USER NAME = craige	DESIGNED -	REVISED -
cr:\pwork\pwork\craige\d0112235\0570511-ahd-details.dgn		DRAWN - JDC	REVISED -
PLOT SCALE = 48.0000' / IN.		CHECKED -	REVISED -
PLOT DATE = 1/29/2009		DATE - 12/29/08	REVISED -

**STATE OF ILLINOIS
DEPARTMENT OF TRANSPORTATION**

BOX CULVERT END SECTION (M273)				
SCALE:	SHEET NO.	OF	SHEETS	STA. TO STA.

F.A.S. RTE.	SECTION	COUNTY	TOTAL SHEETS	SHEET NO.
1476	(55.56)RS-3	McLean	24	24
CONTRACT NO. 70511				
ILLINOIS FED. AID PROJECT				