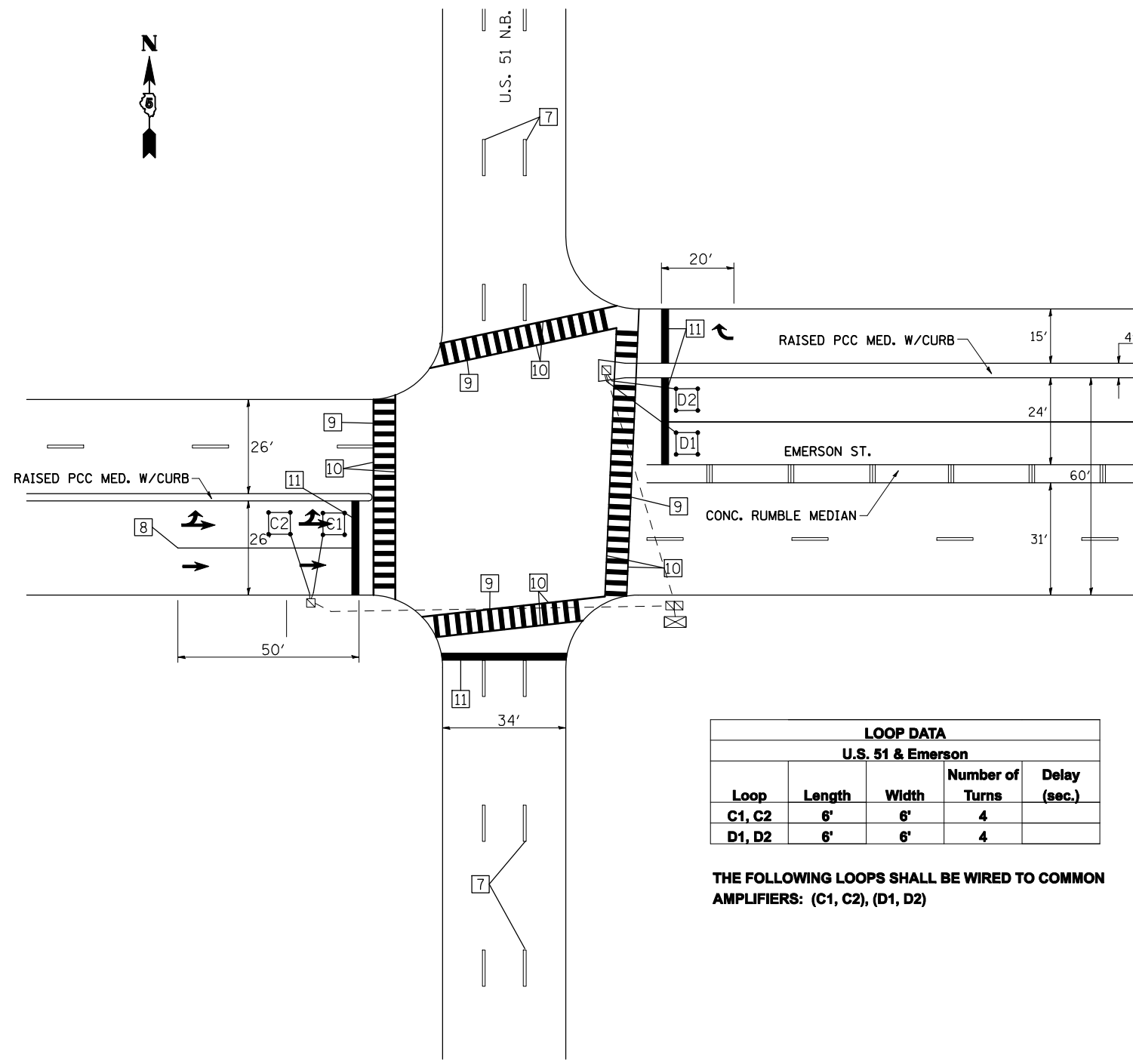


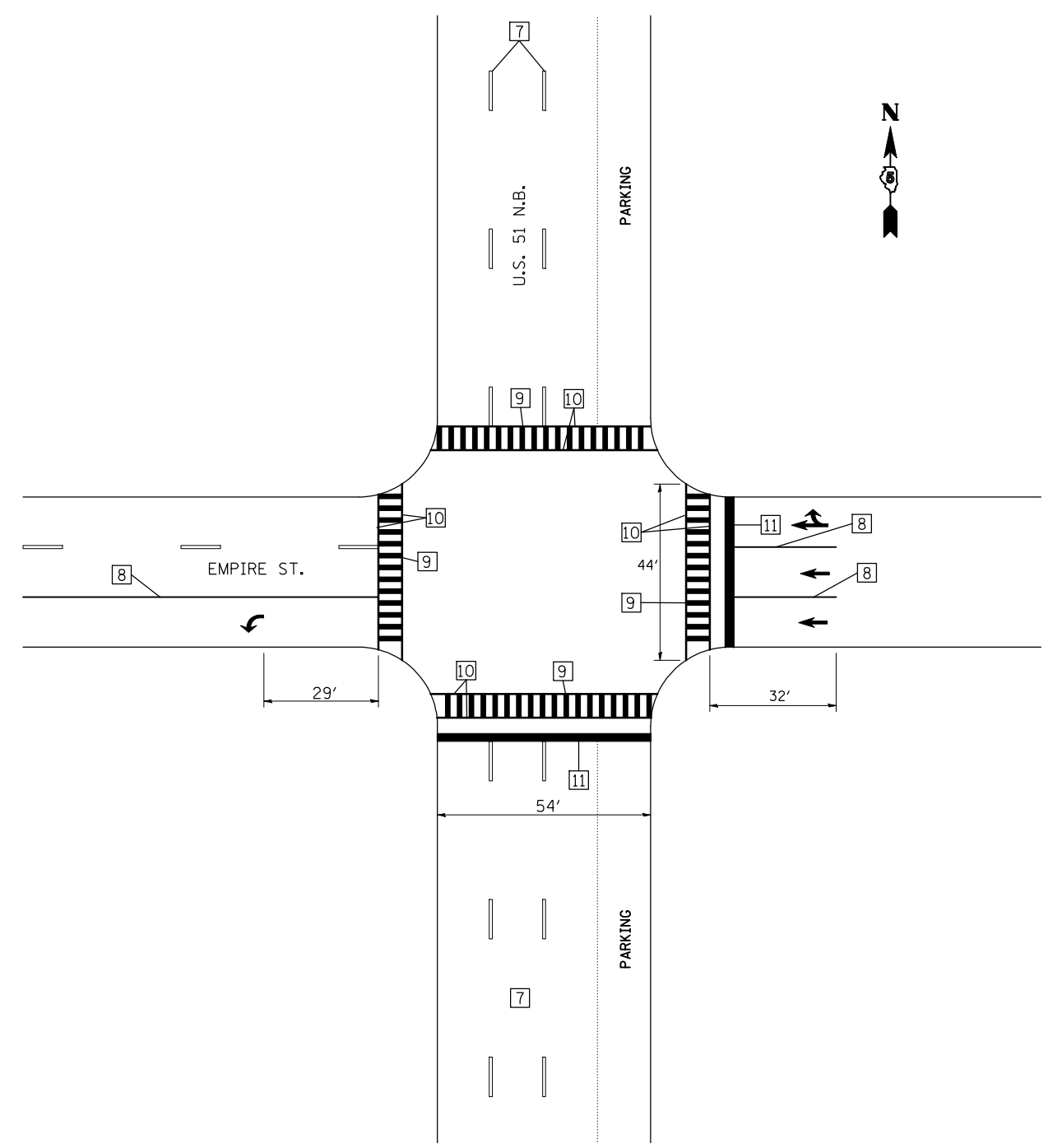
SEE SHEET NO. 48 FOR TYPICAL PAVEMENT MARKING LEGEND.



F.A.P. 730 & EMERSON ST.

| LOOP DATA         |        |       |                 |              |
|-------------------|--------|-------|-----------------|--------------|
| U.S. 51 & Emerson |        |       |                 |              |
| Loop              | Length | Width | Number of Turns | Delay (sec.) |
| C1, C2            | 6'     | 6'    | 4               |              |
| D1, D2            | 6'     | 6'    | 4               |              |

THE FOLLOWING LOOPS SHALL BE WIRED TO COMMON AMPLIFIERS: (C1, C2), (D1, D2)



F.A.P. 730 & EMPIRE ST.