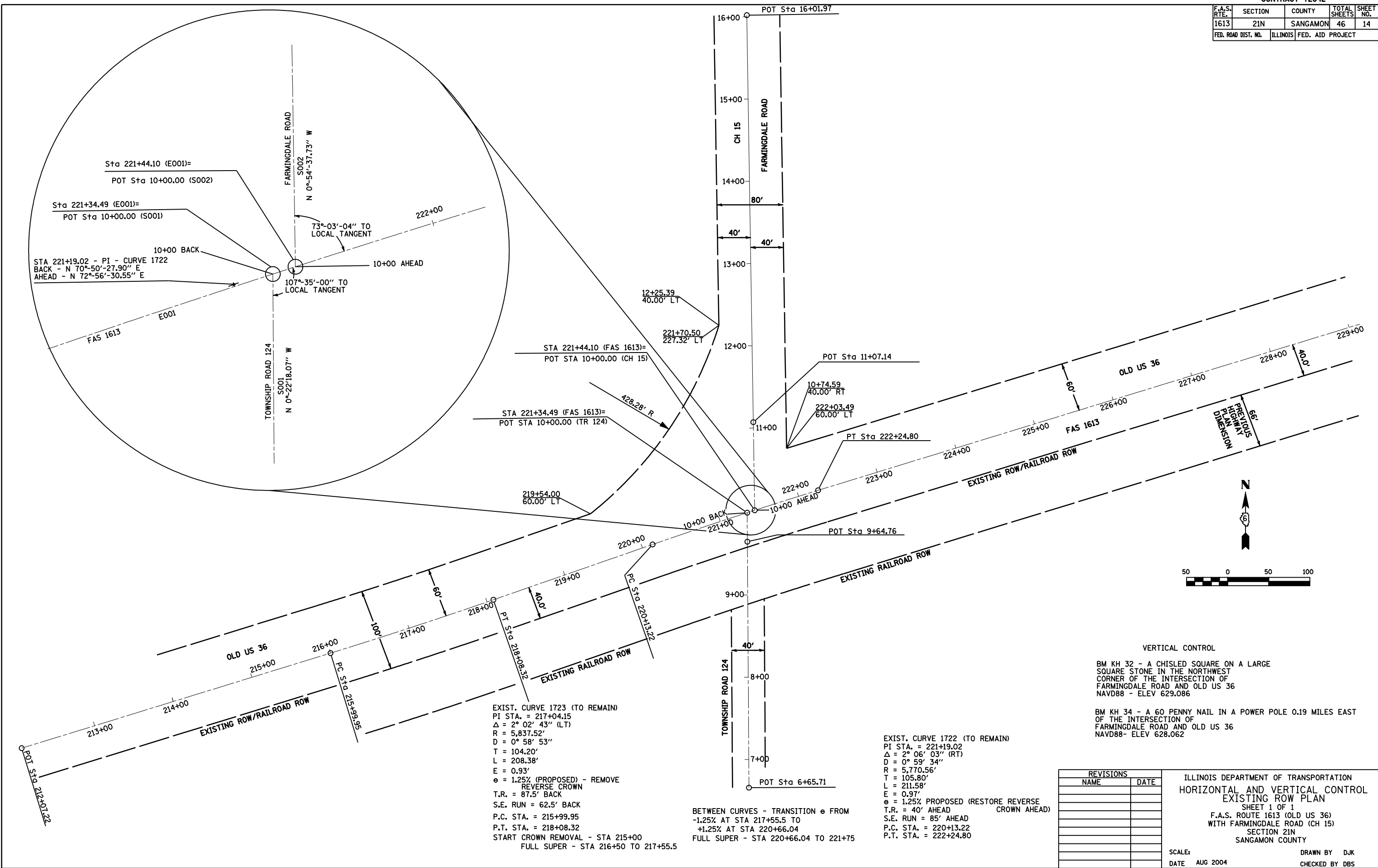


F.A.S. RTE.	SECTION	COUNTY	TOTAL SHEETS	SHEET NO.
1613	21N	SANGAMON	46	14
FED. ROAD DIST. NO.		ILLINOIS	FED. AID PROJECT	



EXIST. CURVE 1723 (TO REMAIN)  
 PI STA. = 217+04.15  
 $\Delta = 2^\circ 02' 43''$  (LT)  
 $R = 5,837.52'$   
 $D = 0^\circ 58' 53''$   
 $T = 104.20'$   
 $L = 208.38'$   
 $E = 0.93'$   
 $e = 1.25\%$  (PROPOSED) - REMOVE REVERSE CROWN  
 $T.R. = 87.5'$  BACK  
 $S.E. RUN = 62.5'$  BACK  
 $P.C. STA. = 215+99.95$   
 $P.T. STA. = 218+08.32$   
 START CROWN REMOVAL - STA 215+00  
 FULL SUPER - STA 216+50 TO 217+55.5

BETWEEN CURVES - TRANSITION  $e$  FROM  
 $-1.25\%$  AT STA 217+55.5 TO  
 $+1.25\%$  AT STA 220+66.04  
 FULL SUPER - STA 220+66.04 TO 221+75

EXIST. CURVE 1722 (TO REMAIN)  
 PI STA. = 221+19.02  
 $\Delta = 2^\circ 06' 03''$  (RT)  
 $D = 0^\circ 59' 34''$   
 $R = 5,770.56'$   
 $T = 105.80'$   
 $L = 211.58'$   
 $E = 0.97'$   
 $e = 1.25\%$  PROPOSED (RESTORE REVERSE CROWN AHEAD)  
 $T.R. = 40'$  AHEAD  
 $S.E. RUN = 85'$  AHEAD  
 $P.C. STA. = 220+13.22$   
 $P.T. STA. = 222+24.80$

VERTICAL CONTROL  
 BM KH 32 - A CHISLED SQUARE ON A LARGE SQUARE STONE IN THE NORTHWEST CORNER OF THE INTERSECTION OF FARMINGDALE ROAD AND OLD US 36  
 NAVD88 - ELEV 629.086  
 BM KH 34 - A 60 PENNY NAIL IN A POWER POLE 0.19 MILES EAST OF THE INTERSECTION OF FARMINGDALE ROAD AND OLD US 36  
 NAVD88 - ELEV 628.062

REVISIONS	
NAME	DATE

ILLINOIS DEPARTMENT OF TRANSPORTATION  
 HORIZONTAL AND VERTICAL CONTROL  
 EXISTING ROW PLAN  
 SHEET 1 OF 1  
 F.A.S. ROUTE 1613 (OLD US 36)  
 WITH FARMINGDALE ROAD (CH 15)  
 SECTION 21N  
 SANGAMON COUNTY  
 SCALE: DATE AUG 2004  
 DRAWN BY DJK  
 CHECKED BY DBS