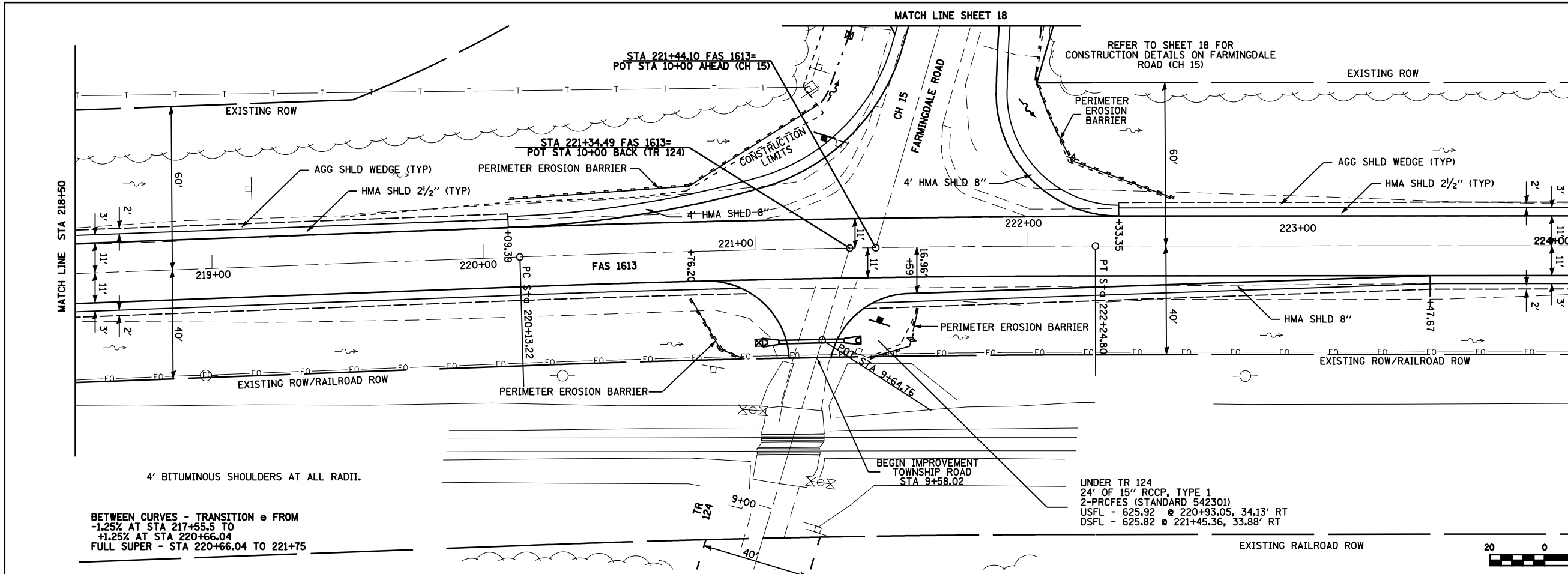


F.A.S. RTE.	SECTION	COUNTY	TOTAL SHEETS	SHEET NO.
1613	21N	SANGAMON	46	16
STA. 218+50		TO STA. 224+00		
FED. ROAD DIST. NO.		ILLINOIS FED. AID PROJECT		

PLAN	SURVEYED	DATE
	BY	
	NO. OF WAY CHECKED	
	NO. OF WAY CHECKED	
	NO. OF WAY CHECKED	
	NO. OF WAY CHECKED	

PROFILE	SURVEYED	DATE
	BY	
	NO. OF WAY CHECKED	
	NO. OF WAY CHECKED	
	NO. OF WAY CHECKED	
	NO. OF WAY CHECKED	



EXIST. CURVE 1722 (TO REMAIN)
 P.I. STA. = 221+19.02
 $\Delta = 2^\circ 06' 03''$ (RT)
 $D = 0^\circ 59' 34''$ (RT)
 $T = 5770.56'$
 $L = 105.80'$
 $E = 211.58'$
 $e = 0.97'$
 $e = 1.25\%$ PROPOSED (RESTORE REVERSE CROWN AHEAD)
 T.R. = 40' AHEAD
 S.E. RUN = 85' AHEAD
 P.C. STA. = 220+13.22
 P.T. STA. = 222+24.80

4' BITUMINOUS SHOULDERS AT ALL RADII.
 BETWEEN CURVES - TRANSITION e FROM
 -1.25% AT STA 217+55.5 TO
 +1.25% AT STA 220+66.04
 FULL SUPER - STA 220+66.04 TO 221+75

