

STATE OF ILLINOIS
DEPARTMENT OF TRANSPORTATION
DIVISION OF HIGHWAYS

PROPOSED
HIGHWAY PLANS

FAP ROUTE 749 (IL 133)
SECTION 119RS-2

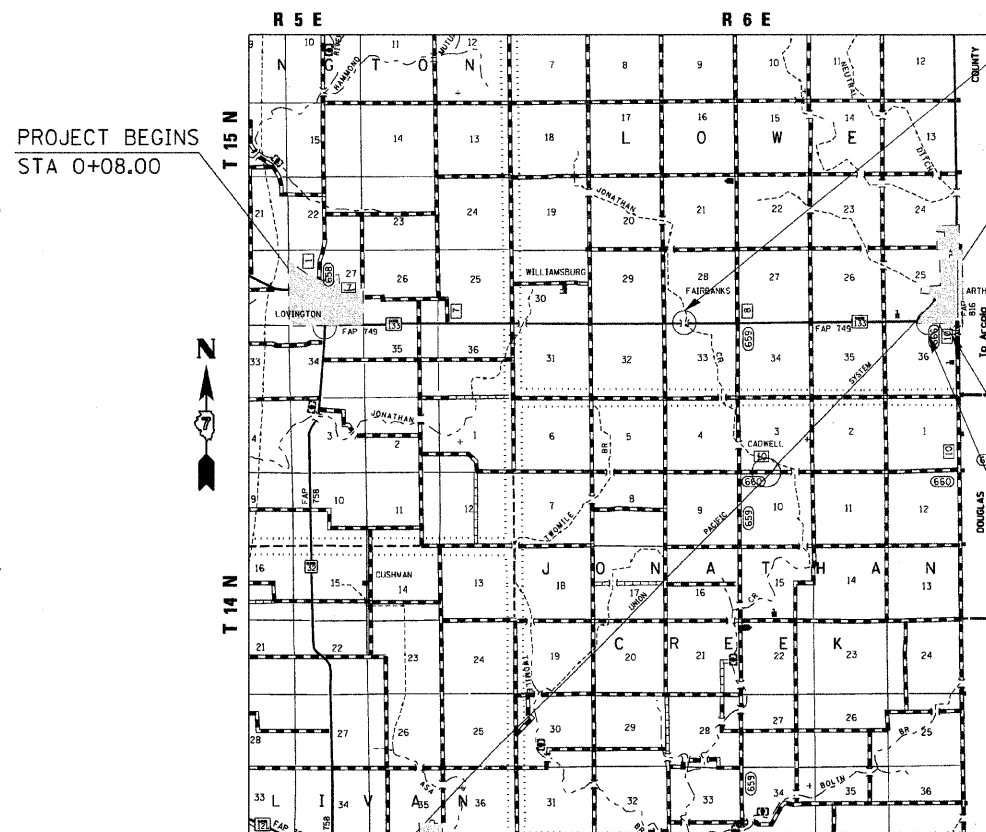
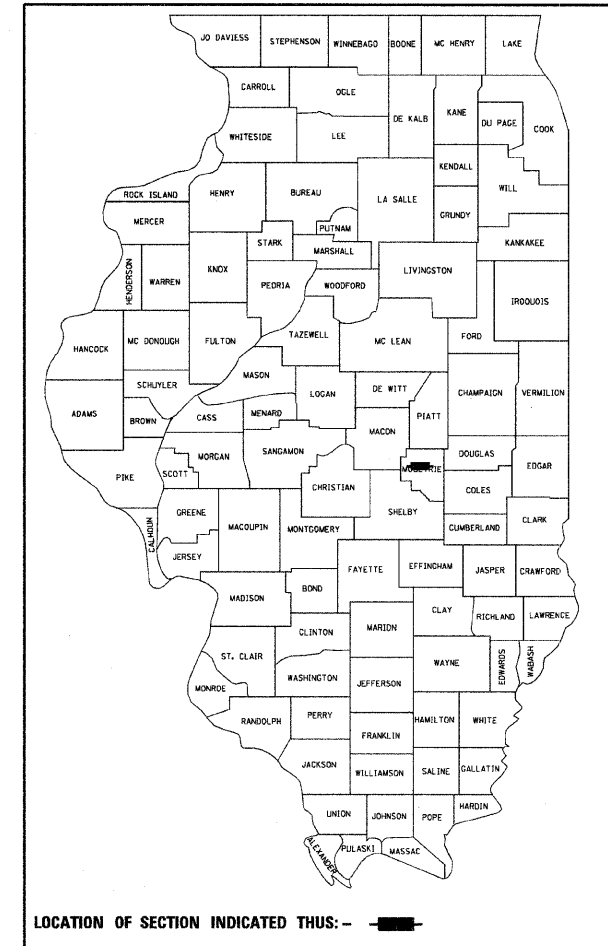
3P RESURFACING
MOULTRIE COUNTY

C-97-066-09

F.A.P. R.T.E.	SECTION	COUNTY	TOTAL SHEETS	SHEET NO.
749	119RS-2	MOULTRIE	26	1
ILLINOIS			CONTRACT NO. 74381	

FOR INDEX OF SHEETS, SEE SHEET NO. 2

D-97-037-09

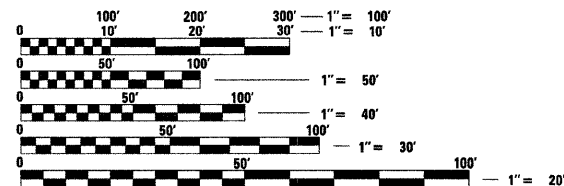


PAVING OMISSION
SN 070-0035
STA 258+28
STA 259+22

PAVING OMISSION
SN 070-0016
STA 452+90.92 TO
STA 0+13.15

PROJECT ENDS
STA 2+90

STA EQUATION
STA 453+12 (BK) =
STA 0+08 (AH)



FULL SIZE PLANS HAVE BEEN PREPARED USING STANDARD ENGINEERING SCALES. REDUCED SIZED PLANS WILL NOT CONFORM TO STANDARD SCALES. IN MAKING MEASUREMENTS ON REDUCED PLANS, THE ABOVE SCALES MAY BE USED.

J.U.L.I.E.
JOINT UTILITY LOCATION INFORMATION FOR EXCAVATION
1-800-892-0123
OR 811

PROJECT ENGINEER: TOM RONAN
PROJECT MANAGER: JEFF DAVISON

CONTRACT NO. 74381

GROSS LENGTH = 45,602.0 FT. = 8.60 MILE
NET LENGTH = 45,465.7 FT. = 8.60 MILE

STATE OF ILLINOIS
DEPARTMENT OF TRANSPORTATION
DIVISION OF HIGHWAYS

SUBMITTED April 10 20 09

Roger A. Swidell
DEPUTY DIRECTOR OF HIGHWAYS, REGION ENGINEER

May 1, 20 09
Charles G. Ingersoll
ENGINEER OF DESIGN AND ENVIRONMENT

May 1, 20 09
Christine M. Reed
DIRECTOR OF HIGHWAYS, CHIEF ENGINEER

PRINTED BY THE AUTHORITY
OF THE STATE OF ILLINOIS