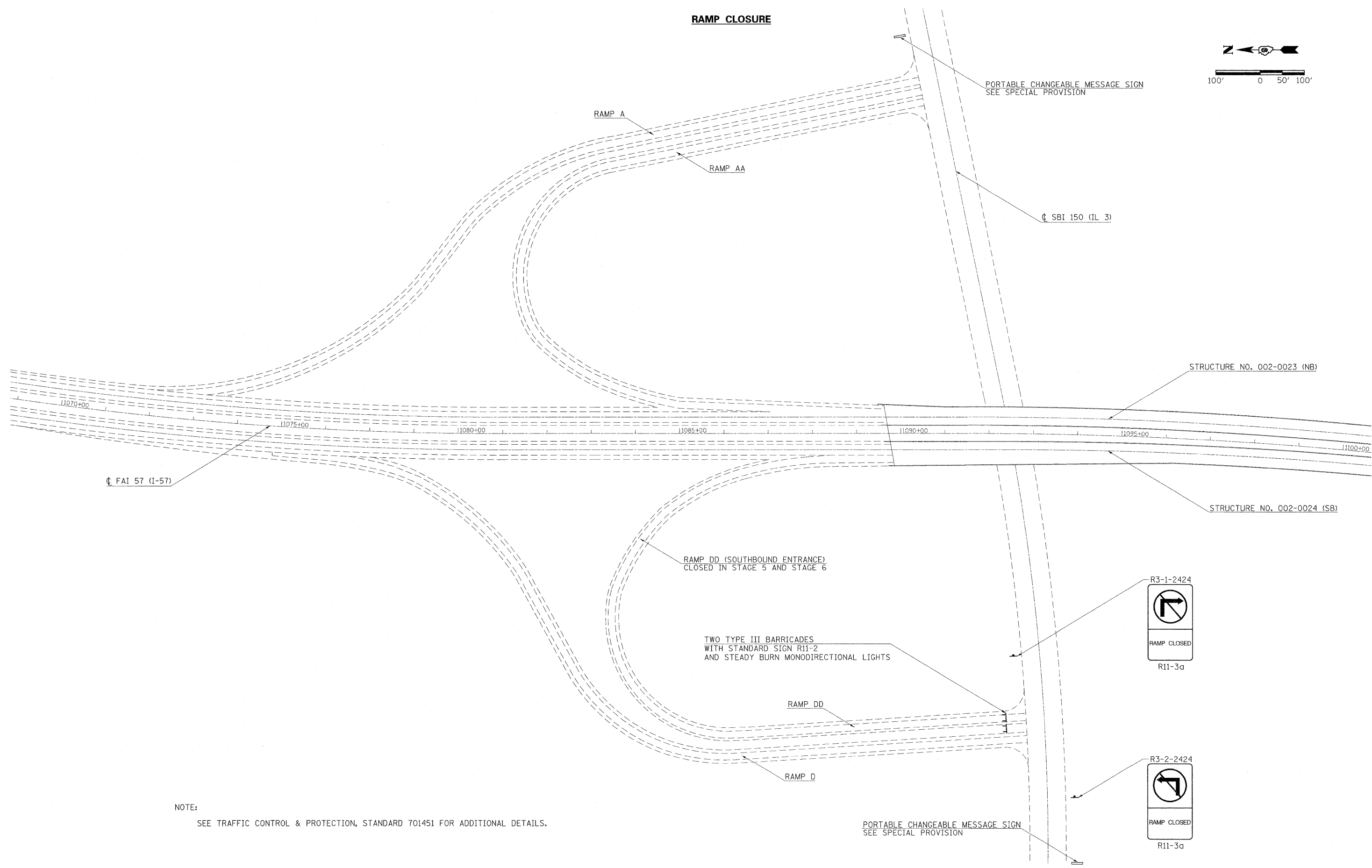
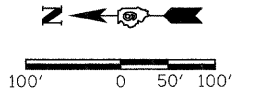


**RAMP CLOSURE**



FAI 57 (I-57)

PORTABLE CHANGEABLE MESSAGE SIGN  
SEE SPECIAL PROVISION

SBI 150 (IL 3)

STRUCTURE NO. 002-0023 (NB)

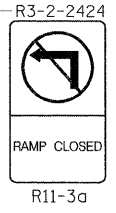
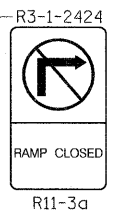
STRUCTURE NO. 002-0024 (SB)

RAMP DD (SOUTHBOUND ENTRANCE)  
CLOSED IN STAGE 5 AND STAGE 6

TWO TYPE III BARRICADES  
WITH STANDARD SIGN R11-2  
AND STEADY BURN MONODIRECTIONAL LIGHTS

RAMP DD

RAMP D



NOTE:  
SEE TRAFFIC CONTROL & PROTECTION, STANDARD 701451 FOR ADDITIONAL DETAILS.

PORTABLE CHANGEABLE MESSAGE SIGN  
SEE SPECIAL PROVISION

FILE NAME = c:\pw_work\PWIDOT\HALSTEADT\0113592\02-0023-sht-stage.dgn	USER NAME = halsteadtw	DESIGNED -	REVISED -	<b>STATE OF ILLINOIS DEPARTMENT OF TRANSPORTATION</b>	<b>RAMP CLOSURE STRUCTURE NO 002-0024 (WB)</b>			F.A.I. RTE. 57	SECTION D9 SMART FY09-2	COUNTY ALEXANDER	TOTAL SHEETS 45	SHEET NO. 12	
	PLOT SCALE = 100.0000' / IN.	CHECKED -	REVISED -		SCALE: 1"=100'	SHEET NO. OF SHEETS	STA. TO STA.	CONTRACT NO. 78111					
	PLOT DATE = 4/2/2009	DATE -	REVISED -		ILLINOIS FED. AID PROJECT								