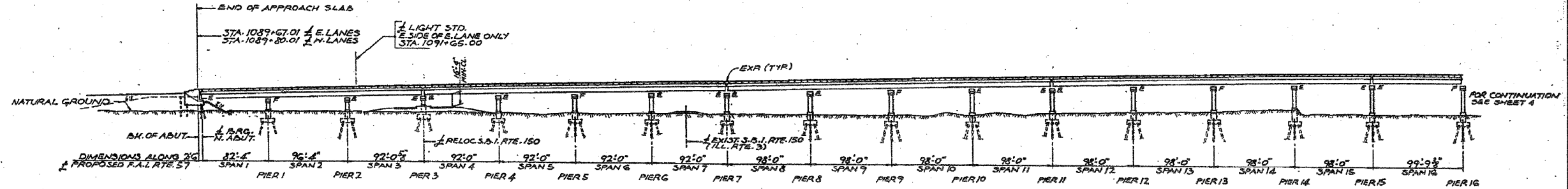


B.M. CONC. MONUMENT WITH BRASS CAP ON TOP OF LEVEE 357 LT. STA. 1087+00 ELEV. 336.91

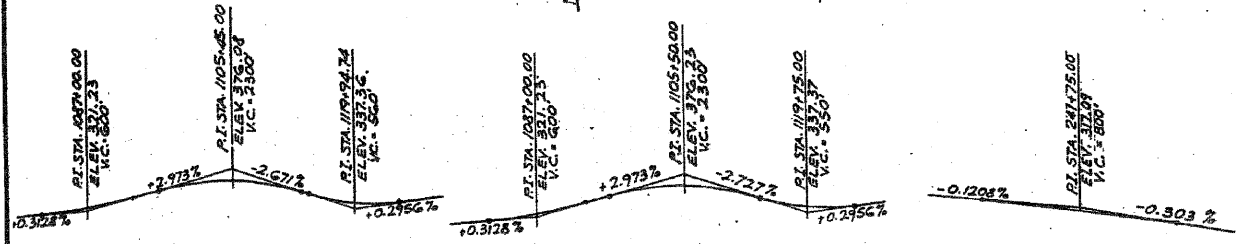
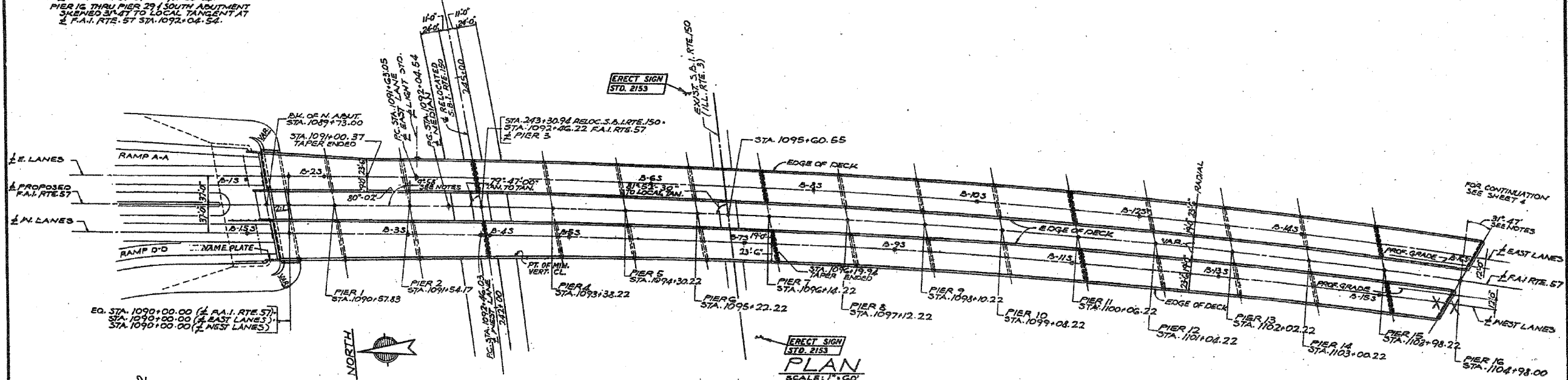
SECTION	COUNTY	TOTAL SHEETS	SHEET NO.
FAI 57 02-IVB	ALEXANDER	156	3
STA.	TO STA.		
D. P. & REL. NO. 4	ALPHABET	PROJECT	



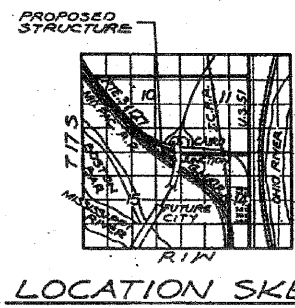
NOTES FOR SKEW ANGLES OF ABUTMENTS AND PIERS

NORTH ABUT. (PIER 1 THRU PIER 15 INCL. SKEMED 91.54 TO LOCAL TANGENT AT F.A.I. RTE. 57 STA. 1092+04.54.
 PIER 16 THRU PIER 21 (SOUTH ABUTMENT SKEMED 31.67 TO LOCAL TANGENT AT F.A.I. RTE. 57 STA. 1092+04.54.

ELEVATION
SCALE: 1"=10'



DESIGN DATA
 HIGHWAY CLASSIFICATION
 F.A.I. ROUTE 57
 DESIGN LOAD
 FUTURE D.L. = 25 P.S.F.
 DESIGN STRESSES
 CONCRETE (CAST-IN-PLACE)
 f_c = 3,500 P.S.I.
 f_t = 1,200 P.S.I. (DECK SLAB)
 f_t = 1,400 P.S.I. (SUBSTRUCTURE, CURB & PARAPET)
 f_t = 1,000 P.S.I. (WITH EARTH PRESSURE)
 v = 75 P.S.I. (FOOTINGS)
 n = 10
 REINFORCING STEEL
 f_s = 20,000 P.S.I.
 STRUCTURAL STEEL
 f_s = 20,000 P.S.I. (A36)
 PILE CAPACITY
 ABUTMENTS = 45 TON CONCRETE PILES
 PIERS = 35 TON CONCRETE PILES
 MAX. L.L. DEFLECTION
 1/1200 (COMPOSITE)



STATION 1092+46.22
 BUILT 197 BY
 STATE OF ILLINOIS
 F.A.I. RTE 57 SECT. 02-IVB
 F.A. PROJ. IG-57-1(91)
 LOADING HS 20-44 & ALT.
 2 REQ'D. SEE STATE OF ILLINOIS STANDARD 2113
 LETTERING FOR NAME PLATE

GENERAL PLAN AND ELEVATION
 F.A.I. RTE. 57 OVER S.B.I. RTE. 150,
 EXIST. RTE. 3, G.M. & G.R., LEVEE & M.P.R.R.
 PROJECT IG-57-1 (91) 1
 F.A.I. RTE. 57 SECTION 02-IVB
 ALEXANDER COUNTY
 STA. 1089+73.00 TO STA. 1119+69.00

ALFRED BENECH & COMPANY
 CONSULTING ENGINEERS
 10 S. WABASH AVE. CHICAGO, ILLINOIS

FILE NAME =	USER NAME = halsteadtw	DESIGNED -	REVISED -	STATE OF ILLINOIS DEPARTMENT OF TRANSPORTATION	ORIGINAL PLANS INFORMATION ONLY				F.A.I. RTE.	SECTION	COUNTY	TOTAL SHEETS	SHEET NO.
cd:\pwwork\pwwid\HALSTEADTW\d0113592\02-0023-sht-stage.dgn		DRAWN -	REVISED -		SCALE: 1"=100'	SHEET NO.	OF	SHEETS	STA.	TO STA.	ALEXANDER	45	40
		CHECKED -	REVISED -									CONTRACT NO. 78111	
		DATE -	REVISED -									ILLINOIS FED. AID PROJECT	